

R & M SUBDIVISION

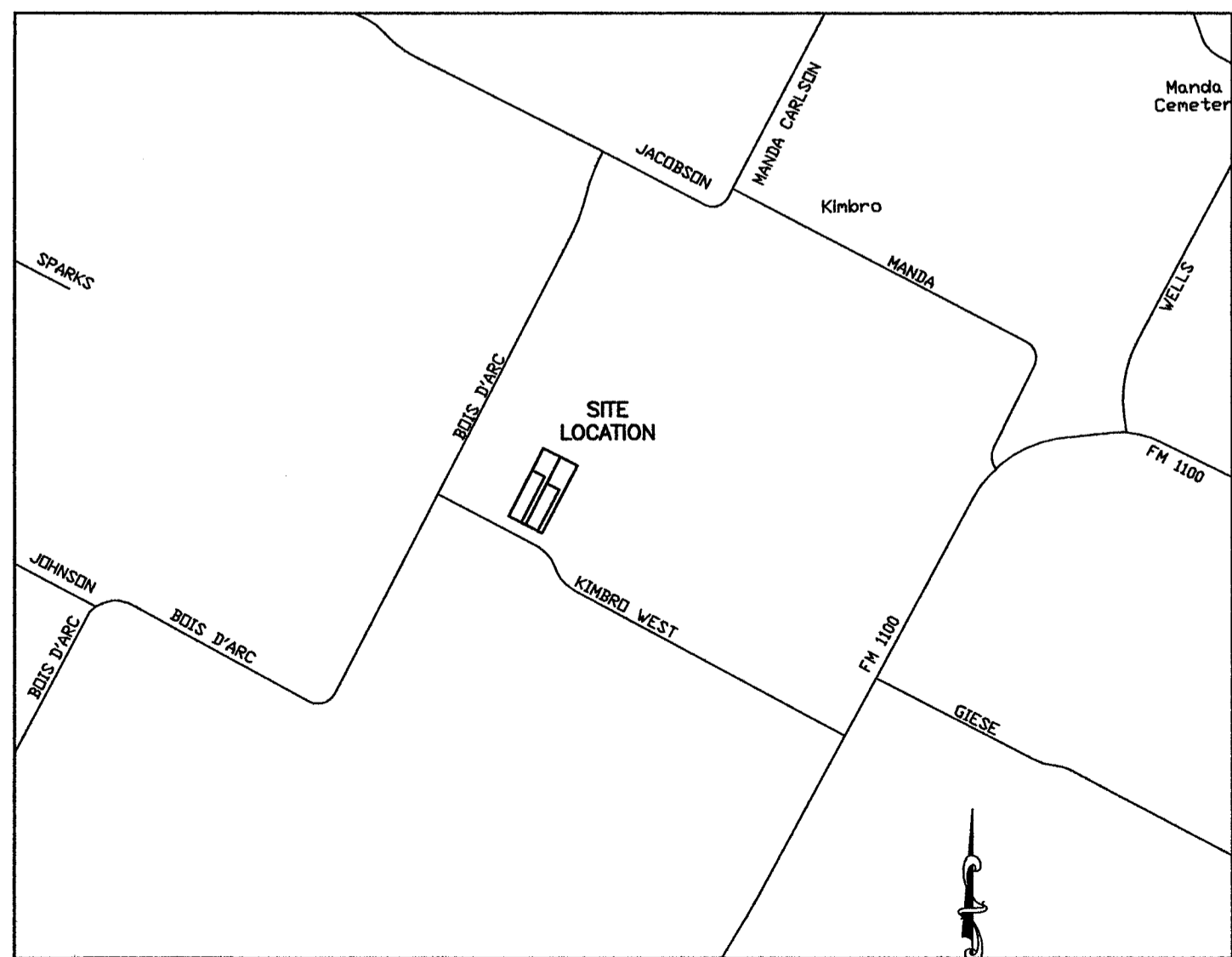
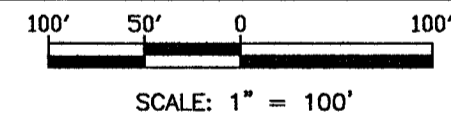
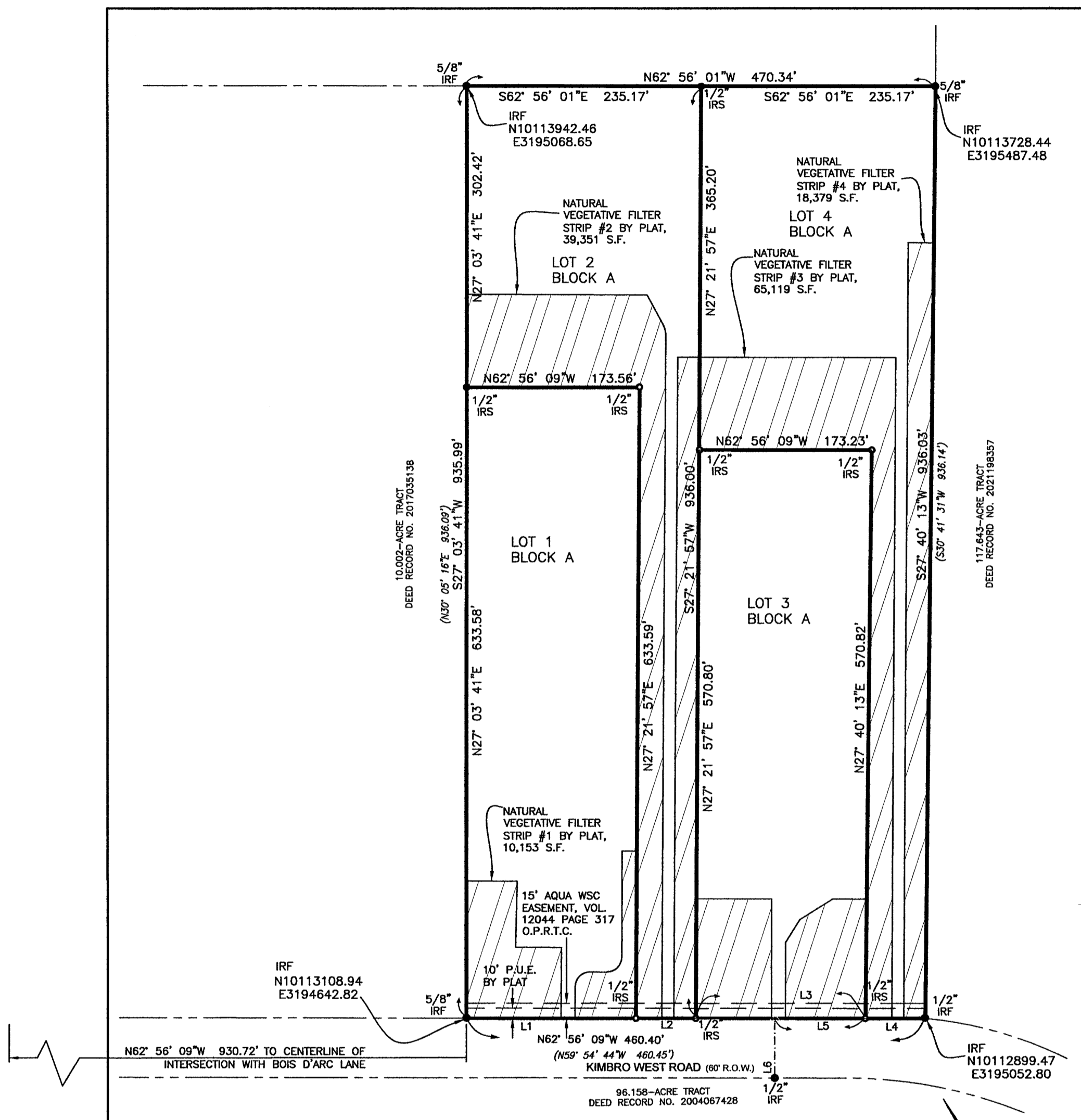
LEGEND

- BOUNDARY LINE
- PROPERTY LINE
- (xxx) PER RECORD
- IRON ROD FOUND
- IRON ROD SET
- IRF IRON ROD FOUND
- IRS IRON ROD SET
- P.U.E. PUBLIC UTILITY EASEMENT
- EASEMENT LINE
- O.P.R.T.C. OFFICIAL PUBLIC RECORDS TRAVIS COUNTY
- ⊙ CONCRETE MONUMENT SET (CMS)
- - - - - ROW TIE
- ▨ NATURAL VEGETATIVE FILTER STRIP

NOTE:  
THE COORDINATES SHOWN ARE BASED ON THE TEXAS STATE PLANE COORDINATE SYSTEM, CENTRAL ZONE, NAD83 (CORS) DATUM. THE BEARINGS SHOWN ARE GRID BEARINGS.

LINE DATA		
LINE #	BEARING	DISTANCE
L1	N62°56'09"W	170.20'
L2	N62°56'09"W	60.00'
L3	N62°56'09"W	170.20'
L4	N62°56'09"W	60.00'
L5	N62°56'09"W	151.13'
L6	S27°03'51"W	60.00'

—	LOT SIZE	LAND USE	
LOT No.	SQ.FT.	ACRES	
LOT 1	108,909	2.50	S.F. RESIDENTIAL
LOT 2	108,890	2.50	S.F. RESIDENTIAL
LOT 3	98,010	2.25	S.F. RESIDENTIAL
LOT 4	119,776	2.75	S.F. RESIDENTIAL
TOTAL	435,586	10.00	—



LOCATION MAP  
1"=2000

ACCEPTED AND AUTHORIZED FOR RECORD BY THE PLANNING AND ZONING COMMISSION OF THE CITY OF MANOR, TEXAS, ON THIS THE \_\_\_\_\_ DAY OF \_\_\_\_\_, 20\_\_\_\_.

APPROVED:

ATTEST:

JULIE LEONARD  
CHAIRPERSON

LLUVIA T. ALMARAZ, CITY SECRETARY

ACCEPTED AND AUTHORIZED FOR RECORD BY THE CITY COUNCIL OF THE CITY OF MANOR, TEXAS, ON THIS THE \_\_\_\_\_ DAY OF \_\_\_\_\_, 20\_\_\_\_.

APPROVED:

ATTEST:

HONORABLE DR. CHRISTOPHER HARVEY  
MAYOR OF THE CITY OF MANOR, TEXAS

LLUVIA T. ALMARAZ, CITY SECRETARY

