



VICINITY MAP
SCALE: 1" = 2000'

GREENBERRY GATES SURVEY NO. 63 ABSTRACT NO. 315

A.C. CALDWELL SURVEY NO. 52 ABSTRACT NO. 154

GRID N: 10,100,249.40
GRID E: 3,182,662.63

GRID N: 10,101,574.25
GRID E: 3,183,008.95

SURVEY CONTROL POINT
GRID N: 10,102,097.66
GRID E: 3,184,144.16
ELEV. = 540.82'

GRID N: 10,102,069.52
GRID E: 3,184,022.66

LOT 1 (MF-2)

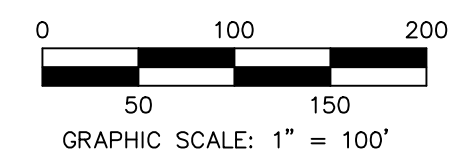
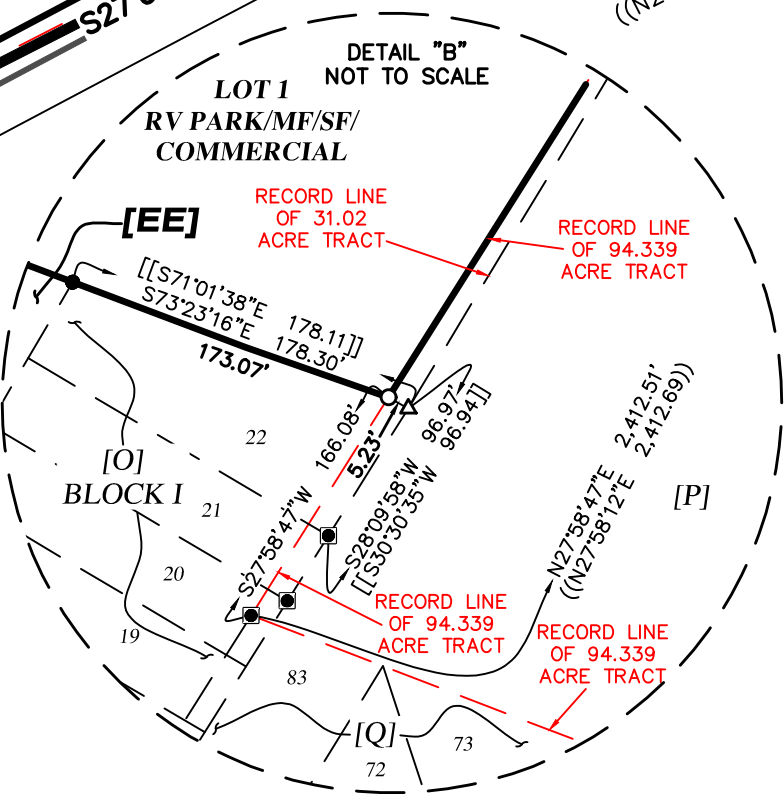
LOT 2 (COMMERCIAL)

LOT 3 (COMMERCIAL)

[P] CALLED 84.2717 ACRES ("TRACT 1")
MANOR 290 OZ REAL ESTATE LP
DOC. # 2021172435, O.P.R.T.C.T.
AND CORRECTED IN
IN DOC. # 2022056842
O.P.R.T.C.T.

LOT SUMMARY:

LOT 1	24.0681 AC.	1,048,407 SQ. FT.
LOT 2	3.3588 AC.	146,308 SQ. FT.
LOT 3	3.4374 AC.	149,735 SQ. FT.
OVERALL	30.8643 AC.	1,344,450 SQ. FT.



RESUBDIVISION OF MANOR ADDITION

City of Manor, Travis County, Texas



PO Box 90876, Austin Texas 78709
WWW.4WARDLS.COM (512) 537-2384
TBPLS FIRM #10174300

Date:	12/19/2023
Project:	00835
Scale:	1" = 100'
Reviewer:	DV
Tech:	TE
Field Crew:	TE/JC
Survey Date:	MAR. 2019
Sheet:	1 OF 3