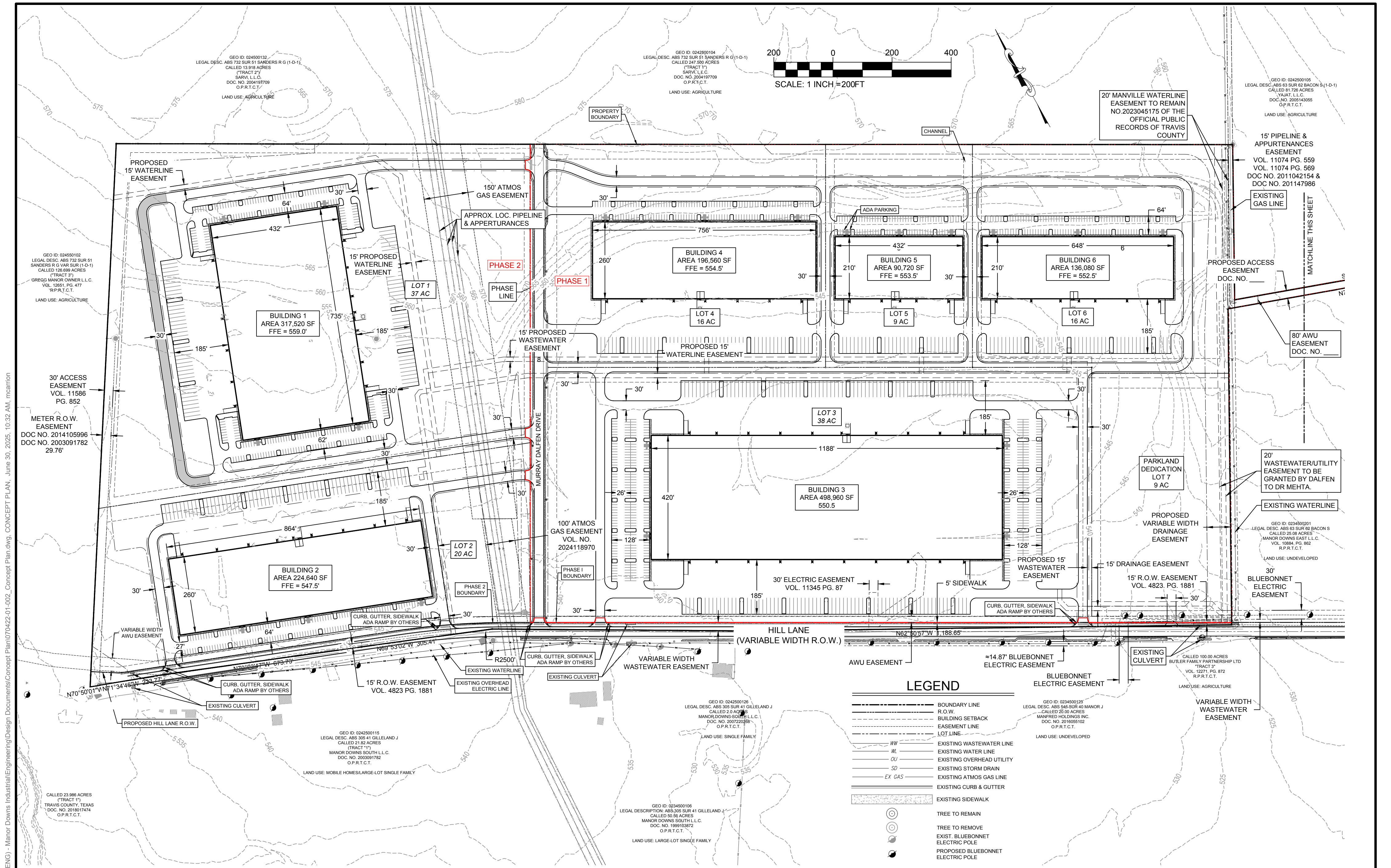


V:\070422 - Dalfen Industrial\070422-01-002 (ENG) - Manor Downs Industrial\Engineering\Design Documents\Concept Plan\070422-01-002\_Concept Plan.dwg, Concept Plan.dwg, June 30, 2025, 10:32 AM, mcarroll



**NOTES:**

- THIS SITE IS TO BE ZONED IN-2 HEAVY INDUSTRIAL.
- 7 NON-RESIDENTIAL LOTS ARE PROPOSED WITH THIS DEVELOPMENT.
- LOT 7 IS TO BE DEDICATED AS PARKLAND TO THE CITY OF MANOR.

MATCHLINE THIS SHEET

CITY OF MANOR LIMITS

S72°08'25"E 938.15'

N72°08'25"W 961.19'

DATE: 5/27/2025	DRAWN BY: LDB	
SCALE: 1" = 200'	CHECKED BY: MGC	
JOB No: 070422-01-002	DESIGNED BY: MK	
REVISIONS		
REVISION	DESCRIPTION	DATE

# Bowman

© 2024 Bowman Consulting Group Ltd  
TBPE Firm Registration No. F-14309

807 Las Cimas Parkway  
Suite 350  
Austin, Texas 78746

Phone: (512) 327-1180  
Fax: (512) 327-4062  
www.bowman.com

## CONCEPT PLAN

### MANOR DOWNS INDUSTRIAL HILL LANE MANOR, TEXAS

SHEET 2 OF 3

STATE OF TEXAS

MARISA KEISER

141397

LICENSED PROFESSIONAL ENGINEER

Marisa Keiser

June 30, 2025

PRELIMINARY NOT FOR CONSTRUCTION