

# WATER TANK INSPECTION REPORT

## CITY OF MANOR, TEXAS

03/10/2023



<b>TANK NAME:</b>	Yard GST	<b>Location:</b>	Manor, TX
<b>CAPACITY:</b>	150,000 Gallons	<b>STYLE:</b>	Ground Storage Tank
<b>CONSTRUCTION STYLE:</b>	Bolted	<b>CONSTRUCTION DATE:</b>	Unknown
<b>BUILDER:</b>	Unknown	<b>HEIGHT/DIMENSION:</b>	32' HWL



COATINGS



SAFETY



SANITARY



STRUCTURAL



SECURITY

## EXTERIOR COATING



**Exterior Coating**

Good condition. Normal wear.



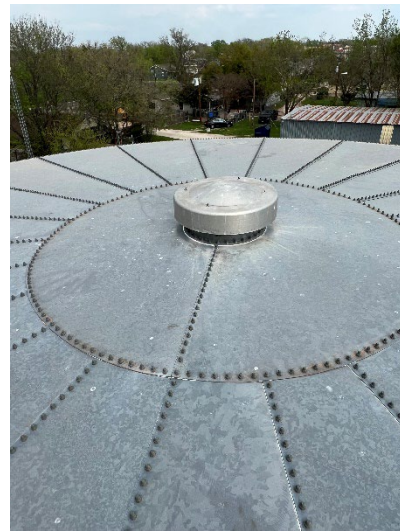
**Exterior Coating**

Good condition. Small exterior rust pit noted by ladder cage.



**Exterior Coating**

Good condition. Staining at ring wall line.



**Exterior Coating**

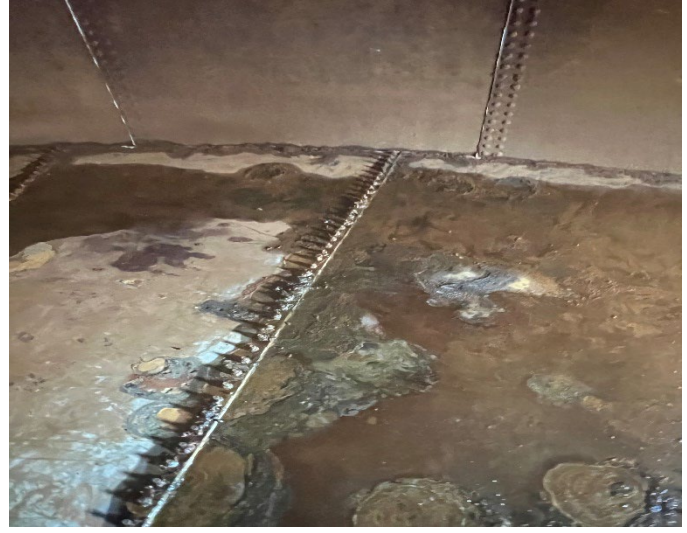
Roof plates look good.

## INTERIOR CONDITIONS



**Interior**

Fair condition with heavy staining after sediment was removed.



**Interior**

Sidewalls are heavily stained. Floor degradation and pitting noted.



**Interior**

Fair condition with heavy staining.



**Interior**

Roof beams are in good condition.

## SAFETY CONDITIONS



**Safety Climb**

No safety cable climb. Ladder cage is in place.



**Tank Access**

Tank access is proper size and configuration.

## SANITARY CONDITIONS



**Vent Screen**

Vent and screen are in place and look good.



**Overflow**

Overflow is in good condition and routed to ground level.  
Flapper is in place.

## STRUCTURAL CONDITIONS



**Foundations**

Foundation and grout are in good condition. Keep vegetation and landscape water away from ring wall.



**Tank Sediment**

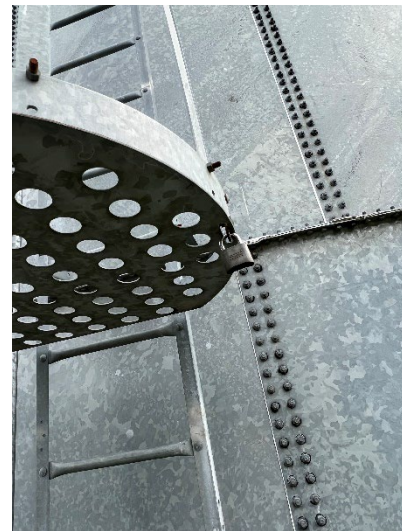
Tank sediment was removed during the service.

## SECURITY CONDITIONS



**Hatch**

Roof man way is in good condition and secured.



**Tower Access**

Tower access was secure upon arrival and secure upon completion.

## SUMMARY

### Exterior:

Good condition with a few previous leak stains on exterior.

### Interior Wet Area:

Fair condition with heavy staining. Sediment removed today.

Chlorine, the base for many commonly used bleaches, is also very **corrosive** to galvanized steel. This means galvanized steel should not be used in chlorine water; however, hot-dip galvanized structural steel has performed acceptably when used indoors above chlorine pools.

[galvanizeit.org/knowledgebase/article/corrosive-chemicals-and-galvanizing](https://galvanizeit.org/knowledgebase/article/corrosive-chemicals-and-galvanizing)

**Corrosive Chemicals and Galvanizing | American Galvanizers ...**

### Safety:

All safety items are in compliance with current standards.

### Sanitary:

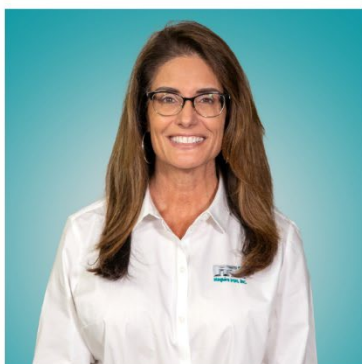
All sanitation items are in compliance with current standards.

### Structural:

Tank appears structurally sound. Keep vegetation and landscape water away from tank foundation.

### Security:

Tank was secure upon arrival and departure.



**ROXANA BAGWELL**

**WATER TOWER EXPERT**

c: (737) 990-7656

w: (605) 334-9749

bagwellr@maguireiron.com