



1500 County Road 269
Leander, TX 78641

Mailing Address:
9601 Amberglen Blvd. #109
Austin, TX 78729

MEMORANDUM

To: City of Manor
From: GBA
Date: 4/2/2025
Subject: Change Order No.1 for the Manor Commercial Park Wastewater Collection System and Carriage Hills Lift Station #5 Improvements Phase 1.

This will cover the necessary items for the change order request for the Manor Commercial Park Wastewater Collection System and Carriage Hills Lift Station #5 Improvements Phase 1.

The stub out for the tie-in point of the wastewater line as called out in the as-builts was not installed per the plans in 2006. This stub out is located approximately 42' further west, requiring additional linear feet of pipe.

The associated work for this installation will require additional linear feet of pipe, a traffic control plan, curb and street repair. An additional 5 calendar days will be added to the final completion date.

Change Order #1 total is **\$24,652.66**

The Original contract price of **\$2,286,295.00**

The contract price including this change order is **\$2,310,947.66**

This change order will be a 1% increase from the original contract amount.

Packsaddle Management, LLC

Road, Utilities, Concrete, Site Prep, Paving

Date:	March 24, 2025
Project:	Manor Commercial
Change Proposal No.	1
Description:	Extend Pipe 41.68 Feet to new tie-in point at Carriage Hills. Pipe price is already established in the bid and will be accounted for in an overrun. The following Change Proposal is for traffic control, asphalt patching, curb, and gutter, flowable fill, misc. equipment and materials.
Per Revision Dated: 1/20/2025	In the event of a ditch failure within the asphalt and curb and gutter section that is unavoidable and has been experience thus far on the job, we would expect to be compensated for the additional quantities and time.

Labor				
Labor	QTY	Rate	Hours	Total
Common Laborer	3	\$ 22.00	40	\$ 2,640.00
Operators	1	\$ 32.00	40	\$ 1,280.00
Foreman	1	\$ 35.00	40	\$ 1,400.00
				\$ 5,320.00
			15.7497% Labor Burden	\$ 837.88
				Total Labor Cost: \$ 6,157.88

Materials				
Description	Quantity	Unit	Price	Total
Flowable Fill	10	EA	\$ 185.00	\$ 1,850.00
Traffic Control Plan & Signage	1	LS	\$ 6,000.00	\$ 6,000.00
Curb & Gutter (Minumum Charge)	20	LF	\$ 22.00	\$ 440.00
				Total Material Cost: \$ 8,290.00

Equipment				Total
Description	QTY	Rate		
Concrete Saw & Blade	1	\$ 650.00		
			Total Equipment Cost: \$ 650.00	


Additional Footage Per Bid Price			
Description	QTY	Rate	Total
Overrun of Pipe	41.68	\$ 147.00	\$ 6,126.96
			Additional Bid Price \$ 6,126.96

Total for Labor, Material, Equipment, Additional Bid Price \$ 21,224.84

1% Bond (Total Labor, Material, Equipment, Additional Bid Price) \$ 212.25

15% Markup Overhead and Profit (Total for Labor, Material, Equipement Additional Bid Price, Bond) \$ 3,215.56

Grand Total Change Proposal \$ 24,652.66


 Roman Molina 3-24-25

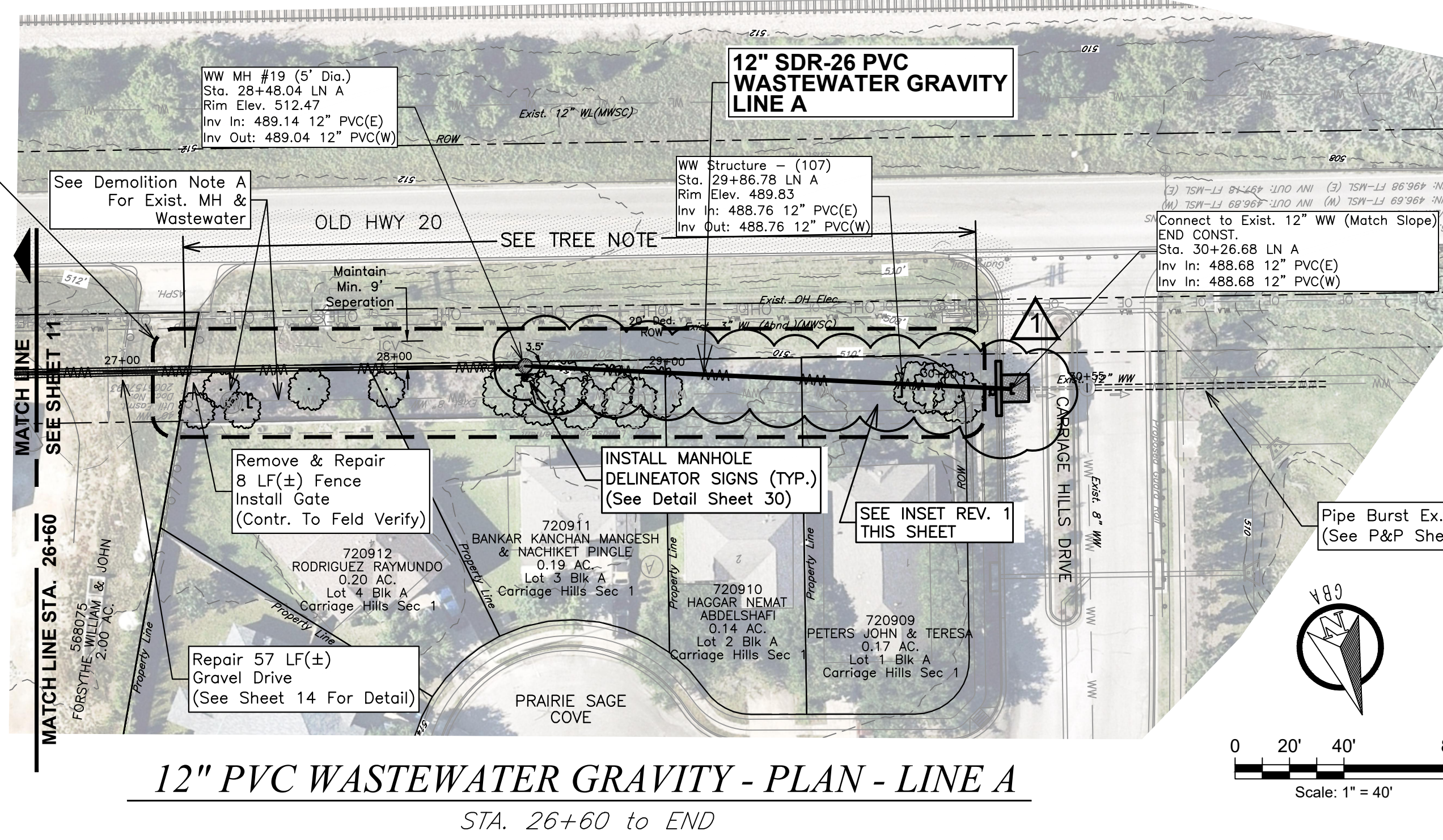
NOTES :

- EXISTING UTILITY LOCATIONS SHOWN HEREON ARE APPROXIMATE. CONTRACTOR IS TO VERIFY LOCATIONS OF ALL EXISTING UTILITY LINES PRIOR TO COMMENCING WORK.
- CONTRACTOR'S ACTIVITIES SHALL BE CONFINED TO RIGHTS-OF-WAY & EASEMENTS.
- WASTEWATER STRUCTURES MAY BE SHOWN AT A LARGER SCALE THAN ACTUAL SIZE FOR CLARITY & GENERAL LOCATIONS.
- WASTEWATER GRAVITY LINES SHALL BE SDR-26 PVC PIPE, UNLESS OTHERWISE SHOWN.
- COORDINATE ANY ROAD CROSSING WITH THE CITY OF MANOR AND PROPERTY OWNERS TO MAINTAIN ACCESS TO WASTEWATER CONSTRUCTION.
- EXISTING ON SITE CONDITIONS MAY NECESSITATE AN ALTERNATE LOCATION FOR WASTEWATER SERVICES SHOWN ON PLANS. CONTRACTOR TO COORDINATE WITH CITY ENGINEER FOR APPROVAL.

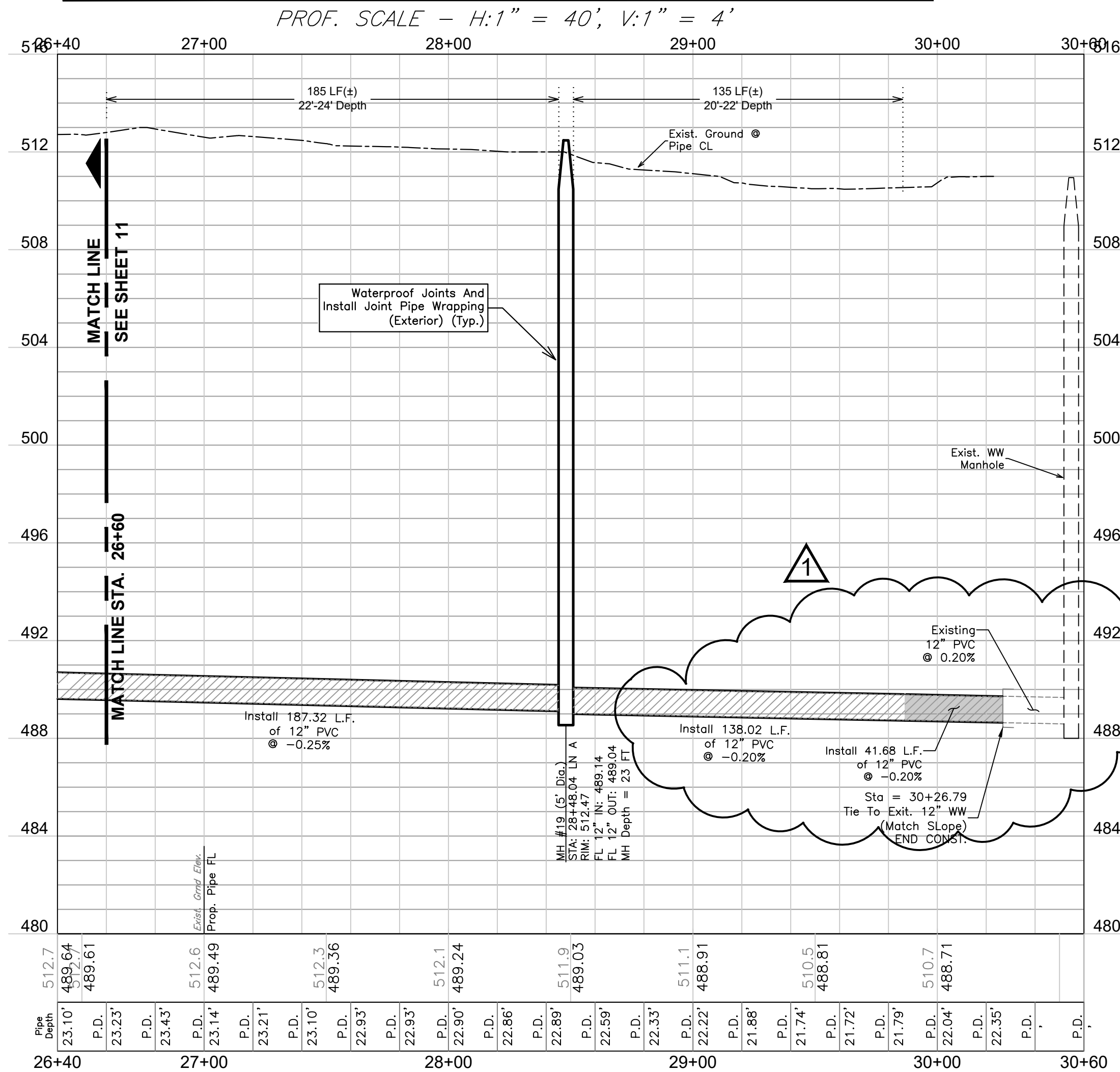
CONTRACTOR TO REMOVE AND REPLACE PLANTINGS INCLUDING TREES, SHRUBS, MULCH, METAL BORDER AND RESTORE IRRIGATION SYSTEM WITH WHAT IS EXISTING OR APPROVED IN THE MANOR CODE OF ORDINANCE CHAPTER 15 ARTICLE 15.03, SEC. 15.03.006(o)

CURRENT INVENTORY:

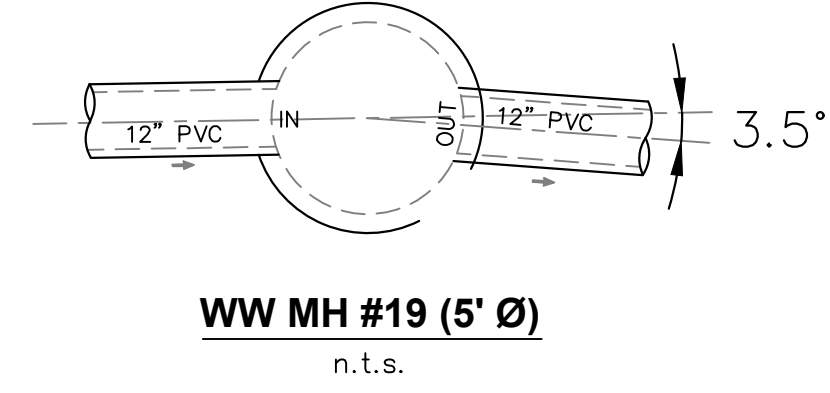
- (20) TWENTY CREPE MYRTLE TREES.
- (39) THIRTY-NINE SHRUBS.
- MULCH.
- METAL BORDER.
- IRRIGATION SYSTEM



12" PVC WASTEWATER GRAVITY - PROFILE - LINE A

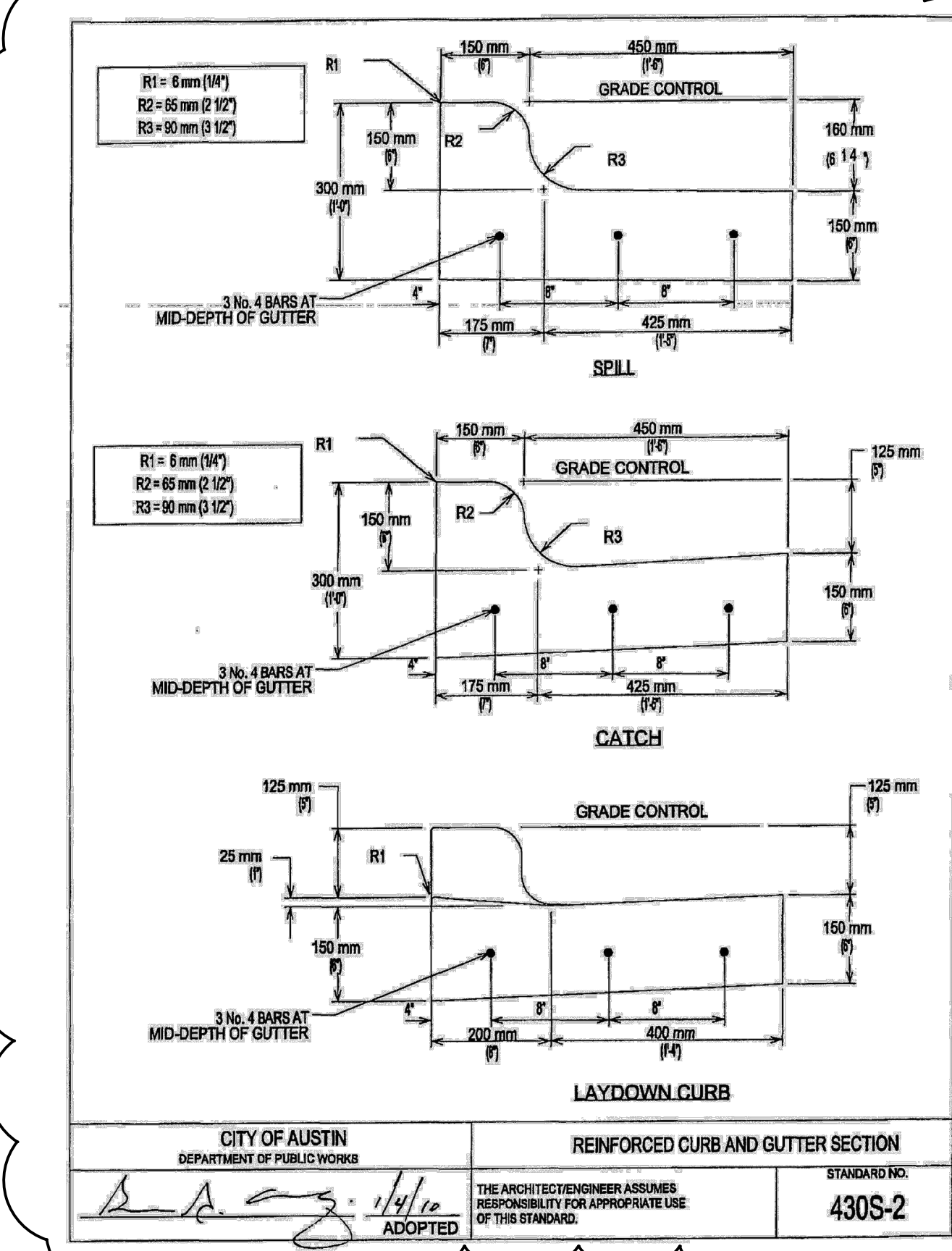


Pipe Inverts
 12" PVC (In): 489.14(E)
 12" PVC (Out): 489.04(NW)



DEMOLITION NOTE A:

- DE-WATER EXISTING 8" WW LINE AND MANHOLES.
- GROUT & PLUG EXISTING 8" WASTEWATER LINE AT BOTH ENDS.
- REMOVE EXISTING MANHOLE CONE SECTION.
- FILL w/ FLOWABLE FILL TO TOP RING.
- BACKFILL TO EXISTING GRADE.
- REVEGETATE.



LEGEND

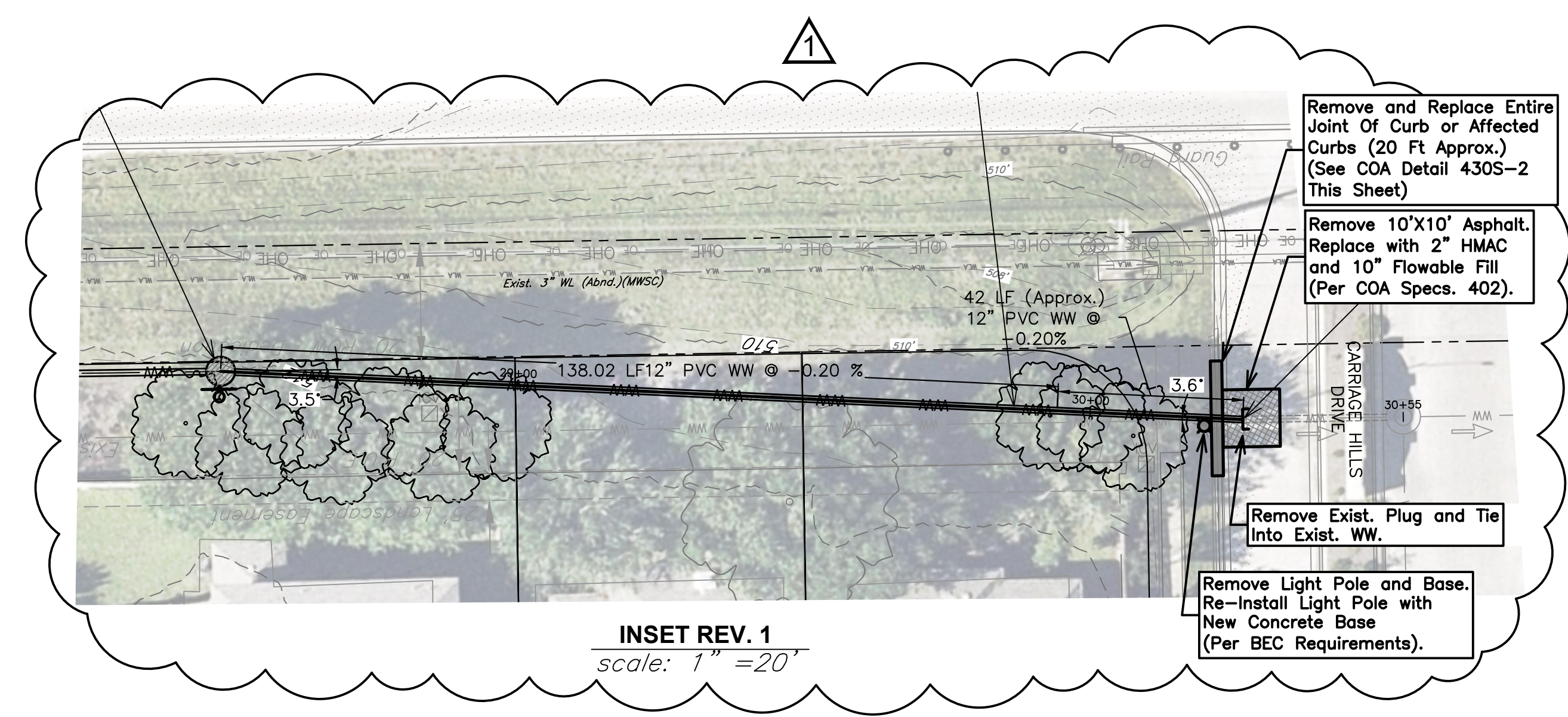
SURVEY	
□	BENCHMARK
●	IRON ROD FOUND
○	1/2" IRON ROD FOUND
●	IRON ROD W/ CAP FOUND
○	TYPE 1 TXDOT MONUMENT FOUND
○	TYPE 2 TXDOT MONUMENT FOUND
△	60D NAIL FOUND
▲	CALCULATED POINT

EXISTING	
○	POWER POLE
○	LIGHT POLE
○	GUY
○	OVERHEAD UTILITIES
○	ELECTRIC BOX
○	TELEPHONE RISER
○	TELEPHONE MANHOLE
○	UTILITY VAULT
○	CABLE MARKER
○	GAS MARKER
○	FIRE HYDRANT
○	WATER METER
○	WATER VALVE
○	WATER MANHOLE
○	WATER MARKER
○	WASTEWATER MANHOLE
○	MAILBOX
○	SIGN
○	FENCE POST
○	BARB WIRE FENCE
○	CHAIN-LINK FENCE
○	WOOD FENCE
○	ELECTRIC FENCE
○	METAL PIPE FENCE
○	WATER LINE
○	WASTEWATER LINE
○	PROPERTY LINE
○	CONTOUR LINE
○	WLA - WATER LINE (Abandoned)
○	WS - WATER SERVICE LINE

PROPOSED	
○	WASTEWATER GRAVITY LINE
○	PROPOSED MANHOLE (4' Dia.)
○	PROPOSED SINGLE SERVICE
○	PROPOSED DOUBLE SERVICE

WWE = Wastewater Easement
 TCE = Temporary Construction Easement
 MWSC = Manville Water Supply Corp.

TREE NOTE:
 ○ = INVENTORY, REMOVE & REPLACE TREES.



GBA
 Leander Office
 County Road 269
 Leander, TX 78641
 512.259.3882
 Austin Office
 9601 Amberglen #109
 Austin, TX 78729
 737.247.7500
 gbateam.co
 Texas Eng. Firm #4242

12IN PVC WASTEWATER LINE A (4 OF 4)

REVISION		
△	Rev. WW From MH #19 To Ex. Cap/Plug	PMG 01/15/25
PROJECT NUMBER 15072.00		
DATE 1/20/2025		
DESIGNED TS		
DRAWN JJD		
REVIEWED FTP/PG		
MUNICIPALITY		
CIP Project		
NA		
SHEET NUMBER		
9		

G:\15072\Civil 3D\Production Drawings\Sanitary Sewer\Plans\1st Subm\Wastewater\15072X0501_WW P&P_LN A.dwg Layout: 9 Monday January 20, 2025, 9:08am Copyright 2025, George Butler Associates, Inc.

