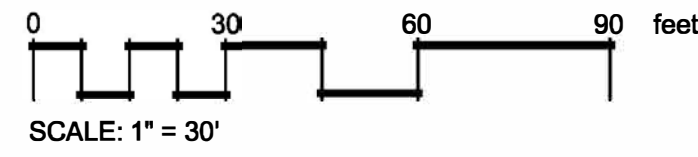


**NOTES**

- The developer and subsequent owners of the landscaped property, or the manager or agent of the owner, shall be responsible for the maintenance of all landscaped areas. Said areas shall be maintained so as to present a healthy, neat and orderly appearance at all times and shall be kept free of refuse and debris. All planted areas shall be provided with a readily available water supply and watered as necessary to ensure continuous healthy growth and development. Maintenance shall include the replacement of all dead plant material if that material was used to meet the requirements of the Subdivision Regulations.
- Irrigation sleeves shall be run to all landscaped areas prior to concrete pour.
- Drip irrigation in all beds, & spray irrigation in all lawn areas.
- Provide mulch ring around base of all proposed trees as shown in detail 1 on the specifications sheet. These mulch quantities are in addition to what's shown within the plant list.



**TREE LIST**

TAG	CALIPER	SPECIES	STATUS
289	9"	CEDAR	REMOVE, NO MIT
290	8"/9"	CEDAR	REMOVE, NO MIT
292	9"	CEDAR	KEEP
293	11"	CEDAR	KEEP
294	8"	CEDAR	REMOVE, NO MIT
295	9"/5"	CEDAR	REMOVE, NO MIT
296	8"	CEDAR	KEEP
297	8"	ELM	REMOVE
298	10"	ELM	REMOVE
299	8"	ELM	REMOVE
300	9"	ELM	REMOVE
301	8"	ELM	KEEP
302	9"	ELM	KEEP
303	9"	ELM	KEEP
304	9"	ELM	REMOVE
305	11"	ELM	KEEP
306	11"	HACKBERRY	KEEP
307	9"	HACKBERRY	KEEP
308	15"	HACKBERRY	KEEP
309	9"	HACKBERRY	KEEP
310	8"	ELM	KEEP
311	15"/15"	WILLOW	KEEP
312	8"	WILLOW	KEEP
313	9"	WILLOW	KEEP
314	10"	WILLOW	KEEP

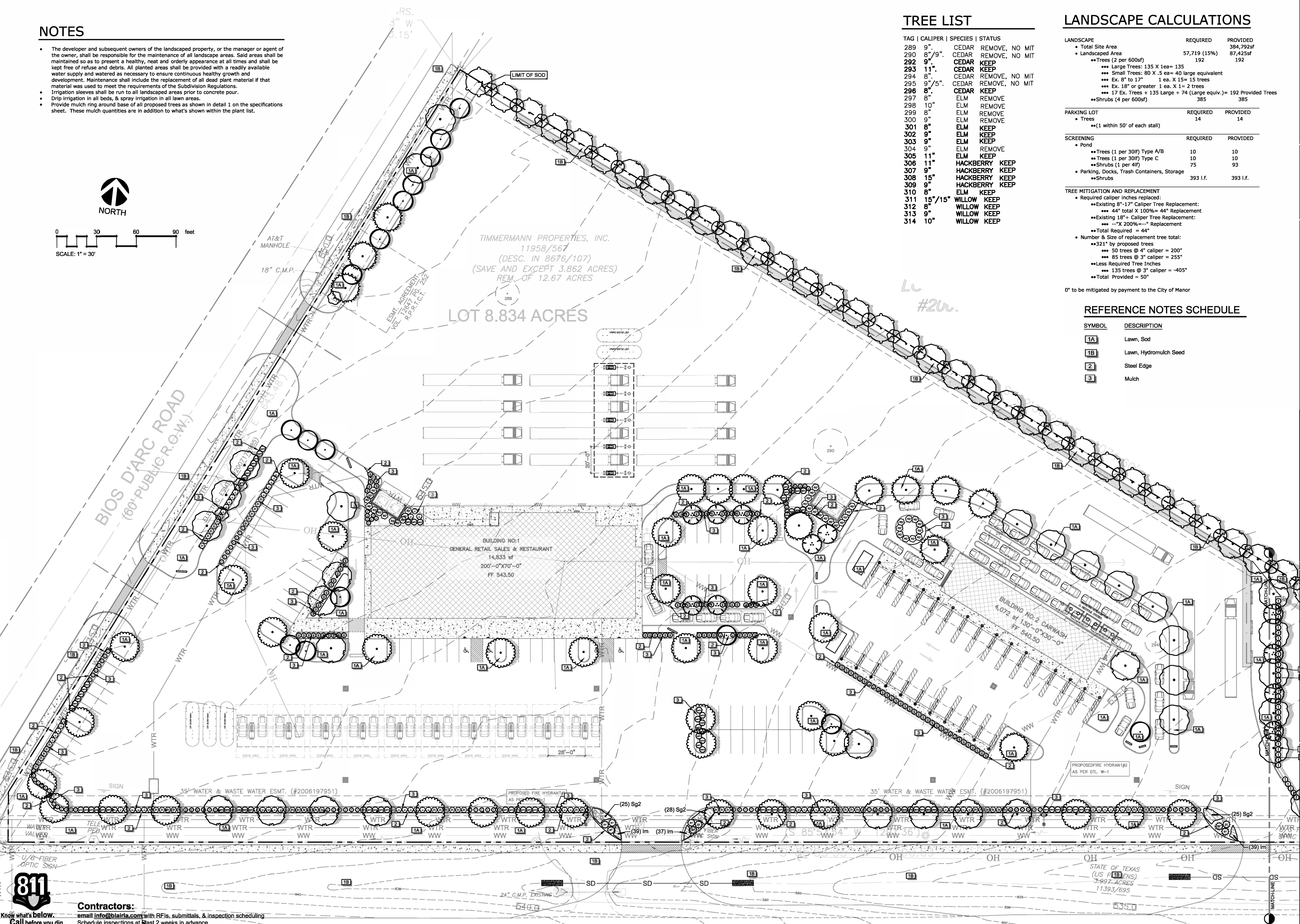
**LANDSCAPE CALCULATIONS**

LANDSCAPE	REQUIRED	PROVIDED
Total Site Area		384,792sf
Landscaped Area	57,719 (15%)	87,425sf
• Trees (2 per 600sf)	192	192
••• Large Trees: 135 X 1ea = 135		
••• Small Trees: 80 X .5 ea = 40 large equivalent		
••• Ex. 8" to 17" 1 ea. X 15 = 15 trees		
••• Ex. 18" or greater 1 ea. X 1 = 2 trees		
••• 17 Ex. Trees + 135 Large + 74 (Large equiv.) = 192 Provided Trees		
•• Shrubs (4 per 600sf)	385	385
<b>PARKING LOT</b>	<b>REQUIRED</b>	<b>PROVIDED</b>
• Trees	14	14
•• (1 within 50' of each stall)		
<b>SCREENING</b>	<b>REQUIRED</b>	<b>PROVIDED</b>
• Pond		
•• Trees (1 per 30lf) Type A/B	10	10
•• Trees (1 per 30lf) Type C	10	93
•• Shrubs (1 per 4lf)	75	
• Parking, Docks, Trash Containers, Storage		
•• Shrubs	393 l.f.	393 l.f.
<b>TREE MITIGATION AND REPLACEMENT</b>		
• Required caliper inches replaced:		
•• Existing 8"-17" Caliper Tree Replacement:		
••• 44" total X 100% = 44" Replacement		
•• Existing 18"+ Caliper Tree Replacement:		
••• "X 200% = " Replacement		
•• Total Required = 44"		
• Number & Size of replacement tree total:		
•• 321' by proposed trees		
••• 50 trees @ 4" caliper = 200"		
••• 85 trees @ 3" caliper = 255"		
•• Less Required Tree Inches		
••• 135 trees @ 3" caliper = -405"		
•• Total Provided = 50"		

0" to be mitigated by payment to the City of Manor

**REFERENCE NOTES SCHEDULE**

SYMBOL	DESCRIPTION
1A	Lawn, Sod
1B	Lawn, Hydromulch Seed
2	Steel Edge
3	Mulch



<b>Date</b>	
<b>Description</b>	
<b>Rev</b>	
Consultant Seal	
Company Name and Address	
William S. Blair (512) 522-8979 info@blairla.com www.blairla.com 100 Congress Ave. Ste 2000 Austin, TX 78701	
William S. Blair June 21, 2023	
Project Name and Address	
<b>MinMAX 11</b> 13320 E US HWY 290 Manor, Texas 76653	
Sheet Title	
<b>Landscape Plan</b>	
Design By: Will Blair Checked By: oooo Issue Date: 05/18/2021 Project Number: 21050-LP	
<b>20</b> OF 25	
2021-P-1336-SP	

6/7/2023 10:49 AM c:\d\dropbox\proj\minmax 11\manor\_parc\_rehlm\_mareo\minmax 11\_manor.dwg

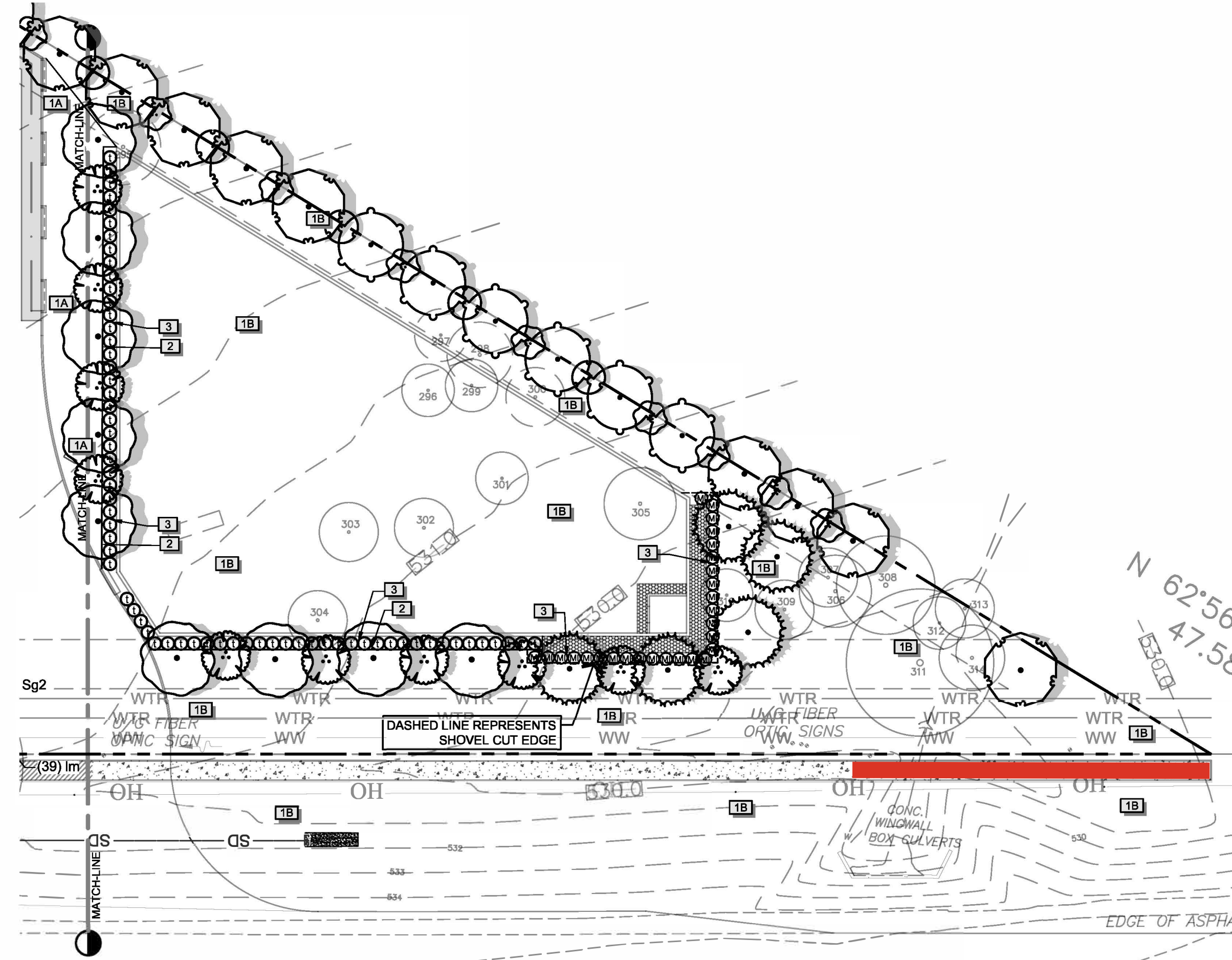


**Contractors:**  
 email info@blairla.com with RFIs, submittals, & inspection scheduling  
 Schedule inspections at least 2 weeks in advance

will blair 6/21/2023 10:49 AM c:\bla\_dropbox\projects\minimax 11\_mano\_ pasc\_ rehm\_mared\yminimax11\_mano.dwg

### TREE LIST

TAG	CALIPER	SPECIES	STATUS
289	9"	CEDAR	REMOVE, NO MIT
290	8"/9"	CEDAR	REMOVE, NO MIT
292	9"	CEDAR	KEEP
293	11"	CEDAR	KEEP
294	8"	CEDAR	REMOVE, NO MIT
295	9"/5"	CEDAR	REMOVE, NO MIT
296	8"	CEDAR	KEEP
297	8"	ELM	REMOVE
298	10"	ELM	REMOVE
299	8"	ELM	REMOVE
300	9"	ELM	REMOVE
301	8"	ELM	KEEP
302	9"	ELM	KEEP
303	9"	ELM	KEEP
304	9"	ELM	REMOVE
305	11"	ELM	KEEP
306	11"	HACKBERRY	KEEP
307	9"	HACKBERRY	KEEP
308	15"	HACKBERRY	KEEP
309	9"	HACKBERRY	KEEP
310	8"	ELM	KEEP
311	15"/15"	WILLOW	KEEP
312	8"	WILLOW	KEEP
313	9"	WILLOW	KEEP
314	10"	WILLOW	KEEP



### NOTES

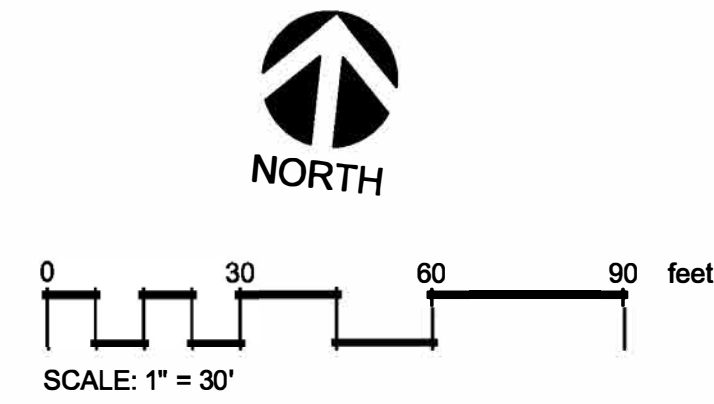
- The developer and subsequent owners of the landscaped property, or the manager or agent of the owner, shall be responsible for the maintenance of all landscape areas. Said areas shall be maintained so as to present a healthy, neat and orderly appearance at all times and shall be kept free of refuse and debris. All planted areas shall be provided with a readily available water supply and watered as necessary to ensure continuous healthy growth and development. Maintenance shall include the replacement of all dead plant material if that material was used to meet the requirements of the Subdivision Regulations.
- Irrigation sleeves shall be run to all landscaped areas prior to concrete pour.
- Drip irrigation in all beds, & spray irrigation in all lawn areas.
- Provide mulch ring around base of all proposed trees as shown in detail 1 on the specifications sheet. These mulch quantities are in addition to what's shown within the plant list.

### REFERENCE NOTES SCHEDULE

SYMBOL	DESCRIPTION
1A	Lawn, Sod
1B	Lawn, Hydromulch Seed
2	Steel Edge
3	Mulch

### PLANT SCHEDULE

TREES	CODE	COMMON NAME	BOTANICAL NAME	CONT	CAL	SIZE	QTY
	bo4	Bald Cypress	Taxodium distichum	-	4"Cal	6' H min	15
	bo4	Burr Oak	Quercus macrocarpa	-	4"Cal	6' H min	35
	ce3	Cedar Elm	Ulmus crassifolia	-	3"Cal	6' H min	38
	ms3	Mexican Sycamore	Platanus mexicana	-	3"Cal	6' H min	24
	sr3	Shumard Red Oak	Quercus shumardii	-	3" Cal	6' H min	23
	as2	American Smoke Tree	Cotinus obovatus	-	2"Cal	6' H min	20
	cm2	Crape Myrtle, Muskogee	Lagerstroemia indica 'Muskogee'	-	2"Cal	6' H min	16
	dw2	Desert Willow	Chilopsis linearis	-	2"Cal	6' H min	17
	yh2	Yaupon Holly	Ilex vomitoria	-	2"Cal	6' H min	27
	by	Beaked Yucca, 'Blue Velvet'	Yucca rostrata 'Blue Velvet'	3 gal			9
	ep	Thorny Elaeagnus	Elaeagnus pungens	3 gal			36
	g	Gulf Muhly Grass	Muhlenbergia capillaris 'Autumn Blush'	3 gal			97
	ih	Clara Indian Hawthorn	Rhaphiolepis indica 'Clara'	3 gal			60
	Ml	Lindheimer's Muhly	Muhlenbergia lindheimeri	5 gal			27
	r	Red Yucca	Hesperaloe parviflora	3 gal			79
	t	Texas Sage 'Silverado'	Leucophyllum frutescens 'Silverado'	5 gal			66
	u	Upright Rosemary	Rosmarinus officinalis	3 gal			63
	wm	Dwarf Southern Wax Myrtle	Myrica pusilla	3 gal			81
	y	Soft Leaf Yucca	Yucca pendula	3 gal			15
	Sg2	Green Santolina	Santolina pinnata	3 gal		24" o.c.	78
	lm	Lilyturf	Liriope muscari	3 gal		12" o.c.	115



Date									
Description									
Rev									
Consultant Seal									
Company Name and Address									
William S. Blair (512) 522-8979 info@blairla.com www.blairla.com 100 Congress Ave. Ste 2000 Austin, TX 78701									
<b>BLAIR LANDSCAPE ARCHITECTURE, LLC</b> QUALITY. INTEGRITY. RELIABILITY.									
William S. Blair June 21, 2023									
Project Name and Address									
<b>MinMAX 11</b> 13320 E US HWY 290 Manor, Texas 78653									
Sheet Title									
<b>Landscape Plan</b>									
Design By: Will Blair Checked By: none Issue Date: 05/16/2021 Project Number: 21050-LP									
21 of 25									
2021-P-1336-SP									

**Contractors:**  
 email info@blairla.com with RFIs, submittals, & inspection scheduling  
 Schedule inspections at least 2 weeks in advance

**Know what's below.**  
**Call before you dig.**