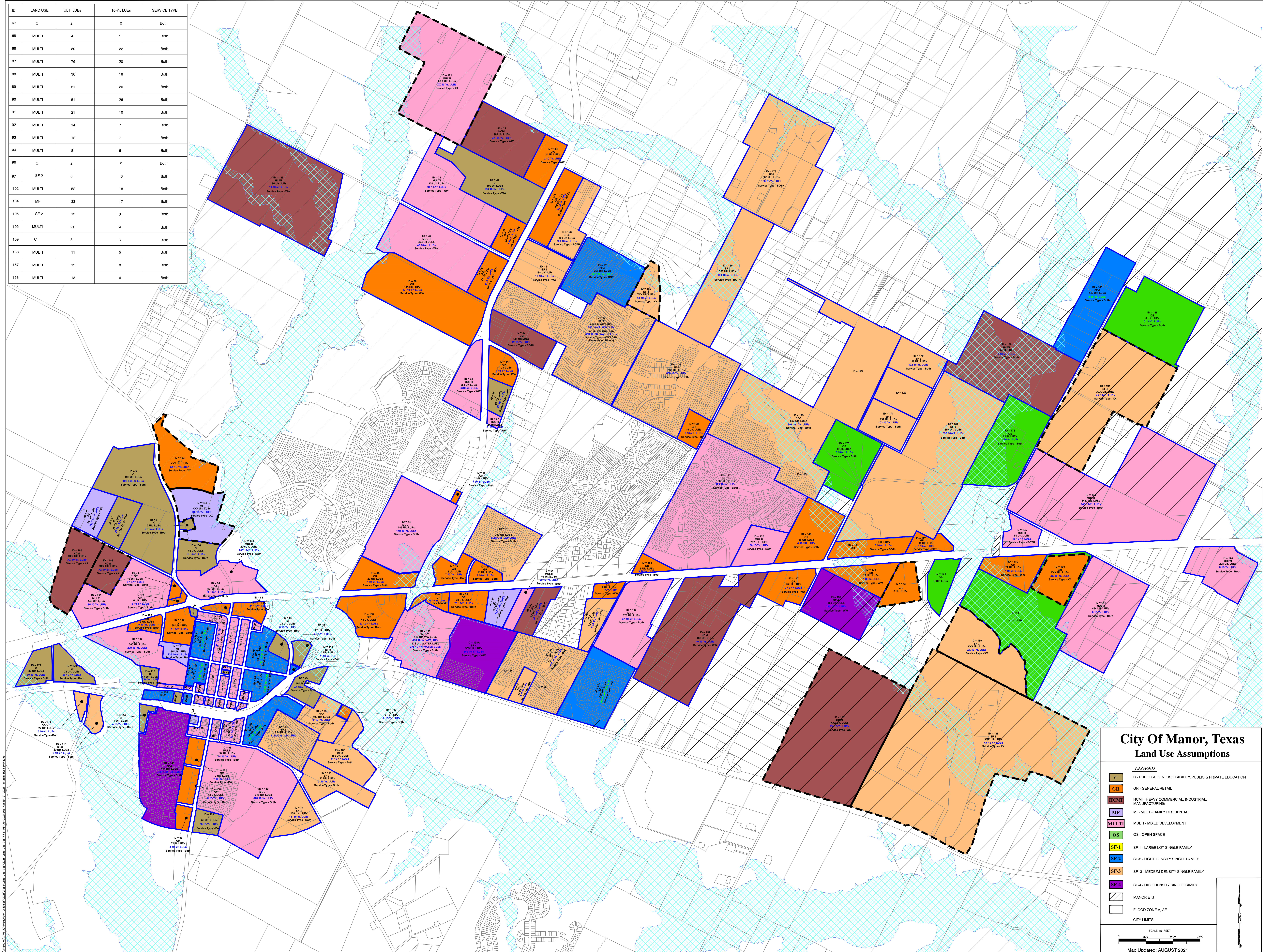


ID	LAND USE	ULT. LUEs	10-Yr. LUEs	SERVICE TYPE
67	C	2	2	Both
68	MULTI	4	1	Both
86	MULTI	80	22	Both
87	MULTI	70	20	Both
88	MULTI	36	18	Both
89	MULTI	51	26	Both
90	MULTI	51	26	Both
91	MULTI	21	10	Both
92	MULTI	14	7	Both
93	MULTI	12	7	Both
94	MULTI	8	6	Both
97	SF-2	8	6	Both
102	MULTI	52	18	Both
104	MF	33	17	Both
105	SF-2	15	6	Both
106	MULTI	21	9	Both
109	C	3	3	Both
156	MULTI	11	5	Both
157	MULTI	15	8	Both
158	MULTI	13	6	Both



City of Manor, Texas Land Use Assumptions

LEGEND

- C** - PUBLIC & GEN. USE FACILITY, PUBLIC & PRIVATE EDUCATION
- GR** - GENERAL RETAIL
- HCM** - HEAVY COMMERCIAL, INDUSTRIAL, MANUFACTURING
- MF** - MULTI-FAMILY RESIDENTIAL
- MULTI** - MULTI - MIXED DEVELOPMENT
- OS** - OPEN SPACE
- SF-1** - SF-1 - LARGE LOT SINGLE FAMILY
- SF-2** - SF-2 - LIGHT DENSITY SINGLE FAMILY
- SF-3** - SF-3 - MEDIUM DENSITY SINGLE FAMILY
- SF-4** - SF-4 - HIGH DENSITY SINGLE FAMILY
- MANOR ETJ**
- FLOOD ZONE A, AE**
- CITY LIMITS**

SCALE IN FEET
0 500 1000 2000

Map Updated: AUGUST 2021

Legend

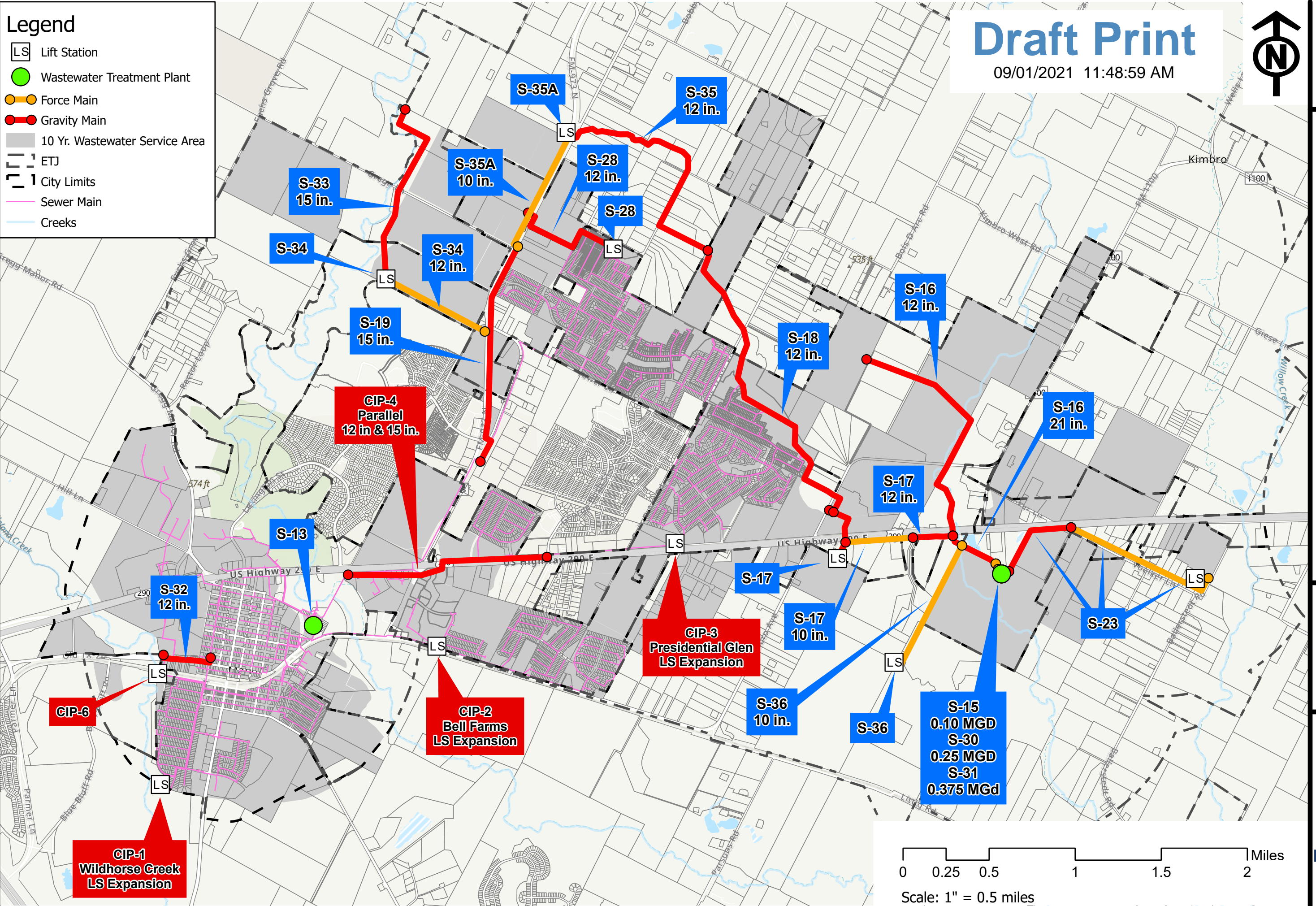
- LS Lift Station
- Wastewater Treatment Plant
- Force Main
- Gravity Main
- 10 Yr. Wastewater Service Area
- ETJ
- City Limits
- Sewer Main
- Creeks

Draft Print

09/01/2021 11:48:59 AM

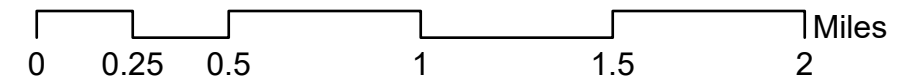


EXHIBIT
A-3



CITY OF MANOR
10 YEAR WASTEWATER
CAPITAL IMPROVEMENTS PLAN
2021 UPDATE

PROJECT NUMBER	14966.00
DATE	8/18/2021



Scale: 1" = 0.5 miles