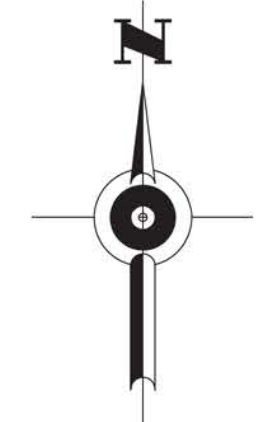
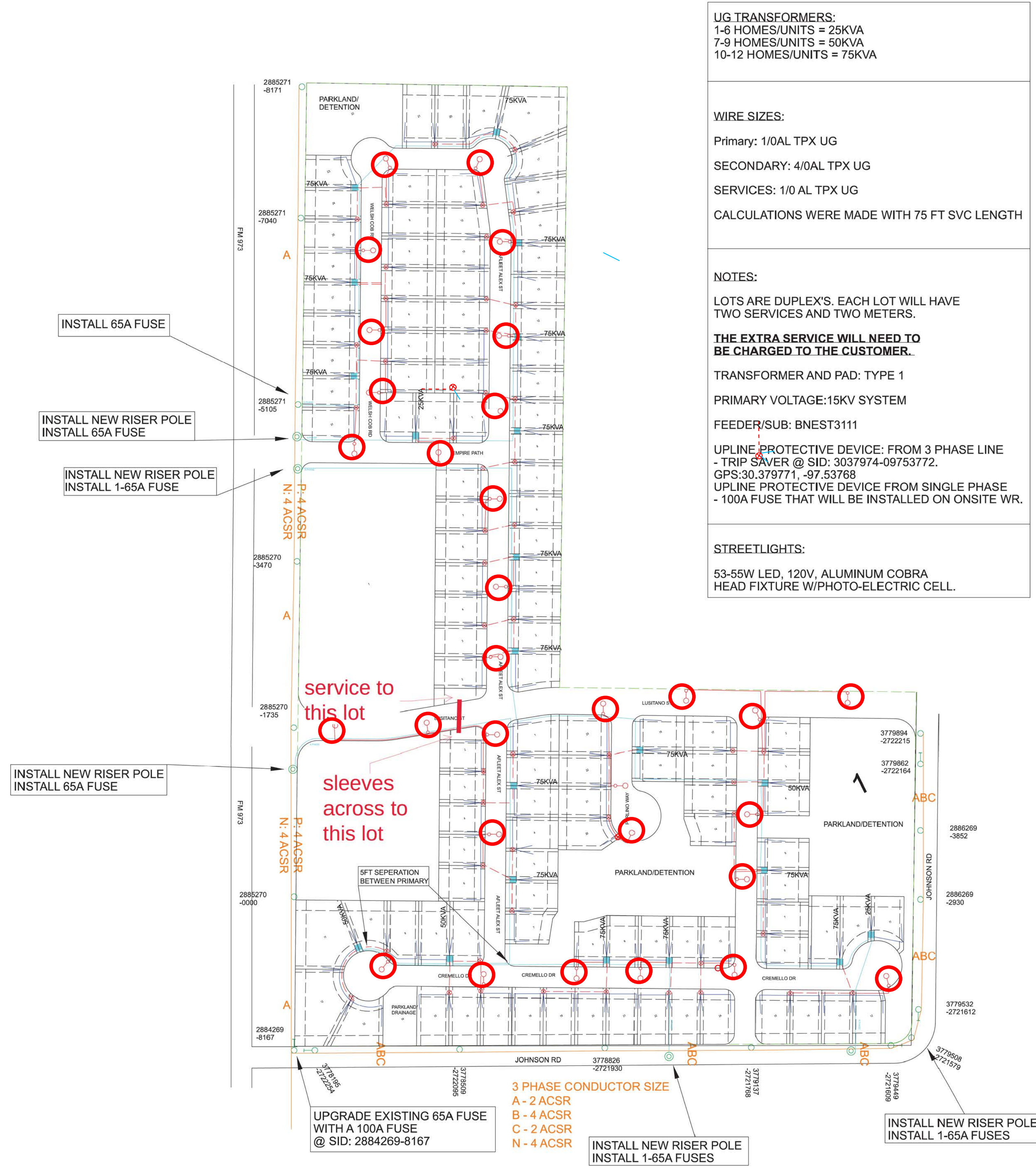


FINAL FOR CONSTRUCTION



ONCOR REQUIREMENTS OF CONTRACTOR:
 Materials and workmanship must be inspected by Oncor Electric Delivery prior to any cover-up.
Contact Phillip Redman, Oncor Electric Delivery FCC at 254-541-3619 to schedule your inspection.
 A twenty-four (24) hour advance notice is needed for scheduling the inspection.
 Your contractor must have the attached specification package and construction print in possession at the time of inspections.
Contact Phillip Redman, Oncor Electric Delivery FCC at 254-541-3619 for:
 Material delivery: dates, quantities, back ordered items, tracking material delivery, etc.
 Conduit sizes, number of bends, pull lengths.
 ABC phasing on prints, questions about prints, alignment of existing facilities and proposed facilities.
 Types of transformers.
 Updating NCM PM on status of WAS Contractor civil completion.
****Before material is ordered a Pre-con meeting shall be coordinated**

ELECTRICAL FACILITIES LEGEND

	PEDESTAL
	HAND HOLE
	STREET LIGHT
	TRANSFORMER PAD
	SWITCHGEAR PAD
	PULL BOX
	EXISTING ONCOR POLE
	PROPOSED ONCOR POLE
	DOWNGUY
	OVERHEAD TRANSFORMER

	PRIMARY CONDUIT	SIZE	SECONDARY CONDUIT
	1 IN.		
	2 IN.		
	3 IN.		
	4 IN.		
	6 IN.		

	EASEMENT LINE		PHASE DIVISION
--	---------------	--	----------------

ONCOR ELECTRIC DELIVERY
 DISTRIBUTION PROJECT MANAGEMENT AND DESIGN SERVICES

PROJ. NAME : RRK: MANOR: PALOMINO
 LOCATION : FM 973 - MANOR
 PROJ. MGR. : JIM RUMNOW
 DESIGNER : RYAN RANGEL
 W/R # : 3526562
 PLOT SCALE : NTS

DATE: 05/05/2022