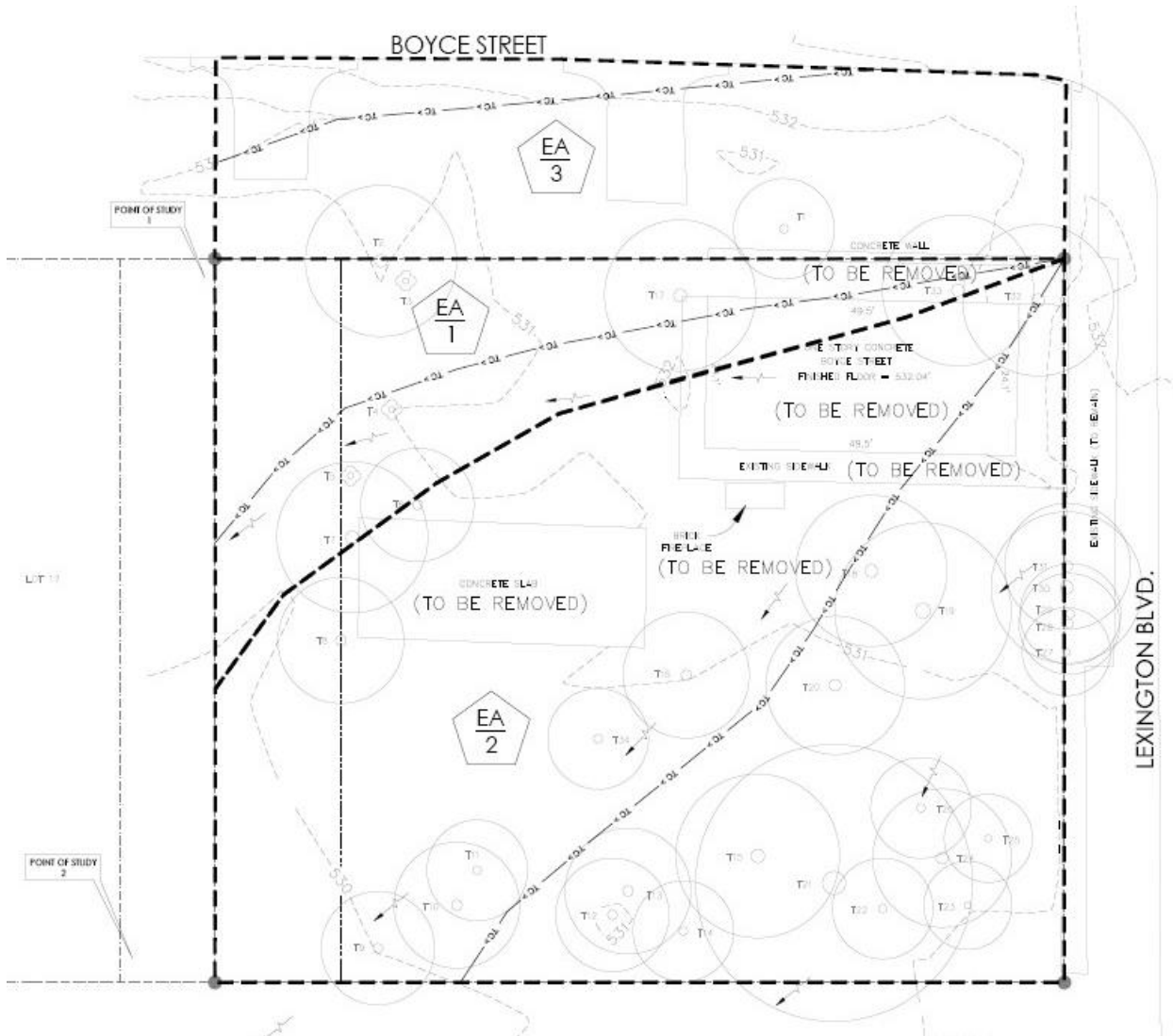


## Proposed Stormwater Runoff Rates Summary for City of Manor Stormwater Variance

PROPOSED STORMWATER RUNOFF RATES SUMMARY										
109 North Lexington, Manor, TX 78653										
Study Point 1	Area (FT <sup>2</sup> )	Area (AC)	IC (FT <sup>2</sup> )	IC (AC)	CN	Tc. (min)	Q2 (cfs)	Q10 (cfs)	Q25 (cfs)	Q100 (cfs)
Existing Study Point 1 (EA3)	4,179.8	0.10	583.0	0.01	-	-	0.3	0.6	0.8	1.1
Proposed Condition (DA1+DA3)	5,899.8	-	-	0.08	-	-	0.7	1.1	1.4	1.8
DA1	1,720.0	0.04	330.0	0.01	83.45	5.00	0.2	0.3	0.4	0.5
DA3	4,179.8	0.10	3,231.5	0.07	93.92	5.00	0.50	0.80	1.00	1.30
Study Point 2	Area (FT <sup>2</sup> )	Area (AC)	IC (FT <sup>2</sup> )	IC (AC)	CN	Tc. (min)	Q2 (cfs)	Q10 (cfs)	Q25 (cfs)	Q100 (cfs)
Existing Study Point 2 (EA1+EA2)	15,525.0	-	-	0.00	-	-	1.2	2.1	2.8	3.8
Proposed Conditions (DA2)	13,805.0	0.32	12,527.0	0.29	96.33	5.00	1.9	2.9	3.5	4.6

### Existing Drainage Map



# Proposed Drainage Map

