



# LEXINGTON CENTER

11211 HWY 290  
MANOR, TEXAS 78653

## UNIFORM SIGN PLAN

Prepared for:

Latipac Property Management, Inc.

512.909.1516 • 16022 Meurer Ln. Bldg 1, Del Valle, Tx 78617 • [www.AustinSignBuilders.com](http://www.AustinSignBuilders.com)

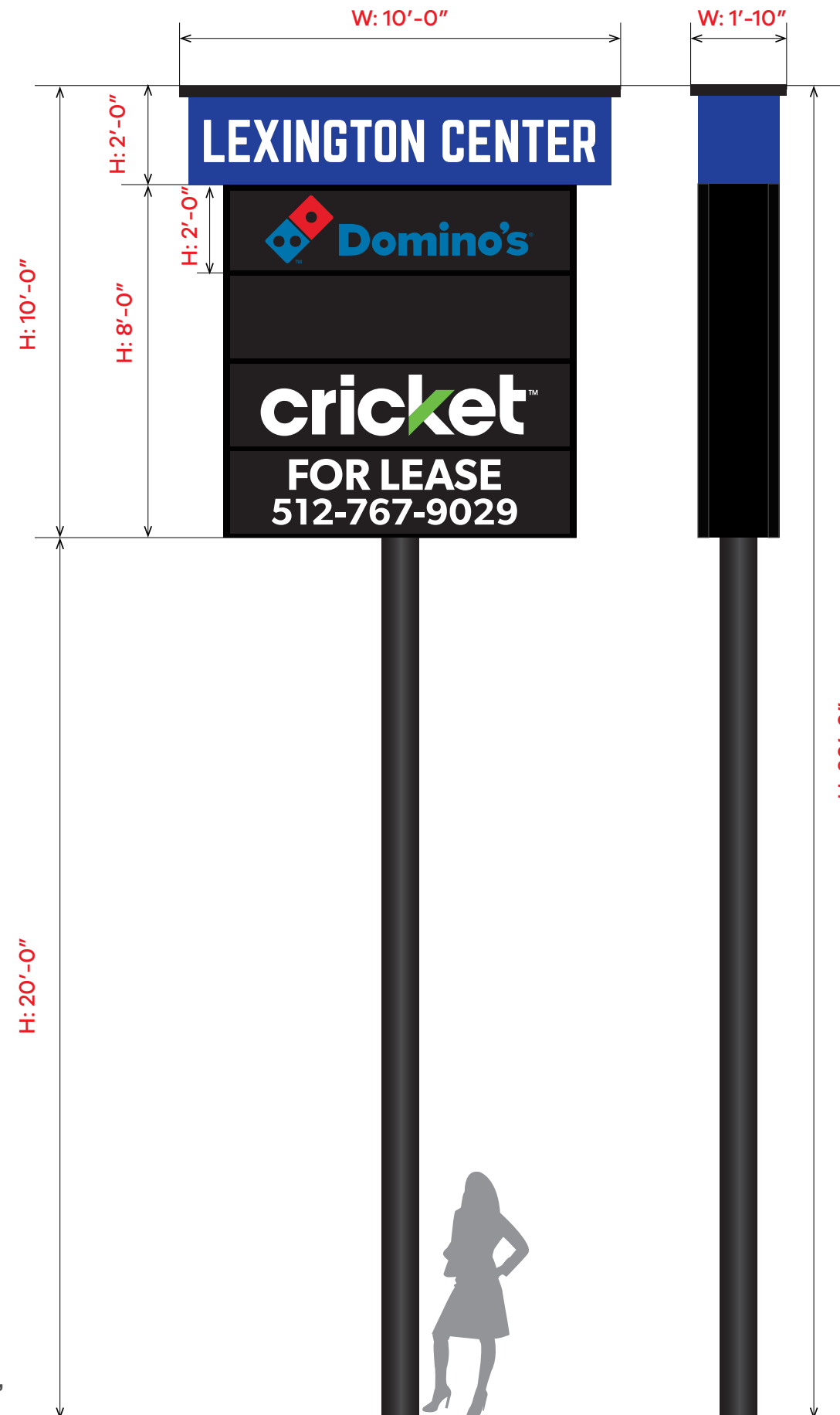


# A

## MULTI-TENANT PYLON SIGN

FABRICATE AND INSTALL ONE (1) DOUBLE SIDED MULTI-TENANT PYLON SIGN W/ ACRYLIC FACE CABINETS TO UL SPECIFICATIONS.

- WELDED SQ. TUBING FRAME WITH ALUMINUM PLATE FINISHED MP BLACK
- TENANT PANEL FACES WITH FIRST SURFACE 3M BLACK VINYL AND LOGOS IN COLOR
- HEADER CABINET TO BE ROUTED OUT AND BACKED WITH WHITE ACRYLIC.
- SIGN TO BE INTERNALLY ILLUMINATED WITH 6500L WHITE LED LIGHTS
- FOUNDATION AND POLE PER ENGINEERING



SCALE: 1" = 3.33'

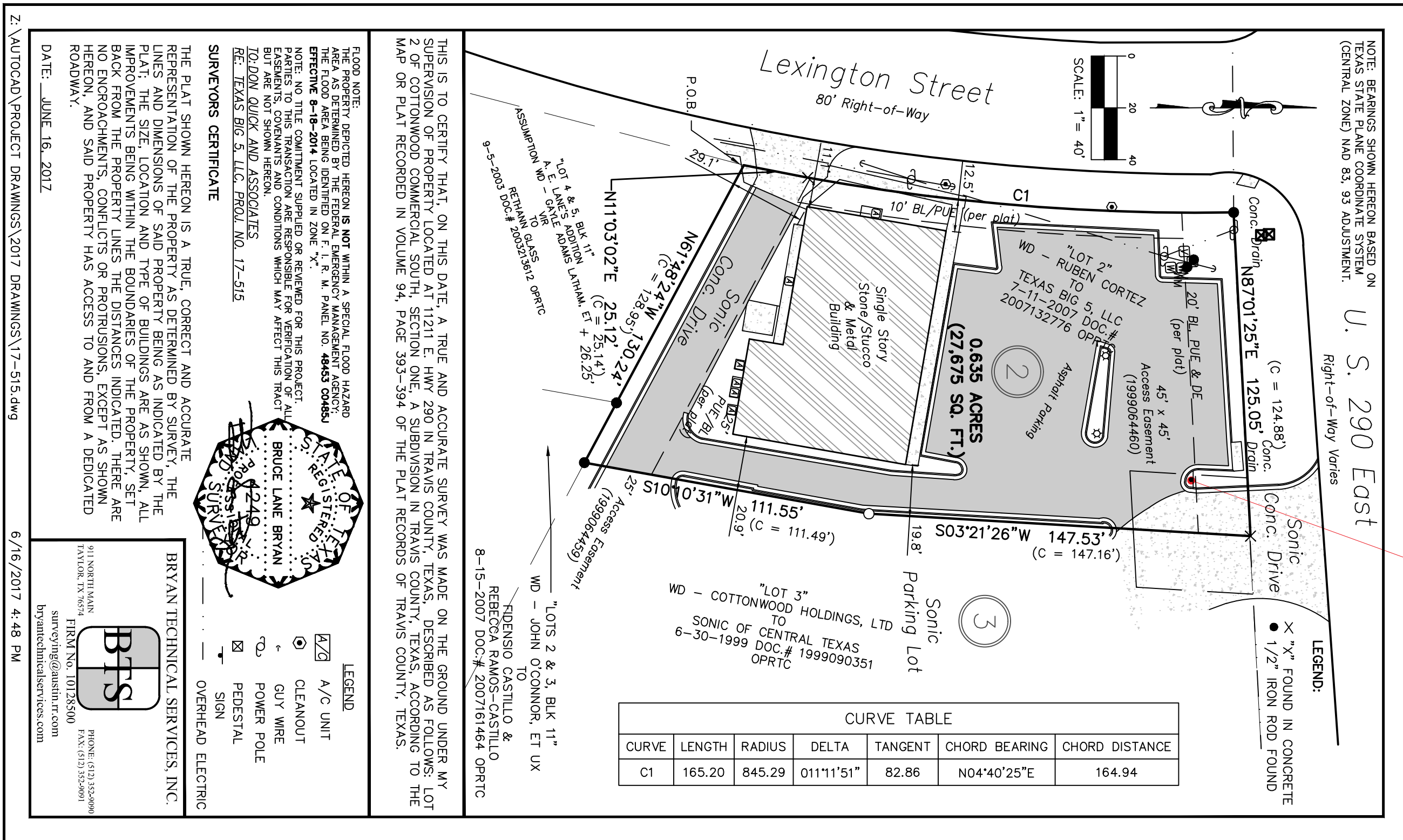
Client's Approval:	Landlord's Approval:	Job #: 2877	Project Start Date: 03/03/21
Date:	Date:	Artist: <i>Juan</i>	Rev. #1: 03/03/21   Page: 1 of 5



Z:\AUTOCAD\PROJECT DRAWINGS\2017 DRAWINGS\17-515.dwg

6/16/2017 4:48 PM

Client's Approval:	Landlord's Approval:	Job #: 2877	Project Start Date: 03/03/21
Date:	Date:	Artist: Juan	Rev. #1: 03/03/21



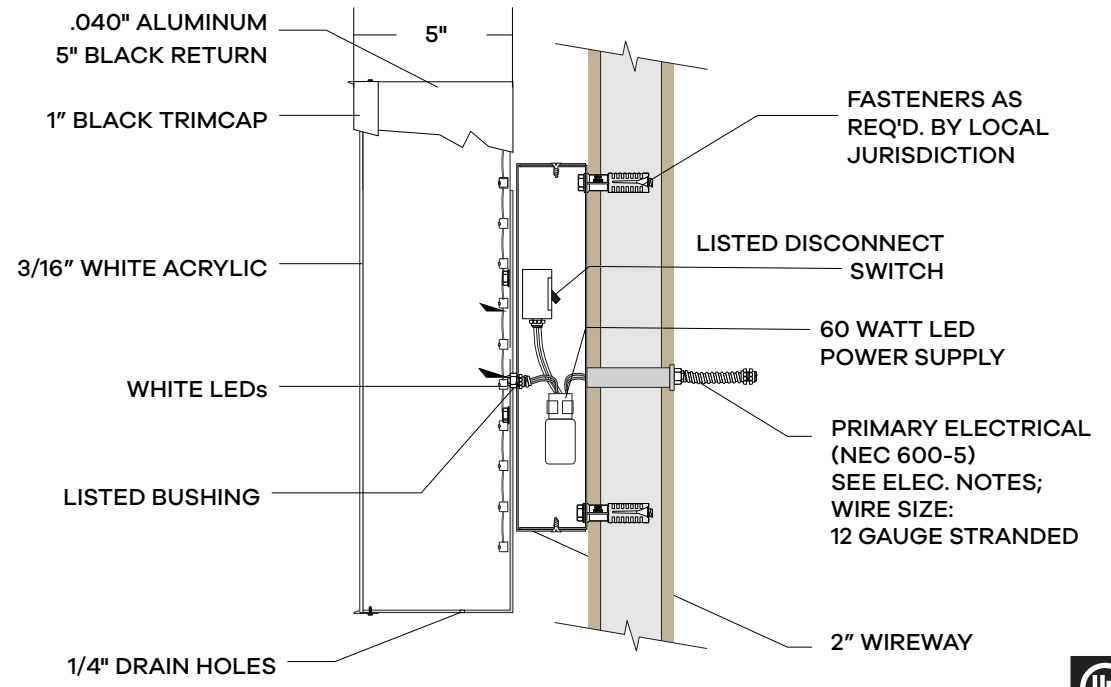
# B

## TENANT WALL SIGNAGE EXAMPLE

FABRICATE AND INSTALL ONE (1) SET OF INTERNALLY ILLUMINATED FRONT LIT CHANNEL LETTERS TO UL SPECIFICATIONS.

- .063 ALUMINUM BACKS PAINTED WHITE
- .040 ALUMINUM 5" RETURNS PAINTED BLACK
- 1" TRIMCAP (COLOR PER TENANT ART)
- 3/16 PLEX OVERLAID WITH VINYL TO MATCH ARTWORK (PER TENANT ART)
- WHITE LED LIGHTS FOR ILLUMINATION
- LETTERS TO BE MOUNTED ON A 2"X7" WIREWAY PAINTED TO MATCH FACADE

## ELECTRICAL PLANS FRONT LIT CHANNEL LETTER SIGN ON WIREWAY



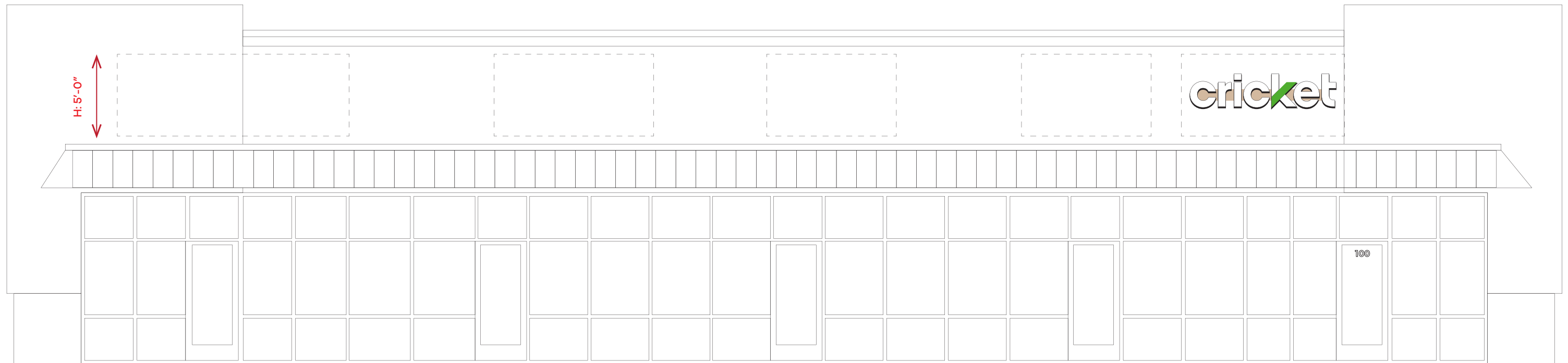
16022 Meurer Ln. Bldg 1, Del Valle, Tx 78617  
 Juan Escobar | juan@AustinSignBuilders.com  
 512.909.1516 | www.AustinSignBuilders.com

NOT TO EXCEED 75% OF STORE FRONT

NOT TO EXCEED 48"

cricket

Client's Approval:	Landlord's Approval:	Job #: 2877	Project Start Date: 03/03/21
Date:	Date:	Artist: <i>Juan</i>	Rev. #1: 03/03/21   Page: 3 of 5



91' OVERALL BUILDING WIDTH

Client's Approval:	Landlord's Approval:	Job #: 2877	Project Start Date: 03/03/21
Date:	Date:	Artist: <i>Juan</i>	Rev. #1: 03/03/21

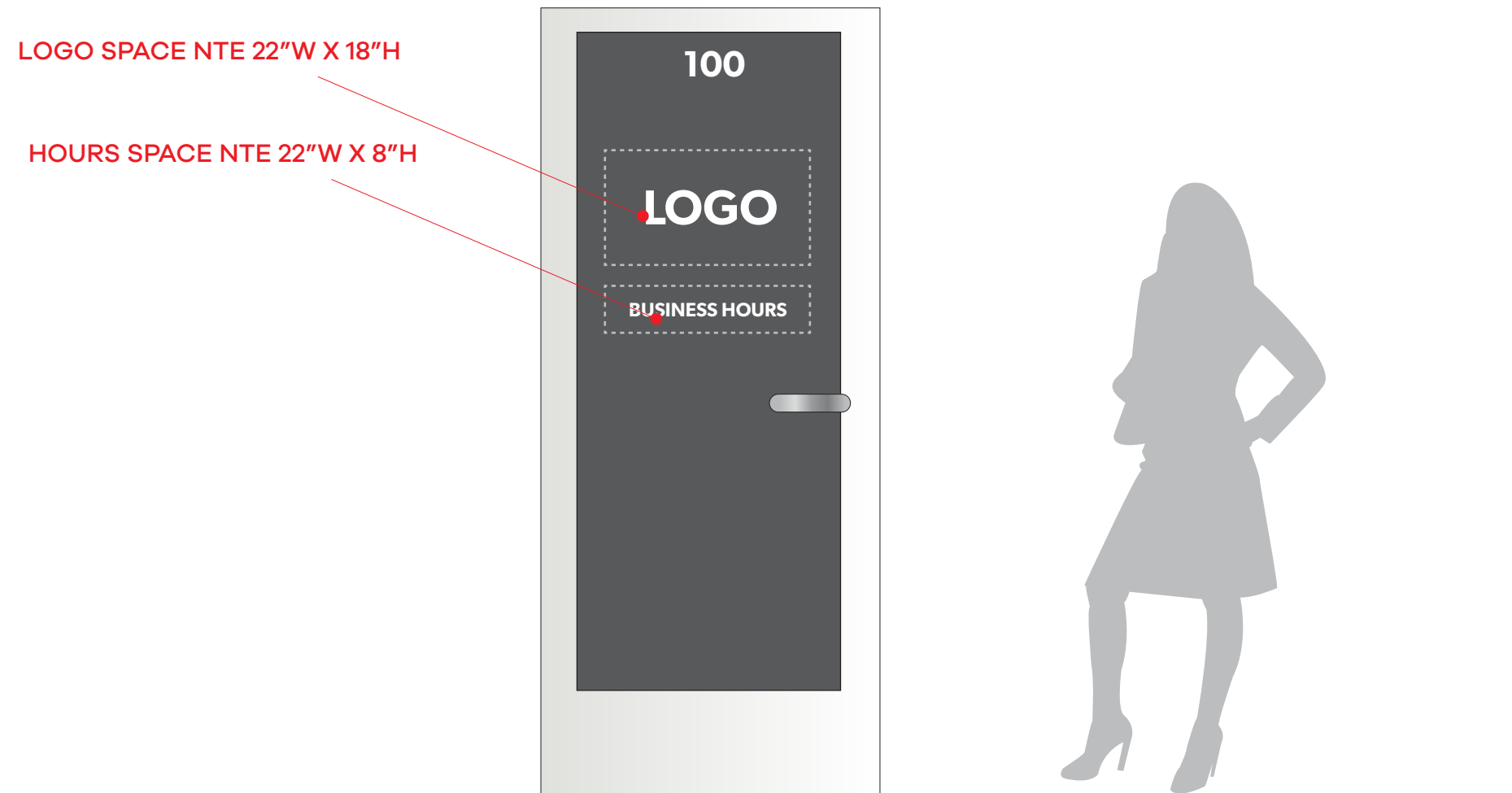
# C

## TENANT VINYL FRONT ELEVATIONS

### FABRICATE AND INSTALL DOOR SIGNS TO SPECIFICATIONS

FONT: GIBSON SEMIBOLD

- FIRST SURFACE WHITE OPAQUE VINYL
- SUITE NUMBERS TO BE 3" TALL



SINGLE DOOR SCENARIO

Client's Approval:	Landlord's Approval:	Job #: 2877	Project Start Date: 03/03/21
Date:	Date:	Artist: <i>Juan</i>	Rev. #1: 03/03/21   Page: 5 of 5