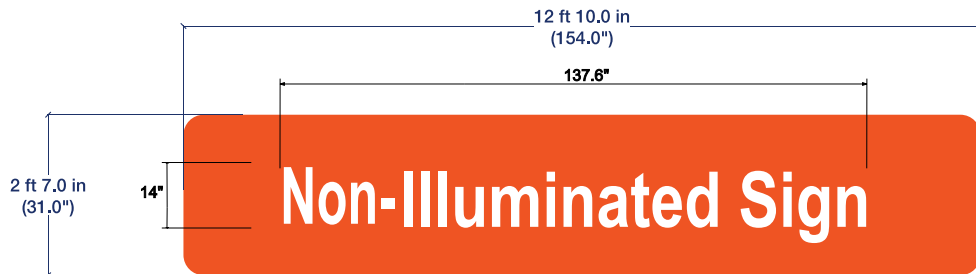


Sign A
33.2 SF



14" max channel letter height - 137.6" max channel letter sign length

Sign standards not included within the Coordinated Sign Plan default to the City's current sign code and standards

All Colors TBD-Noted colors for reference only

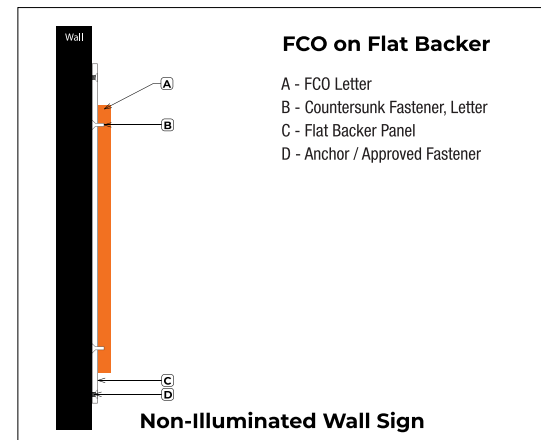
Specifications:
FCO on Backer Panel

- (x1) FCOs on Backer Panel
- 1/2" White acrylic
- 1/8" Aluminum backer painted PS Orange
- Mounted using countersunk screws

Material	1/2" White Acrylic - 1/8" ACM
Depth	5/8" Overall
LEDs	N/A
Mounting	Face Screw

Color Chart

Color A		Public Storage Orange



Site Address:
13207 Bois-D-Arc Rd
Manor, TX 78653

Client Approval

Project: Public Storage Manor TX
SO#: #####

Date: 04/29/2026
Revisions:

The intent of this drawing is to show a conceptual representation of the proposed signage, due to variations in printing, fabrication, painting, substrates, and finishes. The final product may differ from drawing. Superimposed drawings are intended to show orientation and location of the proposed signage. It may not be exactly to scale. Color swatches or chips can be provided if requested by customer. If colors are not specified a close match will be provided and determined by the project manager. Accepted: By signing this document you the customer accepts that the above proposed signage specifications, colors, spelling, and conditions are satisfactory and authorize Elevate Sign Group to do the work as specified.
Copyright 2021, by Comet Neon, Inc. All designs presented are the sole property of Elevate Sign Group, LTD and may not be reproduced in part or whole without written permission from Elevate Sign Group, Ltd.

Project Manager:
Jack White
Designer:
Lauren H.

R1 -
R2 -



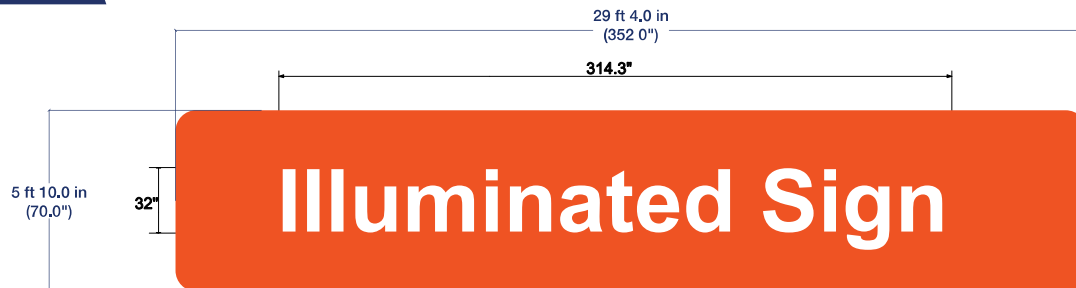
1120 N Ridge Ave, Lombard IL 60148
630-656-1085 Elevatesigngroup.com

Sign B, D - Detail (1/4" = 1')

Sign standards not included within the Coordinated Sign Plan default to the City's current sign code and standards

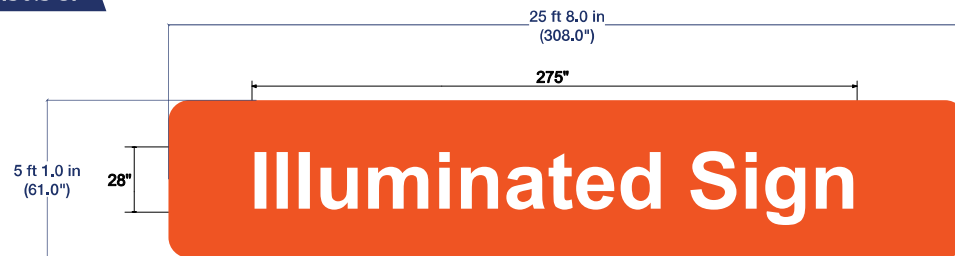
All Colors TBD-Noted colors for reference only

**Sign B
171.2 SF**



32" max channel letter height - 314.3" max channel letter sign length

**Sign D
130.5 SF**



28" max channel letter height - 275" max channel letter sign length

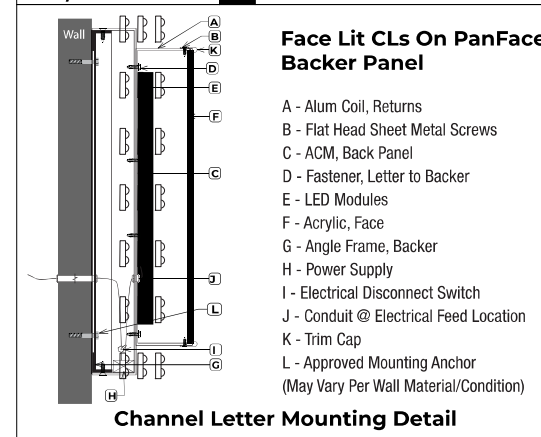
**Specifications:
Channel Letters on Backer Panel**

- (x2) Internally Illuminated Channel Letters on Panface Backer Panel
- 1" Black trim cap
- 5" Black returns
- White acrylic faces
- 2" Deep backer panel painted Public Storage Orange

Face Material	3/16" White Acrylic
Trim Cap Color	Black
Trim Cap Size	1"
Return Color	Black
Return Depth	5"
LEDs	Standard White
Mounting	Approved Mounting Anchor

Color Chart

Backer	Public Storage Orange
Faces	White
Trim>Returns	Black



Site Address:
13207 Bois-D-Arc Rd
Manor, TX 78653

Client Approval

Project: Public Storage Manor TX
SO#: #####

Date: 04/29/2026
Revisions:

The intent of this drawing is to show a conceptual representation of the proposed signage, due to variations in printing, fabrication, painting, substrates, and finishes. The final product may differ from drawing. Superimposed drawings are intended to show orientation and location of the proposed signage. It may not be exactly to scale. Color swatches or chips can be provided if requested by customer. If colors are not specified a close match will be provided and determined by the project manager. Accepted: By signing this document you the customer accepts that the above proposed signage specifications, colors, spelling, and conditions are satisfactory and authorize Elevate Sign Group to do the work as specified.
Copyright 2021, by Comet Neon, Inc. All designs presented are the sole property of Elevate Sign Group, LTD and may not be reproduced in part or whole without written permission from Elevate Sign Group, Ltd.

Project Manager:
Jack White
Designer:
Lauren H.

R1 -
R2 -



1120 N Ridge Ave, Lombard IL 60148
630-656-1085 Elevatesigngroup.com

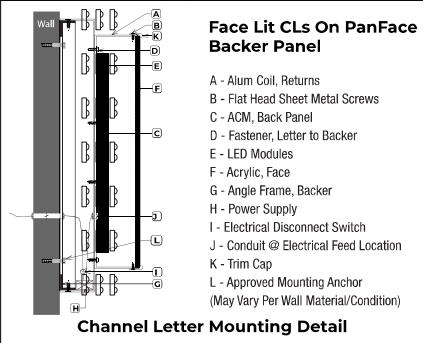
Specifications:
Channel Letters on Backer Panel

- (x2) Internally Illuminated Channel Letters on PanFace Backer Panel
- 1" Black trim cap
- 5" Black returns
- White acrylic faces
- 2" Deep backer panel painted Public Storage Orange

Face Material	3/16" White Acrylic
Trim Cap Color	Black
Trim Cap Size	1"
Return Color	Black
Return Depth	5"
LEDs	Standard White
Mounting	Approved Mounting Anchor

Color Chart

Backer	Public Storage Orange
Faces	White
Trim/Returns	Black



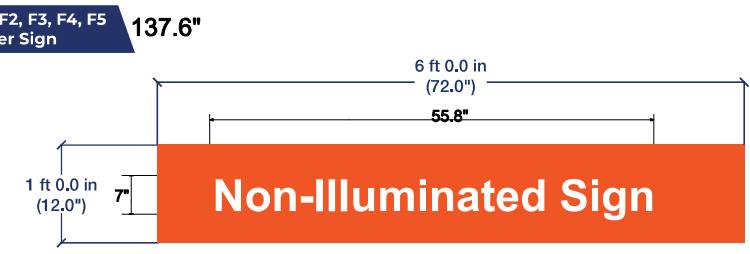
Sign E. F1-F5 - Detail (1" = 1')

Sign E
6.0 SF



7" max channel letter height - 55.8" max channel letter sign length

Sign F1, F2, F3, F4, F5
6.0 SF Per Sign



7" max channel letter height - 55.8" max channel letter sign length

Sign standards not included within the Coordinated Sign Plan default to the City's current sign code and standards
 All Colors TBD-Noted colors for reference only

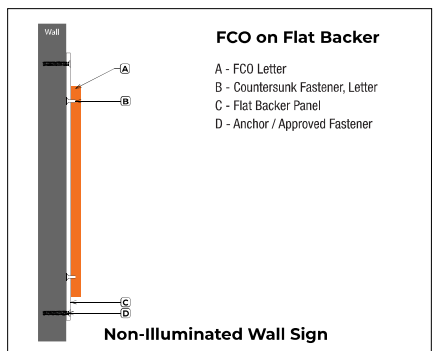
Specifications:
FCO on Backer Panel

- (x1) FCOs on Backer Panel
- 1/2" White acrylic with reflective vinyl applied to face
- 1/8" Aluminum backer painted PS Orange
- Mounted using countersunk screws

Material	1/2" White Acrylic - 1/8" ACM
Depth	5/8" Overall
LEDs	N/A
Mounting	Face Screw

Color Chart

Color A	Public Storage Orange
Color B	3M Reflective Vinyl



1120 N Ridge Ave, Lombard IL 60148
 630-656-1085 Elevatesigngroup.com

Site Address:
 13207 Bois-D-Arc Rd
 Manor, TX 78653

Client Approval

Project: Public Storage Manor TX
SO#: #####

Date: 04/29/2026
Revisions:
 R1 -
 R2 -

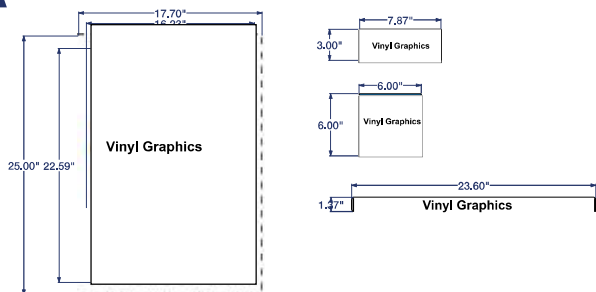
Project Manager: Jack White
Designer: Lauren H.

The intent of this drawing is to show a conceptual representation of the proposed signage, due to variations in printing, fabrication, painting, substrates, and finishes. The final product may differ from drawing. Superimposed drawings are intended to show orientation and location of the proposed signage. It may not be exactly to scale. Color swatches or chips can be provided if requested by customer. If colors are not specified a close match will be provided and determined by the project manager. Accepted: By signing this document you the customer accepts that the above proposed signage specifications, colors, spelling, and conditions are satisfactory and authorize Elevate Sign Group to do the work as specified. Copyright 2021, by Comet Neon, Inc. All designs presented are the sole property of Elevate Sign Group, LTD and may not be reproduced in part or whole without written permission from Elevate Sign Group, Ltd.

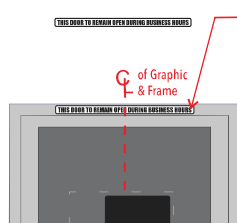
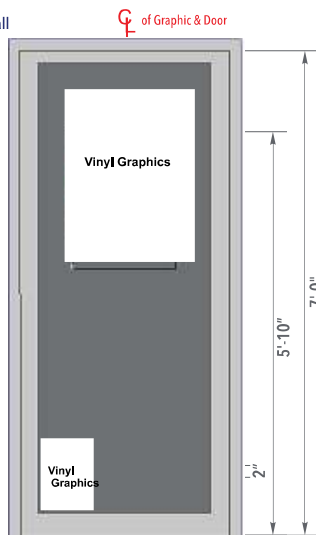
1120 N Ridge Ave, Lombard IL 60148
 630-656-1085 Elevatesigngroup.com

Sign G - Detail (1/2" = 1')

Sign G 4 SF



Single Door Install



REAR ELEVATION
SCALE: 1/2" = 1'-0"

NOTE: DOOR OPEN DECAL TO BE INSTALLED ON INSIDE OF ENTRY DOORWAY ABOVE DOOR ON FRAME (NOT ON DOOR)

Sign standards not included within the Coordinated Sign Plan default to the City's current sign code and standards

All Colors TBD-Noted colors for reference only

Specifications: Door Vinyl

Door Vinyl
-Digital print on clear media

Material	Clear/Opaque Print Media
Depth	N/A
LEDs	N/A
Mounting	First Surface

Color Chart

Color A	Digital Print

Site Address:

13207 Bois-D-Arc Rd
Manor, TX 78653

Client Approval

Project: Public Storage Manor TX

SO#: #####

Date:

04/29/2026

Revisions:

R1 -
R2 -

Project Manager:

Jack White

Designer:

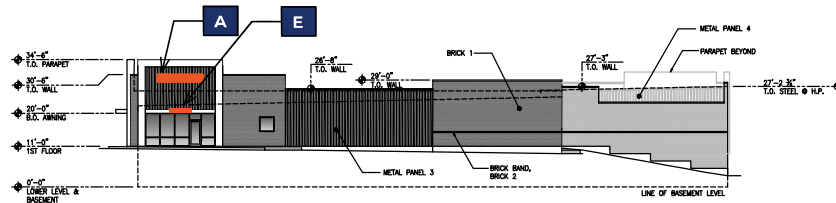
Lauren H.



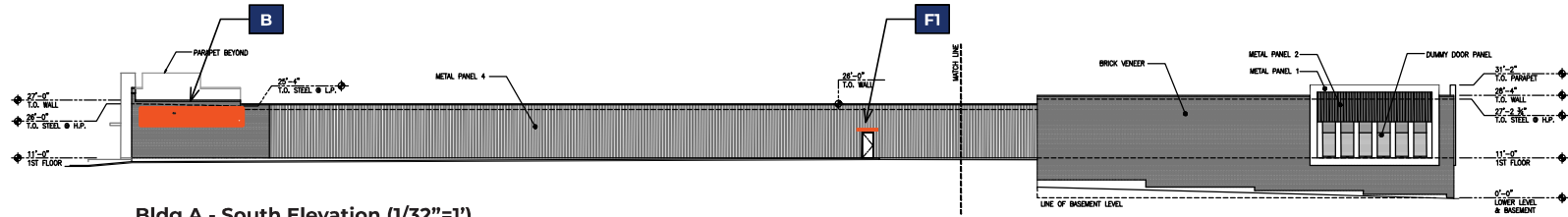
1120 N Ridge Ave, Lombard IL 60148
630-656-1085 Elevatesigngroup.com

The intent of this drawing is to show a conceptual representation of the proposed signage, due to variations in printing, fabrication, painting, substrates, and finishes. The final product may differ from drawing. Superimposed drawings are intended to show orientation and location of the proposed signage. It may not be exactly to scale. Color swatches or chips can be provided if requested by customer. If colors are not specified a close match will be provided and determined by the project manager. Accepted: By signing this document you the customer accepts that the above proposed signage specifications, colors, spelling, and conditions are satisfactory and authorize Elevate Sign Group to do the work as specified.
Copyright 2021, by Comet Neon, Inc. All designs presented are the sole property of Elevate Sign Group, LTD and may not be reproduced in part or whole without written permission from Elevate Sign Group, Ltd.

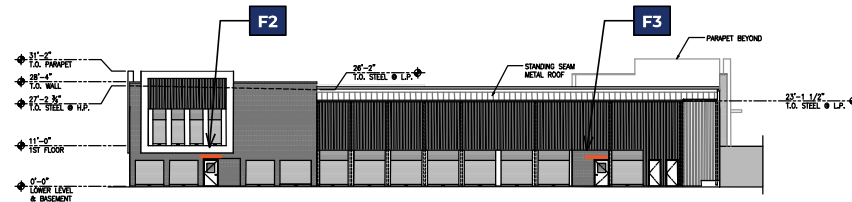
Sign A, B, E, F1-F3 - Elevation Mockup



Bldg A - West Elevation (1/32"=1')



Bldg A - South Elevation (1/32"=1')



Bldg A - East Elevation (1/32"=1')

Site Address:
13207 Bois-D-Arc Rd
Manor, TX 78653

Client Approval

Project: Public Storage Manor TX

SO#: #####

Date: 04/29/2026
Revisions:
R1 -
R2 -

Project Manager:

Jack White

Designer:

Lauren H.

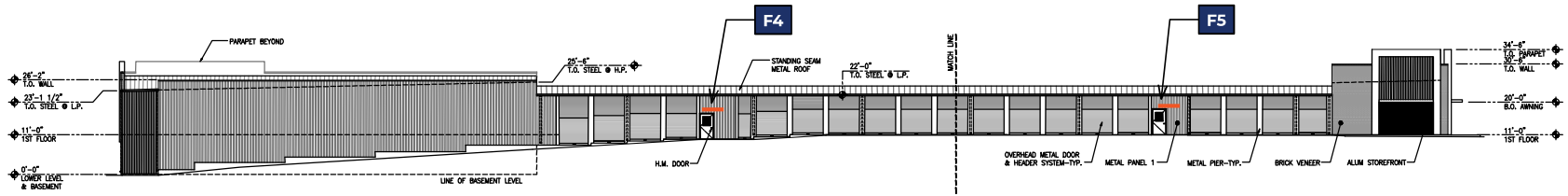
The intent of this drawing is to show a conceptual representation of the proposed signage, due to variations in printing, fabrication, painting, substrates, and finishes. The final product may differ from drawing. Superimposed drawings are intended to show orientation and location of the proposed signage. It may not be exactly to scale. Color swatches or chips can be provided if requested by customer. If colors are not specified a close match will be provided and determined by the project manager. Accepted: By signing this document you the customer accepts that the above proposed signage specifications, colors, spelling, and conditions are satisfactory and authorize Elevate Sign Group to do the work as specified.
Copyright 2021, by Comet Neon, Inc. All designs presented are the sole property of Elevate Sign Group, LTD and may not be reproduced in part or whole without written permission from Elevate Sign Group, Ltd.



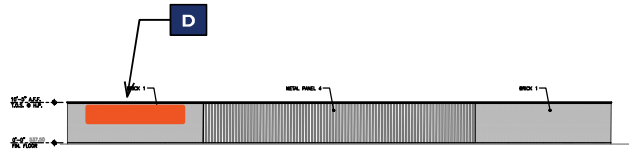
Elevate
Sign Group

1120 N Ridge Ave, Lombard IL 60148
630-656-1085 Elevatesigngroup.com

Sign D, F4, F5 - Elevation Mockup



Bldg A - North Elevation (1/32"=1')



Bldg D - East Elevation (1/32"=1')

Sign standards not included within the Coordinated Sign Plan default to the City's current sign code and standards

All Colors TBD-Noted colors for reference only

Site Address:
13207 Bois-D-Arc Rd
Manor, TX 78653

Client Approval

Project: Public Storage Manor TX
SO#: #####

Date: 04/29/2026
Revisions:
R1 -
R2 -

Project Manager: Jack White
Designer: Lauren H.

The intent of this drawing is to show a conceptual representation of the proposed signage, due to variations in printing, fabrication, painting, substrates, and finishes. The final product may differ from drawing. Superimposed drawings are intended to show orientation and location of the proposed signage. It may not be exactly to scale. Color swatches or chips can be provided if requested by customer. If colors are not specified a close match will be provided and determined by the project manager. Accepted: By signing this document you the customer accepts that the above proposed signage specifications, colors, spelling, and conditions are satisfactory and authorize Elevate Sign Group to do the work as specified.
Copyright 2021, by Comet Neon, Inc. All designs presented are the sole property of Elevate Sign Group, LTD and may not be reproduced in part or whole without written permission from Elevate Sign Group, Ltd.



Elevate
Sign Group

1120 N Ridge Ave, Lombard IL 60148
630-656-1085 Elevatesigngroup.com

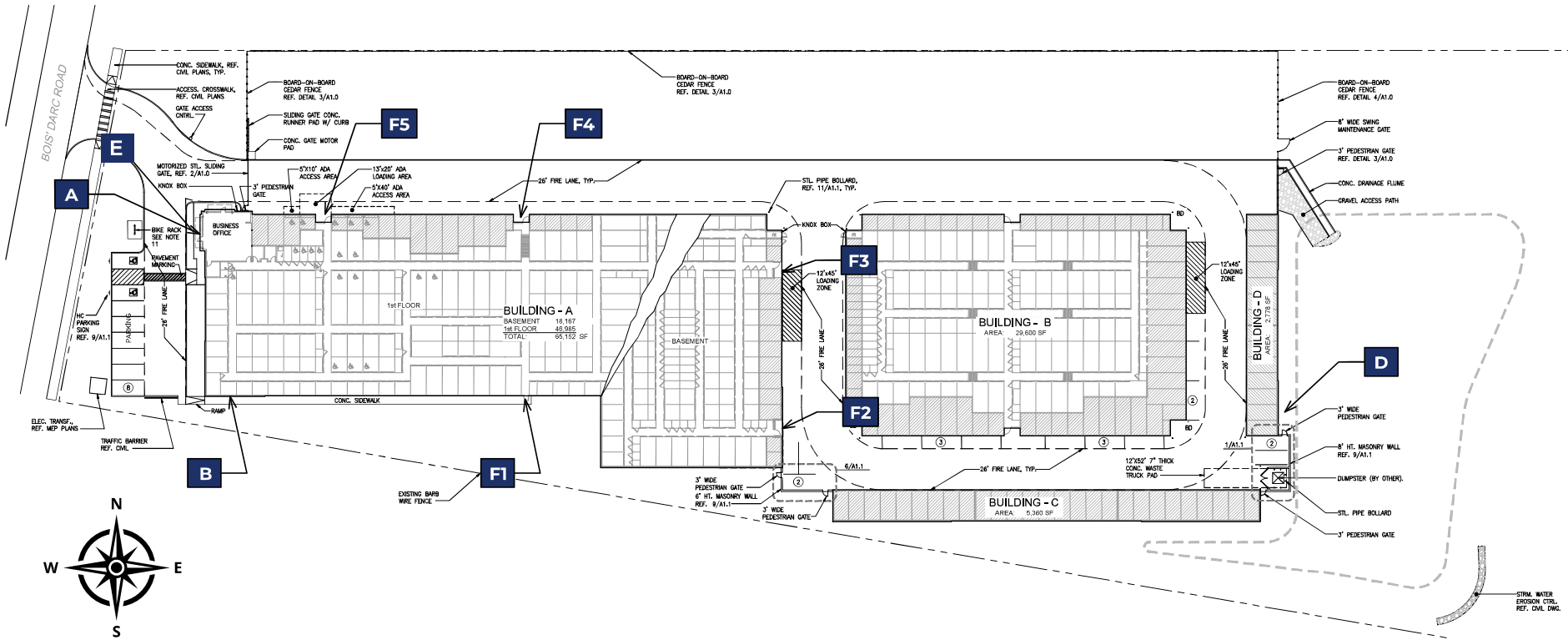
Site Map (NTS)

Sign standards not included within the Coordinated Sign Plan default to the City's current sign code and standards

All Colors TBD-Noted colors for reference only

Legend

Sign A	FCO on Backer
Sign B	Channel Letters on Backer
Sign D	Channel Letters on Backer
Sign E	FCO on Backer
Sign F1-F5	FCO on Backer
Sign G	Door Vinyl



Site Address:
13207 Bois-D-Arc Rd
Manor, TX 78653

Client Approval

Project: Public Storage Manor TX
SO#: #####

Date: 04/29/2026
Revisions:
R1 -
R2 -

Project Manager: Jack White
Designer: Lauren H.



1120 N Ridge Ave, Lombard IL 60148
630-656-1085 Elevatesigngroup.com

The intent of this drawing is to show a conceptual representation of the proposed signage, due to variations in printing, fabrication, painting, substrates, and finishes. The final product may differ from drawing. Superimposed drawings are intended to show orientation and location of the proposed signage. It may not be exactly to scale. Color swatches or chips can be provided if requested by customer. If colors are not specified a close match will be provided and determined by the project manager. Accepted: By signing this document you the customer accepts that the above proposed signage specifications, colors, spelling, and conditions are satisfactory and authorize Elevate Sign Group to do the work as specified.
Copyright 2021, by Comet Neon, Inc. All designs presented are the sole property of Elevate Sign Group, LTD and may not be reproduced in part or whole without written permission from Elevate Sign Group, Ltd.