



1500 County Road 269
Leander, TX 78641

Mailing Address:
9601 Amberglen Blvd. #109
Austin, TX 78729

CHANGE ORDER

ORDER NO.: 3
DATE: 4/17/2024
AGREEMENT DATE: 2/15/2023

NAME OF PROJECT: Bell Farms and Presidential Glen Lift Station Expansion
OWNER: City of Manor

CONTRACTOR: JM Pipeline, LLC

The following changes are hereby made to the CONTRACT DOCUMENTS:

1. Justification:

Item No. 1– Add 1 LS Change Order Item C.O. 3.-1, Adjust and center the surge relief valve piping to the surge relief valve at the Bell Farms Lift Station @ \$13,169.42/LS = \$13,169.42

Item No.2 - Add 1 LS Change Order Item C.O. 3.-2, Installation of grade ring adjustments for the new wet well at the Presidential Glen Lift Station to bring it to top of the grade @ \$6,641.76/LS = \$6,641.76

2. Change to CONTRACT PRICE:


Original CONTRACT PRICE: \$1,731,127.00
Current CONTRACT PRICE adjusted by previous CHANGE ORDER \$1,976,503.38.
The CONTRACT PRICE due to this CHANGE ORDER will be **INCREASED** by: \$19,811.18.
The new CONTRACT PRICE including this CHANGE ORDER will be: \$1,996,314.56.

3. There will be a change to the CONTRACT TIME:

An increase of 52 calendar days to the contract time.

4. Approvals Required:

To be effective, this order must be signed by all parties to the Agreement if it changes the scope or objective of the PROJECT, or as may otherwise be required by the SUPPLEMENTAL GENERAL CONDITIONS.

Recommended by: Rebecca Howley, P.E. Signed: 
Engineer

Ordered by: _____ Signed: _____
Owner City of Manor

Accepted by: _____ Signed: _____

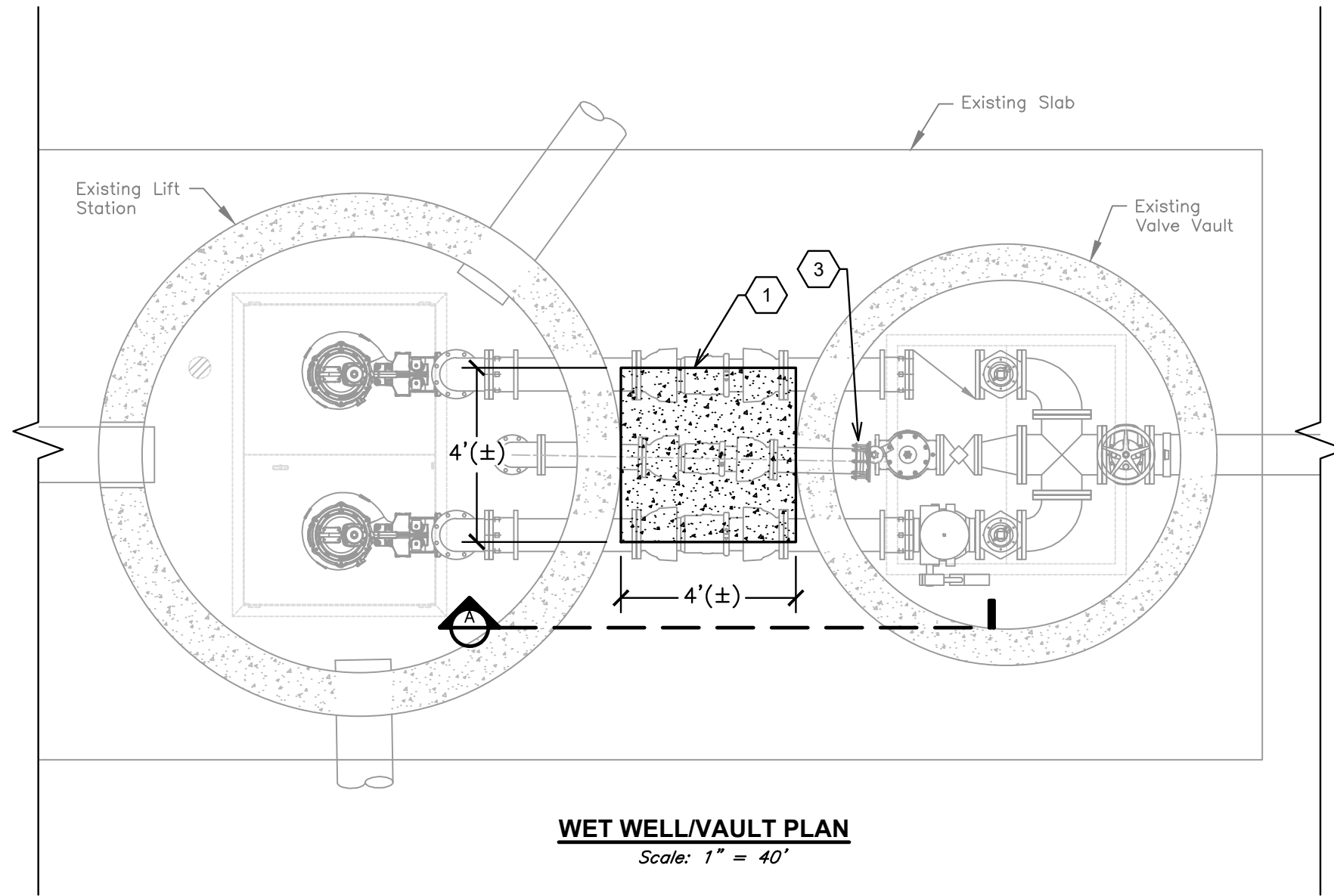
CO REQUEST, INSTALL GRADE RINGS WITH RING AND COVER ON THE NEW WET WELL, BELL FARMS LIFT STATION

MATERIAL					\$	1,127.90
MISCELLANEOUS MATERIAL/ CONSUMABLES (20% OF MATERIAL)					\$	225.58
CARTAGE					\$	-
SALES TAX					\$	-
TOTAL MATERIAL					\$	1,353.48
LABOR COST HOURLY	\$ 43.25	HOURS	8	LABOR SUBTOTAL	\$	346.00
LABOR COST OVERTIME HOURLY	\$ 64.88	HOURS	2	OVERTIME SUBTOTAL	\$	129.76
LABOR COST HOURLY	\$ 28.00	HOURS	8	LABOR SUBTOTAL	\$	224.00
LABOR COST OVERTIME HOURLY	\$ 42.00	HOURS	2	OVERTIME SUBTOTAL	\$	84.00
LABOR COST HOURLY	\$ 27.00	HOURS	8	LABOR SUBTOTAL	\$	216.00
LABOR COST OVERTIME HOURLY	\$ 40.50	HOURS	2	OVERTIME SUBTOTAL	\$	81.00
LABOR COST HOURLY	\$ 17.00	HOURS	8	LABOR SUBTOTAL	\$	136.00
LABOR COST OVERTIME HOURLY	\$ 25.50	HOURS	2	OVERTIME SUBTOTAL	\$	51.00
SUPERVISION (35% OF LABOR)					\$	349.92
PROJECT MANAGEMENT (10% OF LABOR)					\$	99.98
PROJECT CLERK (5% OF LABOR)					\$	49.99
PAYROLL TAX AND INSURANCE AT 55%					\$	972.20
TOTAL LABOR					\$	2,739.84
SAFETY (2% OF LABOR)					\$	54.80
CLEAN UP (5% OF LABOR)					\$	136.99
WARRANTY (3% OF LABOR)					\$	82.20
PER DIEM	\$ 45.00	PER DAY	0	NUMBER OF DAYS	\$	-
OVERNIGHT STAY	\$ 68.00	PER DAY	0	NUMBER OF DAYS	\$	-
PERMIT FEES					\$	-
ENGINEERING FEES					\$	-
FUEL	\$ 3.50	PER GAL	25	NUMBER OF GALLONS	\$	87.50
EQUIPMENT	\$ 945.00	PER DAY	1	NUMBER OF DAYS	\$	945.00
SCAFFOLDING/ SHORING	\$ 200.00	PER DAY	0	NUMBER OF DAYS	\$	-
JOBSITE OFFICE	\$ 94.00	PER DAY	0	NUMBER OF DAYS	\$	-
JOB TRUCK	\$ 70.00	PER DAY	0	NUMBER OF DAYS	\$	-
TOTAL JOB EXPENSES					\$	1,306.48
COST TOTAL					\$	5,399.81
OVERHEAD					\$	539.98
PROFIT					\$	539.98
SUBCONTRACTOR					\$	-
OVERHEAD					\$	-
PROFIT					\$	-
BOND					\$	161.99
WORK CHANGE SUMMARY TOTAL					\$	6,641.76

CO REQUEST TO MODIFY SURGE RELIEF PIPING TO ALIGN AND BOLT UP TO NEW VALVE

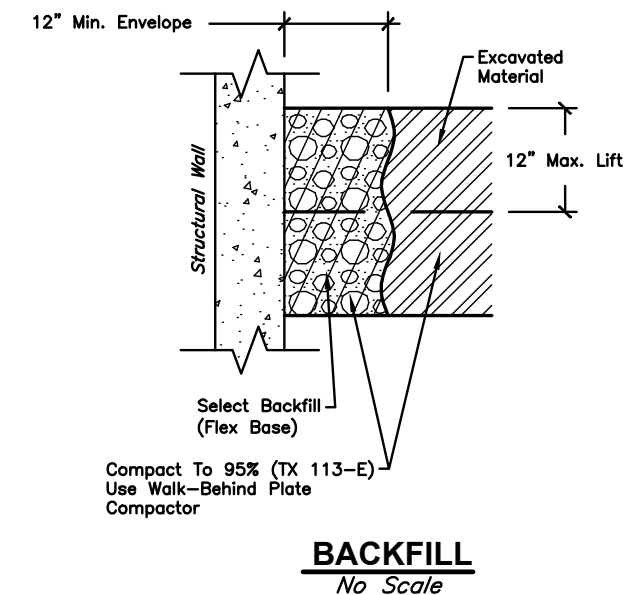
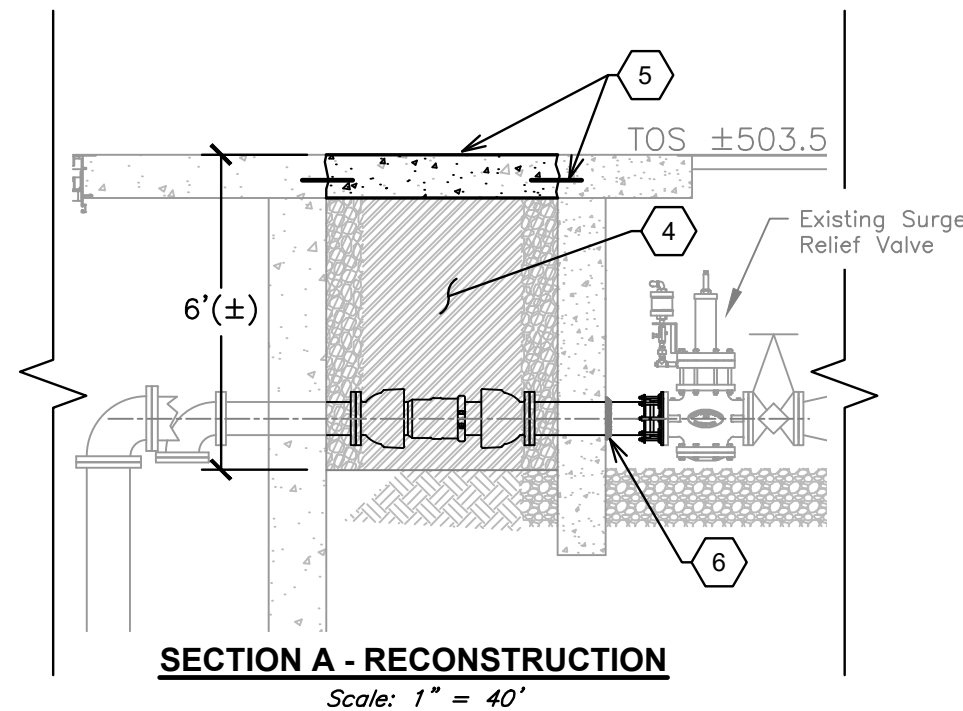
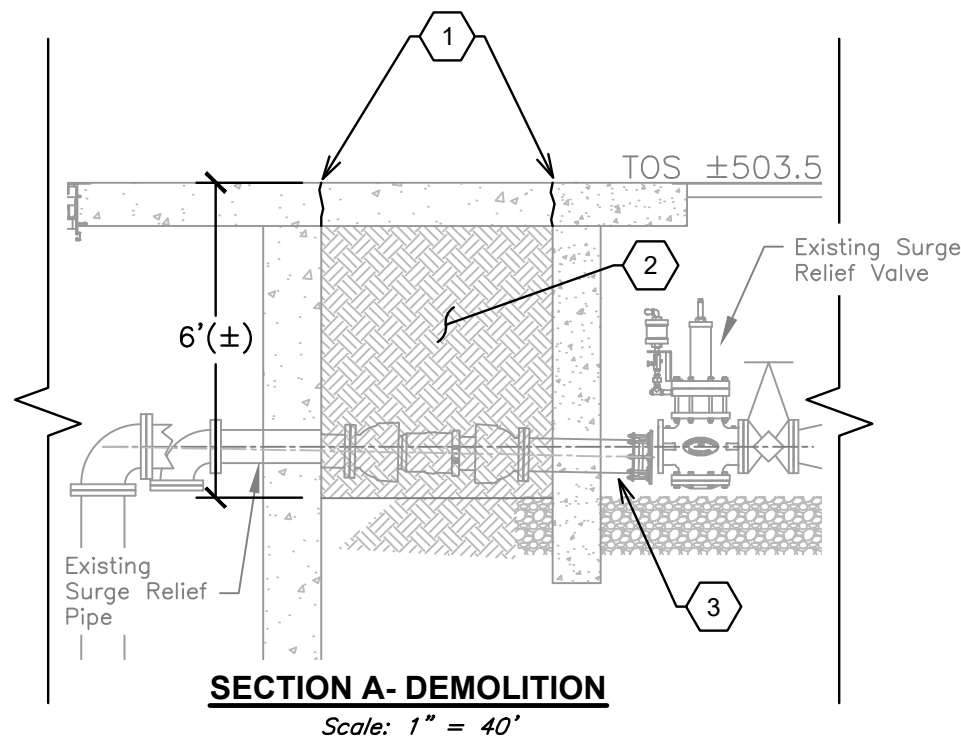
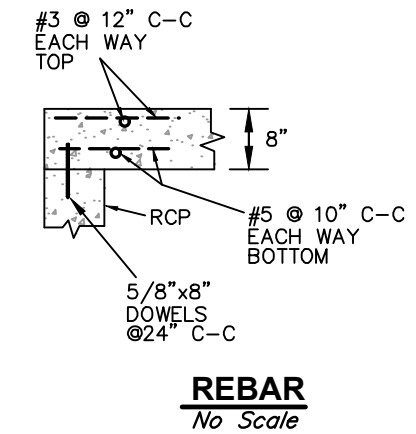
MATERIAL					\$	741.97
MISCELLANEOUS MATERIAL/ CONSUMABLES (20% OF MATERIAL)					\$	148.39
CARTAGE					\$	-
SALES TAX					\$	-
TOTAL MATERIAL					\$	890.36
LABOR COST HOURLY	\$ 43.25	HOURS	24	LABOR SUBTOTAL	\$	1,038.00
LABOR COST OVERTIME HOURLY	\$ 64.88	HOURS	6	OVERTIME SUBTOTAL	\$	389.28
LABOR COST HOURLY	\$ 28.00	HOURS	24	LABOR SUBTOTAL	\$	672.00
LABOR COST OVERTIME HOURLY	\$ 42.00	HOURS	6	OVERTIME SUBTOTAL	\$	252.00
LABOR COST HOURLY	\$ 27.00	HOURS	24	LABOR SUBTOTAL	\$	648.00
LABOR COST OVERTIME HOURLY	\$ 40.50	HOURS	6	OVERTIME SUBTOTAL	\$	243.00
LABOR COST HOURLY	\$ 17.00	HOURS	24	LABOR SUBTOTAL	\$	408.00
LABOR COST OVERTIME HOURLY	\$ 25.50	HOURS	6	OVERTIME SUBTOTAL	\$	153.00
SUPERVISION (35% OF LABOR)					\$	1,049.75
PROJECT MANAGEMENT (10% OF LABOR)					\$	299.93
PROJECT CLERK (5% OF LABOR)					\$	149.96
PAYROLL TAX AND INSURANCE AT 55%					\$	2,916.61
TOTAL LABOR					\$	8,219.53
SAFETY (2% OF LABOR)					\$	164.39
CLEAN UP (5% OF LABOR)					\$	410.98
WARRANTY (3% OF LABOR)					\$	246.59
PER DIEM	\$ 45.00	PER DAY	0	NUMBER OF DAYS	\$	-
OVERNIGHT STAY	\$ 68.00	PER DAY	0	NUMBER OF DAYS	\$	-
PERMIT FEES					\$	-
ENGINEERING FEES					\$	-
FUEL	\$ 3.50	PER GAL	10	NUMBER OF GALLONS	\$	35.00
EQUIPMENT	\$ 945.00	PER DAY	0	NUMBER OF DAYS	\$	740.00
SCAFFOLDING/ SHORING	\$ 200.00	PER DAY	0	NUMBER OF DAYS	\$	-
JOBSITE OFFICE	\$ 94.00	PER DAY	0	NUMBER OF DAYS	\$	-
JOB TRUCK	\$ 70.00	PER DAY	0	NUMBER OF DAYS	\$	-
TOTAL JOB EXPENSES					\$	1,596.95
COST TOTAL					\$	10,706.84
OVERHEAD					\$	1,070.68
PROFIT					\$	1,070.68
SUBCONTRACTOR					\$	-
OVERHEAD					\$	-
PROFIT					\$	-
BOND					\$	321.21
WORK CHANGE SUMMARY TOTAL					\$	13,169.42

G:\15110.02\Civil 3D\Production Drawings\Exhibits\15110.02X2603 Bell Farms Surge Relief Adjustment.dwg Layout: Layout1 -- Friday March 22, 2024, 8:10am -- Copyright 2024, George Butler Associates, Inc.



KEYNOTES:

1. SAWCUT THE SLAB
2. EXCAVATE AND REMOVE MATERIAL TO THE SURGE RELIEF VALVE PIPING.
3. CONTRACTOR TO ADJUST THE SURGE RELIEF PIPING TO BE CENTERED WITH THE SURGE RELIEF VALVE AND ALLOW CONNECTION.
4. BACKFILL WITH FLOWABLE FILL.
5. DOWELL IN TO MATCH WHAT WAS EXISTING, TIE REBAR, AND POUR CONCRETE TO MATCH THE EXISTING SLAB.
6. PATCH UP THE CHIPPED CONCRETE AROUND THE SURGERELIEF VALVE PIPING



Leander Office
County Road 289
Leander, TX 78641
512.259.3882

Austin Office
9601 Amberglenn #109
Austin, TX 78729
737.247.7500
gbateam.co

Texas Eng. Firm #4242

**BELL FARMS LIFT STATION
SURGE RELIEF VALVE
PIPE RE-ADJUSTMENT**

PROJECT NUMBER

15110.02

DATE

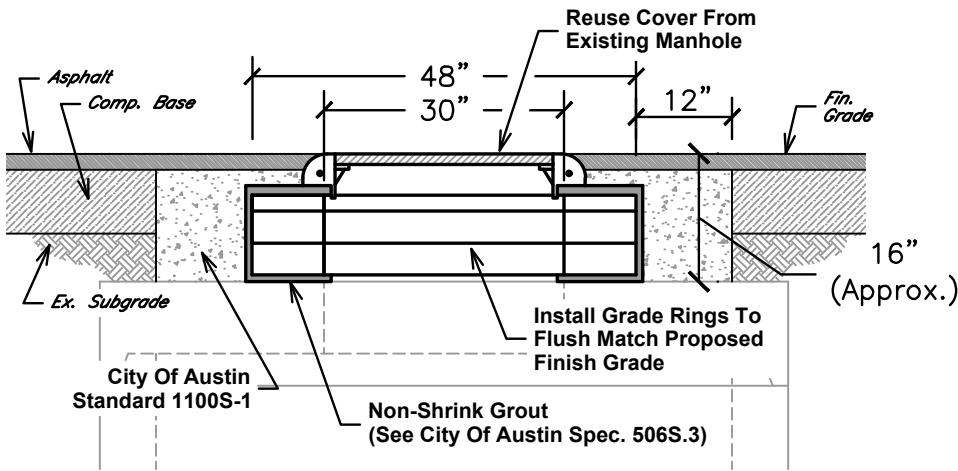
2024/03/19

SHEET NUMBER

Exhibit
"A"

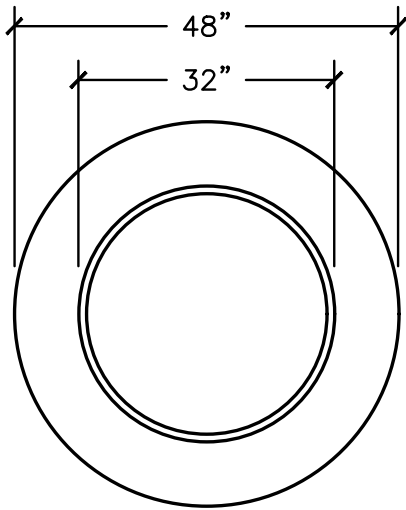
NOTES:

1. DIMENSIONS WILL NEED TO BE FIELD VERIFIED BY CONTRACTOR.
2. CONTRACTOR TO NOTIFY ENGINEER OF ANY NECESSARY ADJUSTMENTS NEEDED FOR CONSTRUCTION.
3. REFER TO CITY OF MANOR STANDARD DETAIL WW-03.

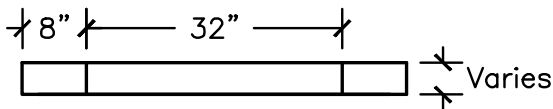


SECTION A

SCALE: 1/2" = 1'-0"



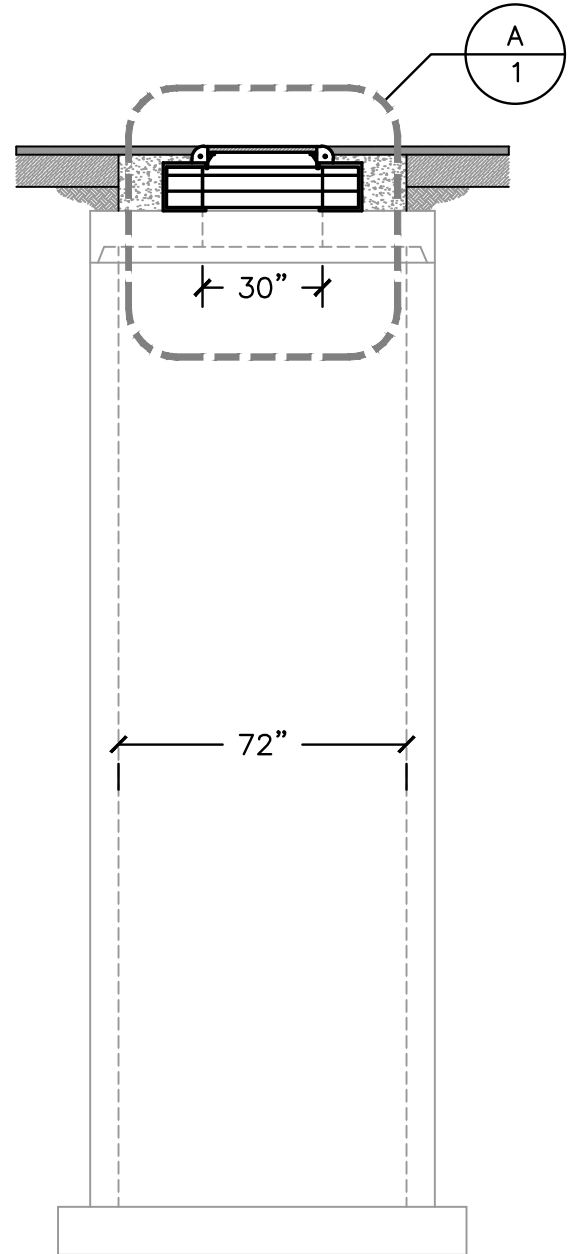
GRADE RING - PLAN



GRADE RING - ELEVATION

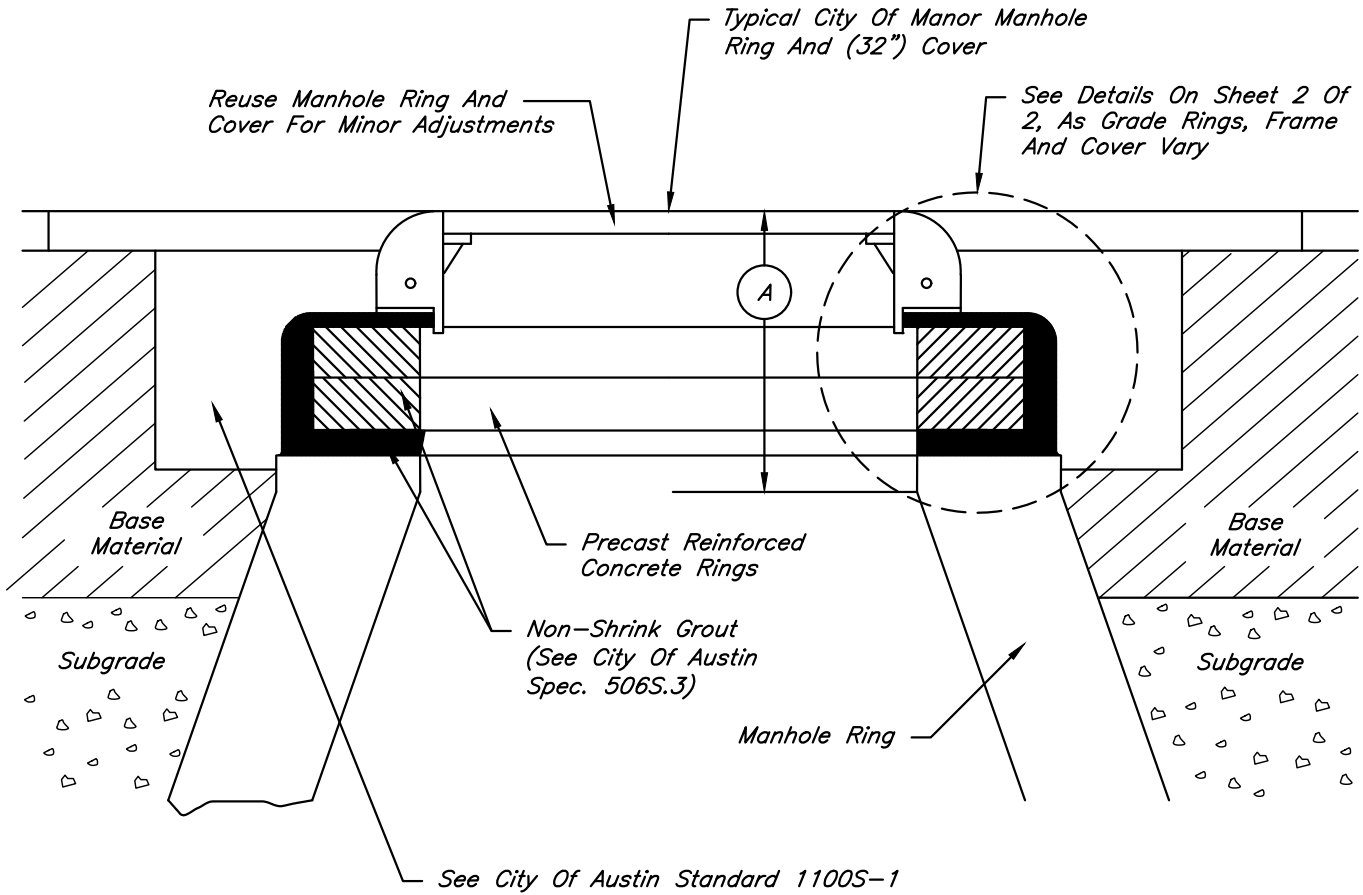
MANHOLE GRADE RING

SCALE: 1/2" = 1'-0"



EXISTING MANHOLE

SCALE: 1/4" = 1'-0"



- Ⓐ Vertical Face = Allowable Throat Or Chimney Height
 = New Construction = 21" Max.
 = Existing Construction = 27" Max.

Notes:

1. Non-shrink Grout Shall Not Exceed 1" In Any Dimension.
2. Sub-grade And Base Materials Shall Be Compacted According To Items 201S And 210S, Respectively, Of The City Of Austin Standard Specifications.
3. Refer To City of Austin Standard 1100S-1 For Repairs Around Manholes.

Pauline M. Gray

Approved

09/29/2023

Date

CITY OF MANOR

MINOR MANHOLE ADJUSTMENT

& NEW MANHOLE CONSTRUCTION

CONSTRUCTION STANDARD DETAILS

Detail No. WW-03 (1 of 2)

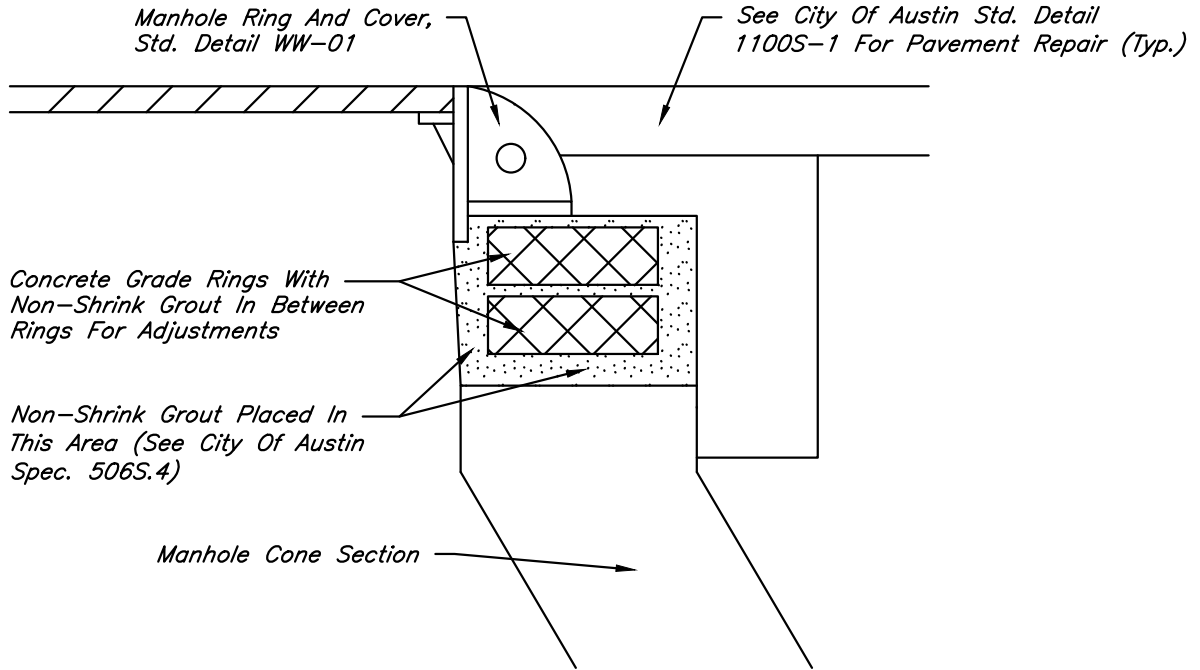
WW-03.dwg



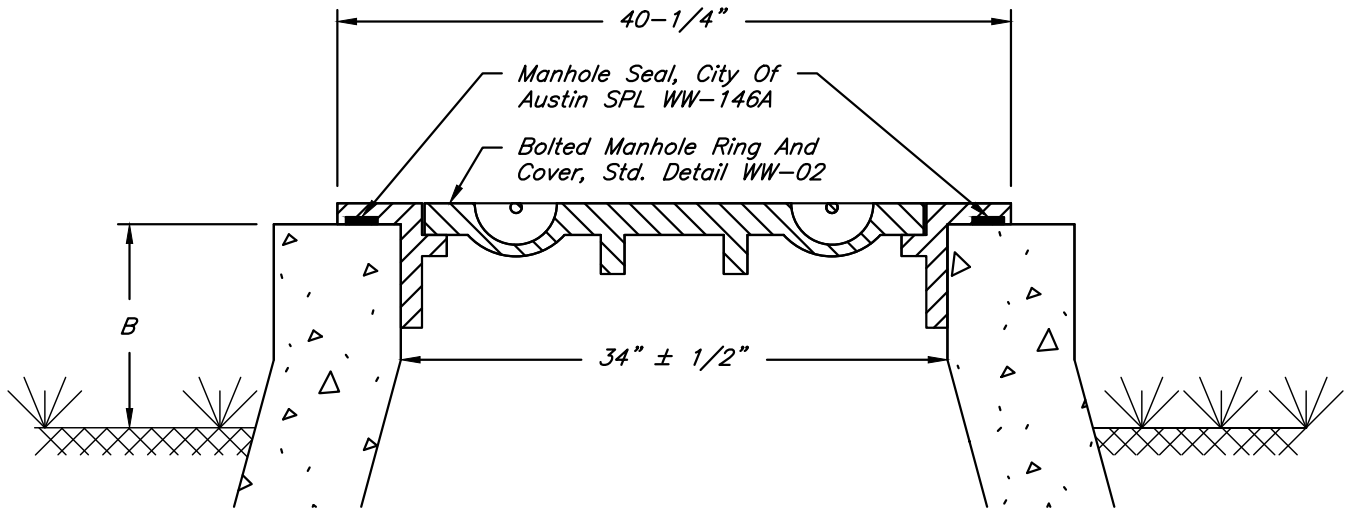
**CITY OF
 MANOR**
 EST. 1872
 TEXAS

THE ARCHITECT/ENGINEER ASSUMES
 RESPONSIBILITY FOR THE APPROPRIATE
 USE OF THIS DETAIL. (NOT TO SCALE)

INSIDE PAVEMENT DETAIL



OUTSIDE PAVEMENT DETAIL



Notes:

1. For Use In Unpaved Areas Only
2. When Used Within 100-year Floodplain, See Std. Detail WW-05 For Additional M.H. Requirements.
3. Dimension B=6"-12" For M.H. Located In 100-yr Flood Plan; B=2"-12" For M.H. Outside 100-yr Flood Plan.

Paulina M. Gray

Approved

09/29/2023

Date

CITY OF MANOR

MINOR MANHOLE ADJUSTMENT

& NEW MANHOLE CONSTRUCTION

CONSTRUCTION STANDARD DETAILS

Detail No. WW-03 (2 of 2)

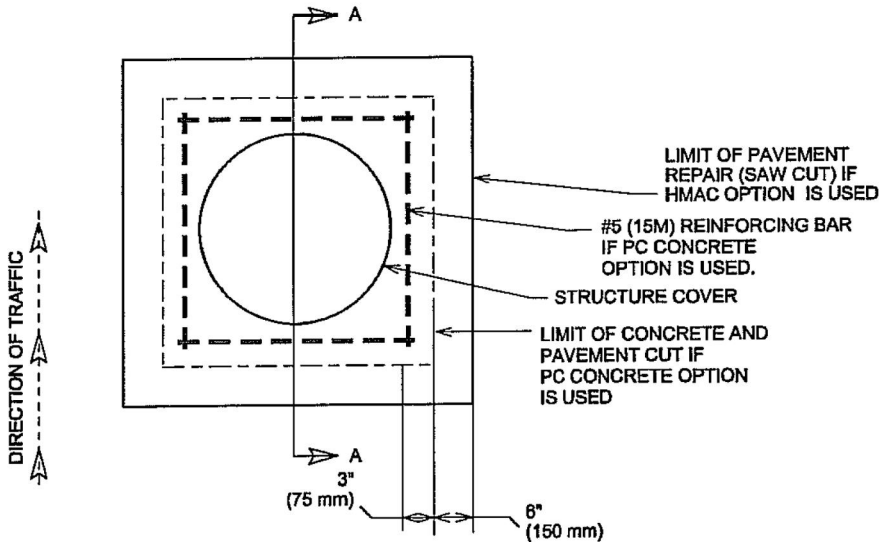
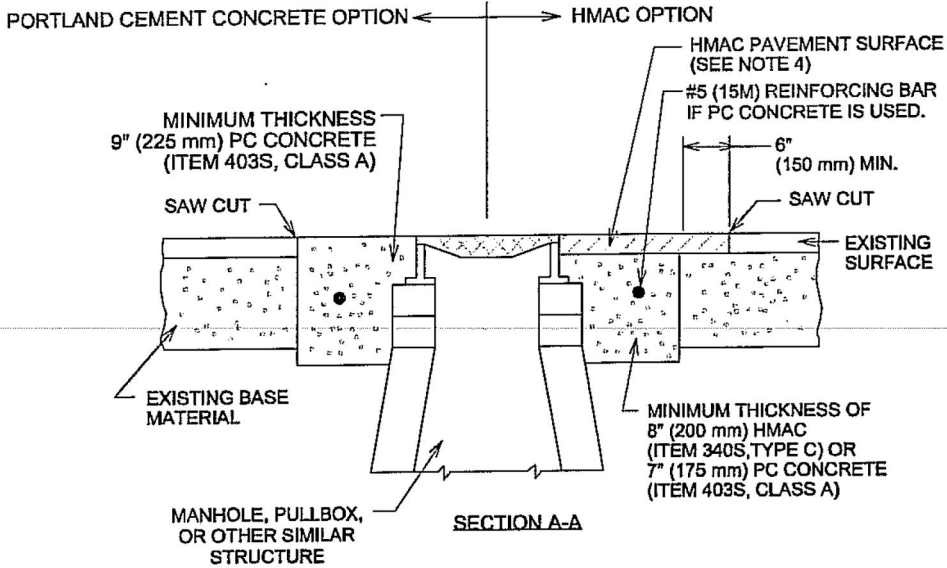
WW-03.dwg



CITY OF MANOR
EST. 1872
TEXAS

THE ARCHITECT/ENGINEER ASSUMES RESPONSIBILITY FOR THE APPROPRIATE USE OF THIS DETAIL. (NOT TO SCALE)

MISCELLANEOUS REPAIRS AROUND UTILITY CASTINGS (UCM SECTION 5.8.3)



NOTES:

1. IF PC CONCRETE IS USED AROUND THE MANHOLE, THE CONCRETE SHALL BE REINFORCED WITH #5 (15M) BARS AS SHOWN. THE CONCRETE SHALL EXTEND TO EDGE OF SAW CUT PAVEMENT EDGE.
2. REQUIREMENTS FOR NEW MANHOLE CONSTRUCTION AND MINOR MANHOLE ADJUSTMENTS IN NEW, RECONSTRUCTION AND REPAVING PROJECTS ARE INCLUDED IN STANDARD NO. 506S-4 AND 506S-4A.
3. REQUIREMENTS FOR WATER VALVE ADJUSTMENTS ARE INCLUDED IN STANDARD DETAILS 511S-13A AND 511S-13B.
4. REPLACEMENT HMAC SURFACE LAYER SHALL BE OF THE TYPE AND THICKNESS BASED ON FUNCTIONAL CLASSIFICATION.
 - a) MIN. 2" (50 mm) HMAC TYPE "D" FOR TRENCH REPAIR IN LOCAL/RESIDENTIAL STREETS.
 - b) MIN. 3" (75 mm) HMAC TYPE "C" FOR TRENCH REPAIR IN COLLECTOR/ARTERIAL STREETS. SEE ITEM 340S, SECTION 340S.4.
5. REFER TO UCM SECTION 5.8.3 FOR ADDITIONAL BACKFILL REQUIREMENTS.

CITY OF AUSTIN
DEPARTMENT OF PUBLIC WORKS

CASTING ADJUSTMENT

STANDARD NO.

1100S-1

THE ARCHITECT/ENGINEER ASSUMES RESPONSIBILITY FOR APPROPRIATE USE OF THIS STANDARD.

ADOPTED

1/4/10

[Handwritten signature]