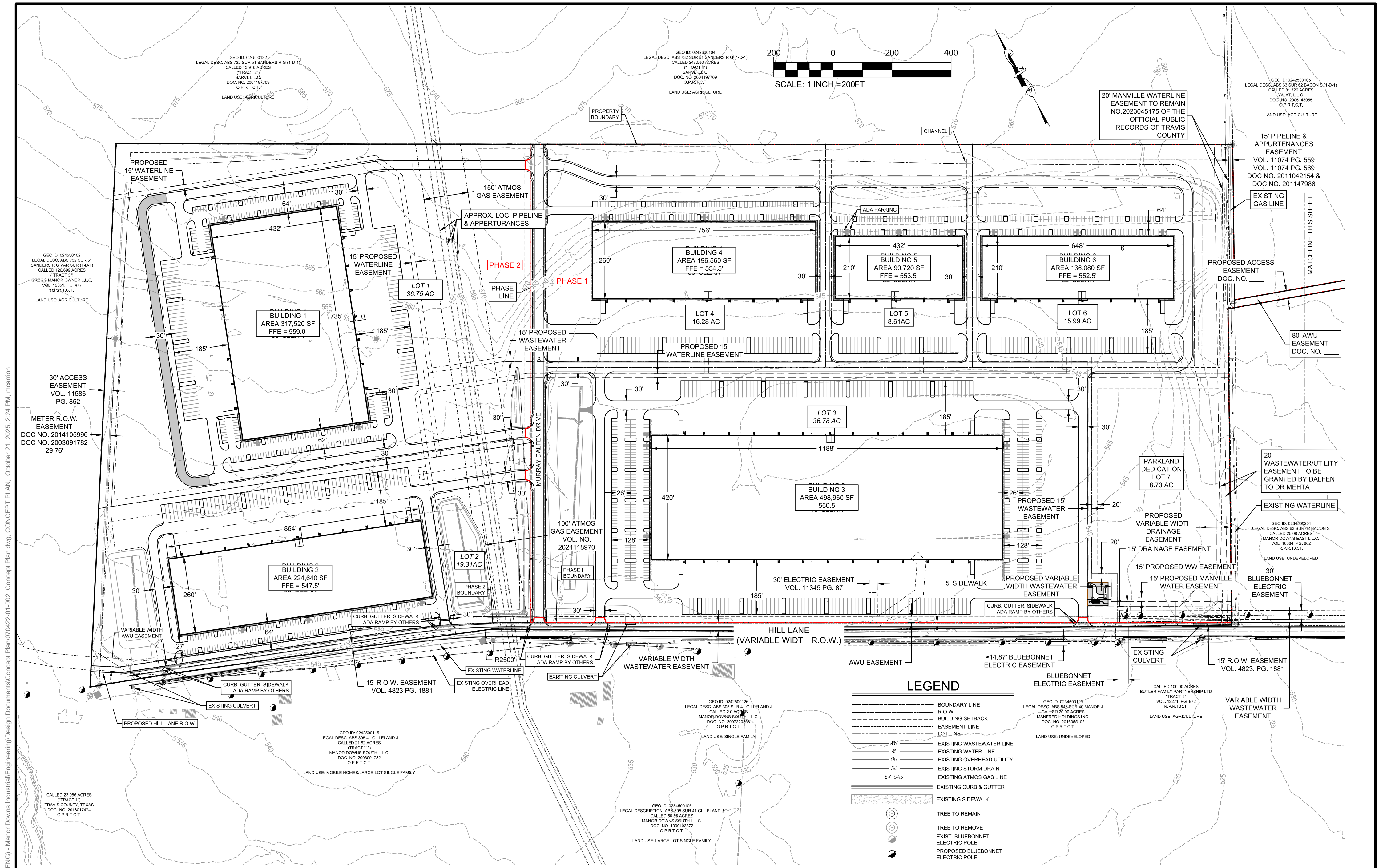
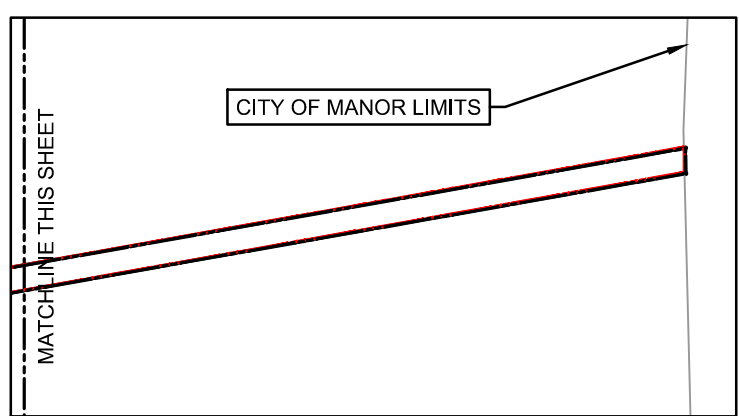


V:\070422 - Dallen Industrial\070422-01-002 (ENG) - Manor Downs Industrial\Engineering\Design Documents\Concept Plan\070422-01-002_Concept Plan.dwg, October 21, 2025, 2:24 PM, mcarion



- NOTES:
- THIS SITE IS TO BE ZONED IN-2 HEAVY INDUSTRIAL.
 - 7 NON-RESIDENTIAL LOTS ARE PROPOSED WITH THIS DEVELOPMENT.
 - LOT 7 IS TO BE DEDICATED AS PARKLAND TO THE CITY OF MANOR.



DATE: 5/27/2025		DRAWN BY: LDB	
SCALE: 1" = 200'		CHECKED BY: MGC	
JOB No: 070422-01-002		DESIGNED BY: MK	
REVISIONS			
REVISION	DESCRIPTION		DATE
---	---		---

Bowman

© 2024 Bowman Consulting Group Ltd
TBPE Firm Registration No. F-14309

807 Las Cimas Parkway
Suite 350
Austin, Texas 78746

Phone: (512) 327-1180
Fax: (512) 327-4062
www.bowman.com

CONCEPT PLAN

MANOR DOWNS INDUSTRIAL HILL LANE MANOR, TEXAS

SHEET 2 OF 3

STATE OF TEXAS

MARISA KEISER

141397

PROFESSIONAL ENGINEER

October 21, 2025

PRELIMINARY NOT FOR CONSTRUCTION