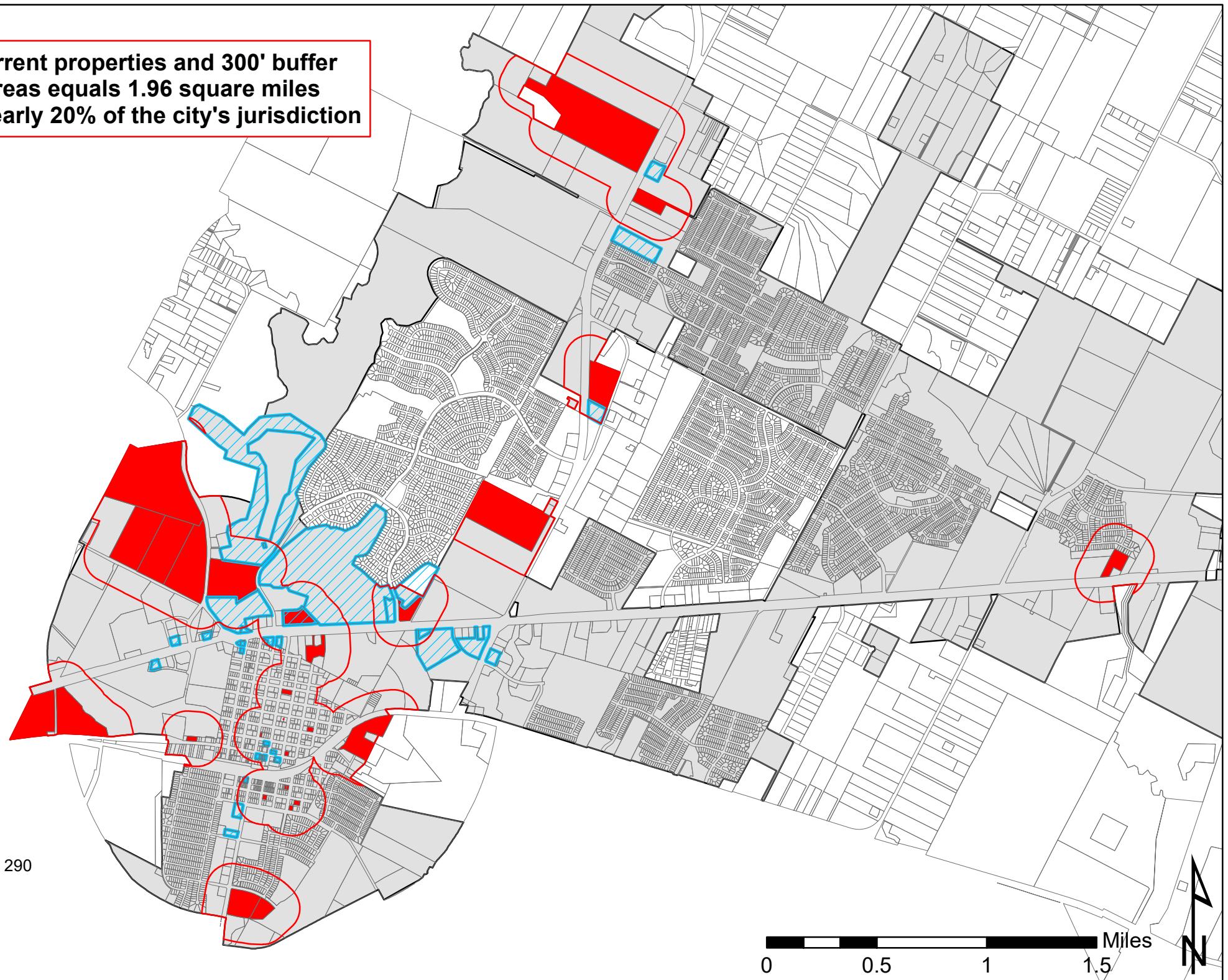


**Current properties and 300' buffer areas equals 1.96 square miles or nearly 20% of the city's jurisdiction**



**Impacted Businesses:**

- |   |   |
|---|---|
| 1. 7-11 - 11209 E US 290                      | 12. Mini Food Mart - 10400 E. US Hwy 290          |
| 2. 973 Express - 13801 N. FM 973              | 13. Pho Yes - 11300 E. US Hwy 290                 |
| 3. Beer 30 - 14001 Shadowglen Blvd            | 14. Walmart Fuel - 11821 E. US Hwy 290            |
| 4. Buddies Market 2 - 14825 N. FM 973         | 15. Walmart - 11923 E. US Hwy 290                 |
| 5. Carnicerias La Fogata - 216 E. Parsons St. | 16. Ramos - 116 E. Parsons St.                    |
| 6. Casa Garcia's - 12700 Lexington St.        | 17. Shadowglen Golf Club - 12801 Lexington St.    |
| 7. La Salsas - 109 N. Burnet St               | 18. Playground at 973 - 104 W. Carrie Manor St.   |
| 8. Lituation - 201 E. Parsons St              | 19. Twisted Liqours - 14001 Shadowglen Blvd.      |
| 9. Los Buhos 2 - 116 E. Parsons St.           | 20. Urban Liqour - 11211 E. US Hwy 290            |
| 10. Manor Grocery - 102 E. Parsons St.        | 21. Xpress Liqour - 12130 N. FM 973               |
| 11. Manor Xpress Mart - 12130 N. FM 973       | 22. 10555 Manor (290 Exxon) - 11016 E. US Hwy 290 |

**22 of 32 licensed businesses within the city limits are impacted.**



# Proposed Alcohol Sales Restricted Areas

- TABC Permitted Locations
- Church, School, Hospital, Daycare Locations
- Church, School, Hospital, Daycare 300' Buffer
- City Limits