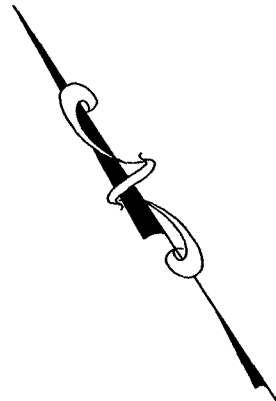
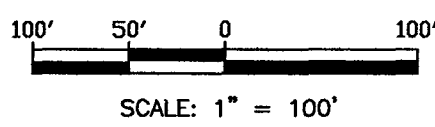
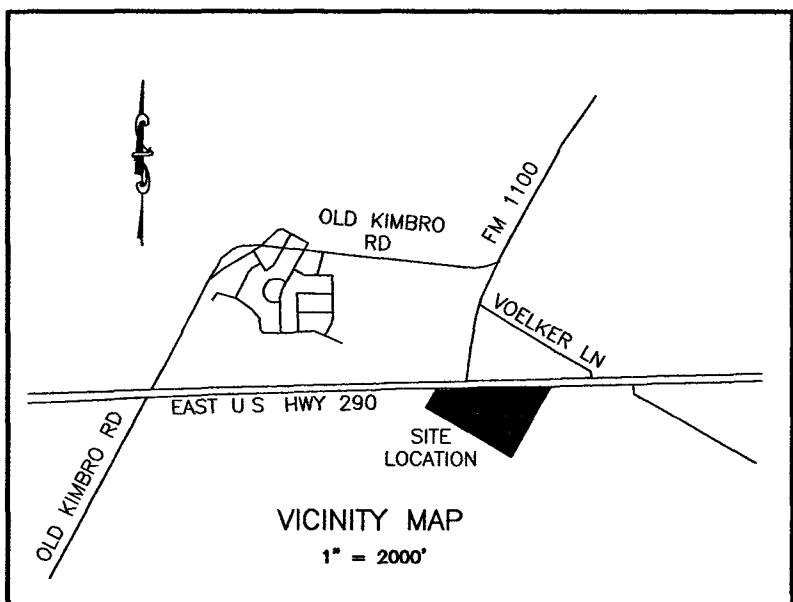
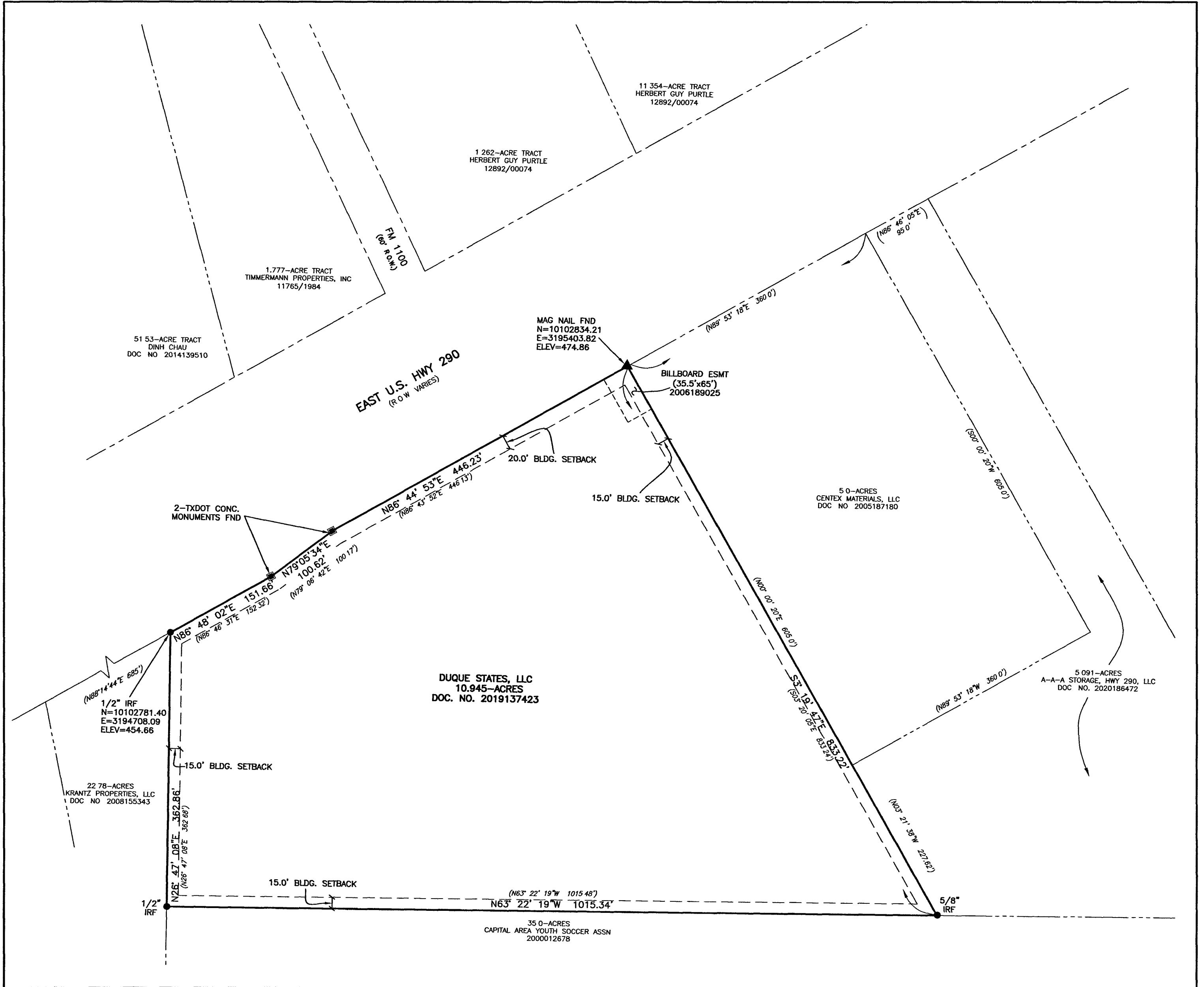


DUQUE ESTATES SUBDIVISION

LEGEND

- BOUNDARY LINE
- - - PROPERTY LINE
- - - RIGHT OF WAY LINE
- (xxx) PER RECORD
- (IRF) IRON ROD FOUND
- (IRS) IRON ROD SET
- P.U.E. PUBLIC UTILITY EASEMENT

NOTE:  
THE COORDINATES SHOWN ARE BASED ON THE TEXAS STATE PLANE COORDINATE SYSTEM, CENTRAL ZONE, NAD83 (CORS) DATUM. THE BEARINGS SHOWN ARE GRID BEARINGS.



SHEET 2 OF 2  
PLAT PREPARATION DATE: 03-02-2022

**ITG** I T Gonzalez  
Engineers

SURVEYING FIRM REGISTRATION NO. 100573-0  
ENGINEERING FIRM REGISTRATION NO. F-3216  
3501 MANOR ROAD AUSTIN, TEXAS 78723  
TEL:(512)447-7400 FAX:(512)447-6389

I.T.G. ENGINEERS PROJECT NO: P21.11.01.01

© 2022 I T GONZALEZ ENGINEERS