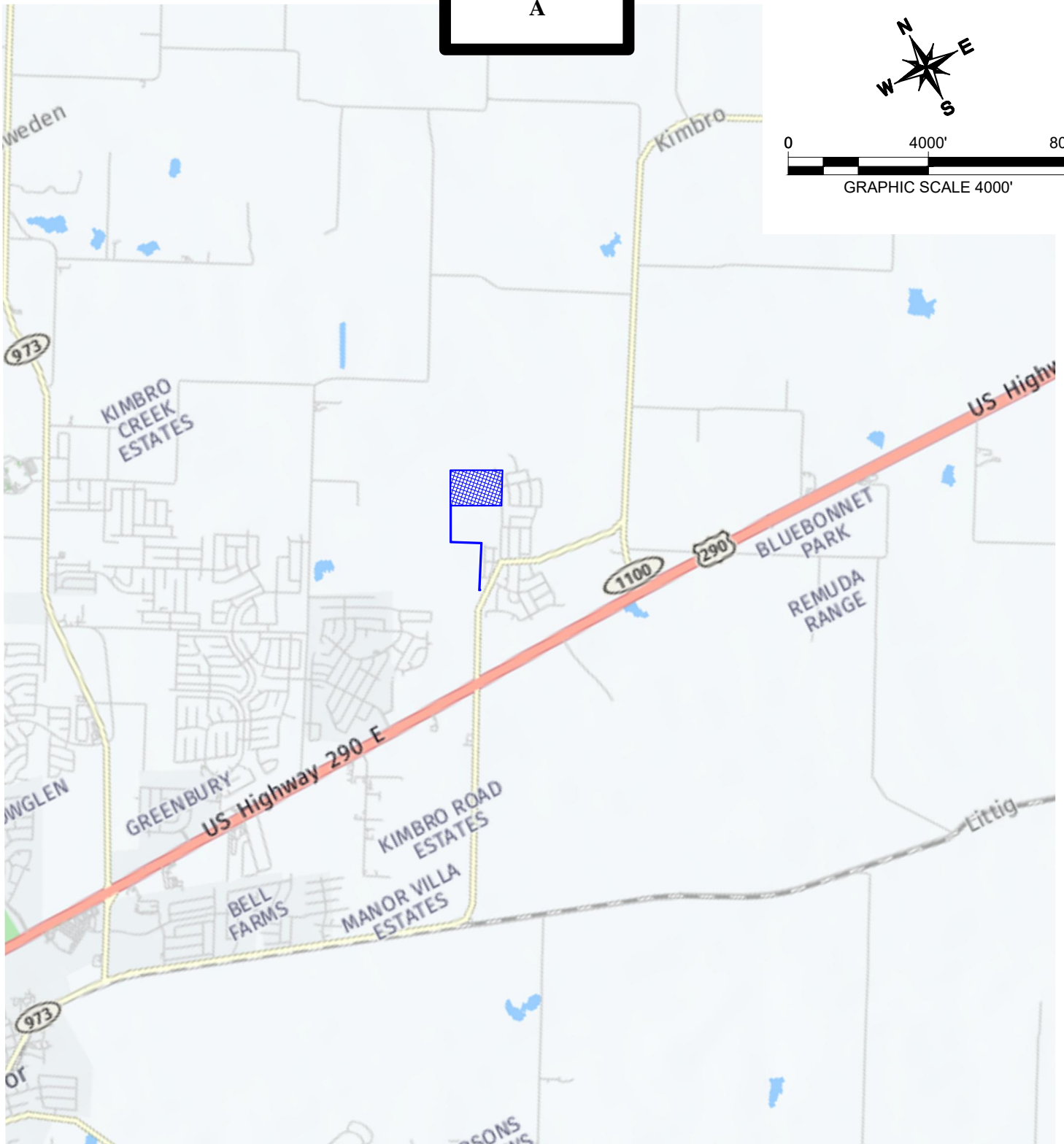
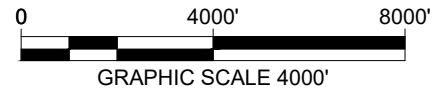


Exhibit
A



LEGEND



TRACT OF
LAND

CITY OF MANOR,
TRAVIS COUNTY, TEXAS
DATE CREATED: 7/25/2024

GENERAL MAP -
FORESTAR (USA) REAL ESTATE GROUP, INC. TO
AMEND MANVILLE WSC (CCN NO. 11144) BY
13.248 AGREEMENT IN TRAVIS COUNTY

Kimley»Horn

© 2024 KIMLEY-HORN AND ASSOCIATES, INC.
1501 S. AUSTIN AVE., SUITE 1310, GEORGETOWN, TX 78626
PHONE: 512-330-0788 FAX: 512-418-1791
WWW.KIMLEY-HORN.COM
TEXAS REGISTERED ENGINEERING FIRM F-928

Plotted By: Caplin, Warren Date: July 25, 2024 10:23:09am File Path: \\kimley-horn.com\NS_GEO\AUS_Civil\069255700_Sky Village South\Cad\Minor Heights Phase A\ExhibitA\CCN ExhibitA_V20240724-FUC-ExhibitA.dwg This document, together with the concepts and designs presented herein, is intended only for the specific purpose and client for which it was prepared. Reuse of and improper reliance on this document without written authorization and adaptation by Kimley-Horn and Associates, Inc. shall be without liability to Kimley-Horn and Associates, Inc.