

RESOLUTION NO. 2022-17

A RESOLUTION OF THE CITY OF MANOR, TEXAS, ACCEPTING THE PETITION FOR ANNEXATION OF 93.775 ACRES OF LAND, MORE OR LESS; BEING LOCATED IN TRAVIS COUNTY, TEXAS AND ADJACENT AND CONTIGUOUS TO THE CITY LIMITS; AND PROVIDING FOR OPEN MEETINGS AND OTHER RELATED MATTERS.

WHEREAS, the owner(s) of certain property located within Travis County, Texas have petitioned the City of Manor, Texas (herein the “City”) a Texas home-rule city, for annexation of said property, more particularly described herein (the “Subject Property”) into the corporate limits of the City;

WHEREAS, the Subject Property is contiguous and adjacent to the corporate limits of the City, within the extraterritorial jurisdiction of the City and the owner(s) have made application for annexation;

WHEREAS, after review and consideration of such requests and petition for annexation from the owner(s) of the Subject Property, the City Council of the City of Manor, Texas (the “City Council”) finds that the Subject Property may be annexed pursuant to §43.0671 of the Texas Local Government Code;

WHEREAS, pursuant to §43.0672, Texas Local Government Code, the City and the undersigned have negotiated and entered into a written agreement for the provision of services to the Subject Property, said agreement being attached hereto as Exhibit “B” and is incorporated herein for all purposes; and,

WHEREAS, the petitioner has agreed and consented to the annexation of the Subject Property by the City and further agreed to be bound by all acts, ordinances, and all other legal action now in force and effect within the corporate limits of the City and all those which may be hereafter adopted;

NOW THEREFORE, BE IT RESOLVED BY THE CITY COUNCIL OF THE CITY OF MANOR, TEXAS, THAT:

SECTION ONE: The foregoing recitals are hereby found to be true and correct and are hereby adopted by the City Council and made a part hereof for all purposes as findings of fact.

SECTION TWO: The petition for annexation of the following described Subject Property, including abutting streets, roadways, and rights of way, not previously annexed into the City and the draft agreement for the provision of services shown in Exhibit “B”, are hereby accepted:

Tract One:

Being 59.765 acres of land, more or less, being a portion of that certain tract of land stated to contain 60.292 acres, more or less, out of the Sumner Bacon Survey No. 62, Abstract No. 63 in Travis County, Texas, as described in Distribution Deed recorded in Document No. 2020120760 Official Public Records, Travis County, Texas, and being the same land conveyed to the Carrillo Family Partnership in Document No. 2013001967, Official Public Records, Travis County, Texas, said 59.765 tract of land being more particularly described in Exhibit "A" attached hereto and incorporated herein for all purposes.

Tract Two:

Being 30.580 acres of land, more or less, out of the Sumner Bacon Survey No. 62, Abstract No. 63 in Travis County, Texas, being a Western portion of that certain called 39.4 acre tract described in Deed recorded in Document No. 2004009801 Official Public Records, Travis County, Texas, said 30.580 tract of land being more particularly described in Exhibit "A" attached hereto and incorporated herein for all purposes.

Tract Three:

Being 3.43 acres of land, more or less, situated in the Sumner Bacon Survey No. 62, Abstract No. 63 in Travis County, Texas, being a portion of Gregg Lane (Right-of-Way Varies) in the City of Manor, Texas Extra Territorial Jurisdiction (ETJ), said 3.43 tract of land being more particularly described in Exhibit "A" attached hereto and incorporated herein for all purposes.

A public hearing is set for the date of November 16, 2022. Notice of such hearing shall be published and posted in accordance with §43.0673, Texas Local Government Code, and the hearing shall be open to the public to accept public comment on the annexation request. In the event of a conflict between the Subject Property description contained herein, Exhibit "A" shall control.

SECTION THREE: Should any section or part of this Resolution be held unconstitutional, illegal, or invalid, or the application to any person or circumstance thereof ineffective or inapplicable, such unconstitutionality, illegality, invalidity, or ineffectiveness of such section or part shall in no way affect, impair or invalidate the remaining portion or portions thereof; but as to such remaining portion or portions, the same shall be and remain in full force and effect and to this end the provisions of this Resolution are declared severable.

SECTION FOUR: It is hereby officially found and determined that the meeting at which this Resolution is passed was open to the public as required and that the public notice of the time, place, and purpose of said meeting was given as required by the Open Meetings Act, Chapter 551, Texas Government Code.

PASSED AND APPROVED this the 2nd day of November 2022.

THE CITY OF MANOR, TEXAS

Dr. Christopher Harvey,
Mayor

ATTEST:

Lluvia T. Almaraz,
City Secretary

Exhibit "A"
Subject Property Description
+/- 93.775 Acres

Tract One

EXHIBIT A (1 OF 12)



Professional Land Surveying, Inc.
Surveying and Mapping

Office: 512-443-1724
Fax: 512-389-0943

3500 McCall Lane
Austin, Texas 78744

59.765 ACRES
SUMNER BACON SURVEY No. 62, ABSTRACT No. 63
TRAVIS COUNTY, TEXAS

A DESCRIPTION OF 59.765 ACRES, BEING A PORTION OF THAT CERTAIN TRACT OF LAND STATED TO CONTAIN 60.292 ACRES, MORE OR LESS, OUT OF THE SUMNER BACON SURVEY NO. 62, ABSTRACT NO. 63, IN TRAVIS COUNTY, TEXAS AS DESCRIBED IN DISTRIBUTION DEED RECORDED IN DOCUMENT NO. 2020120760 OFFICIAL PUBLIC RECORDS, TRAVIS COUNTY, TEXAS, AND BEING THE SAME LAND CONVEYED TO THE CARRILLO FAMILY PARTNERSHIP IN DOCUMENT NO. 2013001967, OFFICIAL PUBLIC RECORDS, TRAVIS COUNTY, TEXAS; SAID 59.765 ACRES BEING MORE PARTICULARLY DESCRIBED BY METES & BOUNDS AS FOLLOWS:

BEGINNING at a 1/2" rebar found in the north right-of-way of Gregg Lane (variable width right-of-way), being the southeast corner of said 60.292 acre tract, and also the southwest corner of a 15.74 acre tract described in Document No. 2016051094 of the Official Public Records of Travis County, Texas, from which a TxDot Type II disk found in the north right-of-way of Gregg Lane, for the southeast corner of a 36.14 acre tract described in Document No. 2014113251 of the Official Public Records of Travis County, Texas bears South 62°01'41" East a distance of 1995.25 feet;

THENCE North 62°17'26" West, with the south line of the 60.292 acre tract, same being the north right-of-way line of Gregg Lane, a distance of 2133.10 feet to a calculated point in the approximate centerline of Wilbarger Creek;

THENCE with the approximate centerline of Wilbarger Creek, being the west line of said 60.292 acre tract, and the east line of an 85.796 acre tract described Document No. 2008118667 of the Official Public records of Travis County, Texas, the following thirty-two (32) courses:

1. North 73°18'55" East, a distance of 46.89 feet to a to a calculated point;
2. North 65°28'25" East, a distance of 50.67 feet to a to a calculated point;
3. North 51°10'42" East, a distance of 48.58 feet to a to a calculated point;
4. North 48°30'24" East, a distance of 46.23 feet to a to a calculated point;
5. North 49°14'49" East, a distance of 52.77 feet to a to a calculated point;

1662-001-59.765 ACS

EXHIBIT A (2 OF 12)

6. North 45°14'55" East, a distance of 55.96 feet to a to a calculated point;
7. North 43°43'26" East, a distance of 52.86 feet to a to a calculated point;
8. North 41°05'22" East, a distance of 48.00 feet to a to a calculated point;
9. North 32°42'55" East, a distance of 42.39 feet to a to a calculated point;
10. North 36°20'34" East, a distance of 43.28 feet to a to a calculated point;
11. North 24°58'46" East, a distance of 45.09 feet to a to a calculated point;
12. North 20°50'58" East, a distance of 58.26 feet to a to a calculated point;
13. North 11°43'28" East, a distance of 55.36 feet to a to a calculated point;
14. North 12°03'40" East, a distance of 59.87 feet to a to a calculated point;
15. North 11°44'50" East, a distance of 49.40 feet to a to a calculated point;
16. North 20°31'26" East, a distance of 49.47 feet to a to a calculated point;
17. North 26°12'00" East, a distance of 48.98 feet to a to a calculated point;
18. North 19°47'54" East, a distance of 56.22 feet to a to a calculated point;
19. North 08°36'09" East, a distance of 45.62 feet to a to a calculated point;
20. North 32°55'35" East, a distance of 52.23 feet to a to a calculated point;
21. North 47°27'44" East, a distance of 55.81 feet to a to a calculated point;
22. North 45°04'59" East, a distance of 51.38 feet to a to a calculated point;
23. North 43°53'12" East, a distance of 32.75 feet to a to a calculated point;
24. North 08°50'46" East, a distance of 41.41 feet to a to a calculated point;
25. North 05°45'16" West, a distance of 32.84 feet to a to a calculated point;
26. North 01°15'08" East, a distance of 35.86 feet to a to a calculated point;
27. North 14°04'03" East, a distance of 26.74 feet to a to a calculated point;
28. North 34°11'10" East, a distance of 54.41 feet to a to a calculated point;

1662-001-59.765 ACS

EXHIBIT A (3 OF 12)

- 29. North 26°59'21" East, a distance of 41.68 feet to a to a calculated point;
- 30. North 36°09'53" East, a distance of 43.97 feet to a to a calculated point;
- 31. North 25°00'27" East, a distance of 44.74 feet to a to a calculated point;
- 32. North 00°27'57" East, a distance of 24.90 feet to a to a calculated point for the northwest corner of the 60.292 acre tract, being the southwest corner of a 39.4 acre tract described in Document No. 2004009801 of the Official Public Records of Travis County, Texas ;

THENCE South 61°38'01" East with the south line of said 39.4 acre tract, same being the north line of the 60.292 acre tract, passing a 1/2" rebar at 20.62 feet, and continuing for a total distance of 1100.33 feet to a 1/2 " rebar with 'Chaparral' cap set;

THENCE South 00°41'52" East, crossing the 60.292 acre tract a distance of 308.96 feet to a 1/2" rebar found for an interior corner of the 60.292 acre tract, same being the southernmost southwest corner of the 39.4 acre tract;

THENCE South 62°04'50" East with the north line of the 60.292 acre tract, same being the south line of the 39.4 acre tract, a distance of 551.18 feet to a 1/2" rebar found with plastic cap for the southeast corner of the 39.4 acre tract;

THENCE South 61°50'55" East, continuing with the north line of the 60.292 acre tract, a distance of 250.39 feet to a 2" iron pipe found in for the northeast corner of the 60.292 acre tract, same being the northwest corner of said 15.74 acre tract;

THENCE South 27°32'42" West, with the east line of the 60.292 acre tract, same being the west line of said 15.74 acre tract, a distance of 1131.13 feet to the **POINT OF BEGINNING**; containing 59.765 acres of land, more or less;

Surveyed on the ground on August 3, 2020.

Bearing Basis: The Texas Coordinate System of 1983 (NAD83), Central Zone, based on GPS solutions from the National Geodetic Survey (NGS) On-line Positioning User Service (OPUS).

Attachments: Drawing 1662-001-59.765ac

Paul J. Flugel 1-18-2021

Paul J. Flugel
Registered Professional Land Surveyor
State of Texas No. 5096
TBPLS Firm No. 10124500



1662-001-59.765 ACS

Tract Two

EXHIBIT A (5 OF 12)



Professional Land Surveying, Inc.
Surveying and Mapping

Office: 512-443-1724
Fax: 512-389-0943

3500 McCall Lane
Austin, Texas 78744

30.580 ACRES
SUMNER BACON SURVEY No. 62, ABSTRACT No. 63
TRAVIS COUNTY, TEXAS

A DESCRIPTION OF 30.580 ACRES OUT OF THE SUMNER BACON SURVEY NO. 62, ABSTRACT NO. 63, IN TRAVIS COUNTY, TEXAS, BEING A WESTERN PORTION OF THAT CERTAIN CALLED 39.4 ACRE TRACT DESCRIBED IN DEED RECORDED IN DOCUMENT NO. 2004009801 OFFICIAL PUBLIC RECORDS, TRAVIS COUNTY, TEXAS; SAID 30.580 ACRES BEING MORE PARTICULARLY DESCRIBED BY METES & BOUNDS AS FOLLOWS:

BEGINNING at a 1/2" rebar with 'CHAPARRAL' cap set in the north line of a 60.292 acre tract described in Document No. 2013001967 of the Official Public Records of Travis County, Texas, same being the south line of said 39.4 acre tract, from which a 1/2" rebar found for the northernmost northeast corner of the 60.292, same being an angle point in the south line of the 39.4 acre tract, bears South 61°38'05" East a distance of 575.95 feet;

THENCE North 61°37'58" West with the south line of the 39.4 acre tract, same being the north line of the 60.292 acre tract, passing a 1/2" rebar found at a distance of 648.82 feet, and continuing 20.62 feet, for total distance of 669.44 feet to a calculated point in the approximate centerline of Wilbarger Creek, also being the west line of the 39.4 acres and the being also the east line of an 85.769 acre tract described Document No. 2008118667 of the Official Public Records of Travis County, Texas;

THENCE with the approximate centerline of Wilbarger Creek, being the west line of the 39.4 acre tract and the east line of 85.796 acres described in Document No. 2008118667 of the Official Public Records of Travis County, Texas, the following forty (40) courses:

1. North 00°28'28" East, a distance of 9.07 feet to a to a calculated point;
2. North 05°17'24" West, a distance of 31.85 feet to a to a calculated point;
3. North 01°00'43" West, a distance of 39.99 feet to a to a calculated point;
4. North 13°37'54" West, a distance of 36.17 feet to a to a calculated point;
5. North 03°30'27" West, a distance of 43.17 feet to a to a calculated point;
6. North 10°14'35" West, a distance of 42.68 feet to a to a calculated point;

1662-001-30.580 AC

EXHIBIT A (6 OF 12)

7. North 22°31'57" West, a distance of 57.70 feet to a to a calculated point;
8. North 44°39'48" West, a distance of 45.77 feet to a to a calculated point;
9. North 54°56'29" West, a distance of 58.93 feet to a to a calculated point;
10. North 82°53'28" West, a distance of 51.24 feet to a to a calculated point;
11. South 71°16'10" West, a distance of 39.96 feet to a to a calculated point;
12. South 66°38'21" West, a distance of 51.94 feet to a to a calculated point;
13. North 89°22'53" West, a distance of 39.25 feet to a to a calculated point;
14. North 83°41'50" West, a distance of 51.08 feet to a to a calculated point;
15. North 89°13'01" West, a distance of 53.52 feet to a to a calculated point;
16. North 76°23'07" West, a distance of 54.75 feet to a to a calculated point;
17. North 76°02'03" West, a distance of 65.60 feet to a to a calculated point;
18. North 78°19'56" West, a distance of 54.07 feet to a to a calculated point;
19. South 73°52'38" West, a distance of 52.35 feet to a to a calculated point;
20. North 82°54'47" West, a distance of 58.96 feet to a to a calculated point;
21. North 48°39'03" West, a distance of 54.65 feet to a to a calculated point;
22. North 21°40'43" West, a distance of 61.82 feet to a to a calculated point;
23. North 00°14'42" East, a distance of 52.83 feet to a to a calculated point;
24. North 08°20'31" East, a distance of 53.76 feet to a to a calculated point;
25. North 08°21'04" East, a distance of 38.04 feet to a to a calculated point;
26. North 12°10'56" West, a distance of 48.92 feet to a to a calculated point;
27. North 26°26'40" West, a distance of 51.72 feet to a to a calculated point;
28. North 09°59'30" West, a distance of 51.78 feet to a to a calculated point;
29. North 09°26'58" West, a distance of 65.60 feet to a to a calculated point;

EXHIBIT A (7 OF 12)

30. North 23°17'46" East, a distance of 51.71 feet to a to a calculated point;
31. North 34°54'31" East, a distance of 42.87 feet to a to a calculated point;
32. North 48°43'04" East, a distance of 60.00 feet to a to a calculated point;
33. South 79°51'17" East, a distance of 39.39 feet to a to a calculated point;
34. South 58°38'03" East, a distance of 48.87 feet to a to a calculated point;
35. North 59°05'59" East, a distance of 54.70 feet to a to a calculated point;
36. North 00°19'10" East, a distance of 38.05 feet to a to a calculated point;
37. North 15°36'04" West, a distance of 56.41 feet to a to a calculated point;
38. North 06°24'18" East, a distance of 49.34 feet to a to a calculated point;
39. North 34°41'25" East, a distance of 55.35 feet to a to a calculated point;
40. North 08°45'25" West, a distance of 12.36 feet to a to a calculated point;

THENCE South 70°46'58" East, a distance of 13.00, to a 1/2" rebar found for an angle point in the west line of the 39.4 acres, same being the east line of the 85.796 acres;

THENCE North 22°06'01" East, a distance of 137.89 feet to a 1/2" rebar with 'CHAPARRAL' cap found for the northwest corner of the 39.4 acre tract, same being an interior corner of the 85.796 acre tract;

THENCE South 62°49'58" East, with the north line of the 39.4 acre tract, same being a south line of the 85.796 acre tract, a distance of 155.36 feet to a 1/2" rebar found for an angle point on the north line of the 39.4 acre tract, also being the southernmost northeast corner of the 85.796 acre tract, also being the southwest corner of a 170 acre tract described in Volume 8293, Page 104 of the Deed Records of Travis County, Texas;

THENCE South 62°31'16" East, continuing with the north line of the 39.4 acre tract, same being the south line of said 170 acre tract, being the south line of a 57.215 acre tract described in Document No. 2002251950 of the Official Public Records of Travis County, Texas; also being the south line of 39.00 acres described in Volume 8947, Page 802 of the Real Property Records of Travis County, Texas; a distance of 1513.14 feet to a 1/2" iron pipe found in the south line of the 39.00 acre tract, for the most northernmost corner of the 39.4 acre tract, same being the northwest corner of a 3.56 acre tract described in Document No. 2009010572 of the Official Public Records of Travis County, Texas;

1662-001-30.580 AC

EXHIBIT A (8 OF 12)

THENCE South 27°51'31" West, with an east line of the 39.4 acre tract, same being the west line of said 3.56 acre tract, also being the west line of a 75.37 acre tract described in Document No. 2008031946 of the Official Public Records of Travis County, Texas, passing a 1/2" iron pipe found for the most westerly southwest corner of said 75.37 acre tract at a distance of 548.40 feet and continuing 321.78 feet, for a total distance of 870.18 feet to the **POINT OF BEGINNING**, containing 30.580 acres of land, more or less.

Surveyed on the ground on August 3, 2020.

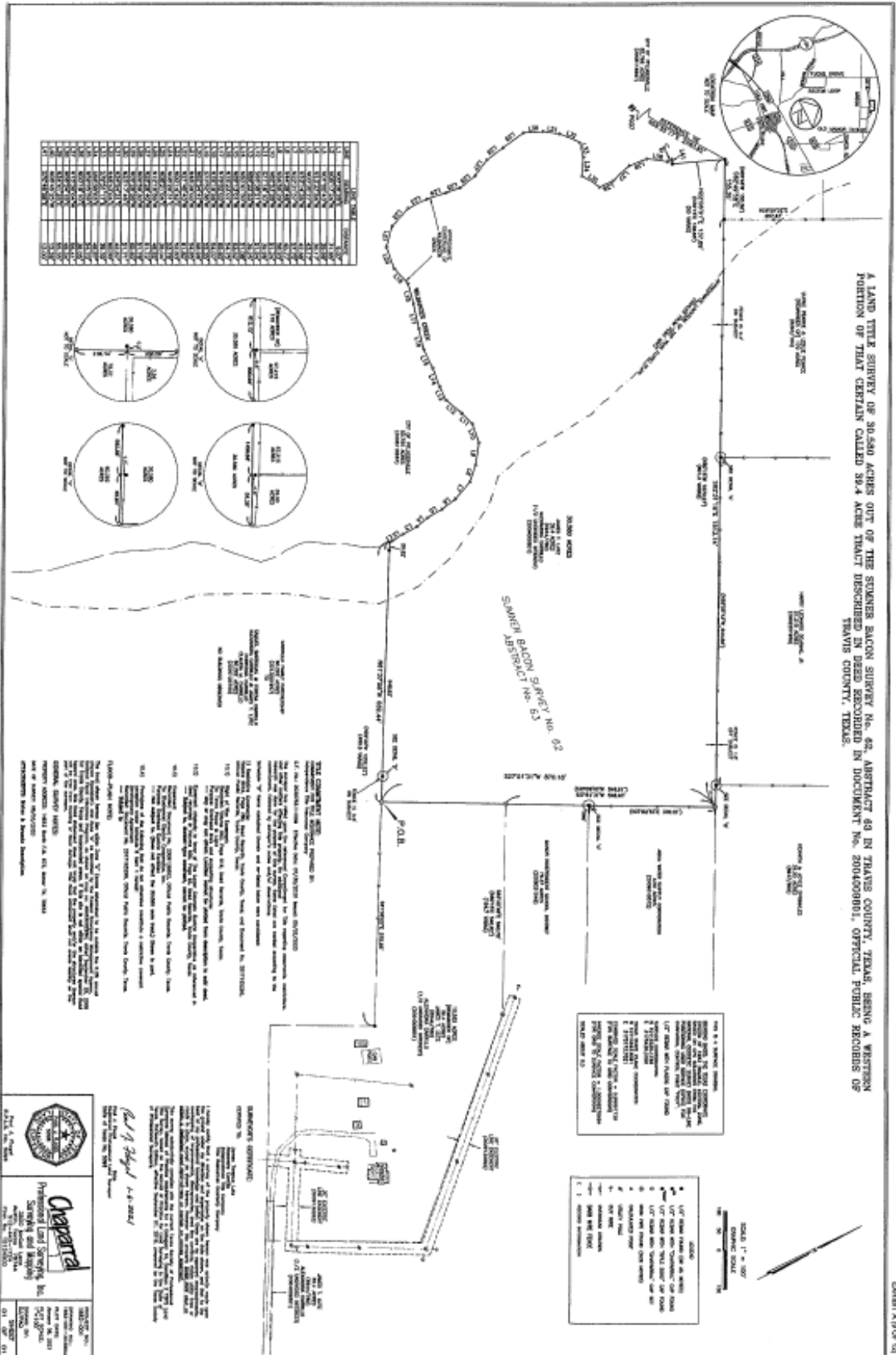
Bearing Basis: The Texas Coordinate System of 1983 (NAD83), Central Zone, based on GPS solutions from the National Geodetic Survey (NGS) On-line Positioning User Service (OPUS).

Attachments: Drawing 1662-001-30.580ac

Paul J. Flugel 1-6-2021

Paul J. Flugel
Registered Professional Land Surveyor
State of Texas No. 5096
TBPLS Firm No. 10124500





Tract Three

EXHIBIT A (10 OF 12)



3100 Alvin Devane Blvd, Suite 150
 Austin, Texas 78741
 Tel: 512.441.9493
 Fax: 512.445.2286
 www.jonescarter.com

GREGG LANE ANNEXATION

LEGAL DESCRIPTION

BEING 3.43-acres of land, more or less, situated in the Sumner Bacon Survey No. 62 Abstract No. 63 in Travis County, Texas; being a portion of Gregg Lane (Right-of-Way Varies) in the City of Manor, Texas Extra Territorial Jurisdiction (E.T.J.); said 3.43-acre tract of land being more particularly described by metes and bounds as follows with bearings and coordinates referenced to the Texas Coordinate System of 1983, Central Zone:

BEGINNING: at a 5/8-inch iron rod (N = 10,113,364.790, E = 3,179,217.978) found on the northeastern right of way of said Gregg Lane, for the southeastern corner of a called 59.765-acre tract of land to Gregg Lane Dev., LLC as described in a Special Warranty Deed W/Vendor's Lien in Document No. 2021051168 of the Official Public Records of Travis County, the southwestern corner of a called 15.74 acre tract of land to The Board of Trustees of the Manor Independent School District in a General Warranty Deed in Document No. 2016051094, the same being an approximate corner of the City of Manor Full Purpose City Limits;

THENCE: South 61°59'11" East a distance of 1049.87 feet along the northeastern line of said Gregg Lane, the southwestern line of the said 15.74-acre tract, the southwestern line of a called 36.14-acre tract to the United States of America Department of Transportation Federal Aviation Administration as described in a General Warranty Deed in Document No. 2014113251 of the Official Public Records of Travis County, to a calculated point for a corner of the City of Manor Full Purpose City Limits;

THENCE: South 26°55'54" West a distance of 39.90 feet along a line of the City of Manor Full Purpose City Limits, across said Gregg Lane to a calculated point on the southwestern line of said Gregg Lane, the Northeastern line of the called remainder of a 146.75-acre tract to Enfield Partners, LLC et al as described in Document No. 2019013312 of the Official Public Records of Travis County, Texas, for a corner of the City of Manor Full Purpose City Limits;

THENCE: North 62°31'06" West a distance of 1218.23 feet along the southwestern line of said Gregg Lane, the northeastern line of the remainder of the said 146.75-acre tract of land to a calculated point for the northeastern corner of a called 2.630-acre tract of land to Travis County as described in a General Warranty Deed in Document No. 2020123032 of the Official Public Records of Travis County, Texas;

THENCE: North 62°05'29" West a distance of 1895.89 feet continuing along the southwestern line of said Gregg Lane, the northeastern line of the said 2.630-acre tract to a calculated point for the northwestern corner of the said 2.630-acre tract, the northeastern corner of a called 2.341-acre tract of land to Travis County as described in a General Warranty Deed in Document No. 2020165985 of the Official Public Records of Travis County, Texas;

THENCE: North 62°38'23" West a distance of 143.76 feet continuing along the southwestern line of said Gregg Lane, the northeastern line of the said 2.341-acre tract to a calculated point;

THENCE: North 86°45'39" East a distance of 86.71 feet across said Gregg Lane to a calculated point on the northeastern line of said Gregg Lane for the southwestern corner of the said 59.765-acre tract;

EXHIBIT A (11 OF 12)

THENCE: South 62°17'26" East a distance of 2133.10 feet along the northeastern line of said Gregg Lane, the southwestern line of the said 59.765-acre tract to the **POINT OF BEGINNING** and CONTAINING an area of 3.43-acres of land, more or less.

This document was prepared under 22 Texas Administrative Code § 138.95, does not reflect the results of an on the ground survey, and is not to be used to convey or establish interests in real property except those rights and interests implied or established by the creation or reconfiguration of the boundary of the political subdivision for which it was prepared.

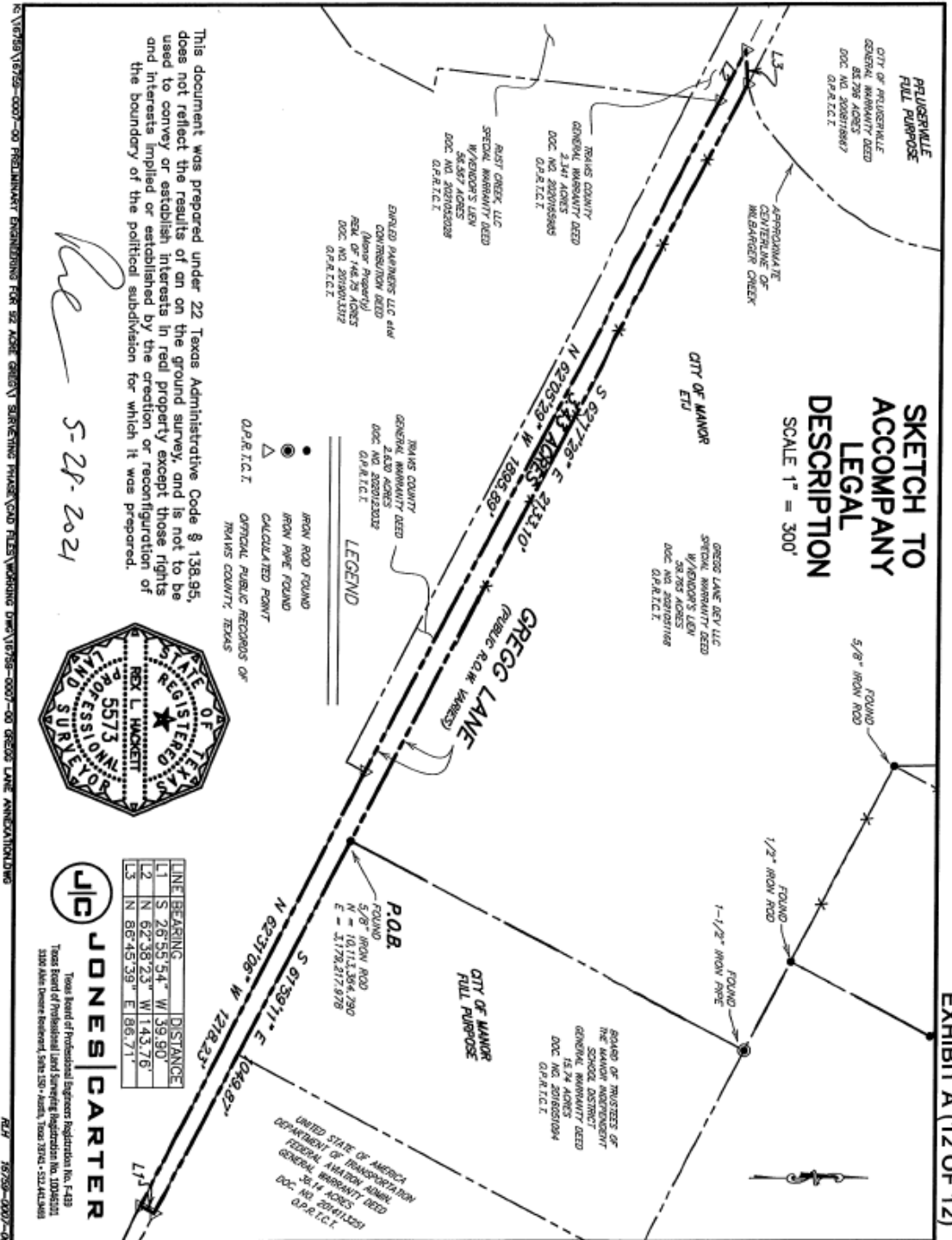


Rex L. Hackett
Registered Professional Land Surveyor No. 5573
rhackett@ionescarter.com

05-28-2021

Date:





Re 5-28-2021

This document was prepared under 22 Texas Administrative Code § 138.95, does not reflect the results of an on the ground survey, and is not to be used to convey or establish interests in real property except those rights and interests implied or established by the creation or reconfiguration of the boundary of the political subdivision for which it was prepared.

Exhibit "B"
Agreement Regarding Post-Annexation Provision of Services
For Property to be Annexed into the City of Manor