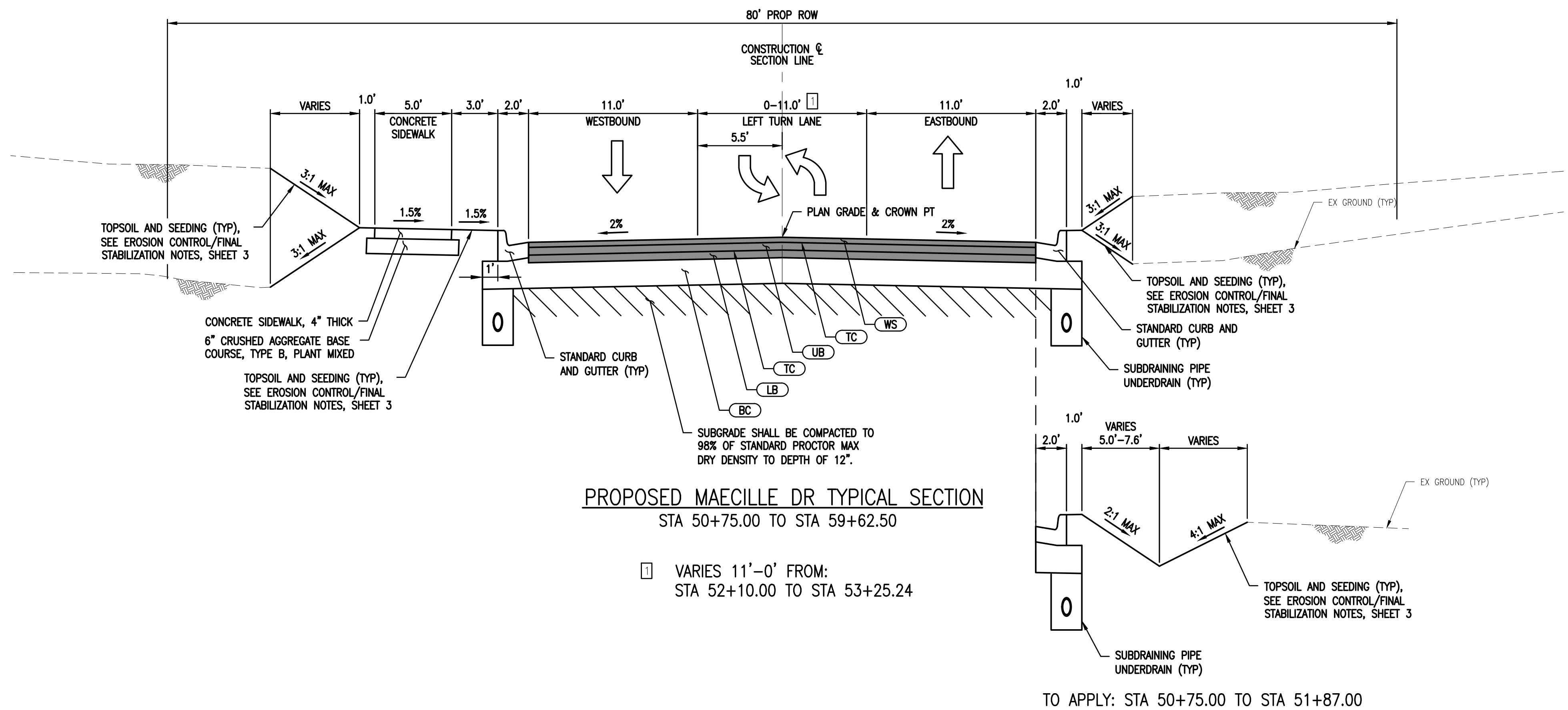


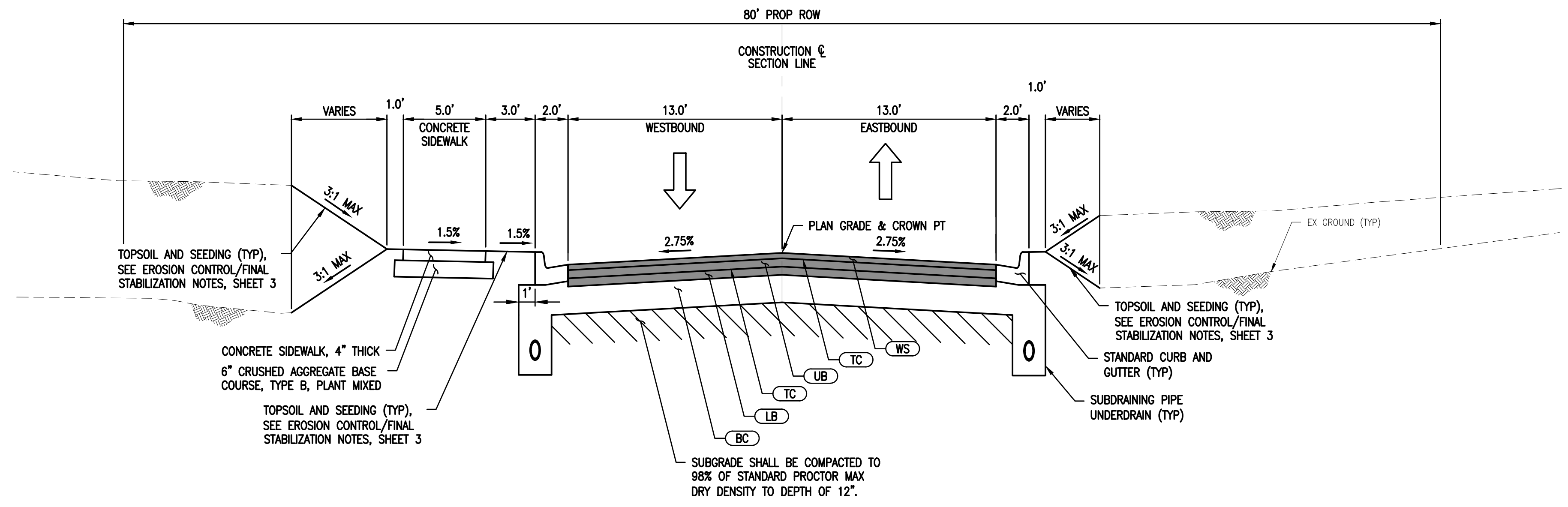
Exhibit B



PROPOSED MAECILLE DR TYPICAL SECTION
STA 50+75.00 TO STA 59+62.50

☐ VARIES 11'-0" FROM:
STA 52+10.00 TO STA 53+25.24

TO APPLY: STA 50+75.00 TO STA 51+87.00



PROPOSED MADISON BRANCH BLVD TYPICAL SECTION
STA 59+62.50 TO STA 63+11.15 (POE)

☐ SEE INTERSECTION GRADING SHEET 39 FOR
ROAD CROSS SLOPE TRANSITION IN
INTERSECTION.

DRAWING PATH: P:\9000_8999\9000\22010_Seggers & Maecille_IntersectionDrawings\Civil\Typicals\22010TYP.dwg Jan 19, 2024 - 3:48pm

DATE	PROJ NUMBER	ENG	PROJ INGR	CADD	COUNTY	CITY/VILLAGETOWNSHIP	SCALE	HORIZ DATUM	VERT DATUM
JAN 2024	80822010	JRD	-	KS	LINCOLN	MADISON	1"=5'	NAD83/ALST	NAVD83

CITY OF MADISON, ALABAMA PROJ.#22-039
SEGERS ROAD AND MAECILLE DRIVE INTERSECTION IMPROVEMENTS

TYPICAL SECTIONS

COPYRIGHT 2017 OHM ALL DRAWINGS AND WRITTEN MATERIALS APPEARING HEREIN CONSTITUTE THE ORIGINAL AND UNPUBLISHED WORK OF OHM AND THE SAME MAY NOT BE DUPLICATED, DISTRIBUTED, OR DISCLOSED WITHOUT PRIOR WRITTEN CONSENT OF OHM