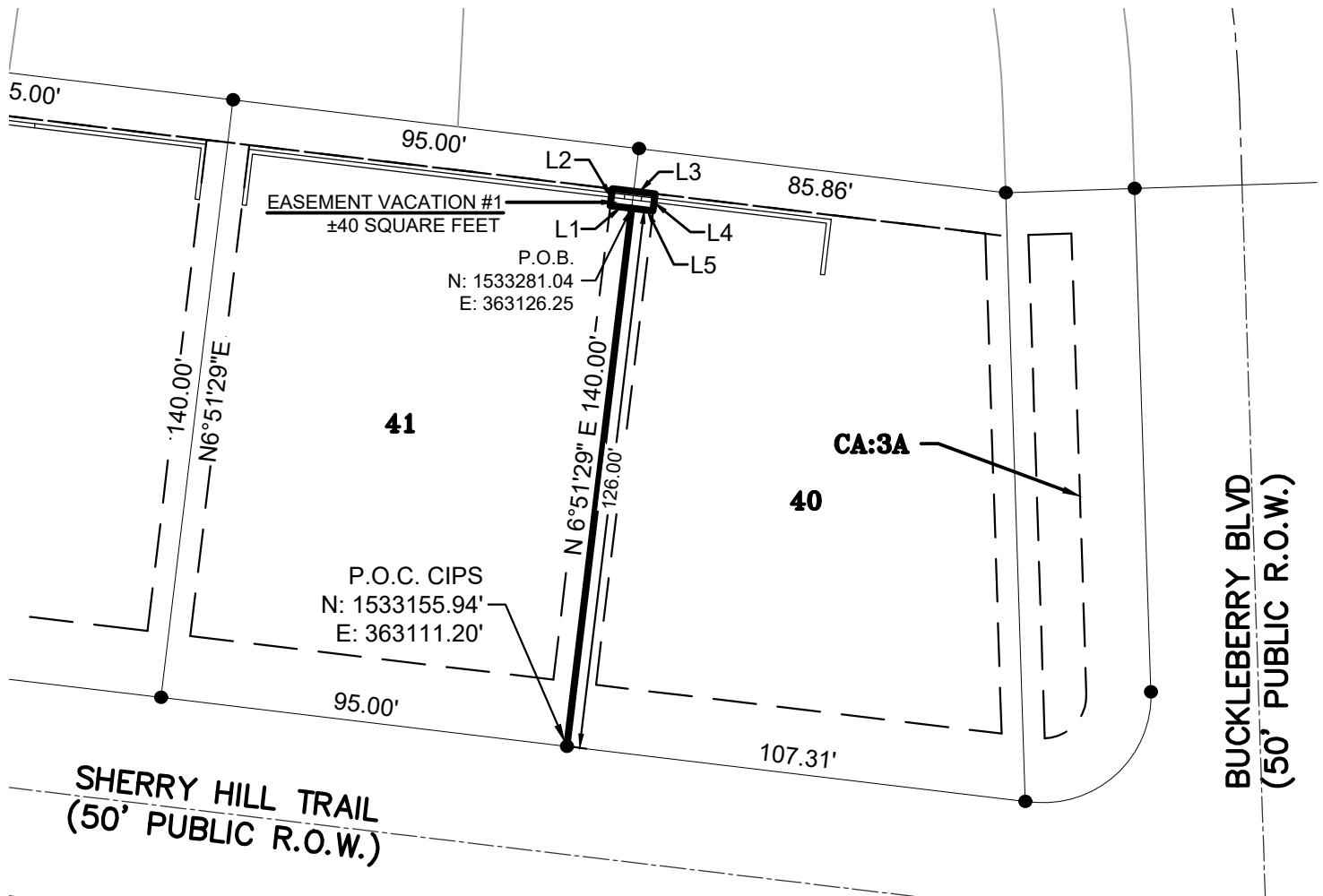


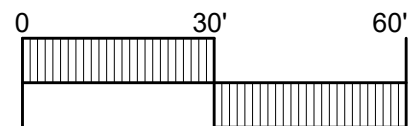
# EXHIBIT 1-B EASEMENT VACATION LOTS 40 & 41



## GENERAL NOTES:

1. NORTH ARROW AND COORDINATES AS SHOWN HEREON ARE BASED ON ALABAMA STATE PLANE COORDINATE SYSTEM EAST ZONE, NAD '83.
2. ALL MEASUREMENTS SHOWN ARE TO U.S. STANDARDS.
3. SOURCES OF INFORMATION: HERITAGE HILLS - PHASE 3 PB L PG 198

LINE TABLE		
NUMBER	DIRECTION	LENGTH
L1	N 83°08'31" W	5.00'
L2	N 6°51'29" E	4.00'
L3	S 83°08'31" E	10.00'
L4	S 6°51'29" W	4.00'
L5	N 83°08'31" W	5.00'



DRAWN BY: JCB

FIELD CREW: BJ

FIELD DATE: 12.10.24

OFFICE DATE: 07.11.25

CHECKED BY: ASM

SHEET: 2 OF 10

JOB NO: 21-001

EASEMENT VACATION EXHIBIT

**HERITAGE HILLS PHASE 3**

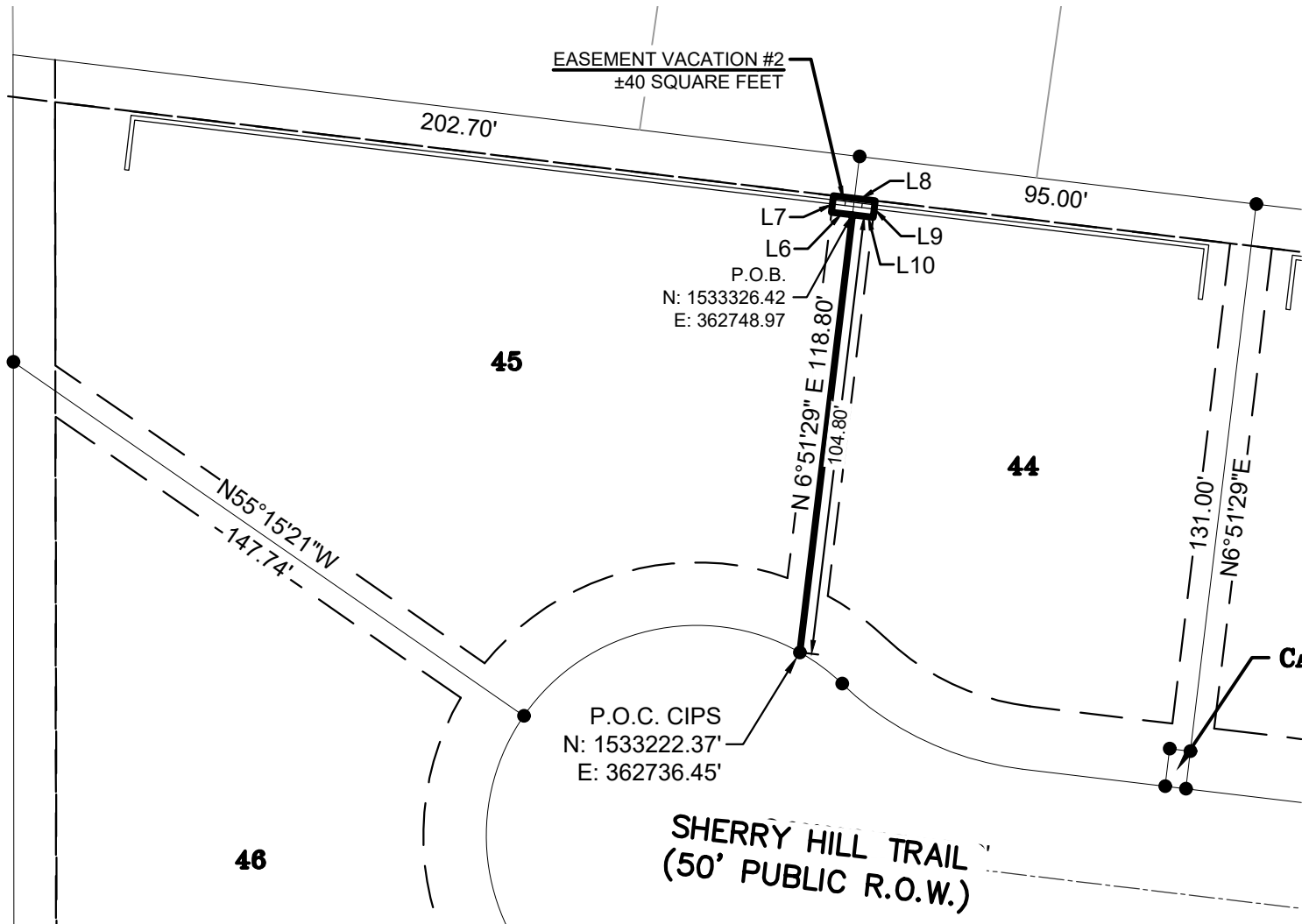
PLAT BOOK L PAGE 198

CITY OF MADISON, ALABAMA

SECTION 11, TOWNSHIP 4 SOUTH, RANGE 3 WEST



# **EXHIBIT 2-B** **EASEMENT VACATION LOTS 44 & 45**

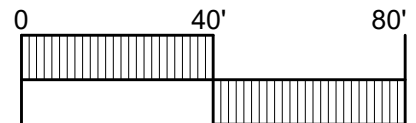


**LINE TABLE**

NUMBER	DIRECTION	LENGTH
L6	N 83°08'31" W	5.00'
L7	N 6°51'29" E	4.00'
L8	S 83°08'31" E	10.00'
L9	S 6°51'29" W	4.00'
L10	N 83°08'31" W	5.00'

## **GENERAL NOTES:**

1. NORTH ARROW AND COORDINATES AS SHOWN HEREON ARE BASED ON ALABAMA STATE PLANE COORDINATE SYSTEM EAST ZONE, NAD '83.
2. ALL MEASUREMENTS SHOWN ARE TO U.S. STANDARDS.
3. SOURCES OF INFORMATION: HERITAGE HILLS - PHASE 3 PB L PG 198



DRAWN BY: JCB

FIELD CREW: BJ

FIELD DATE: 12.10.24

OFFICE DATE: 07.11.25

CHECKED BY: ASM

SHEET: 4 OF 10

JOB NO: 21-001

EASEMENT VACATION EXHIBIT

**HERITAGE HILLS PHASE 3**

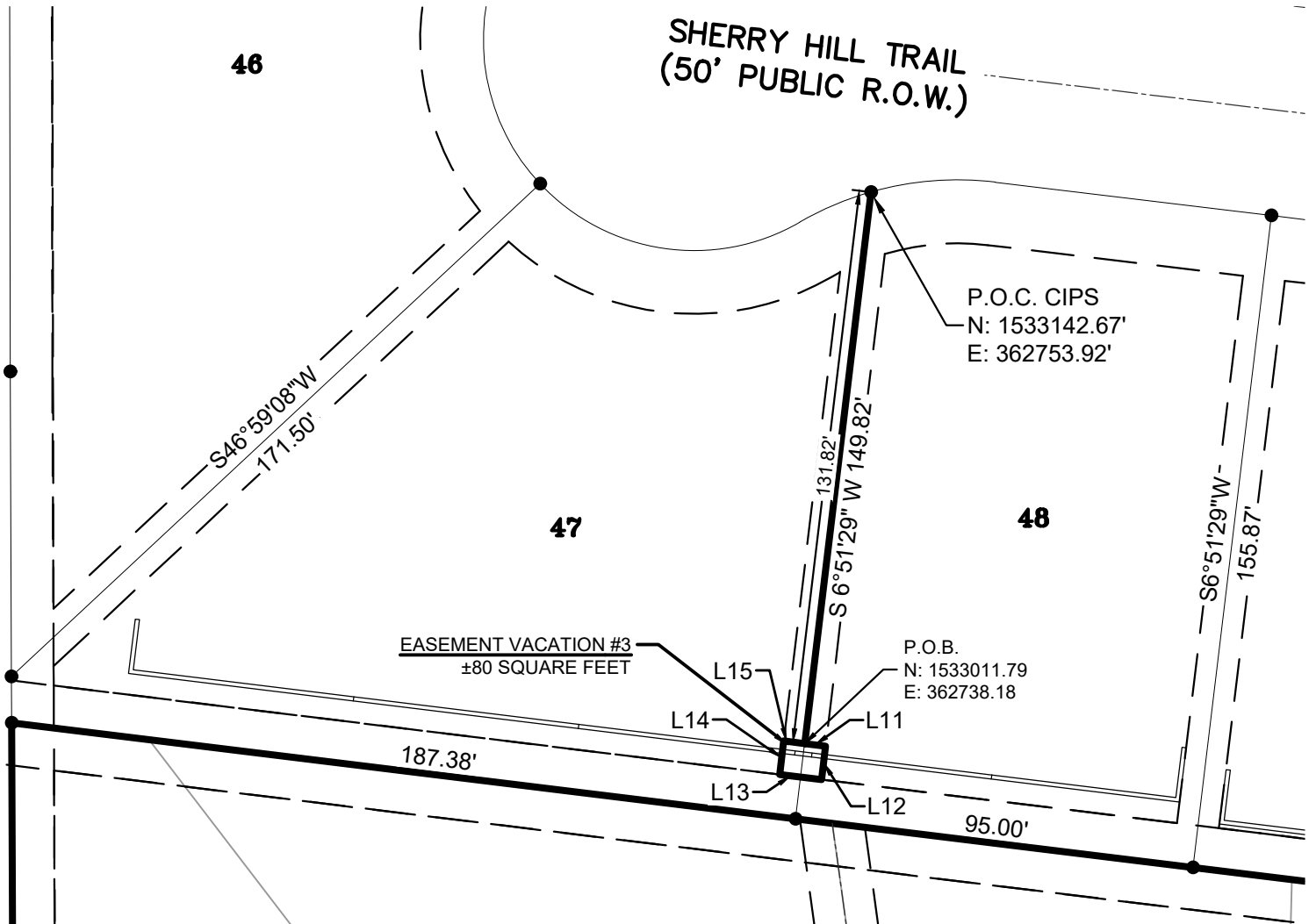
PLAT BOOK L PAGE 198

CITY OF MADISON, ALABAMA

SECTION 11, TOWNSHIP 4 SOUTH, RANGE 3 WEST



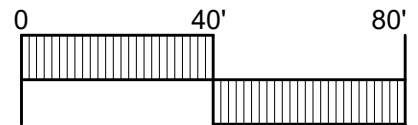
**EXHIBIT 3-B**  
**EASEMENT VACATION LOTS 47 & 48**



LINE TABLE		
NUMBER	DIRECTION	LENGTH
L11	S 83°01'08" E	5.00'
L12	S 6°51'29" W	8.00'
L13	N 83°01'08" W	10.00'
L14	N 6°51'29" E	8.00'
L15	S 83°01'08" E	5.00'

**GENERAL NOTES:**

1. NORTH ARROW AND COORDINATES AS SHOWN HEREON ARE BASED ON ALABAMA STATE PLANE COORDINATE SYSTEM EAST ZONE, NAD '83.
2. ALL MEASUREMENTS SHOWN ARE TO U.S. STANDARDS.
3. SOURCES OF INFORMATION: HERITAGE HILLS - PHASE 3 PB L PG 198



DRAWN BY: JCB

FIELD CREW: BJ

FIELD DATE: 12.10.24

OFFICE DATE: 07.11.25

CHECKED BY: ASM

SHEET: 6 OF 10

JOB NO: 21-001

EASEMENT VACATION EXHIBIT

**HERITAGE HILLS PHASE 3**

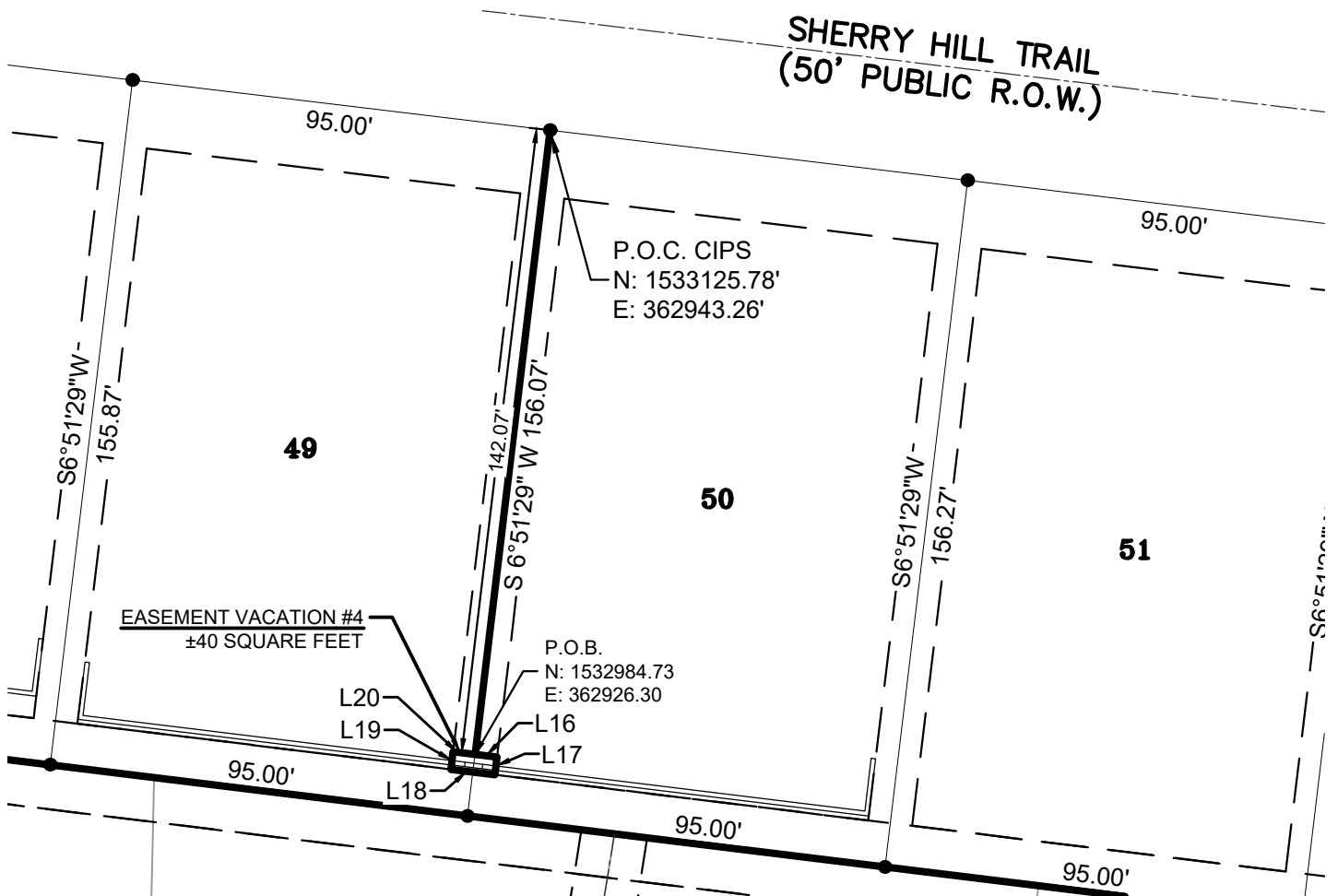
PLAT BOOK L PAGE 198

CITY OF MADISON, ALABAMA

SECTION 11, TOWNSHIP 4 SOUTH, RANGE 3 WEST



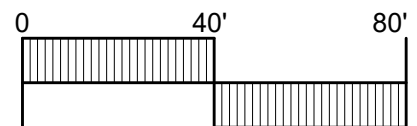
**EXHIBIT 4-B**  
**EASEMENT VACATION LOTS 49 & 50**



**GENERAL NOTES:**

1. NORTH ARROW AND COORDINATES AS SHOWN HEREON ARE BASED ON ALABAMA STATE PLANE COORDINATE SYSTEM EAST ZONE, NAD '83.
2. ALL MEASUREMENTS SHOWN ARE TO U.S. STANDARDS.
3. SOURCES OF INFORMATION: HERITAGE HILLS - PHASE 3 PB L PG 198

LINE TABLE		
NUMBER	DIRECTION	LENGTH
L16	S 83°01'08\" E	5.00'
L17	S 6°51'29\" W	4.00'
L18	N 83°01'08\" W	10.00'
L19	N 6°51'29\" E	4.00'
L20	S 83°01'08\" E	5.00'



DRAWN BY: JCB

FIELD CREW: BJ

FIELD DATE: 12.10.24

OFFICE DATE: 07.11.25

CHECKED BY: ASM

SHEET: 8 OF 10

JOB NO: 21-001

EASEMENT VACATION EXHIBIT

**HERITAGE HILLS PHASE 3**

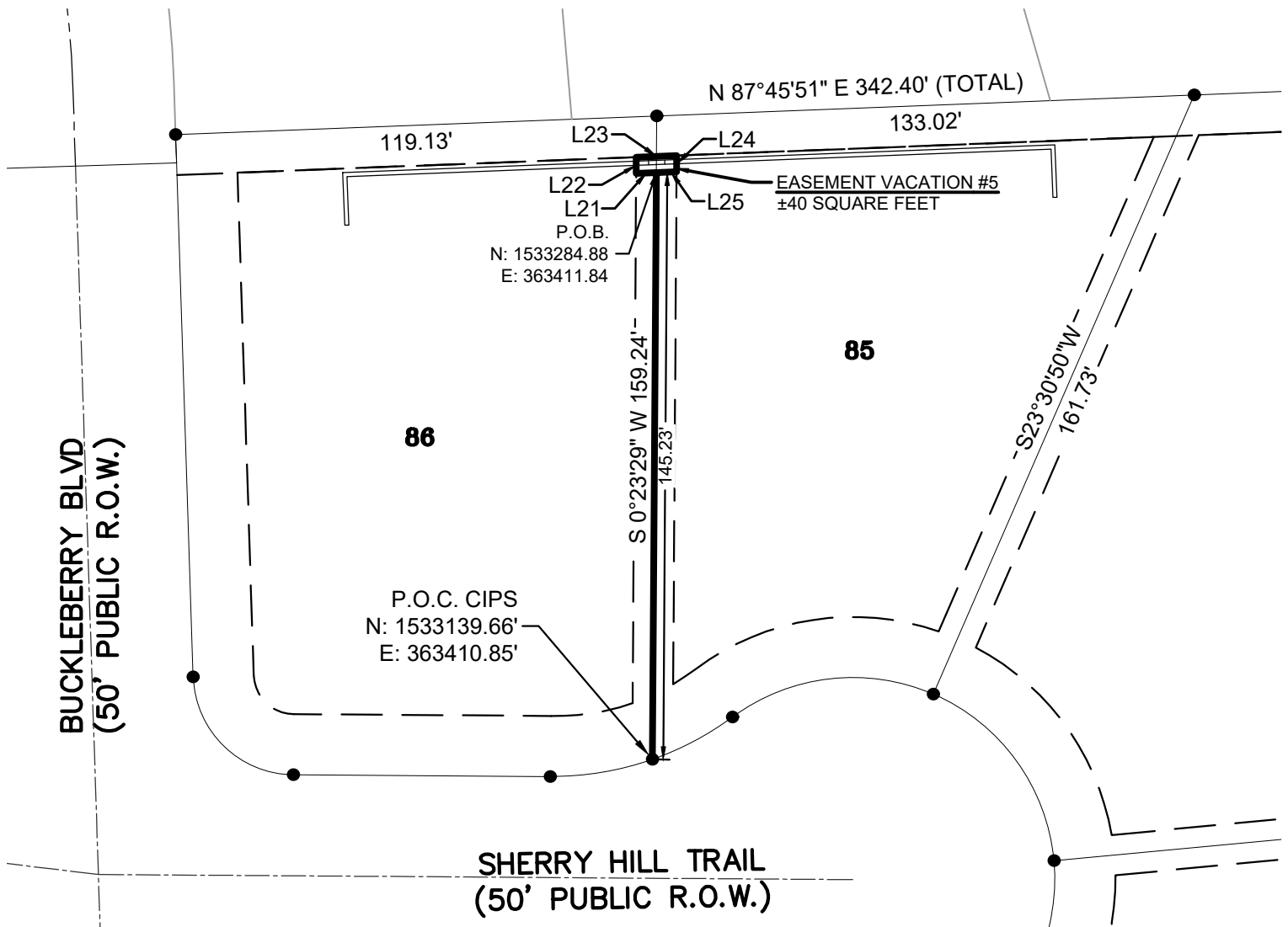
PLAT BOOK L PAGE 198

CITY OF MADISON, ALABAMA

SECTION 11, TOWNSHIP 4 SOUTH, RANGE 3 WEST



**EXHIBIT 5-B**  
**EASEMENT VACATION LOTS 85 & 86**

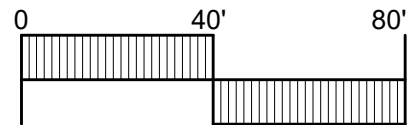


**LINE TABLE**

NUMBER	DIRECTION	LENGTH
L21	S 87°45'51" W	5.01'
L22	N 0°23'29" E	4.00'
L23	N 87°45'51" E	10.01'
L24	S 0°23'29" W	4.00'
L25	S 87°45'51" W	5.01'

**GENERAL NOTES:**

1. NORTH ARROW AND COORDINATES AS SHOWN HEREON ARE BASED ON ALABAMA STATE PLANE COORDINATE SYSTEM EAST ZONE, NAD '83.
2. ALL MEASUREMENTS SHOWN ARE TO U.S. STANDARDS.
3. SOURCES OF INFORMATION: HERITAGE HILLS - PHASE 3 PB L PG 198



DRAWN BY: JCB

FIELD CREW: BJ

FIELD DATE: 12.10.24

OFFICE DATE: 07.11.25

CHECKED BY: ASM

SHEET: 10 OF 10

JOB NO: 21-001

EASEMENT VACATION EXHIBIT

**HERITAGE HILLS PHASE 3**

PLAT BOOK L PAGE 198

CITY OF MADISON, ALABAMA

SECTION 11, TOWNSHIP 4 SOUTH, RANGE 3 WEST

