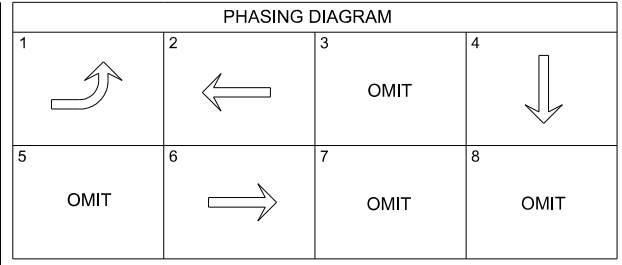
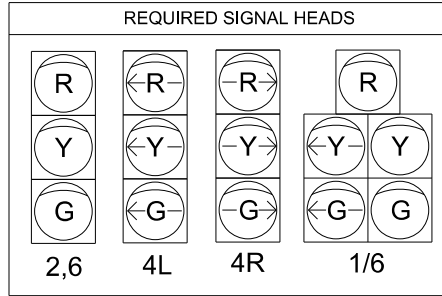


HARDIMAN ROAD AT BURGREEN ROAD

REFERENCE NOTIFICATION NO	FISCAL YEAR	SHEET NO
22-038	2024	7

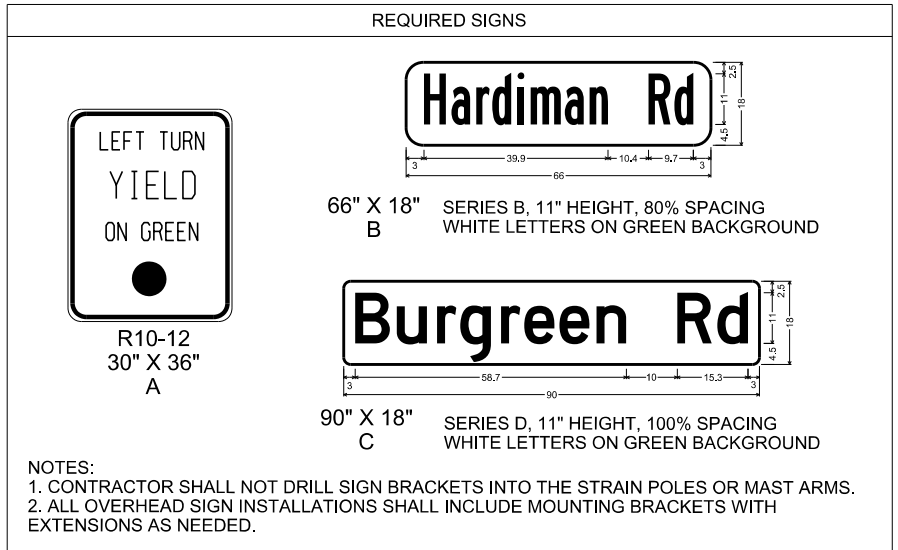


SUPPORTING STRUCTURES

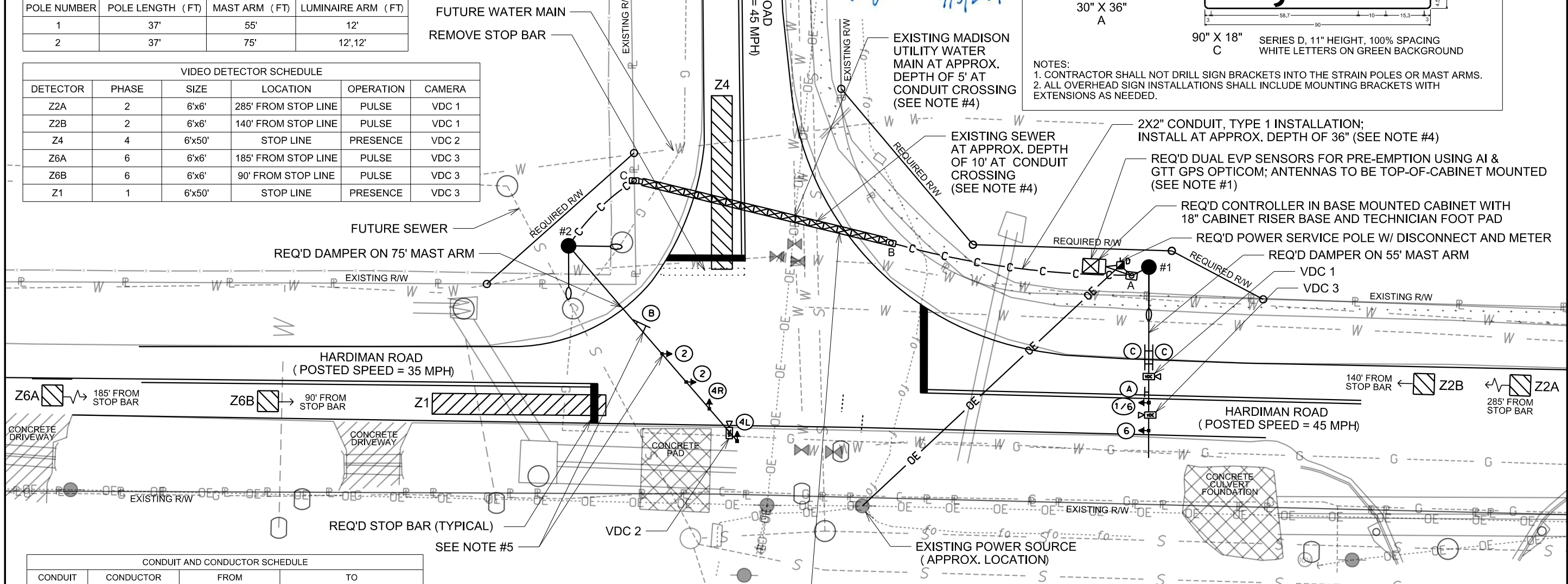
POLE NUMBER	POLE LENGTH (FT)	MAST ARM (FT)	LUMINAIRE ARM (FT)
1	37'	55'	12'
2	37'	75'	12',12'

VIDEO DETECTOR SCHEDULE

DETECTOR	PHASE	SIZE	LOCATION	OPERATION	CAMERA
Z2A	2	6'x6'	285' FROM STOP LINE	PULSE	VDC 1
Z2B	2	6'x6'	140' FROM STOP LINE	PULSE	VDC 1
Z4	4	6'x50'	STOP LINE	PRESENCE	VDC 2
Z6A	6	6'x6'	185' FROM STOP LINE	PULSE	VDC 3
Z6B	6	6'x6'	90' FROM STOP LINE	PULSE	VDC 3
Z1	1	6'x50'	STOP LINE	PRESENCE	VDC 3



NOTES:
 1. CONTRACTOR SHALL NOT DRILL SIGN BRACKETS INTO THE STRAIN POLES OR MAST ARMS.
 2. ALL OVERHEAD SIGN INSTALLATIONS SHALL INCLUDE MOUNTING BRACKETS WITH EXTENSIONS AS NEEDED.



CONDUIT AND CONDUCTOR SCHEDULE

CONDUIT	CONDUCTOR	FROM	TO
1-1"	3-1/C, No. 6 AWG	DISCONNECT	CONTROLLER
1-1"	3-1/C, No. 8 AWG	DISCONNECT	JUNCTION BOX A (LUMINAIRES)
3-2"		CONTROLLER	JUNCTION BOX A
2-2"	3-1/C, No. 8 AWG	JUNCTION BOX A	POLE #1
2-2"	3-1/C, No. 8 AWG	JUNCTION BOX A	JUNCTION BOX B
2-2"	3-1/C, No. 8 AWG	JUNCTION BOX B	JUNCTION BOX C
2-2"	3-1/C, No. 8 AWG	JUNCTION BOX C	POLE #2
	1-7/C, No. 14 AWG	CONTROLLER	SIGNAL HEADS 2,4R
	1-7/C, No. 14 AWG	SIGNAL HEAD 4R	SIGNAL HEAD 4L
	1-7/C, No. 14 AWG	CONTROLLER	SIGNAL HEAD 1/6
	1-7/C, No. 14 AWG	SIGNAL HEAD 1/6	SIGNAL HEAD 6
	CAT 5E	CONTROLLER	VDC 1,2,3

2X2" CONDUIT IN 6" ENCASEMENT, TYPE 5 INSTALLATION; INSTALL AT APPROX. DEPTH OF 84" (SEE NOTE #4)

NOTES:
 1. EVP SENSORS SHALL PROVIDE DUAL PRE-EMPTION USING AI AND GTT GPS OPTICOM. ANTENNAS TO BE MOUNTED ON TOP OF TRAFFIC SIGNAL CABINET. CONTRACTOR TO COORDINATE WITH CITY OF MADISON PRIOR TO ORDERING MATERIALS.
 2. CONTRACTOR TO ENSURE STRAIN POLE HEIGHT/LENGTH IS ADEQUATE TO ACCOUNT FOR ALL SLOPES PRIOR TO ORDERING.
 3. CONTRACTOR SHALL INSTALL DAMPERS ON ALL MAST ARMS 50' OR LONGER AND ALWAYS BE INSTALLED AT OUTSIDE TIP OR AS RECOMMENDED BY MANUFACTURER.
 4. CONTRACTOR IS RESPONSIBLE FOR VERIFYING AND SPOTTING ALL UTILITY LOCATIONS PRIOR TO CONSTRUCTION.
 5. CONTRACTOR TO COORDINATE WITH CITY OF MADISON AND MANUFACTURER PRIOR TO ORDERING MOUNTING BRACKETS FOR ALL OVERHEAD SIGNS AND SIGNAL HEADS ON POLE #2. ALL SIGNS AND SIGNAL HEADS SHOULD BE ANGLED AS CLOSE TO PERPENDICULAR AS POSSIBLE FOR THE ASSOCIATED APPROACHES AS SHOWN ON THE PLAN.

SUGGESTED TIMINGS (ALL TIMES IN SECONDS)

PHASE	MOVEMENT	MIN GREEN	PASSAGE	MAX GREEN	YELLOW	ALL RED	RECALL
1	EBL	4	2.0	20	3.2	2.5	-
2	WBT	20	5.0	60	4.8	1.4	MIN
-	-	-	-	-	-	-	-
4	SBL	6	2.0	40	3.3	2.2	-
-	-	-	-	-	-	-	-
6	EBT	20	5.0	60	4.8	1.4	MIN
-	-	-	-	-	-	-	-
-	-	-	-	-	-	-	-

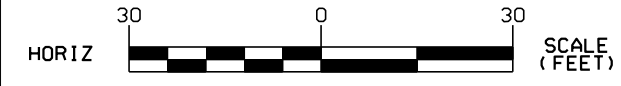
RESPONSIBLE PE: JENNY BROWN, P.E.
 DATE: 07/03/2024

SUPERVISOR:
 DATE:

DESIGNER: LAURA BETH YATES, P.E.
 DATE: 07/03/2024

PLAN SUBMITTAL
 100% PLANS

CITY OF MADISON



SHEET TITLE
 TRAFFIC SIGNAL LAYOUT

ROUTE
 HARDIMAN ROAD