

**811** *Alabama Call*

2400 5th Avenue S, Suite 200  
Birmingham, AL 35233  
T 205.879.4462  
GMCNETWORK.COM  
CA# 6190





DRAWING FILE: T:\Vannoyville\Chun Proj\Madison, City of\CHUN220026 Old Black Bear Brewing Co - Ditch\DWG\C0.2 Summary of Quantities.dwg  
PLOTTED: Mar 02, 2023 - 3:58pm

ITEM	SPEC	DESCRIPTION	PROJECT NOTES	UNIT	TOTAL
1	201A-002	CLEARING AND GRUBBING (MAXIMUM ALLOWABLE BID \$8000 PER ACRE) (APPROXIMATELY 1 ACRE)		LUMP SUM	1
2	206D-000	REMOVING PIPE		LINEAR FOOT	45
3	206D-030	REMOVING UTILITY LINES	SEE NOTE 1	LINEAR FOOT	9
4	206E-000	REMOVING HEADWALLS		EACH	1
5	210A-000	UNCLASSIFIED EXCAVATION	SEE NOTE 2	CUBIC YARD	43
6	210D-000	BORROW EXCAVATION		CUBIC YARD	42
7	214B-001	FOUNDATION BACKFILL, COMMERCIAL	SEE NOTE 3	CUBIC YARD	37
8	533A-099	24" STORM SEWER PIPE (CLASS 3 R.C.)		LINEAR FOOT	210
10	600A-000	MOBILIZATION		LUMP SUM	1
11	610D-003	FILTER BLANKET, GEOTEXTILE	SEE NOTE 4	SQUARE YARD	388
12	619A-032	24" ROADWAY PIPE END TREATMENT, CLASS 1 (TYPE HW-620)		EACH	1
13	620A-000	MINOR STRUCTURE CONCRETE	SEE NOTE 5	CUBIC YARD	1
14	621C-140	INLETS, OPEN THROAT	SEE NOTE 6	EACH	2
15	645A-508	6 INCH DUCTILE IRON SANITARY SEWER GRAVITY PIPE LAID	SEE NOTE 7	LINEAR FOOT	18
16	645G-515	6 INCH SANITARY SEWER LATERAL CLEANOUT		EACH	2
17	645M-500	CONNECTION TO EXISTING MANHOLE		EACH	1
18	650A-000	TOPSOIL		CUBIC YARD	80
19	652A-100	SEEDING	SEE NOTE 8	ACRE	0.2
20	656A-010	MULCHING		ACRE	0.2
21	665A-000	TEMPORARY SEEDING		ACRE	0.2
22	665G-000	SAND BAGS		EACH	6
23	665J-002	SILT FENCE		LINEAR FOOT	40
24	665O-001	SILT FENCE REMOVAL		LINEAR FOOT	40
25	665P-005	INLET PROTECTION, STAGE 3 OR 4	SEE NOTE 9	EACH	2
26	665Q-002	WATTLE		LINEAR FOOT	48
27	680A-001	GEOMETRIC CONTROLS		LUMP SUM	1

NOTES:

1. SEE SHEET C0.3 FOR SANITARY SEWER CLEANOUT REMOVAL. INCLUDES REMOVAL OF ATTACHED SANITARY SEWER CLEANOUT. REMOVAL WILL BE PAID FOR AS A SUBSIDIARY OF PAY ITEM 206D-030.
2. SEE SHEET C0.3 FOR 34 CU YD BRIDGE BEAMS AND WOODEN DECK REMOVAL. REMOVAL WILL BE PAID FOR AS A SUBSIDIARY OF PAY ITEM 210A-000. INCLUDES REMOVAL OF EXCESS SOIL.
3. SEE SHEET C4.0 FOR PIPE BEDDING DETAIL. 1 CU YD ALLOCATED FOR SEWER PIPE. 37 CU YD ALLOCATED FOR STORM PIPE.
4. SEE SHEET C4.0 FOR 368 SQ YD ALLOCATED FOR STORM PIPE BEDDING, 12 SQ YD ALLOCATED FOR SEWER PIPE BEDDING, AND 90 SQ YD ALLOCATED FOR TEMPORARY CONSTRUCTION ENTRANCE.
5. SEE SHEET C1.0 FOR CONCRETE ENCASEMENTS FOR SANITARY SEWER PIPE. CONCRETE WILL BE PAID FOR AS A SUBSIDIARY OF PAY ITEM 620A-000.
6. SEE SHEET C4.0 FOR OPEN THROAT INLET DETAIL. MODIFIED OPEN THROAT INLET @ STA: 2+10.09 WILL BE PAID FOR AS A SUBSIDIARY OF PAY ITEM 621C-140.
7. SEE SHEET C0.3 FOR STORM SEWER PIPE RELOCATION. CONTRACTOR TO FIELD VERIFY PIPE SIZE AND TYPE. MAKE CHANGES AS NECESSARY. CONTRACTOR TO COORDINATE INSPECTION WITH MADISON UTILITIES TO INSPECT THE LATERAL PLACEMENT AND ENCASEMENT OF THE SEWER LINES.
8. SEE SHEET C0.1 FOR SEEDING NOTES AND C2.0 FOR LOCATION. HYDROSEED TO BE USED AND PAID FOR AS A SUBSIDARY OF PAY ITEM 652A-100.
9. SEE SHEET C3.0 FOR INLET PROTECTION. FABRIC DROP INLET PROTECTION AND HDPE INLET FILTER TO BE PAID FOR AS A SUBSIDIARY OF PAY ITEM 665P-005.

SUMMARY OF  
QUANTITIES

C0.2  
Sheet 3 of 8



3-2-2023

DOWNTOWN DITCH  
DRAINAGE IMPROVEMENT  
MADISON, AL

PROJ # 22-019  
GMC CHUN220026

ISSUE DATE

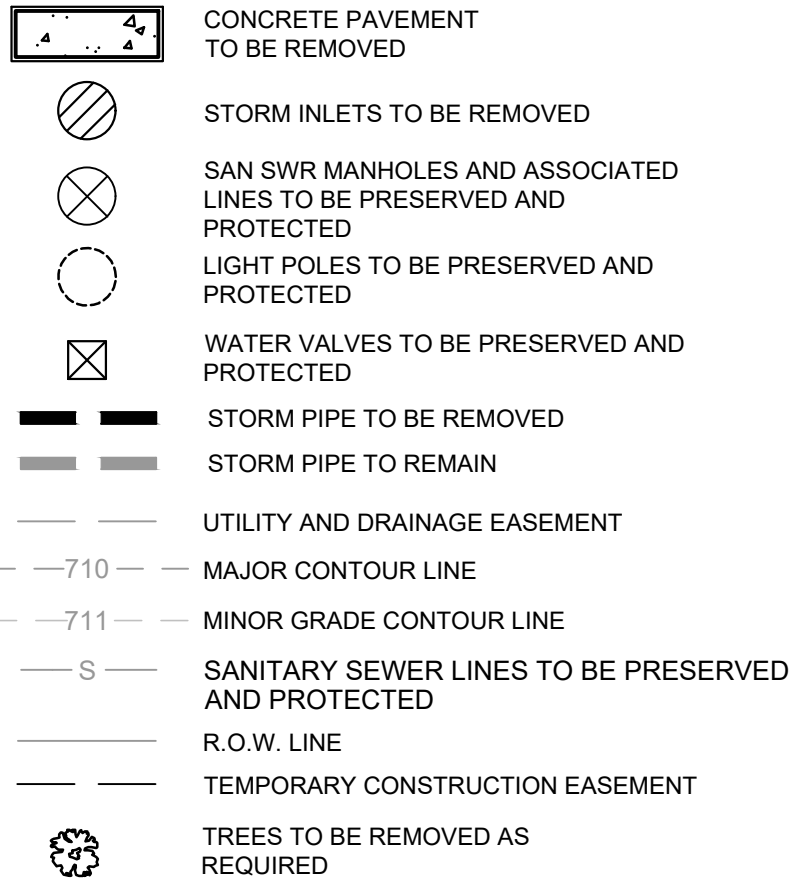
CONSTRUCTION DOCUMENTS 03/02/2023

DRAWN BY:  
CHECKED BY:

2400 5th Avenue S, Suite 200  
Birmingham, AL 35233  
T 205.879.4462  
GMCNETWORK.COM  
CA# 6990

GMC





1. THE CONTRACTOR SHALL BE RESPONSIBLE FOR FIELD VERIFICATION OF THE LOCATION OF ALL UTILITIES IN ALL AREAS TO BE REMOVED OR DEMOLISHED, PRIOR TO COMMENCEMENT OF WORK. THE UTILITIES TO BE LOCATED SHALL INCLUDE, BUT NOT BE LIMITED TO WATER, GAS, SANITARY SEWER, STORM SEWER, SITE LIGHTING, IRRIGATION, SECURITY, CABLE, SITE ELECTRICAL, FIBER OPTIC, AND TELEPHONE.
2. ALL UTILITIES TO BE REMOVED SHALL BE CUT, REMOVED, CAPPED, ETC. ACCORDING TO ALL GOVERNING AGENCIES SPECIFICATIONS. THE CONTRACTOR SHALL BE RESPONSIBLE FOR CONTACTING ALL UTILITY AGENCIES PRIOR TO ANY WORK BEING PERFORMED ON THEIR RESPECTIVE LINES. THE CONTRACTOR SHALL BE RESPONSIBLE FOR NOTIFYING AND INFORMING EACH UTILITY AGENCY OF THE SCOPE OF WORK AND SCHEDULE OF COMPLETION, AND SHALL COORDINATE ALL INSPECTIONS.
3. THE CONTRACTOR SHALL VERIFY ALL UTILITY LOCATIONS IN THE FIELD AND SHALL LOCATE ON THE GROUND WITH PAINT OR OTHER EASILY VISIBLE MEANS ALL UNDERGROUND UTILITIES PRIOR TO ANY CONSTRUCTION EFFORTS. THE UTILITIES TO BE LOCATED SHALL INCLUDE, BUT NOT BE LIMITED TO WATER, GAS, SANITARY SEWER, STORM SEWER, SITE LIGHTING, IRRIGATION, SECURITY, CABLE, SITE ELECTRICAL, AND TELEPHONE. CONFLICTS OR DISCREPANCIES SHALL BE BROUGHT TO THE ATTENTION OF THE PROJECT ENGINEER IMMEDIATELY. THE UTILITIES SHOWN ARE ILLUSTRATED AS LOCATED ON THE GROUND BY LINE LOCATORS, SURVEY OF ABOVE GROUND STRUCTURES, AND/OR ACCORDING TO UTILITY MAPS OR UTILITY ADMINISTRATOR'S RECOLLECTION, AND ARE PROVIDED AS INFORMATION ONLY.
4. THE CONTRACTOR SHALL PRESERVE AND PROTECT, ACCORDING TO THE INSTRUCTIONS OF THE UTILITY INVOLVED, ANY "LIVE" UTILITIES LOCATED BY THE UTILITY COMPANY OR THE CONTRACTOR.
5. DEMOLITION ITEMS SHOWN ARE CONSIDERED TO BE A MINIMUM. UNDERGROUND UNMARKED UTILITIES SHOULD BE REMOVED AND BACKFILLED WITH PROPERLY COMPACTED MATERIAL. THESE UTILITIES MAY INCLUDE, BUT NOT LIMITED TO SANITARY SEWER LATERALS, TELEPHONE LINES, CABLE LINES, GAS LINES, WATER LINES, ETC.
6. THE CONTRACTOR SHALL BE RESPONSIBLE FOR THE REPLACEMENT OF ALL CONCRETE, SIDEWALKS, WALLS, ETC. DAMAGED DURING CONSTRUCTION. ALL DISTURBED AREAS SHALL BE RESTORED TO THE ORIGINAL CONDITION OR AS ACCEPTED BY THE OWNER.

P.O.C. POINT OF COMMENCEMENT  
P.O.B. POINT OF BEGINNING  
(A) ACTUAL  
(R) RECORD DEED  
(P) PLAT OF RECORD  
(C) COMPUTED  
OTIF OPEN TOP IRON PIPE FOUND  
IFF IRON PIN FOUND  
CTIF CRIMP TOP IRON PIPE FOUND  
CRIF CRAPPED REBAR FOUND  
RBF REBAR FOUND  
CRS 5/8" CAPPED REBAR SET STAMPED CA#156  
CMF CONCRETE MONUMENT FOUND  
CMS CONCRETE MONUMENT SET  
LS# LICENSED PROFESSIONAL SURVEYOR'S NUMBER  
CM# CERTIFICATE OF AUTHORIZATION NUMBER  
(DET) DISTURBED  
(RIF) REIFIED CORNER SET ON LINE  
L#ND LINE-ABLE  
INST # INSTRUMENT NUMBER  
SECT. SECTION  
T- TOWNSHIP  
R- RANGE  
-O- POWER POLE  
— GUY WIRE  
R/W- RIGHT-OF-WAY  
R.O.W- RIGHT-OF-WAY  
F- FIRE HYDRANT  
○ SIGN  
[ ] TELEPHONE PEDESTAL  
[ ] ELECTRIC METER BOX  
[ ] AIR CONDITIONER  
[ ] JUNCTION BOX (VAULT)  
EL./ELEV ELEVATION  
INV INVERT

**\*NOTE:**  
ALL CORNERS ARE "CRS" UNLESS OTHERWISE STATED.  
TREE SYMBOL SIZE IS AN APPROXIMATION OF THE DRIP LINE  
AREA FOR THE TREE, COMPUTED AS 2 X'S TREE DIAMETER IN  
FEET. (EXAMPLE: 20" TREE = 40' DRIP LINE)

	TELEPHONE BOX (VAULT)
	WATER METER
	SANITARY SEWER (VAULT)
	WATER VALVE
	GAS VALVE
	TRANSFORMER BOX
	LIGHT POLE
	CABLE TV BOX
	ELECTRIC BOX
	ELECTRIC PANEL
	IRRIGATION CONTROL VALVE
	SANITARY MANHOLE
	STORM DRAIN MANHOLE
	TELEPHONE MANHOLE
	SEWER CLEANOUT
	SEWER GRINDER PUMP
	GREASE TRAP
	FLAG POLE
	GAS LINE SIGN MARKER
	TELEPHONE SIGN MARKER
	SANITARY MANHOLE MARKER
	FIBER OPTIC LINE MARKER
(EX.)	EXCEPTION
FO—	OVERHEAD FIBER OPTIC CABLE
H—	OVERHEAD ELECTRIC
B—	BURIED ELECTRIC LINE
UT—	UNDERGROUND TELEPHONE LINE
S—	UNDERGROUND SEWER LINE
W—	UNDERGROUND WATERLINE
U—	UNDERGROUND GAS LINE
T—	UNDERGROUND TELEVISION
##	SPOT GRADE ELEVATIONS
RCP	CORRUGATED METAL PIPE
MCP	REINFORCED CONCRETE PIPE
OP	CORRUGATED PLASTIC PIPE
<b>CONCRETE</b>	
	ASPHALT
	BUILDING
	GRAVEL

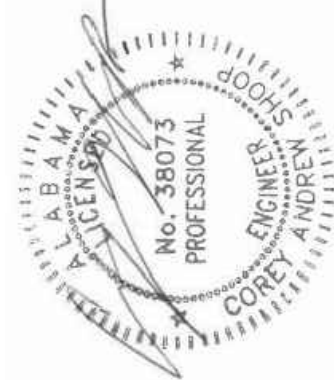
GNM

2400 5th Avenue S, Suite 200  
Birmingham, AL 35233  
T 205.879.4462  
GMCNETWORK.COM  
CA# 6190

ISSUE DATE	
CONSTRUCTION DOCUMENTS	03/02/2023
DRAWN BY:	
CHECKED BY:	

**DOWNTOWN DITCH  
DRAINAGE IMPROVEMENT**  
VADISON, AL

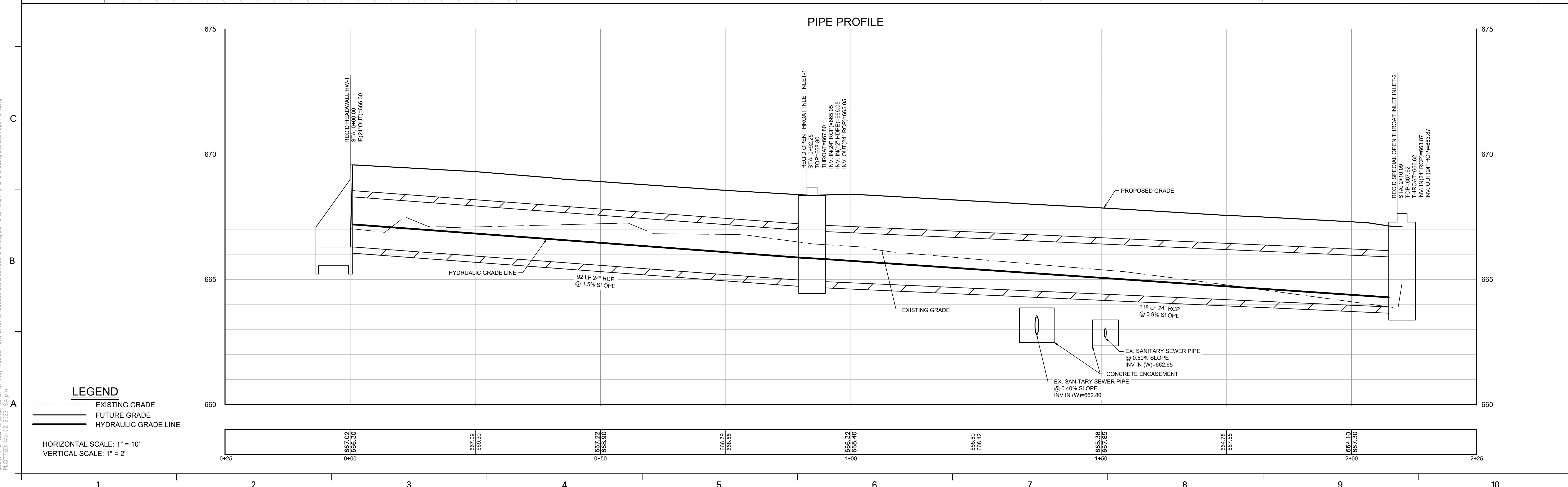
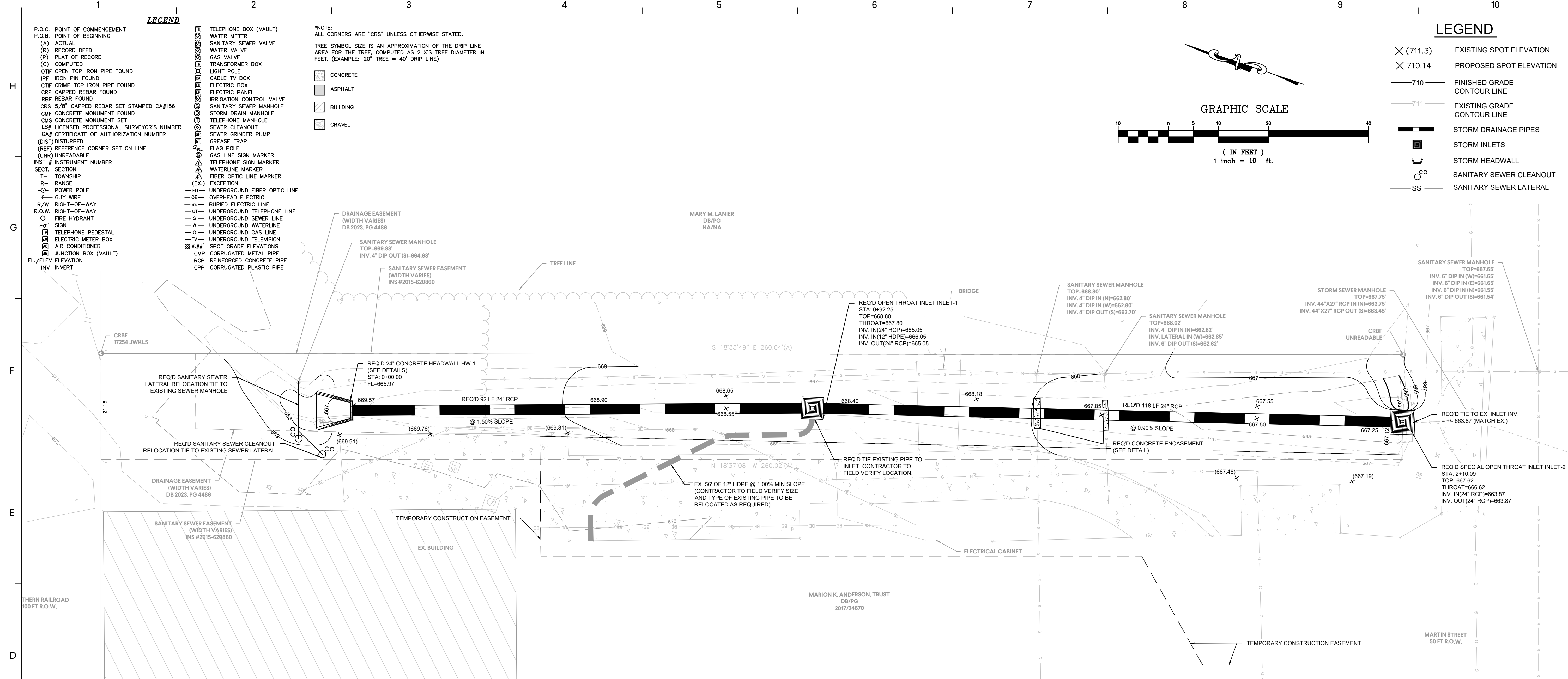
**PROJ # 22-019**  
**GMC CHUN220026**



3-2-2023

## EXISTING CONDITIONS AND DEMOLITION PLAN

C0.3  
sheet 4 of 8



**LEGEND**

P.O.C. POINT OF COMMENCEMENT  
P.O.B. POINT OF BEGINNING  
(A) ACTUAL  
(R) RECORD DEED  
(P) PLAT OF RECORD  
(C) COMPUTED  
OTIF OPEN TOP IRON PIPE FOUND  
IPF IRON PIN FOUND  
CTIF CRIMP TOP IRON PIPE FOUND  
CRF CAPPED REBAR FOUND  
RBF REBAR FOUND  
CRS 5/8" CAPPED REBAR SET STAMPED CA#156  
CMP CONCRETE MONUMENT FOUND  
CMS CONCRETE MONUMENT SET  
LS# LICENSED PROFESSIONAL SURVEYOR'S NUMBER  
CA# CERTIFICATE OF AUTHORIZATION NUMBER  
(DIST) DISTURBED  
(REF) REFERENCE CORNER SET ON LINE  
(UNR) UNREADABLE  
INST # INSTRUMENT NUMBER  
SECT. SECTION  
T- TOWNSHIP  
R- RANGE  
PO- POWER POLE  
G- GUY WIRE  
R/W RIGHT-OF-WAY  
R.O.W. RIGHT-OF-WAY  
F- FIRE HYDRANT  
SIGN  
TELEPHONE PEDESTAL  
ELECTRIC METER BOX  
AIR CONDITIONER  
JUNCTION BOX (VAULT)  
EL/ELEV ELEVATION  
INV INVERT

TELEPHONE BOX (VAULT)  
WATER METER  
SANITARY SEWER VALVE  
WATER VALVE  
GAS VALVE  
TRANSFORMER BOX  
LIGHT POLE  
CABLE TV BOX  
ELECTRIC BOX  
ELECTRIC PANEL  
IRRIGATION CONTROL VALVE  
SANITARY SEWER MANHOLE  
STORM DRAIN MANHOLE  
TELEPHONE MANHOLE  
SEWER CLEANOUT  
SEWER GRINDER PUMP  
GREASE TRAP  
FLAG POLE  
GAS LINE SIGN MARKER  
TELEPHONE SIGN MARKER  
WATERLINE MARKER  
FIBER OPTIC LINE MARKER  
(EX.) EXCEPTION  
FO- UNDERGROUND FIBER OPTIC LINE  
OE- OVERHEAD ELECTRIC  
BE- BURIED ELECTRIC LINE  
UT- UNDERGROUND TELEPHONE LINE  
S- UNDERGROUND SEWER LINE  
W- UNDERGROUND WATERLINE  
G- UNDERGROUND GAS LINE  
TV- UNDERGROUND TELEVISION  
SP- SPOT GRADE ELEVATIONS  
CMP CORRUGATED METAL PIPE  
RCP REINFORCED CONCRETE PIPE  
CPP CORRUGATED PLASTIC PIPE

**\*NOTE:**  
ALL CORNERS ARE "CRS" UNLESS OTHERWISE STATED.  
TREE SYMBOL SIZE IS AN APPROXIMATION OF THE DRIP LINE  
AREA FOR THE TREE, COMPUTED AS 2 X'S TREE DIAMETER IN  
FEET. (EXAMPLE: 20" TREE = 40' DRIP LINE)

CONCRETE  
ASPHALT  
BUILDING  
GRAVEL

**LEGEND**

X (711.3) EXISTING SPOT ELEVATION  
X 710.14 PROPOSED SPOT ELEVATION  
—710— FINISHED GRADE  
—711— EXISTING GRADE  
—711— CONTOUR LINE  
STORM DRAINAGE PIPES  
STORM INLETS  
STORM HEADWALL  
SANITARY SEWER CLEANOUT  
SS SANITARY SEWER LATERAL

**GRAPHIC SCALE**  
( IN FEET )  
1 inch = 10 ft.

**GRADING AND DRAINAGE PLAN**

**C1.0**  
Sheet 5 of 8

**DOWNTOWN DITCH DRAINAGE IMPROVEMENT**  
MADISON, AL

**PROJ # 22-019**  
**GMC CHUN220026**

**ISSUE DATE**  
CONSTRUCTION DOCUMENTS 03/07/2023

**DRAWN BY:**  
**CHECKED BY:**

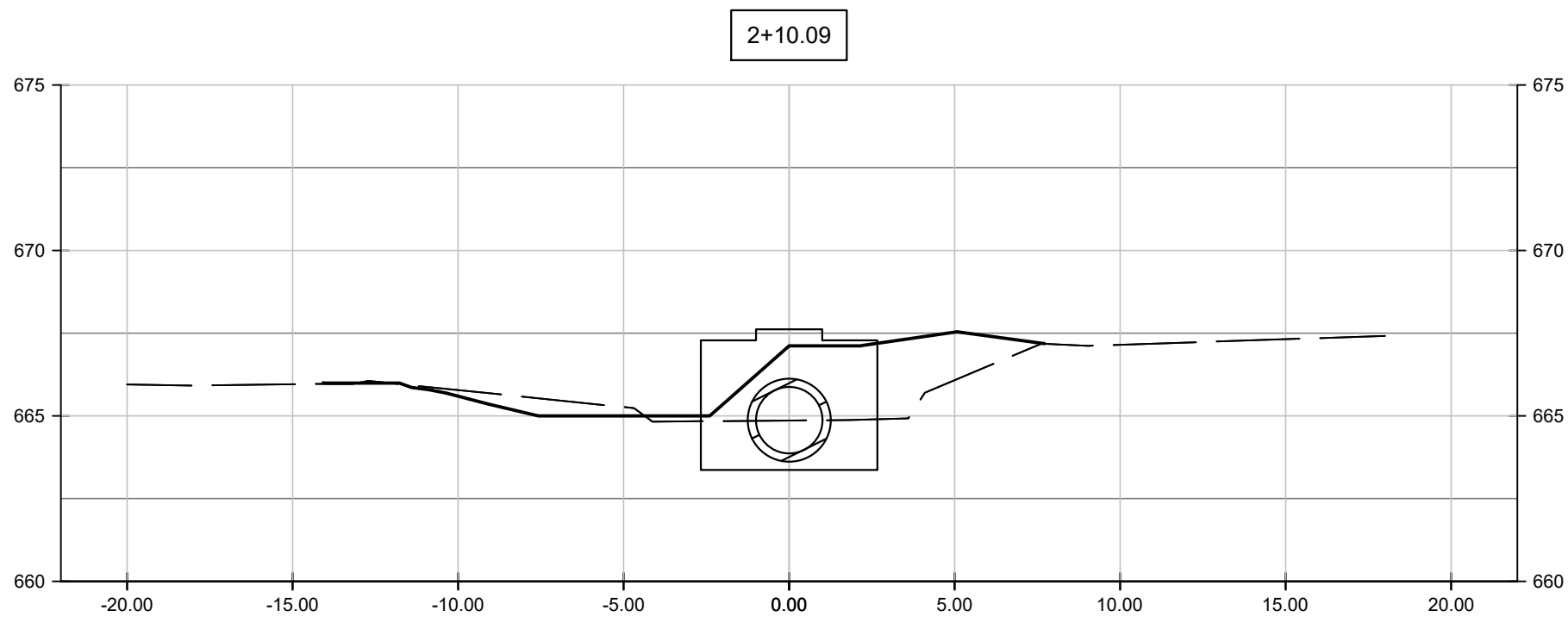
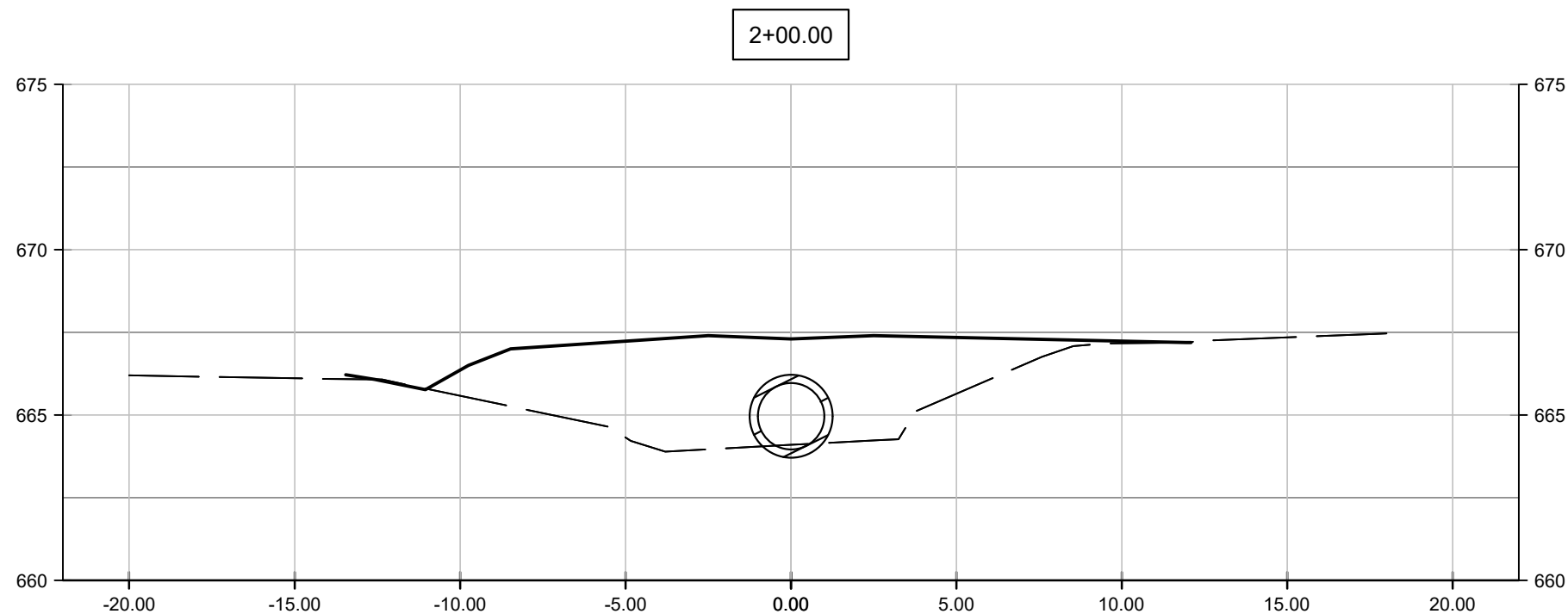
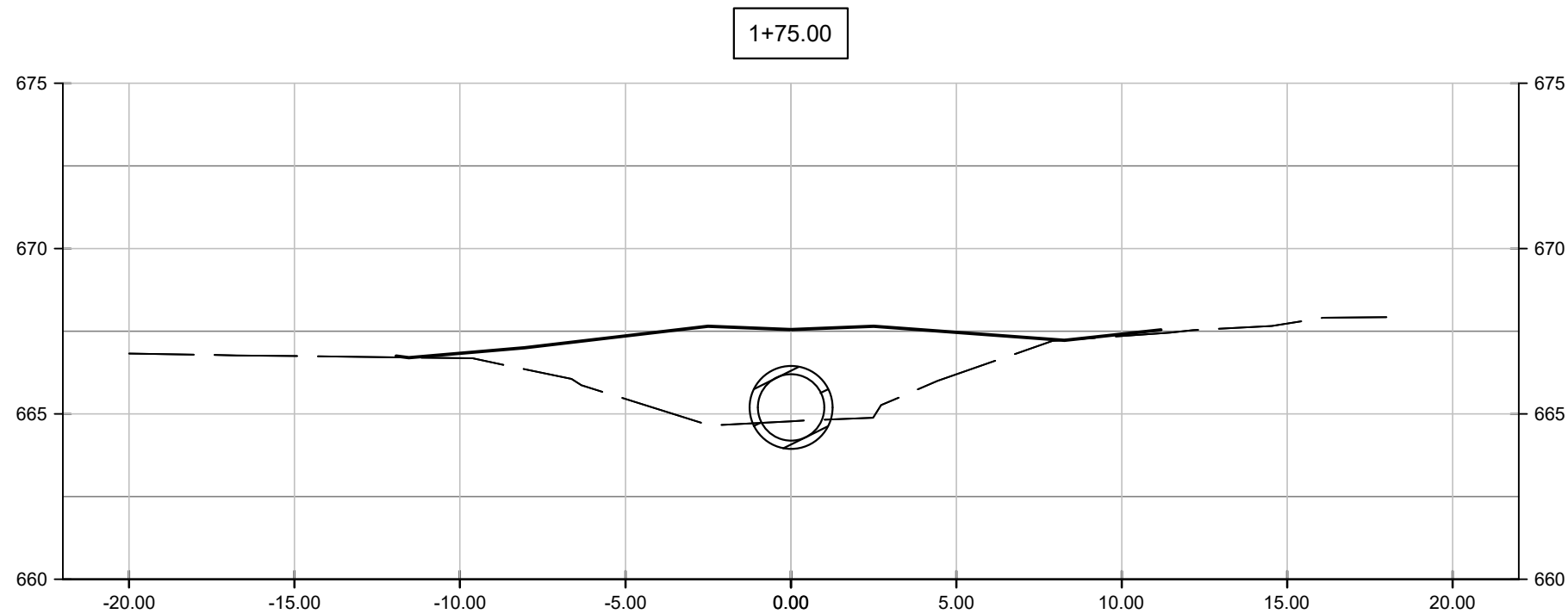
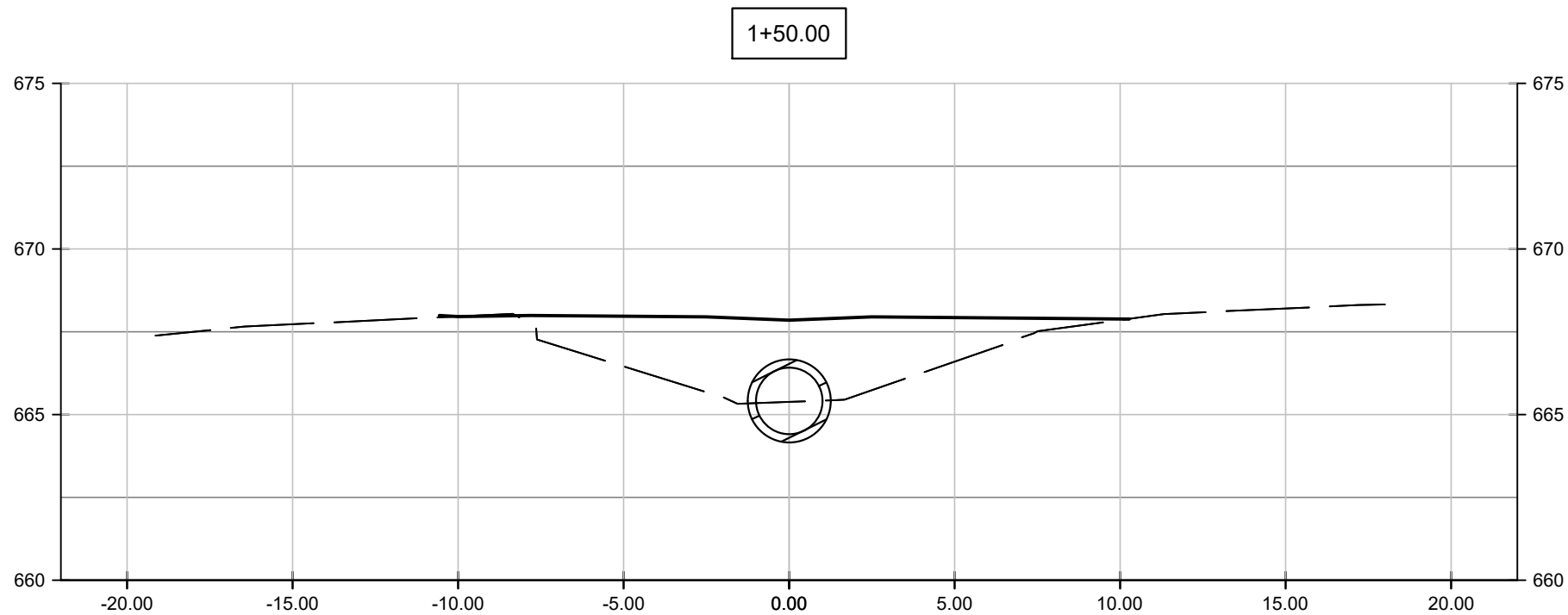
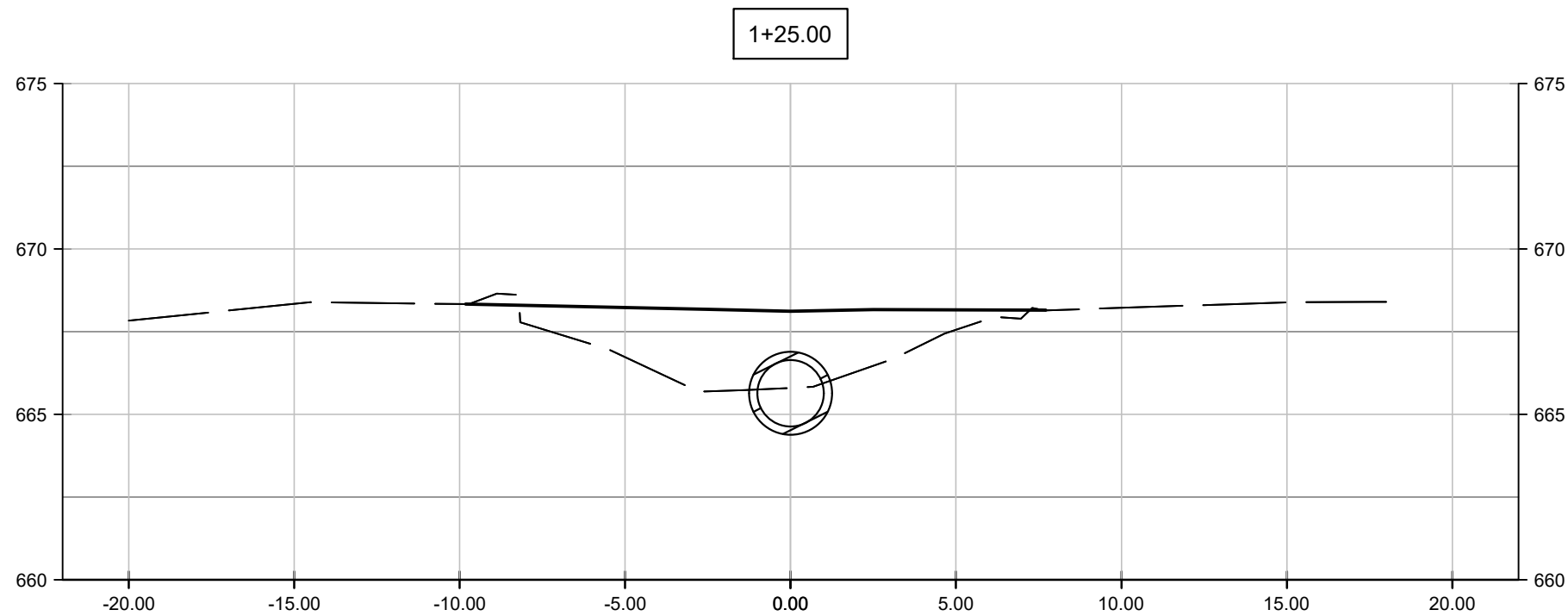
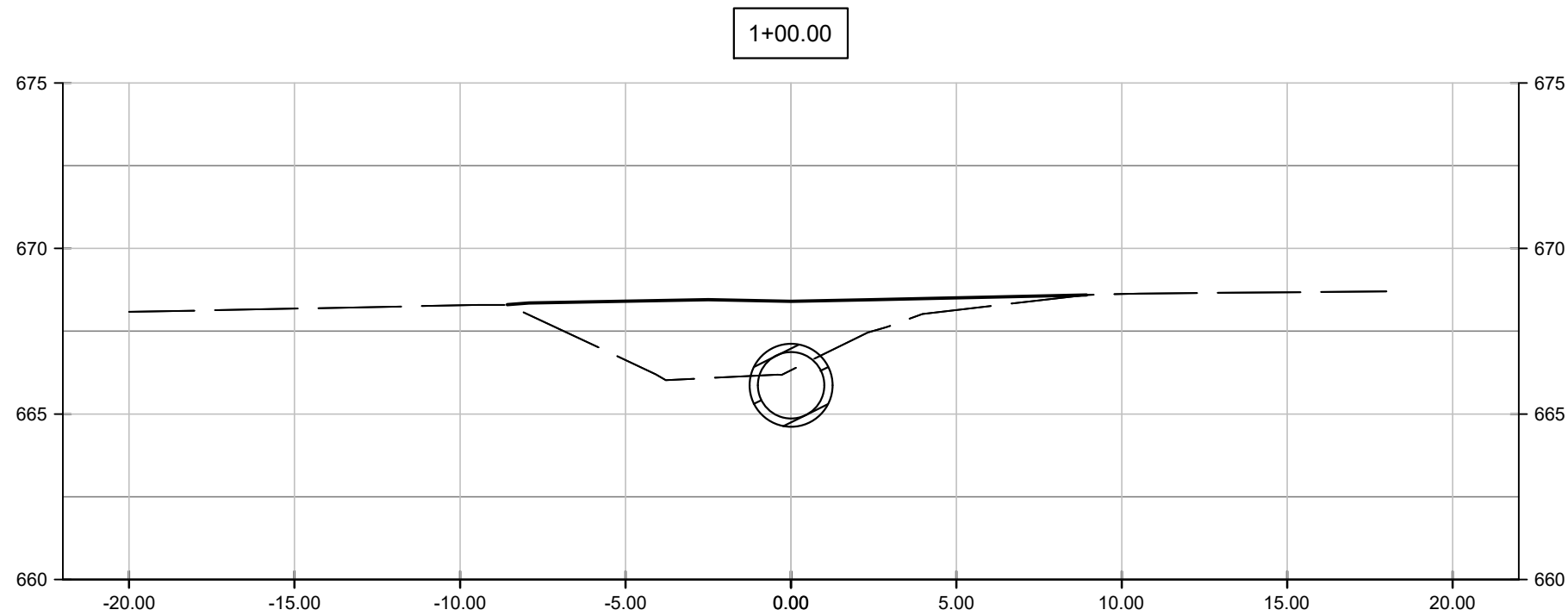
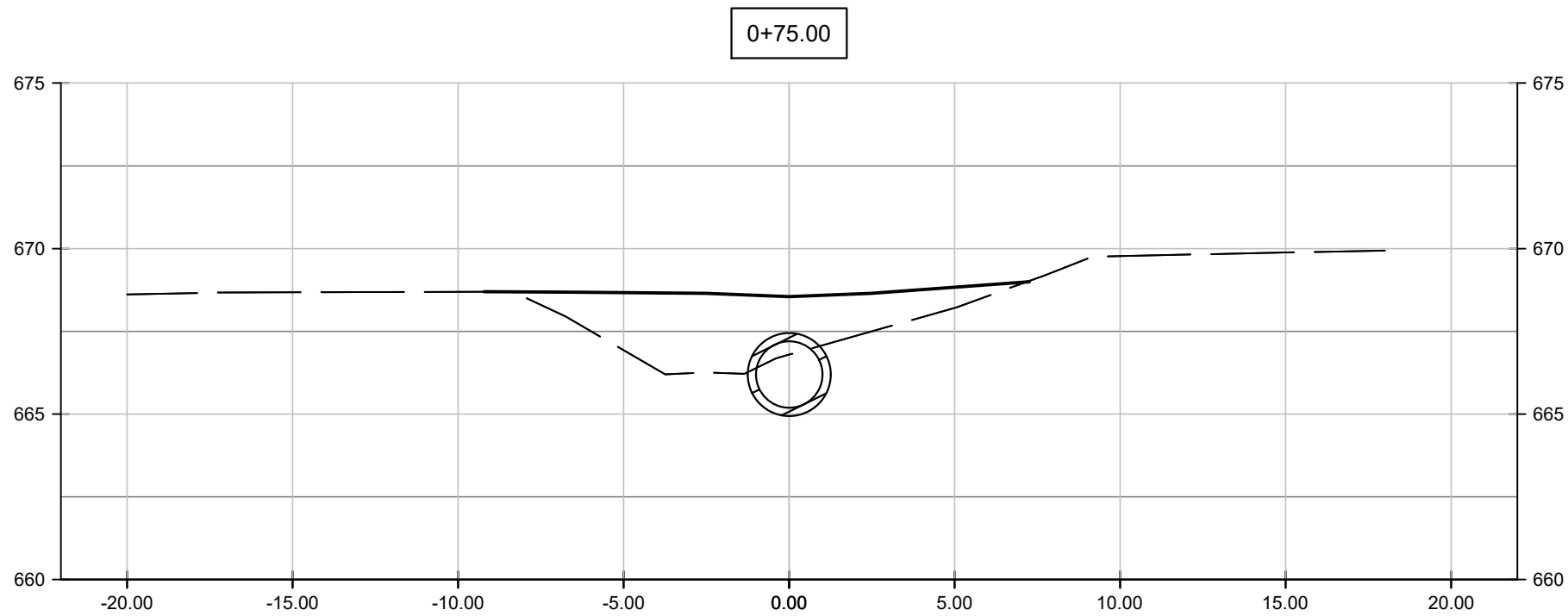
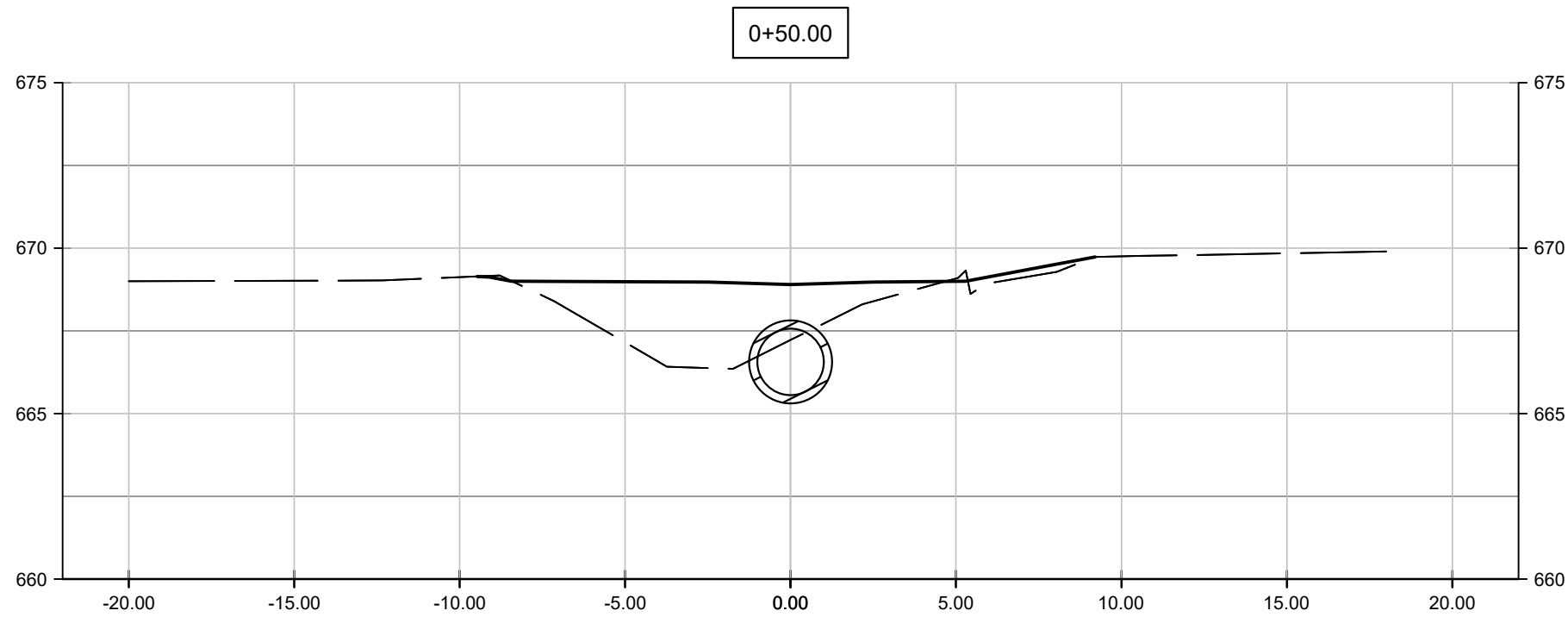
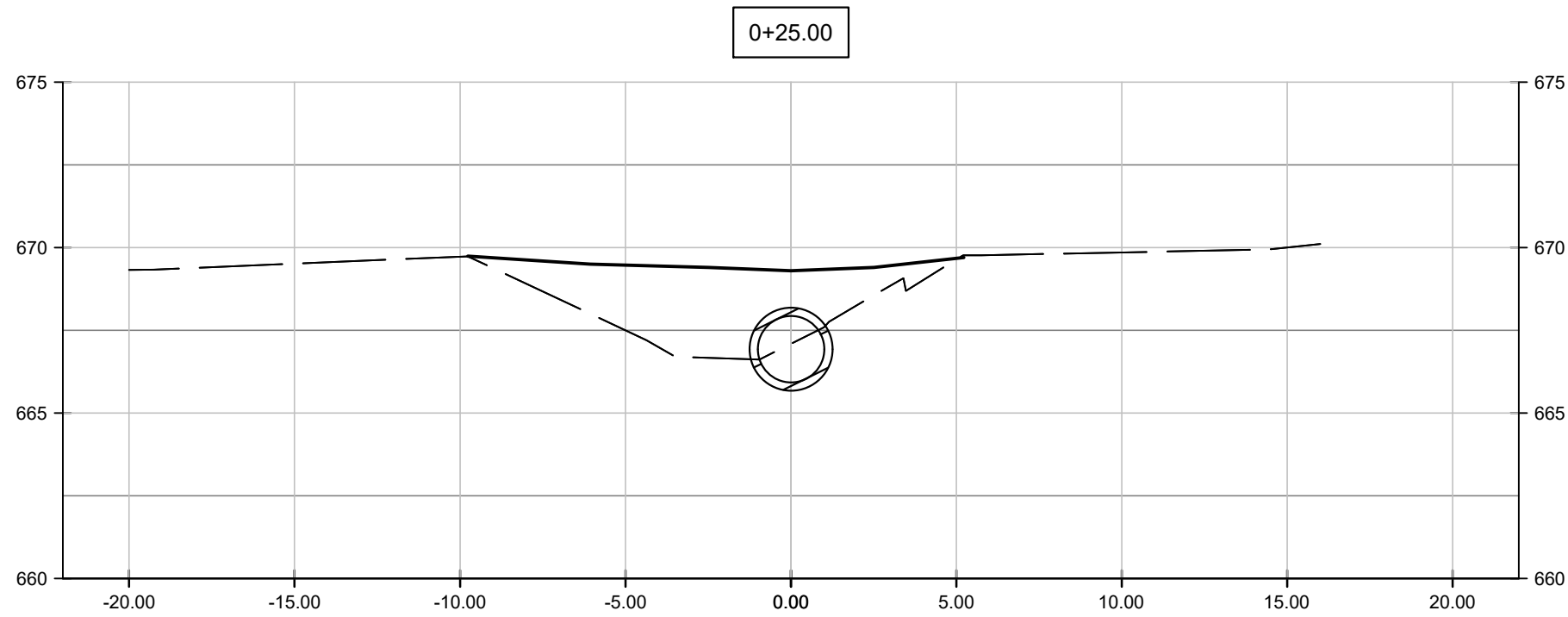
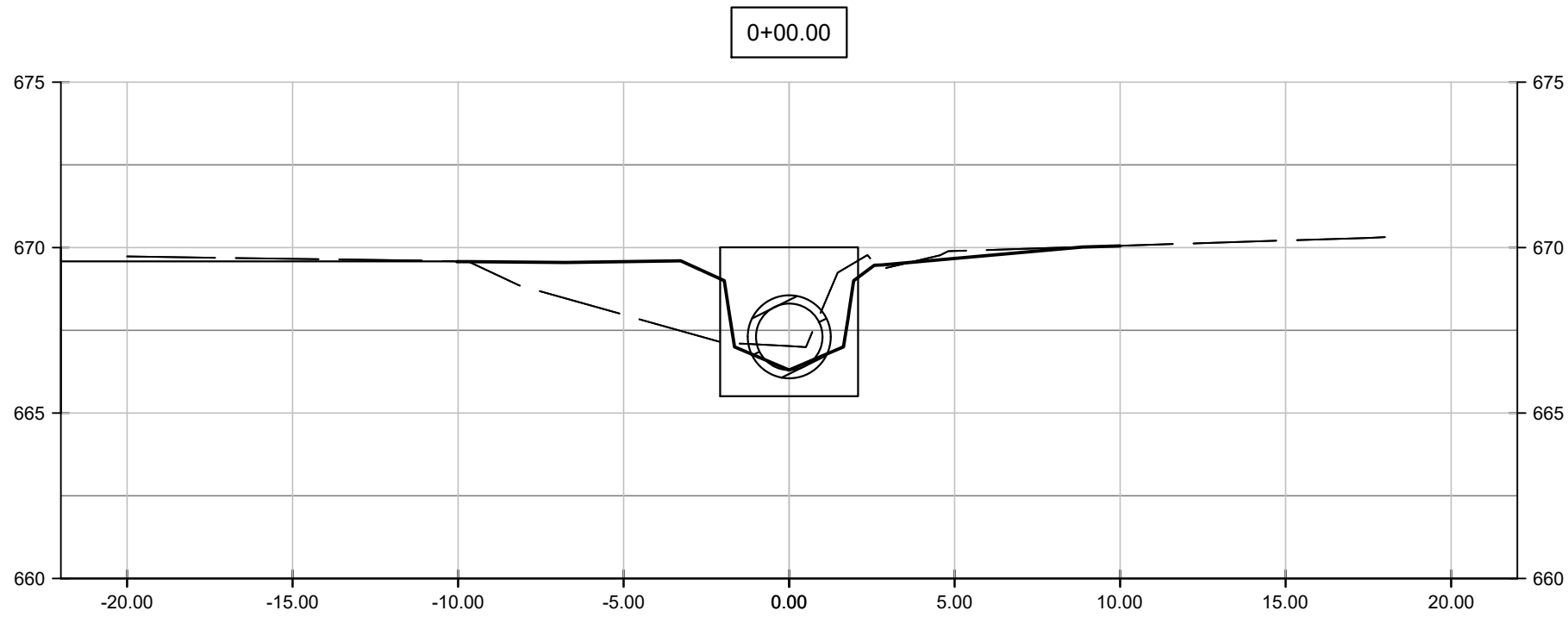
**GMC**

2400 5th Avenue S, Suite 200  
Birmingham, AL 35233  
T 205.879.4462  
GMCNETWORK.COM  
CA# 690

H  
G  
F  
E  
D  
C  
B  
A

DRAWING FILE: T:\Huntsville\CHUN Proj\Madison, City of\CHUN20026 Old Black Bear Brewing Co - Ditch\DWG\CID Grading and Drainage Plan.dwg  
PLOTTED: Mar 02, 2023 11:45am

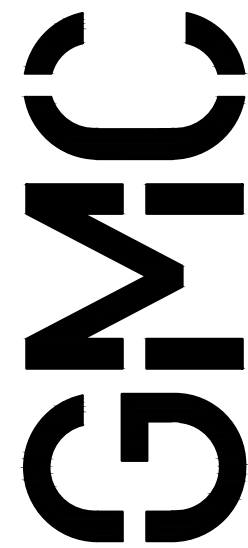
PIPE SECTIONS



LEGEND

— EXISTING GRADE  
— FUTURE GRADE

HORIZONTAL SCALE: 1" = 5'  
VERTICAL SCALE: 1" = 5'



2400 5th Avenue S, Suite 200  
Birmingham, AL 35233  
T 205.879.4462  
GMCNETWORK.COM  
CA# 6890

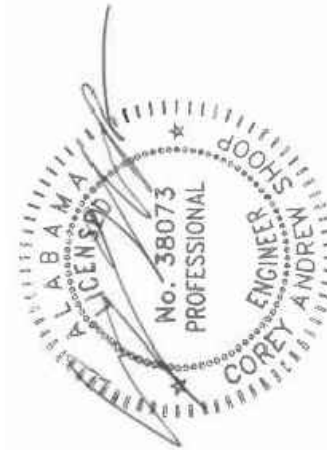
ISSUE DATE

CONSTRUCTION DOCUMENTS 03/02/2023

DRAWN BY:  
CHECKED BY:

DOWNTOWN DITCH  
DRAINAGE IMPROVEMENT  
MADISON, AL

PROJ # 22-019  
GMC-CHUN220026

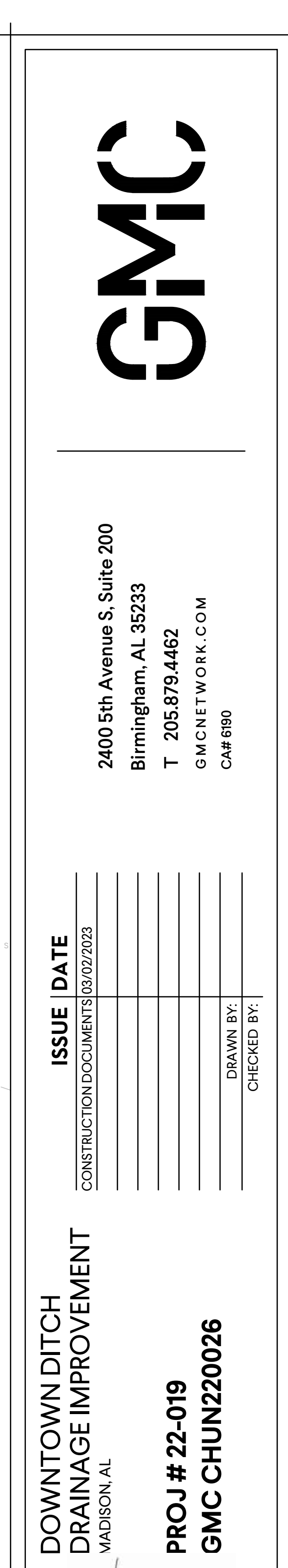


3-2-2023

GRADING AND  
DRAINAGE PLAN

C1.1  
Sheet 6 of 8





C2.0  
sheet 7 of 8

3-2-2023



DRAWING FILE: T:\municipal\chun\proj\madsn\City of CHUN20026 Old Black Bear Brewing Co - Detail\DWG\C3.0 Details.dwg  
PLOTTED: Mar 02, 2023 1:55pm

H  
G  
F  
E  
D  
C  
B  
A

1

2

3

4

5

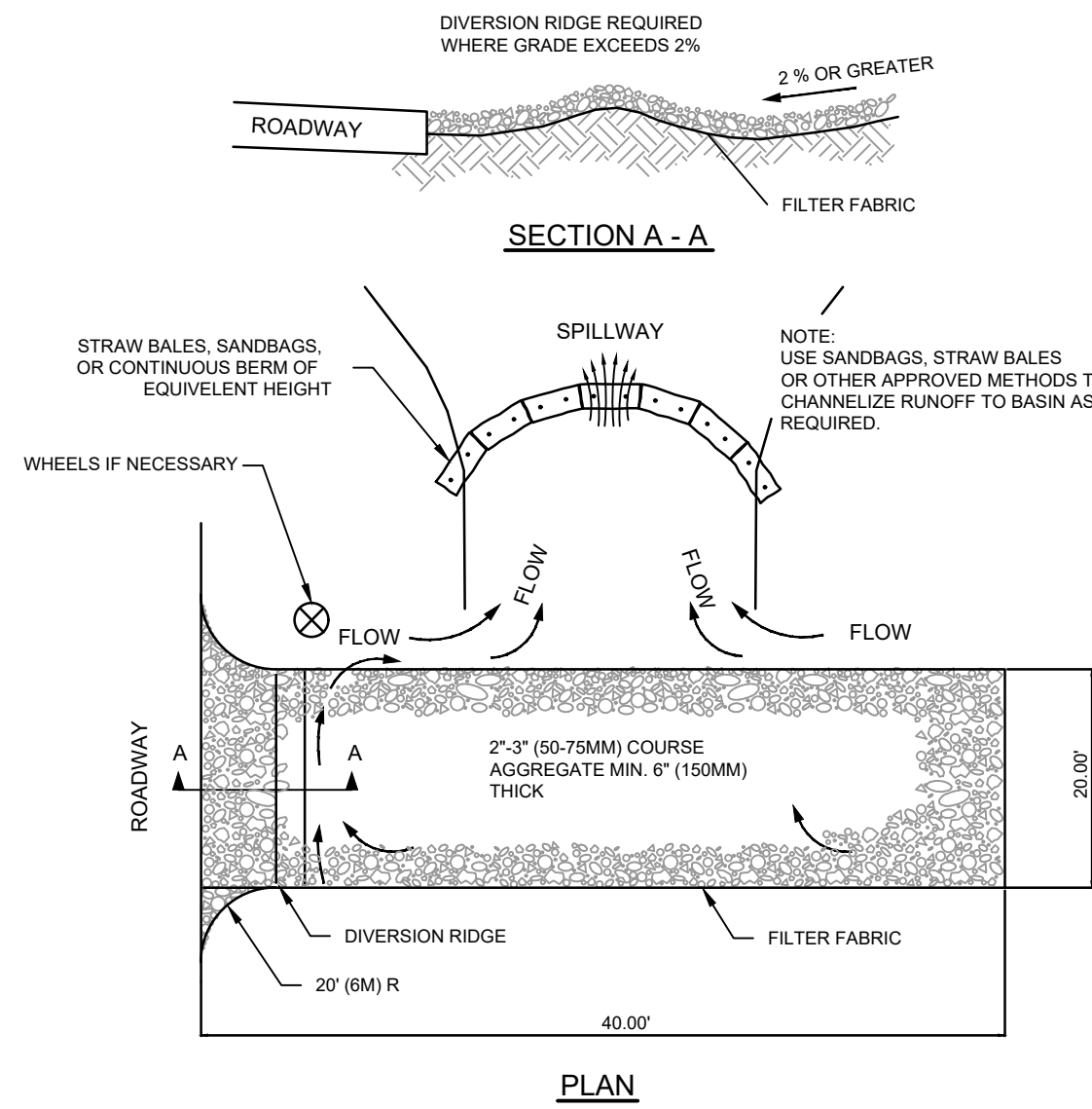
6

7

8

9

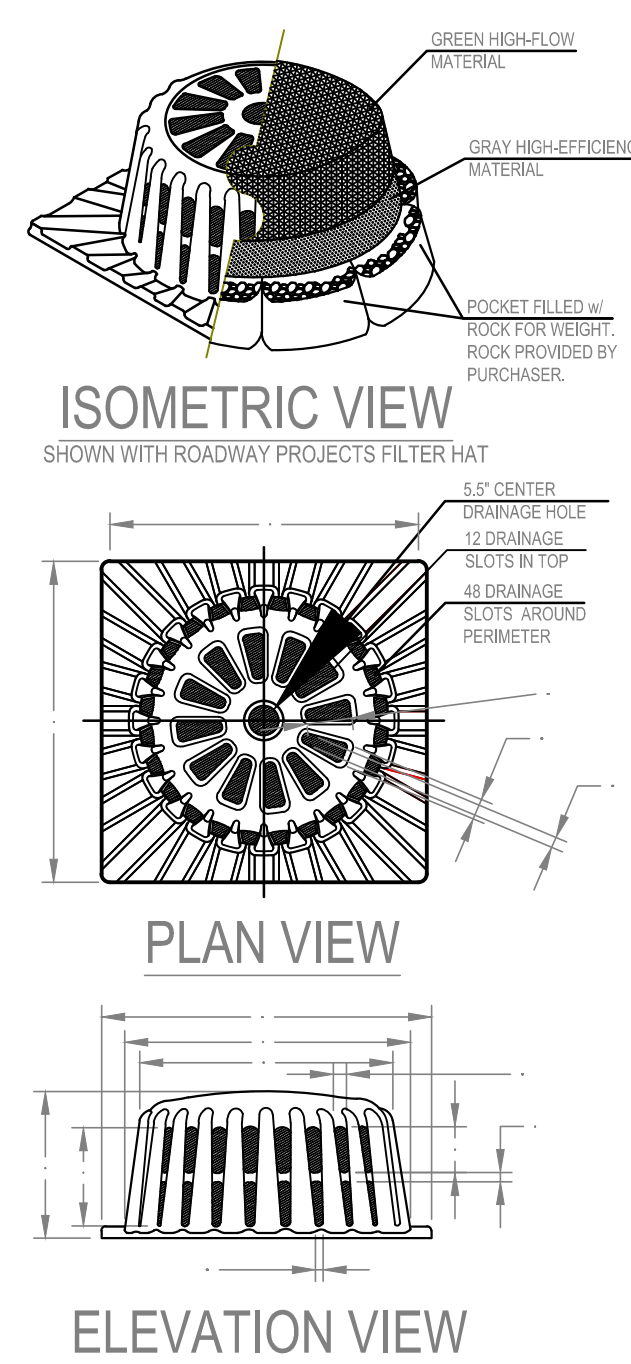
10



- NOTES:
- THE ENTRANCE SHALL BE MAINTAINED IN A CONDITION THAT WILL PREVENT TRACKING OR FLOWING OF SEDIMENT ONTO PUBLIC RIGHT-OF-WAYS. THIS MAY REQUIRE TOP DRESSING, REPAIR AND/OR CLEANOUT OF ANY MEASURES USED TO TRAP SEDIMENT.
  - FILTER FABRIC WILL BE LAID BEFORE ANY AGGREGATE TO PREVENT DAMAGE TO EXISTING PAVEMENT.
  - WHEN NECESSARY, WHEELS SHALL BE CLEANED PRIOR TO ENTRANCE ONTO PUBLIC RIGHT-OF-WAY.
  - WHEN WASHING IS REQUIRED, IT SHALL BE DONE ON AN AREA STABILIZED WITH CRUSHED STONE THAT DRAINS INTO AN APPROVED SEDIMENT TRAP OR SEDIMENT BASIN.

TEMPORARY GRAVEL CONSTRUCTION  
ENTRANCE/EXIT DETAIL

N.T.S.



SQUARE FRAME & FILTER  
ASSEMBLY  
Model # S-200A

REPLACEMENT FILTERS: MODEL # S-240  
SILT-SAVER, INC. 1094 CULPEPPER DRIVE, CONYERS, GA 30094 PHONE: (770) 388-7810 FAX: (770) 388-7840 TOLL FREE: 1-888-382-SILT (7458) www.silt-saver.com

FRAME MATERIAL - BLACK 0.25" HWWPE  
FILTER FABRIC MATERIAL - REFER TO SPEC.  
SCALE: NOT TO SCALE  
LAST UPDATED: APRIL 2010

FILTER OPTIONS

FILTER HAT IS AVAILABLE IN THREE OPTIONS:

- 1) ALL HIGH-FLOW MATERIAL
- 2) ALL HIGH-EFFICIENCY MATERIAL
- 3) HIGH-FLOW MATERIAL ON TOP HALF OF HAT, HIGH-EFFICIENCY MATERIAL ON BOTTOM HALF (THIS FILTER COVER IS RECOMMENDED FOR ALL ROADWAY PROJECTS)

IT IS THE PURCHASER'S RESPONSIBILITY TO PURCHASE APPROPRIATE FILTER HAT. PURCHASER SHALL PROVIDE ROCK FOR FILTER POCKETS.

FILTER HAT INSTALLATION

FILTER HAT SIDES DIRECTLY OVER FILTER FRAME. TO KEEP FILTER FRAME IN PLACE OVER STORM STRUCTURE, ROCK POCKETS ARE SEWN DIRECTLY INTO FILTER HAT MATERIAL. EVERY FILTER HAT COMES IN ONE PIECE FOR EASY INSTALLATION.

MAINTENANCE

ALL TEMPORARY EROSION, SEDIMENTATION, & POLLUTION CONTROL PRACTICES SHOULD BE INSPECTED DAILY. CONTRACTOR SHALL REMOVE SEDIMENT AND DISPOSE OF IN A PROPER MANNER. INSPECT S-200A DAILY FOR CUTS, ABRASIONS, AND PROPER INSTALLATION. REPLACE OR REPOSITION AS NECESSARY.

SPECIFICATIONS

FILTER FABRIC SILT-SAVER HAT SHALL BE BASED ON DESIGN PROFESSIONAL'S SPECIFICATIONS.

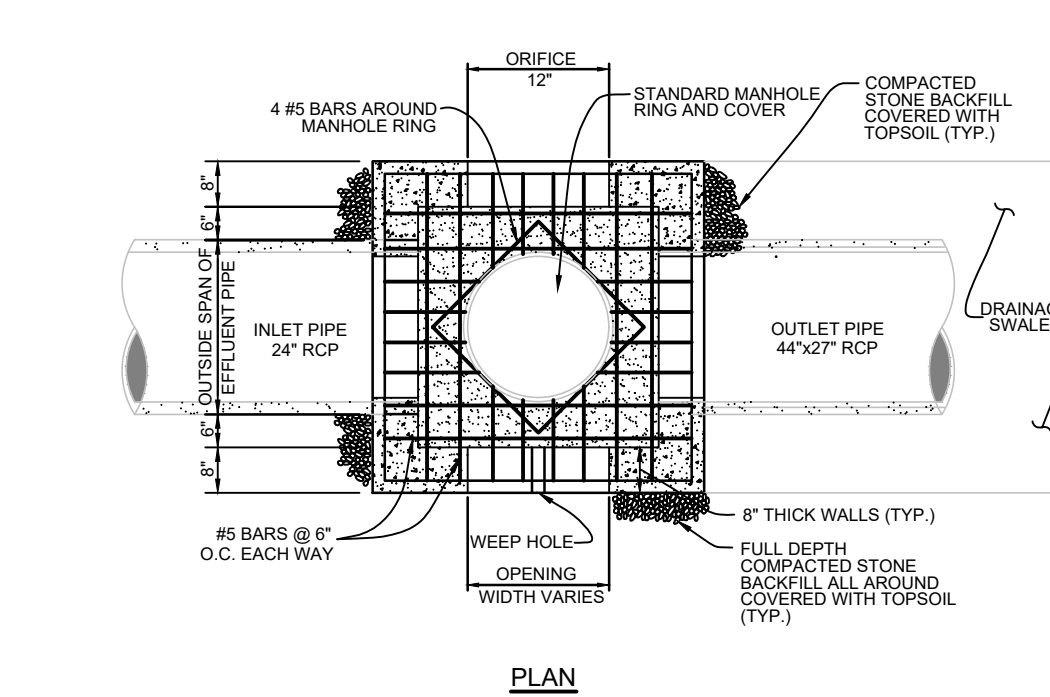
HEAD (FT)	EQUATION	OPENING AREA (SQ. FT.)	FRAME AREA (SQ. FT.)	FILTER AREA (SQ. FT.)	FILTERED FLOW (GPM)
0.5	0	0.1	0.1	0.1	0.1
1.0	0	0.3	0.3	0.3	0.3
1.5	0	0.7	0.7	0.7	0.7
2.0	0	1.0	1.0	1.0	1.0
2.5	0	1.5	1.5	1.5	1.5
3.0	0	2.0	2.0	2.0	2.0

NOTE: TRENCH OPTION IS MOST APPLICABLE IN LOOSE, UNCONSOLIDATED SOILS.

1 1/2" x 1 1/2" x 30" WOODEN STAKES ARE RECOMMENDED FOR 6", 9", AND 12" SEDIMENT LOGS.

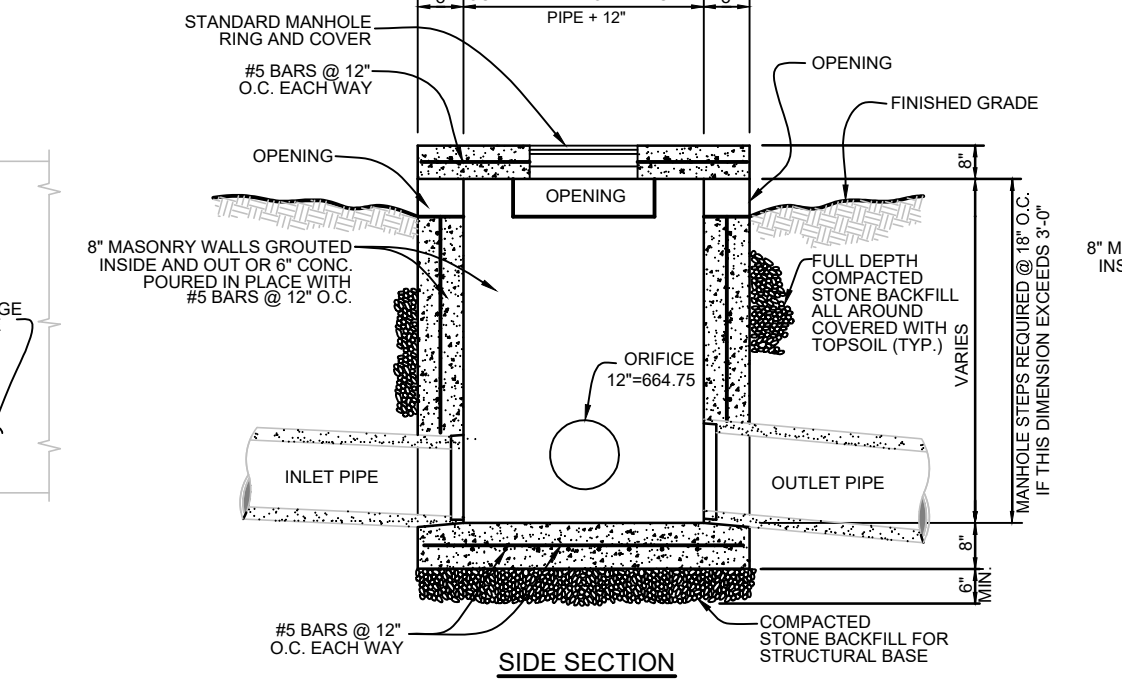
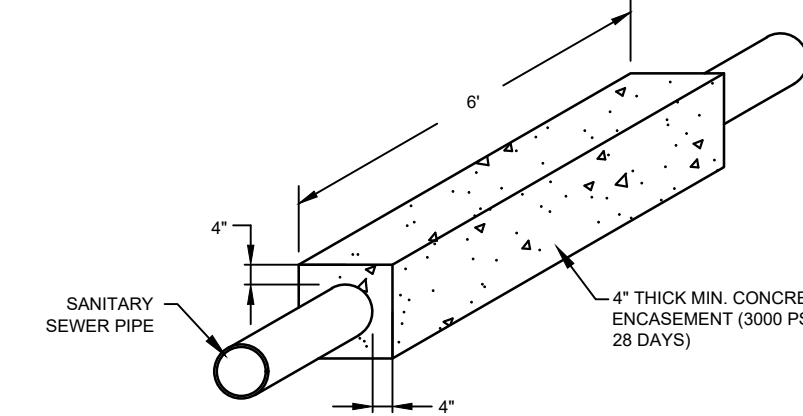
1 1/2" x 1 1/2" x 48" WOODEN STAKES ARE RECOMMENDED FOR 20" SEDIMENT LOGS.

FILTER MATERIAL ALLOWS 129 gpm/SF OR 0.26d/sq. ORIFICE EQUATION (Q) = Q(0.62d^2g/h)^0.5  
P = FEET PERMETER  
h = HEAD IN FEET  
Q = CAPACITY IN GPM  
d = FREE OPEN AREA OF FRAME  
g = 32.2 FEET/PER-SECOND-SQUARED



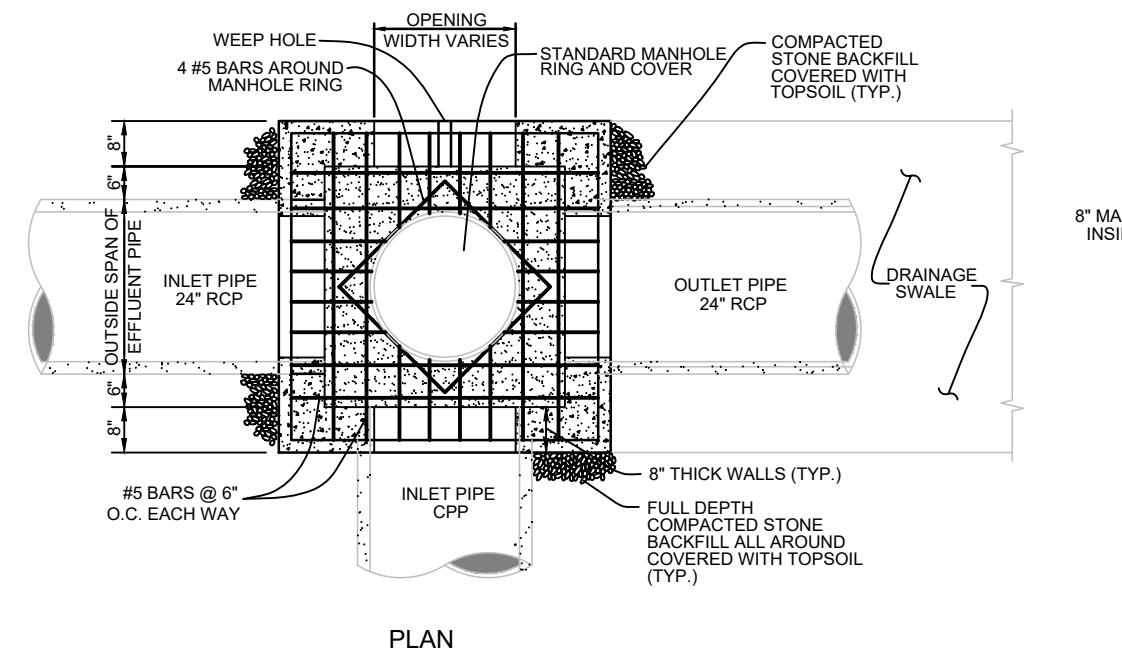
CONCRETE ENCASEMENT DETAIL

N.T.S.



SPECIAL OPEN THROAT INLET DETAIL

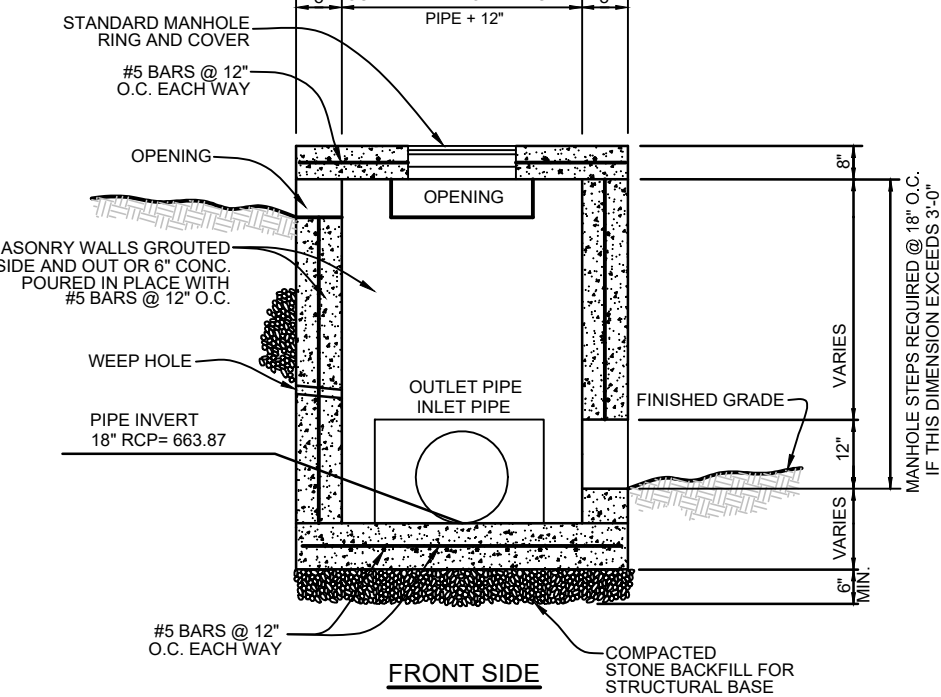
N.T.S.



PLAN

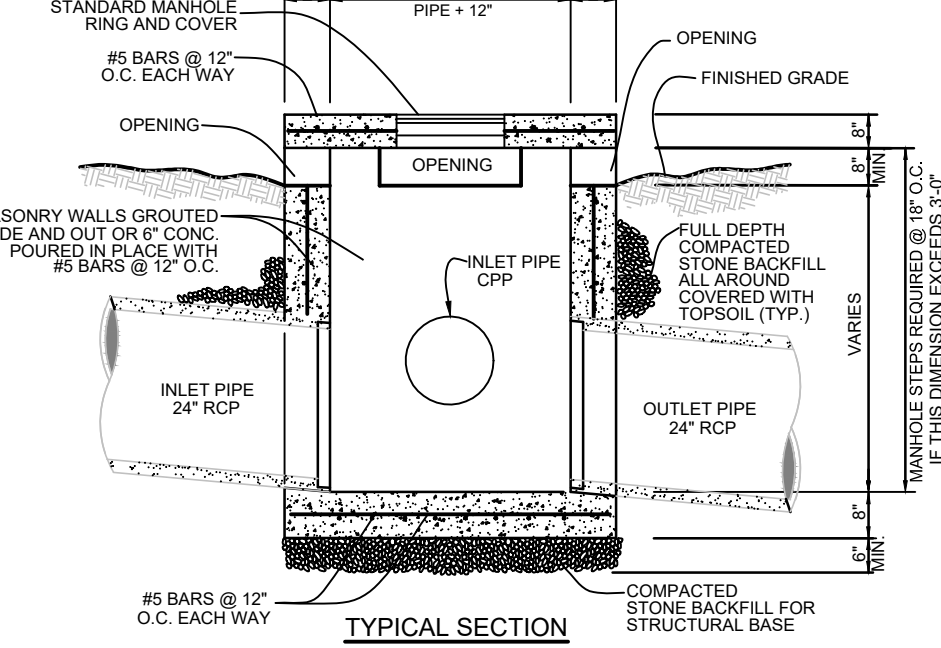
STANDARD OPEN THROAT INLET DETAIL

N.T.S.



STANDARD OPEN THROAT INLET DETAIL

N.T.S.

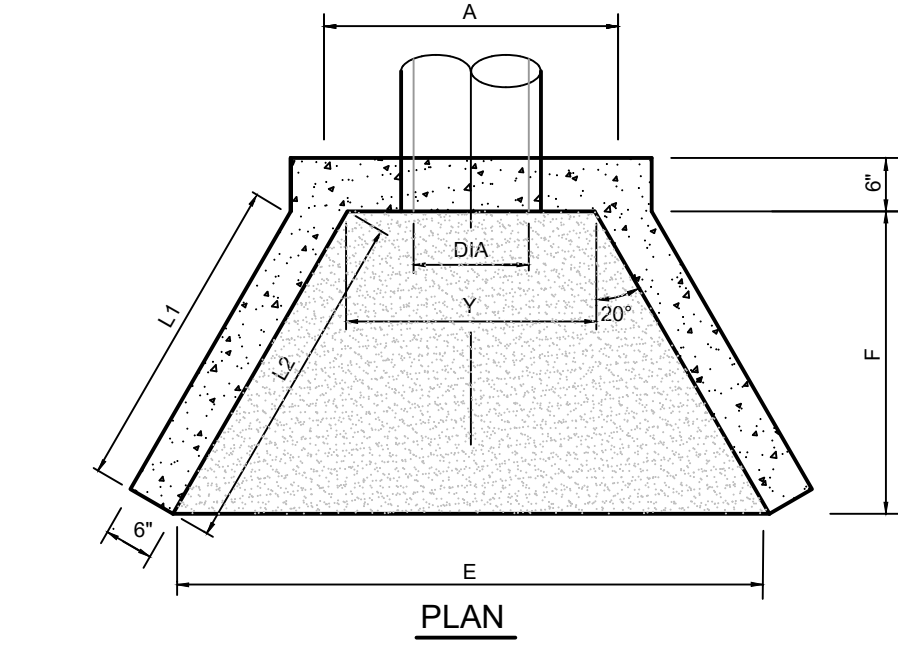


TYPICAL SECTION

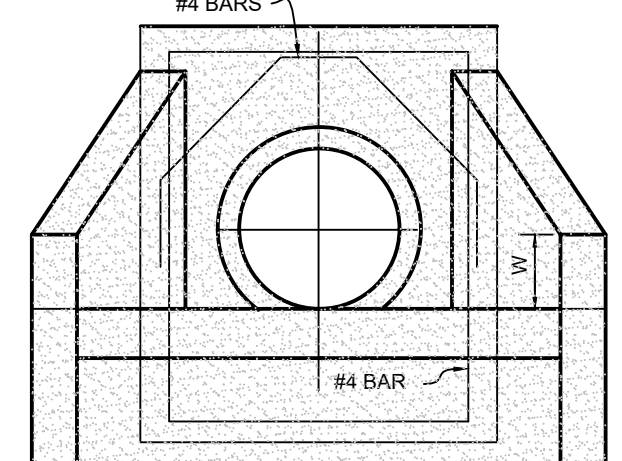
Pipe Size Inside Diameter	Min Thick Of Shell	A	E	F	H	R	L1	W	Y	K
18"	2"	3'-6 3/4"	5'-3 7/8"	5'-2"	2'-8 1/2"	7"	5'-3 3/4"	0'-8"	2'-6"	3'-4 1/2"
24"	2 1/2"	4'-1 3/4"	6'-9"	6'-10"	3'-3 1/2"	7"	7'-1 1/8"	0'-9 1/2"	3'-1"	3'-11 1/2"
30"	3 1/4"	4'-9 1/4"	8'-2"	8'-2"	3'-10 1/2"	7"	8'-6 1/8"	0'-11 3/4"	3'-8 1/2"	4'-6 1/2"
36"	3 1/2"	5'-3 3/4"	9'-6 3/8"	9'-8"	4'-5 1/2"	7 1/2"	10'-1 1/4"	1'-1 1/2"	4'-3"	5'-1 1/2"
42"	4"	5'-10 3/4"	11'-0"	11'-0"	5'-0 1/2"	7 1/2"	11'-6 1/4"	1'-4"	4'-10"	5'-8 1/2"
48"	4 1/2"	6'-5 3/4"	12'-6"	12'-6"	5'-7 1/2"	7 1/2"	13'-1 1/2"	1'-6"	5'-5"	6'-3 1/2"
54"	5 1/2"	7'-1 3/4"	13'-10"	13'-10"	6'-2 1/2"	8"	14'-6 1/2"	1'-7 1/2"	6'-1"	6'-10 1/2"
60"	6"	7'-8 3/4"	15'-6"	15'-6"	6'-9 1/2"	8"	16'-3 3/4"	1'-9"	6'-8"	7'-5 1/2"
66"	6 1/2"	8'-3 3/4"	16'-8"	16'-8"	7'-5"	8 1/2"	17'-6 3/4"	2'-0"	7'-3"	8'-1"

STANDARD HEADWALL DETAIL

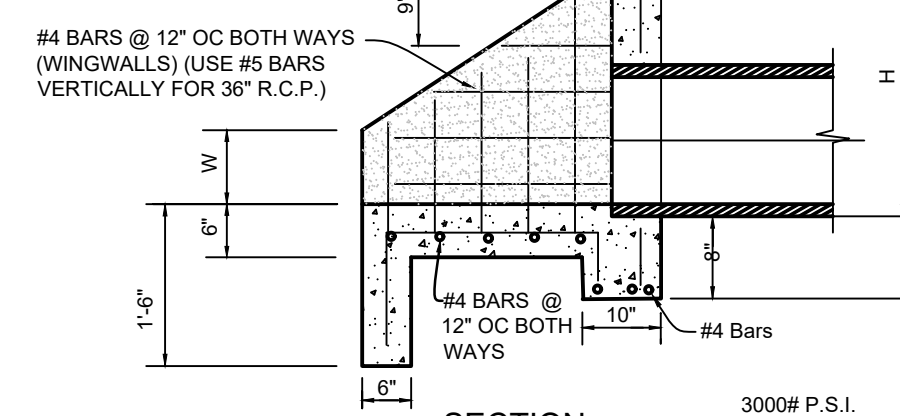
N.T.S.



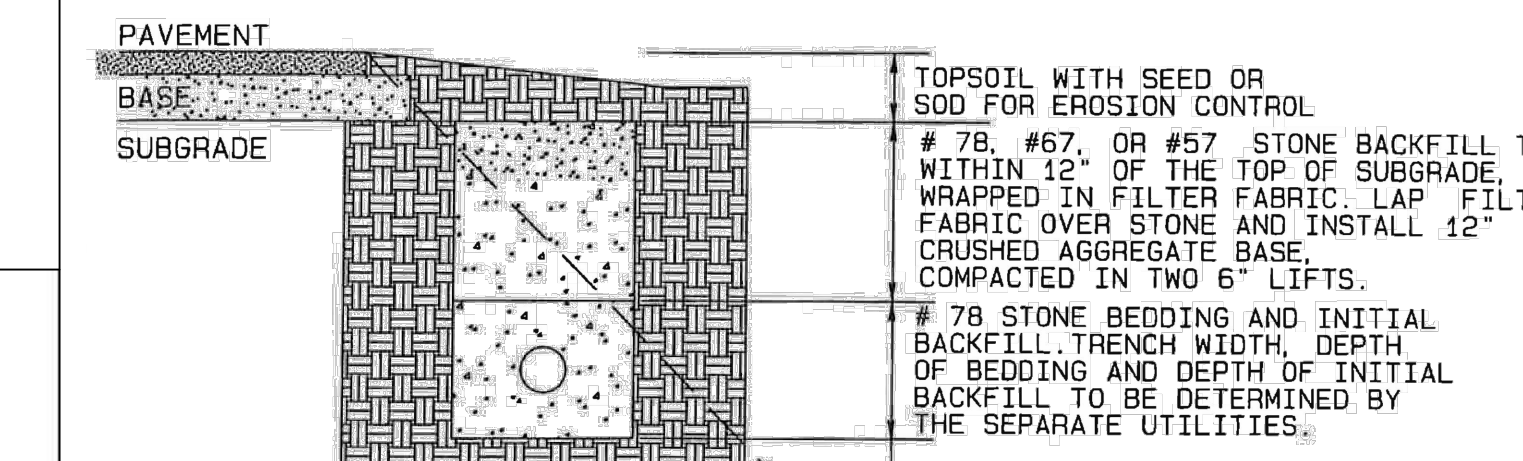
PLAN



ELEVATION



SECTION



PAVEMENT  
BASE  
SUBGRADE

TOPSOIL WITH SEED OR SOD FOR EROSION CONTROL

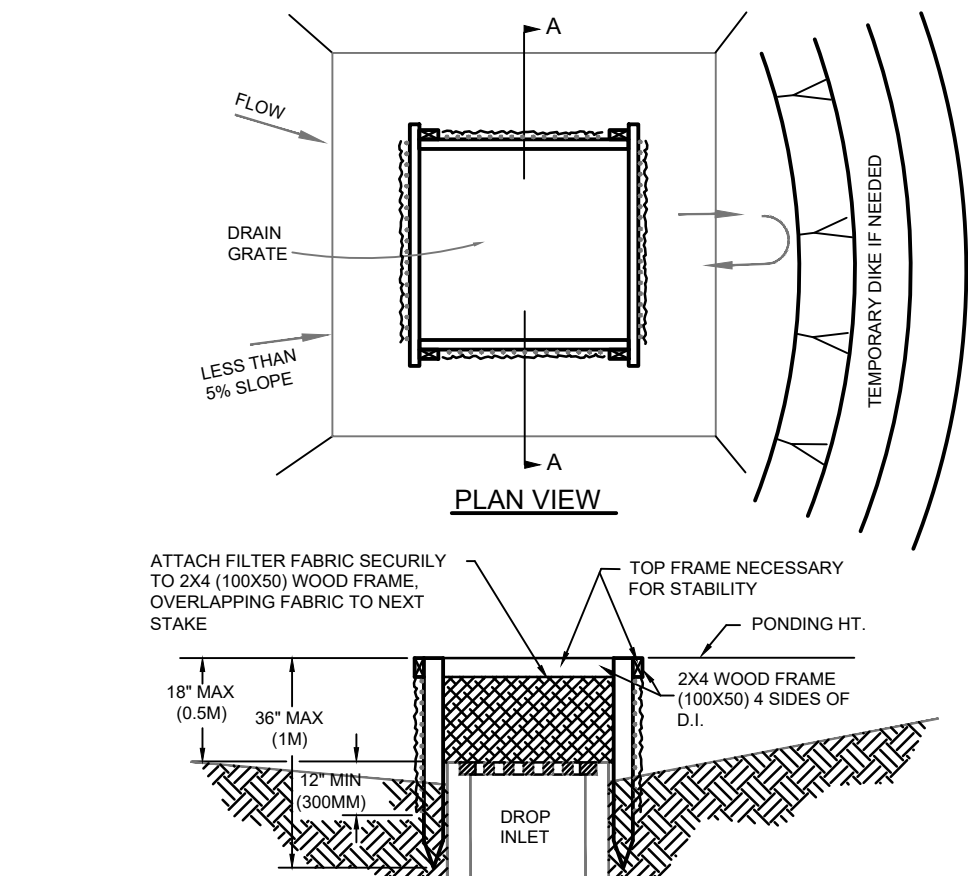
# 78, #67, OR #57 STONE BACKFILL TO WITHIN 12" OF THE TOP OF SUBGRADE. WRAPPED IN FILTER FABRIC. LAP FILTER FABRIC OVER STONE AND INSTALL 12" CRUSHED AGGREGATE BASE, COMPACTED IN TWO 6" LIFTS.

# 78 STONE BEDDING AND INITIAL BACKFILL TRENCH WIDTH, DEPTH OF BEDDING AND DEPTH OF INITIAL BACKFILL TO BE DETERMINED BY THE SEPARATE UTILITIES.

UTILITIES INSTALLED WITHIN A 1:1 BEARING OF THE EDGE OF ASPHALT PAVEMENT SHALL BE BACKFILLED AS REQUIRED FOR UTILITIES UNDER PAVEMENT. UTILITIES INSTALLED UNDER A FUTURE ROADWAY WIDENING LOCATION SHALL BE INSTALLED AS FOR UNDER PAVEMENT.

TRENCH BACKFILL TO MEET THE MADISON CITY SPECIFICATIONS. CALL FOR CITY INSPECTION DURING BACKFILL.

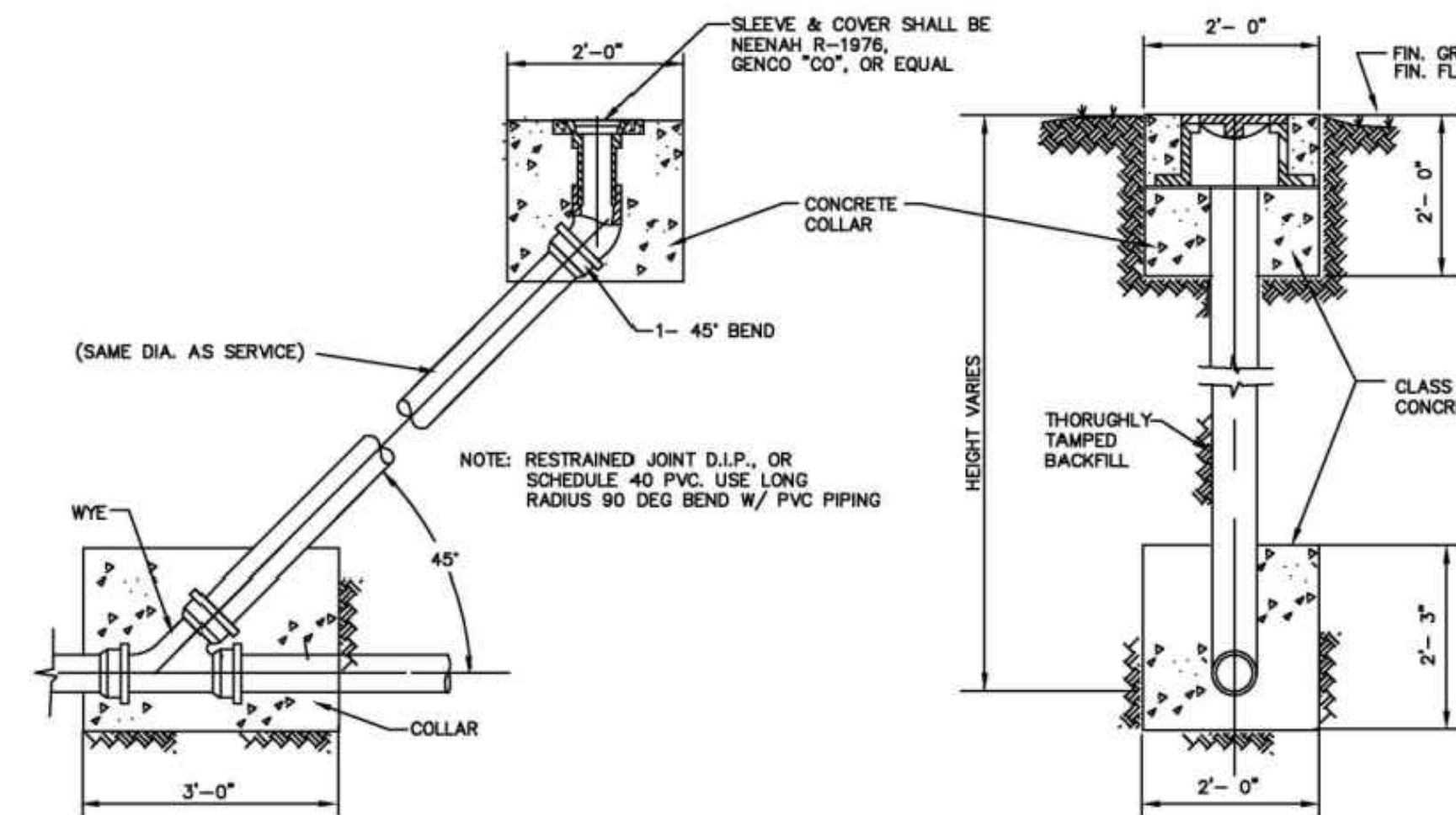
UTILITY TRENCH INSTALLATION WITHIN EXISTING RIGHT OF WAY BUT NOT UNDER PAVEMENT STRUCTURE



- NOTES:
- DROP INLET SEDIMENT BARRIERS ARE TO BE USED FOR SMALL, NEARLY LEVEL DRAINAGE AREAS, (LESS THAN 5%)
  - USE 2"x4" (100x50MM) WOOD OR EQUIVALENT METAL STAKES, 3' (914MM) MINIMUM LENGTH.
  - INSTALL 2"x4" (100x50MM) WOOD TOP FRAME TO INSURE STABILITY.
  - THE TOP OF THE FRAME (PONDING HEIGHT) MUST BE WELL BELOW THE GROUND ELEVATION DOWNSLOPE TO PREVENT RUNOFF FROM BY-PASSING THE INLET. A TEMPORARY DIKE MAY BE NECESSARY ON THE DOWNSLOPE SIDE OF THE STRUCTURE.

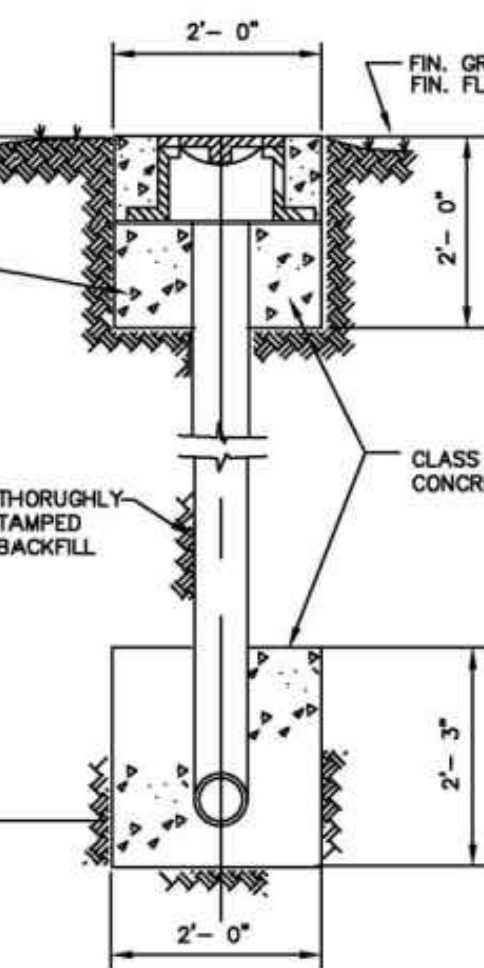
FABRIC  
DROP INLET  
SEDIMENT BARRIER

N.T.S.



SANITARY SEWER CLEAN-OUT

N.T.S.



END

MADISON UTILITIES  
STANDARD DETAILS  
SANITARY SEWER CLEANOUT  
COMMERCIAL

FEBRUARY 2020 STANDARD DRAWING NO. 8.360

NO.	DATE	APPD.	DESCRIPTION	APPROVED BY
1	02/20/20		ISSUED FOR CONSTRUCTION	



City of Madison  
Department of Engineering  
100 Hughes Road, Madison, Alabama 35708  
TEL: 256-712-5631 FAX: 256-712-6244

PLOT SCALE
1
APPROVED BY
GLC
DATE
6-29-2010
STANDARD DRAWING NUMBER
2640-26

GMC

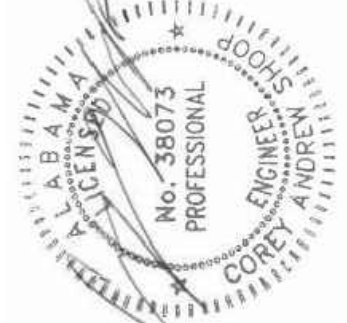
2400 5th Avenue S, Suite 200  
Birmingham, AL 35233  
T 205.879.4462  
GMCNETWORK.COM  
CA# 699

ISSUE DATE

CONSTRUCTION DOCUMENTS 03/02/2023

DOWNTOWN DITCH  
DRAINAGE IMPROVEMENT  
MADISON, AL

PROJ # 22-019  
GMC CHUN220026



CONSTRUCTION DETAILS

C3.0  
Sheet 8 of 8

3-2-2023