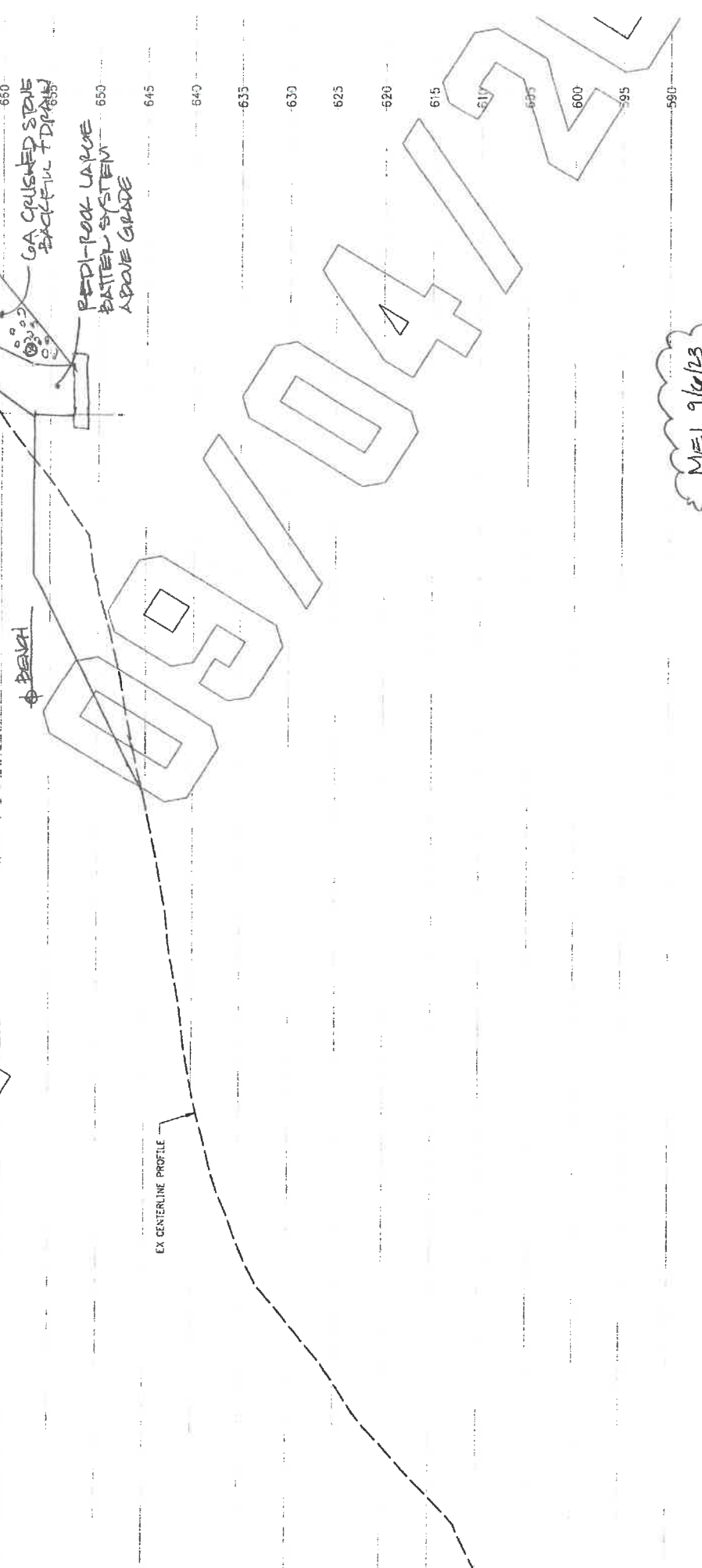
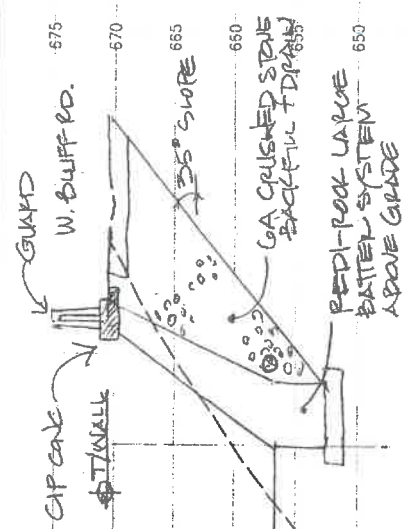


RECEIVED
OCT 3 2023

SW



M/E 9/16/23
P/M

EXIST CENTERLINE ELEV. (TYP) PROP CENTERLINE ELEV. (TYP)

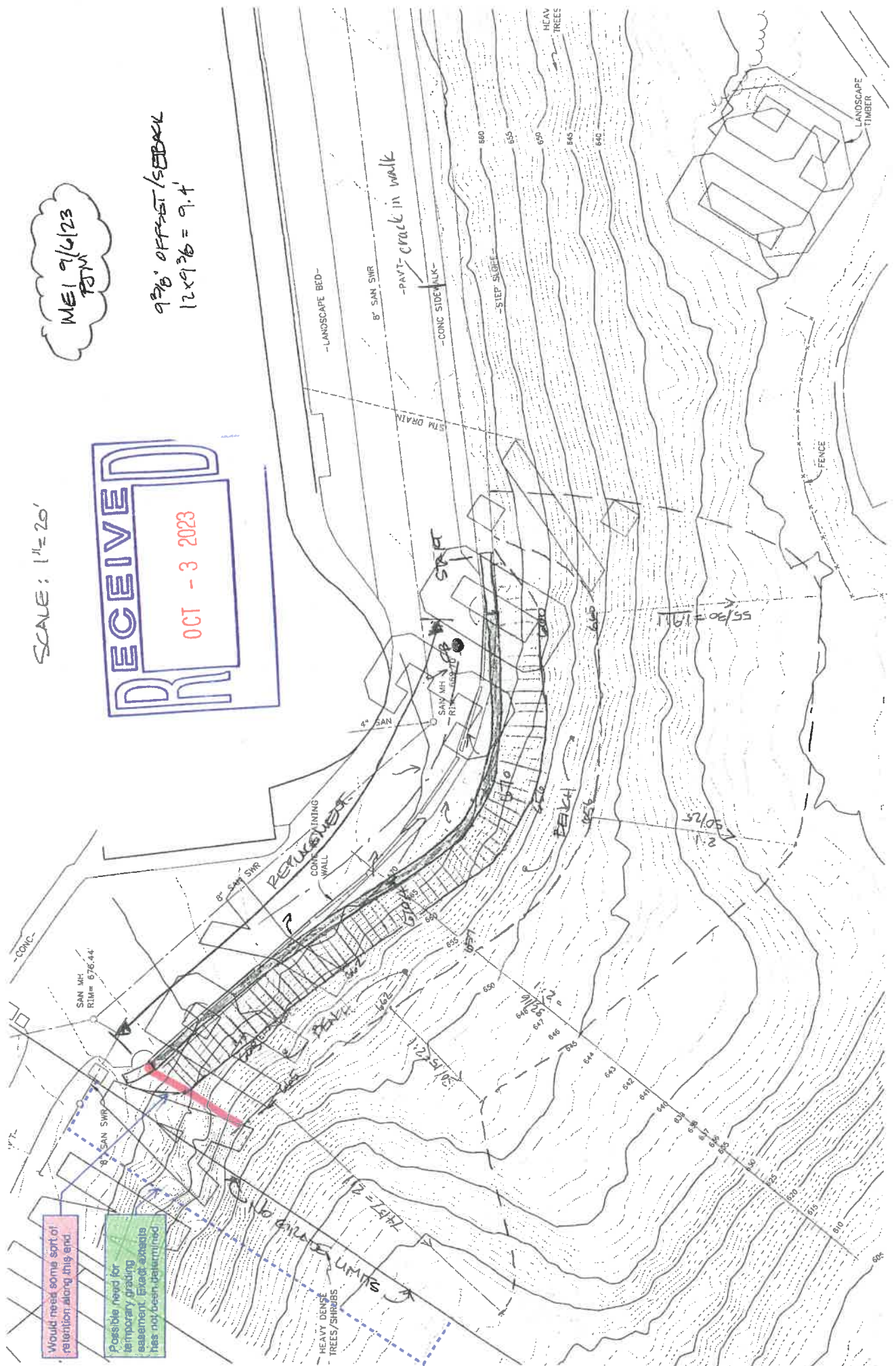
625	619
620	614
615	609
610	604
605	599
600	594
595	589
590	584
585	579
580	574
575	569
570	564
565	559
560	554
555	549
550	544
545	539
540	534
535	529
530	524
525	519
520	514
515	509
510	504
505	499
500	494
495	489
490	484
485	479
480	474
475	469
470	464
465	459
460	454
455	449
450	444
445	439
440	434
435	429
430	424
425	419
420	414
415	409
410	404
405	399
400	394
395	389
390	384
385	379
380	374
375	369
370	364
365	359
360	354
355	349
350	344
345	339
340	334
335	329
330	324
325	319
320	314
315	309
310	304
305	299
300	294
295	289
290	284
285	279
280	274
275	269
270	264
265	259
260	254
255	249
250	244
245	239
240	234
235	229
230	224
225	219
220	214
215	209
210	204
205	199
200	194
195	189
190	184
185	179
180	174
175	169
170	164
165	159
160	154
155	149
150	144
145	139
140	134
135	129
130	124
125	119
120	114
115	109
110	104
105	99
100	94
95	89
90	84
85	79
80	74
75	69
70	64
65	59
60	54
55	49
50	44
45	39
40	34
35	29
30	24
25	19
20	14
15	9
10	4
5	-1
0	-6
-5	-11
-10	-16
-15	-21
-20	-26
-25	-31
-30	-36
-35	-41
-40	-46
-45	-51
-50	-56
-55	-61
-60	-66
-65	-71
-70	-76
-75	-81
-80	-86
-85	-91
-90	-96
-95	-101
-100	-106
-105	-111
-110	-116
-115	-121
-120	-126
-125	-131
-130	-136
-135	-141
-140	-146
-145	-151
-150	-156
-155	-161
-160	-166
-165	-171
-170	-176
-175	-181
-180	-186
-185	-191
-190	-196
-195	-201
-200	-206
-205	-211
-210	-216
-215	-221
-220	-226
-225	-231
-230	-236
-235	-241
-240	-246
-245	-251
-250	-256
-255	-261
-260	-266
-265	-271
-270	-276
-275	-281
-280	-286
-285	-291
-290	-296
-295	-301
-300	-306
-305	-311
-310	-316
-315	-321
-320	-326
-325	-331
-330	-336
-335	-341
-340	-346
-345	-351
-350	-356
-355	-361
-360	-366
-365	-371
-370	-376
-375	-381
-380	-386
-385	-391
-390	-396
-395	-401
-400	-406
-405	-411
-410	-416
-415	-421
-420	-426
-425	-431
-430	-436
-435	-441
-440	-446
-445	-451
-450	-456
-455	-461
-460	-466
-465	-471
-470	-476
-475	-481
-480	-486
-485	-491
-490	-496
-495	-501
-500	-506
-505	-511
-510	-516
-515	-521
-520	-526
-525	-531
-530	-536
-535	-541
-540	-546
-545	-551
-550	-556
-555	-561
-560	-566
-565	-571
-570	-576
-575	-581
-580	-586
-585	-591
-590	-596
-595	-601
-600	-606
-605	-611
-610	-616
-615	-621
-620	-626
-625	-631
-630	-636
-635	-641
-640	-646
-645	-651
-650	-656
-655	-661
-660	-666
-665	-671
-670	-676
-675	-681
-680	-686
-685	-691
-690	-696
-695	-701
-700	-706
-705	-711
-710	-716
-715	-721
-720	-726
-725	-731
-730	-736
-735	-741
-740	-746
-745	-751
-750	-756
-755	-761
-760	-766
-765	-771
-770	-776
-775	-781
-780	-786
-785	-791
-790	-796
-795	-801
-800	-806
-805	-811
-810	-816
-815	-821
-820	-826
-825	-831
-830	-836
-835	-841
-840	-846
-845	-851
-850	-856
-855	-861
-860	-866
-865	-871
-870	-876
-875	-881
-880	-886
-885	-891
-890	-896
-895	-901
-900	-906
-905	-911
-910	-916
-915	-921
-920	-926
-925	-931
-930	-936
-935	-941
-940	-946
-945	-951
-950	-956
-955	-961
-960	-966
-965	-971
-970	-976
-975	-981
-980	-986
-985	-991
-990	-996
-995	-1001
-1000	-1006

SCALE: 1" = 20'

ME1 9/16/23
RSM

9' 3" OFFSET / SEBACK
12 x 9' 3" = 9.4'

RECEIVED
OCT - 3 2023



Would need some sort of retention along this end.

Possible need for temporary grading easement. Final details has not been determined.

NO REMAINING UNITS

PRELIMINARY

SEE 'DETAIL A'
ON SHEET D2

PROP CONCRETE
RAIL POST

CAST IN-PLACE
COPING

T/WALL
EL= SEE WALL
DESIGN PROFILE

WALL
EXPOSURE

REDI-BLOCK RETAIN
WALL PLANTER BLOCKS
REDI-BLOCK RETAIN
WALL BLOCKS

6A CRUSHED STONE
BACKFILL, CIP

REDI-BLOCK PLANTER BLOCK W/
KNOB IN THE 16 5/8" PLANTER
SETBACK POSITION

NON-WOVEN
GEOTEXTILE,
8oz OR EQUAL

6" DIA PERF
DRAIN TILE

B/WALL
EL= SEE WALL
DESIGN PROFILE

3.0' MIN
BURY

** 16 5/8" PLANTER SETBACK
*** 15 1/8" STANDARD SETBACK

8.00'

MIN 18" 6A CRUSHED
STONE BASE FT'G, CIP

CREATED:
10/09/2023
DRN BY: KAS
CKD BY:
SUBMITTED FOR:
PRESENTATION
PROJECT NUMBER:
23142

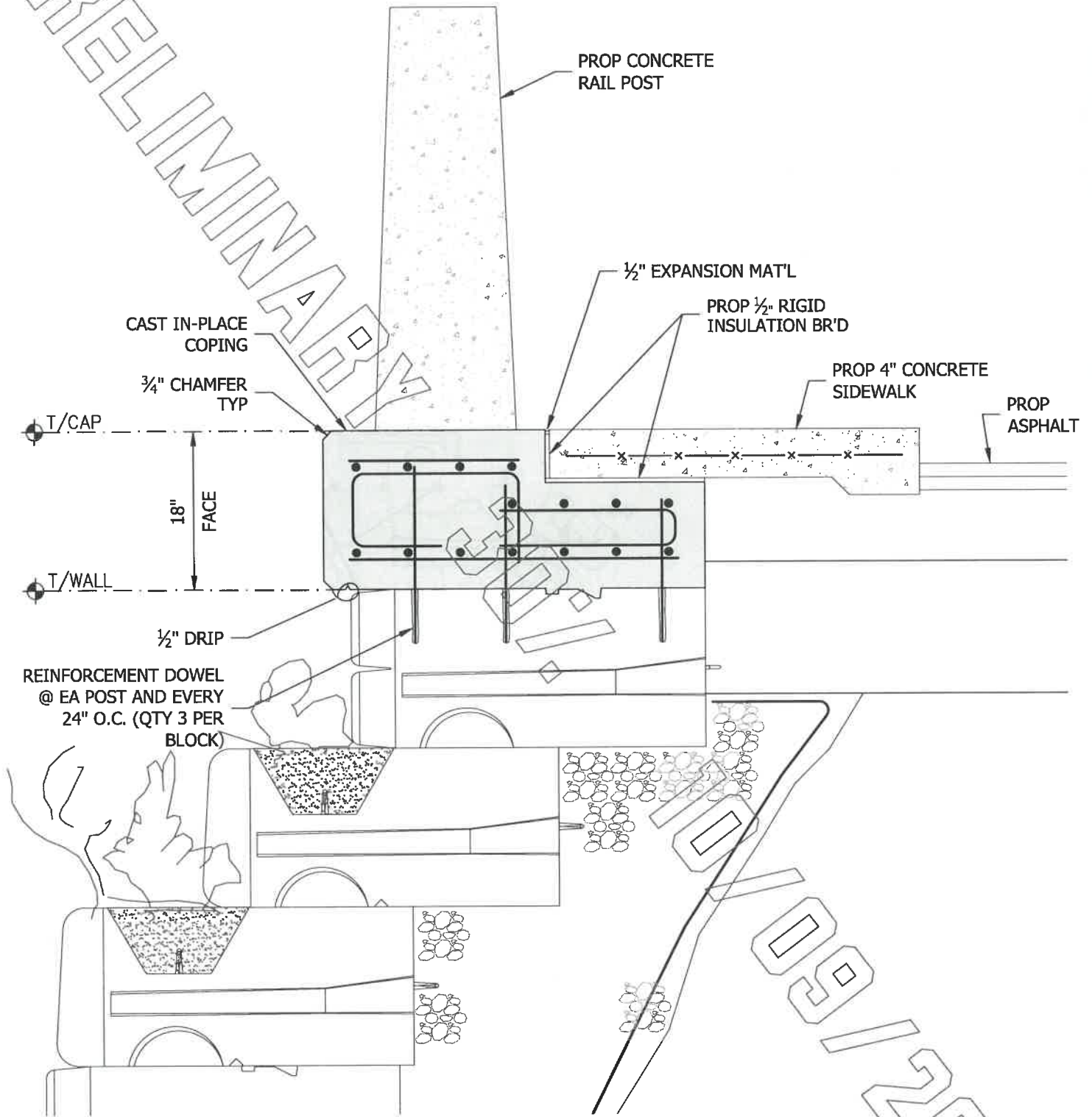
MACHIN
ENGINEERING

1235 E FRONT ST, Suite A
Traverse City, Michigan 49686
PH 231.935.1530

POWER CONSTRUCTION
**TYPICAL
RETAINING WALL**
CITY OF MACKINAC ISLAND, MI
www.machinengineering.net

SHEET NO:
D1

PRELIMINARY



CREATED:
10/09/2023

DRN BY: KAS CKD BY: .

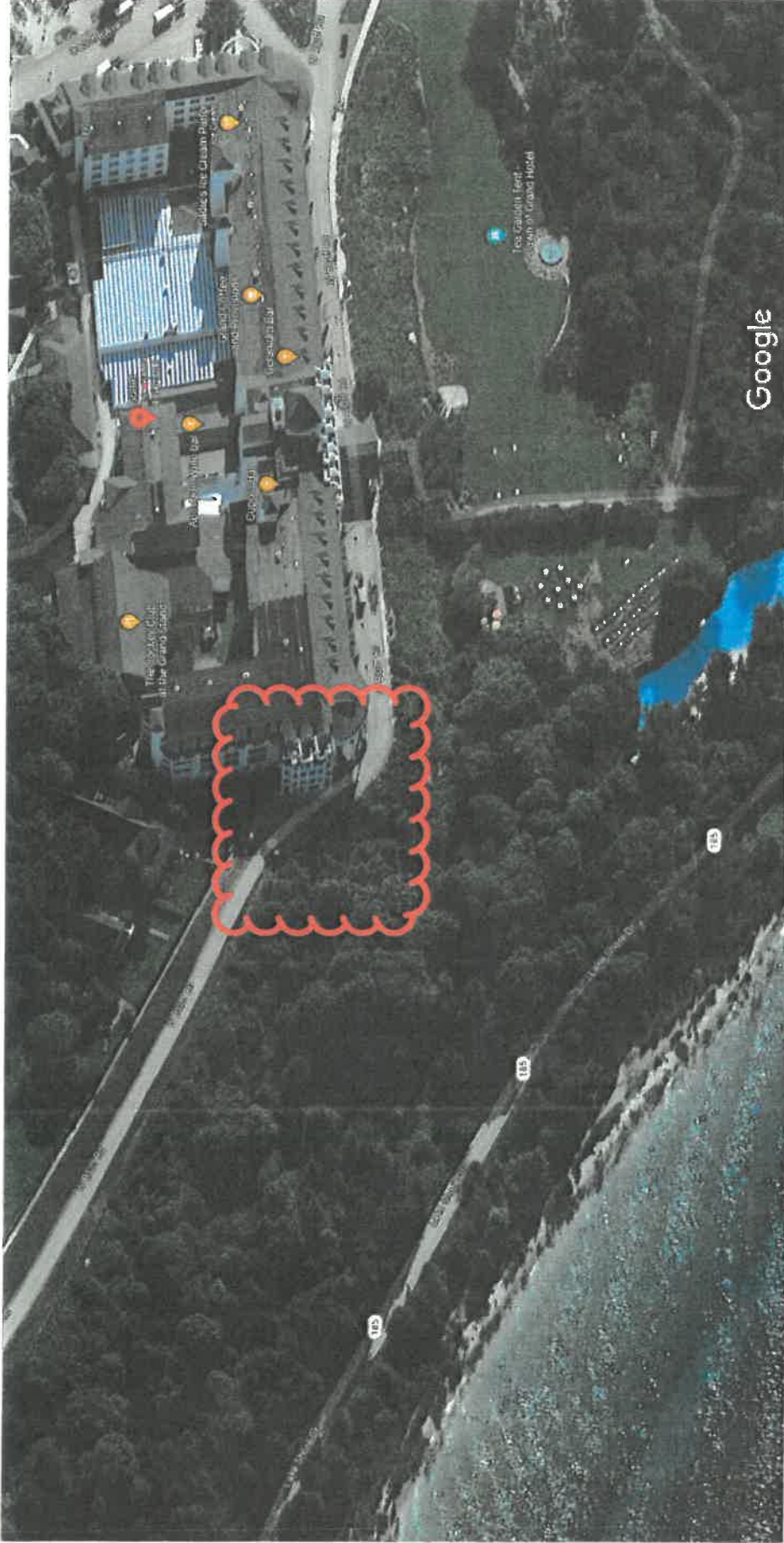
SUBMITTED FOR:
PRESENTATION

PROJECT NUMBER:
23142


MACHIN
 ENGINEERING
 1235 E FRONT ST, Suite A
 Traverse City, Michigan 49686
 PH 231.935.1530

POWER CONSTRUCTION
TYPICAL
CONCRETE WALL CAP
 CITY OF MACKINAC ISLAND, MI
www.machinengineering.net

SHEET NO:
D2



Imagery ©2023 Maxar Technologies, Map data ©2023 50 ft





REDI-ROCK

REDI-ROCK® MOLD TEXTURE OPTIONS FOR MANUFACTURERS

LEDGESTONE

OCT - 3 2023

Redi-Rock Ledgestone. It just has a certain ring to it, doesn't it? This texture has been extremely popular since it launched in 2010. The random, stacked stone appearance has often been imitated, but none compare to the original!

Ledgestone Block Benefits

- Trapezoidal shape allows convex and concave radii
- 5.5 inch (140 millimeter) deep texture
- Colors can be formulated based upon local region
- Ten individual face molds offer up to 115 square feet (10.5 square meters) of non-repeating patterns
- Wet-cast concrete gives a greater level of detail and durability

R002-A085-LD01



R002-A085-LD02



R002-A085-LD03



R002-A085-LD04



R002-A085-LD05



R002-A085-LD06



R002-A085-LD07



R002-A085-LD08



R002-A085-LD09



R002-A085-LD10



larger detail and other options ▶

Contact your Redi-Rock sales rep to order this texture today!

Full Face Molds

R002-A085-LD01



R002-A085-LD02



R002-A085-LD03



R002-A085-LD04



R002-A085-LD05



R002-A085-LD06



R002-A085-LD07



R002-A085-LD08



R002-A085-LD09



R002-A085-LD10



R002-A187-LD01 / LD02
42.5 in Curved Face Mold



R002-A193-LD01
Half Face Mold



Corner Face Molds

R003-A066-LD01

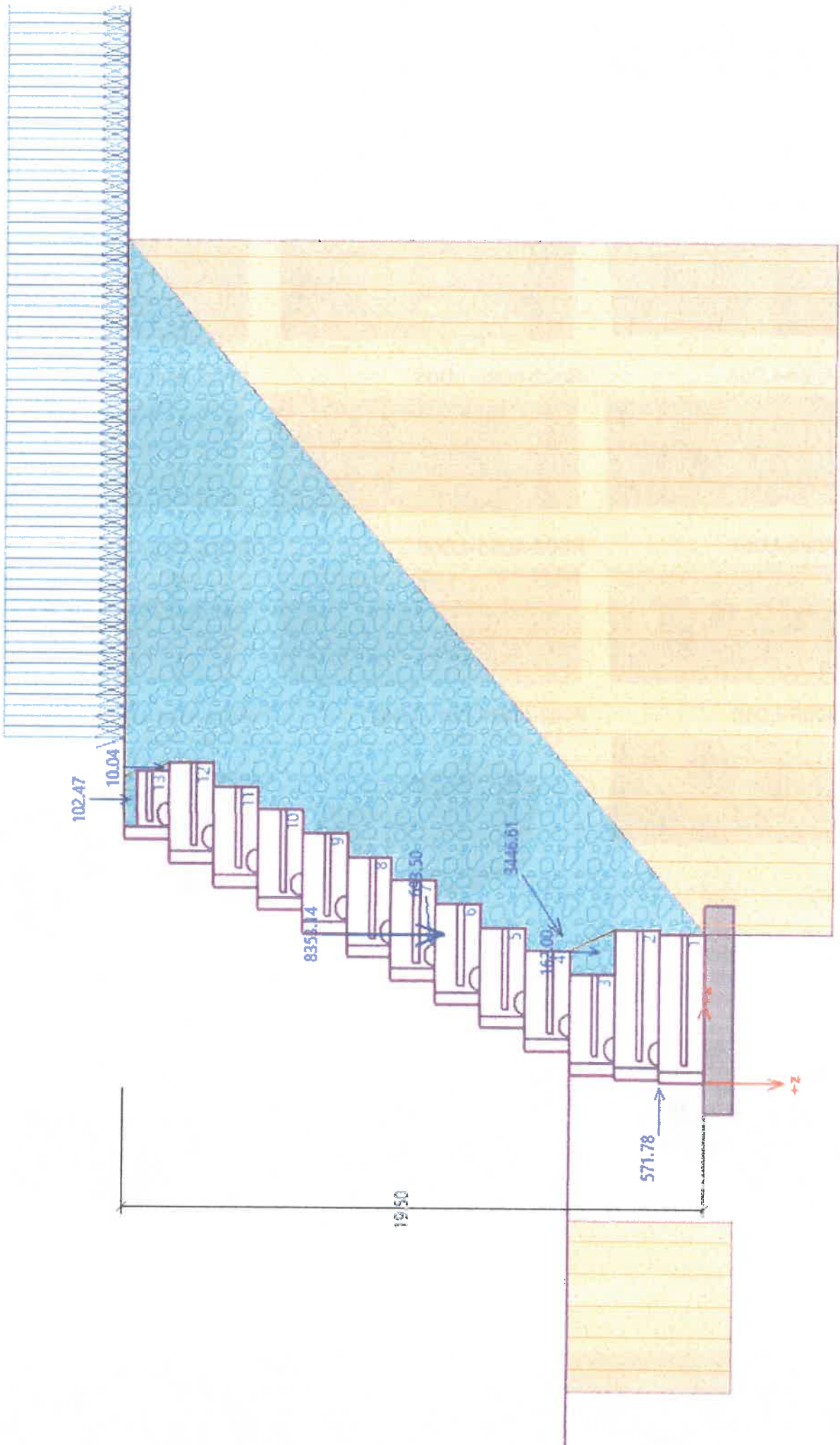


R003-A066-LD02



R003-A084-LD01
Half Corner Mold

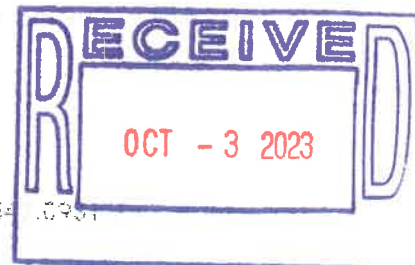






Richard
Neumann
Architect

619 Grand Avenue, Petcheney, Michigan 49770, 231.341.0991



29 September 2023

Katie Pereny, Secretary
Planning Commission
City of Mackinac Island
Mackinac Island, MI 49757

Re: **WEST BLUFF ROAD STABILIZATION PROJECT**
Architectural Review

Dear Ms. Pereny:

This letter is in response to a request from Davidson Hospitality Group to provide a review of a proposed emergency stabilization project to address erosion of the hillside below West Bluff Road near the southwest corner of The Grand Hotel. Long-term and recent more significant erosion of the hillside on hotel property below the road has raised concern as to the safety of this section of West Bluff Road.

Following more detailed engineering, The Grand Hotel proposes to shore up the road by installing an approximately 20 feet high by 150 feet long masonry retaining wall along a section of hillside below the road. The retaining wall would be constructed of precast concrete blocks using a system designed and fabricated by Redi-Rock International, of Charlevoix. It has the general appearance of random stacked stone similar to the natural limestone bedrock underlying and seen in the eroded bluffs found on the Island. This retaining wall system is comprised of ten different molded rock faces cast during fabrication, providing 115 square feet of non-repeating face pattern. The concrete comprising the rock-like block faces can be custom colored to match the native stone color, lending a more naturalistic appearance.

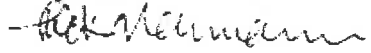
Used in this hillside location away from being associated with a building or structure, as is the white-painted stone wall of Fort Mackinac, the proposed new retaining wall of this more natural appearance would blend best to fit into the hillside. The proposed design includes a 15 feet wide level area at its base, along which it is proposed to place native plant materials that would screen portions of the new wall. This retaining wall appearance, rather than duplicate a more man-made painted white stone appearance, would be most appropriate at this location.

Should you have any questions, please let me know.

Sincerely,

West Bluff Road Stabilization Architectural Review
29 September 2023
Page 2

RICHARD NEUMANN ARCHITECT



Rick Neumann

- c. Michael McHale, Davidson Hospitality Group
Dennis Dombroski, City of Mackinac Island
Erin Evashevski, Evashevski Law Office