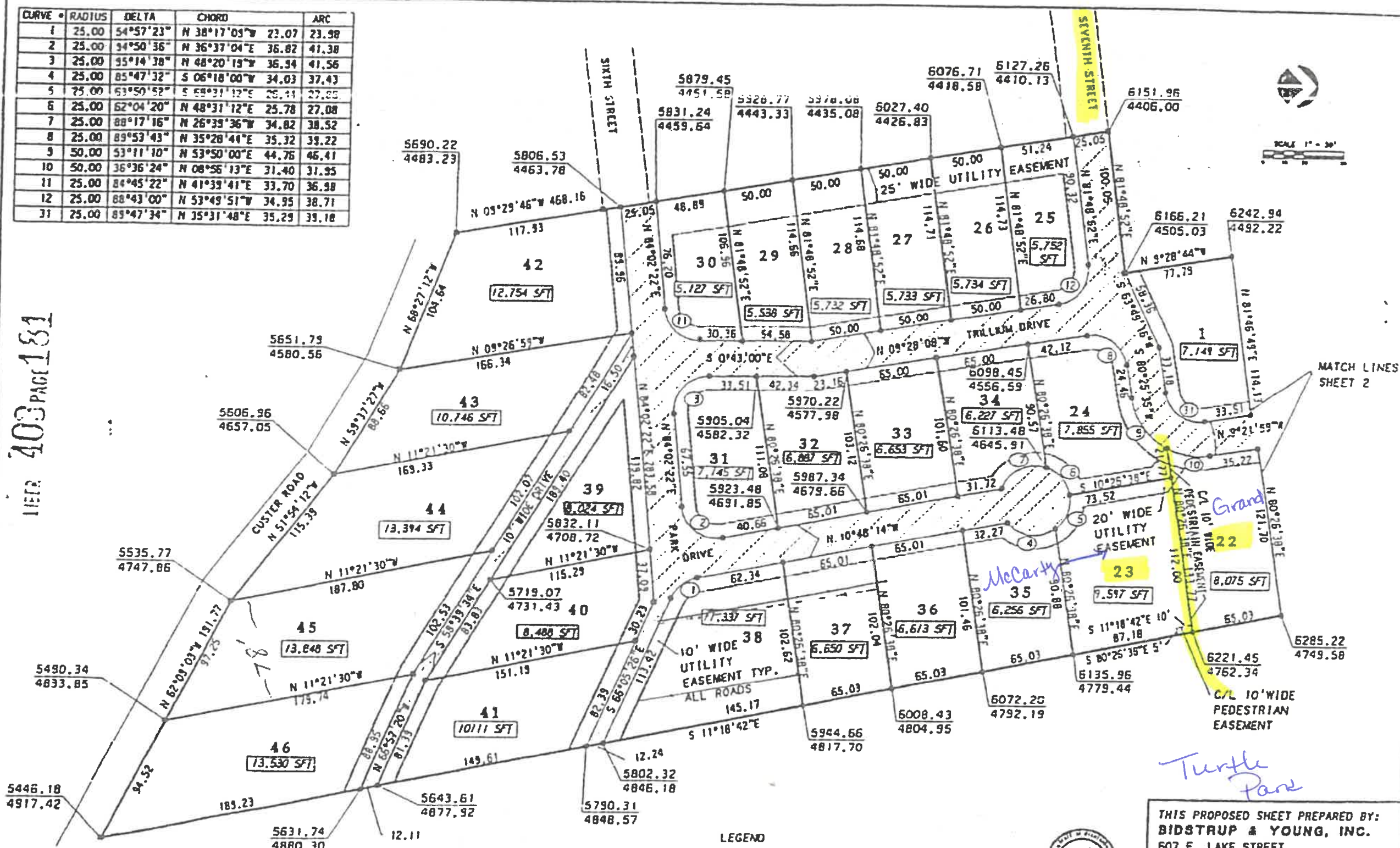


CURVE #	RADIUS	DELTA	CHORD	ARC
1	25.00	S4°57'23"	N 38°17'03"W 23.07	23.98
2	25.00	S4°50'36"	N 36°37'04"E 36.82	41.38
3	25.00	S5°14'38"	N 48°20'13"W 35.34	41.56
4	25.00	S5°47'32"	S 06°18'00"W 34.03	37.43
5	25.00	S5°50'52"	S 58°31'12"E 25.41	27.85
6	25.00	S2°04'20"	N 48°31'12"E 25.78	27.08
7	25.00	S8°17'16"	N 26°39'36"W 34.82	38.52
8	25.00	S8°53'43"	N 35°28'44"E 35.32	39.22
9	50.00	S3°11'10"	N 53°50'00"E 44.76	46.41
10	50.00	S3°36'24"	N 08°56'13"E 31.40	31.95
11	25.00	S4°45'22"	N 41°33'41"E 33.70	36.98
12	25.00	S8°43'00"	N 53°49'51"W 34.95	38.71
31	25.00	S9°47'34"	N 35°31'48"E 35.29	39.18

REF: 403 PAGE 181



- LEGEND
- PROPOSED IRON ROD
 - PROPOSED CONCRETE MONUMENT
 - GENERAL COMMON ELEMENT
 - UTILITY EASEMENT



THIS PROPOSED SHEET PREPARED BY:
BIDSTRUP & YOUNG, INC.
 607 E. LAKE STREET
 HARBOR SPRINGS, MICHIGAN 49740

James E. Young
 JAMES E. YOUNG, P.S. NO. 24626
 DATE: JULY 2, 1995