

August 26, 2025

Planning Commission

I am submitting the following in regards to the current project at The May House

Flush out the traffic issue on Cadotte Avenue

We will be fully self sufficient in bike parking. Required amount of parking is probably more then double the amount needed according to parking at The Mackinac House which is two more rooms.

3-5 Garbage bags will go out daily. We will set garbage out in the afternoon only

Deliveries will vary between 10-15 cases, three days a week. Will be done in the morning with food deliveries

Provide Landscape plan for the area between the Hotel and the House.

I have submitted a new site plan with a tree barrier between the properties

Provide the written construction criteria on the Site Plan Checklist

All materials will be brought over by Arnold Freight and Delivered by the Mackinac Island Service Company.

Will be using a CAT 307 Excavator from Belonga Excavating. A CAT TL642C Telehandler from Smith Equipment

The Foundation will be built in October.

Walls will be placed in November

Trusses will be placed in December

Finish work will continue throughout winter

The intention is open for business next Spring

Look in to the encroachment on the right of way.

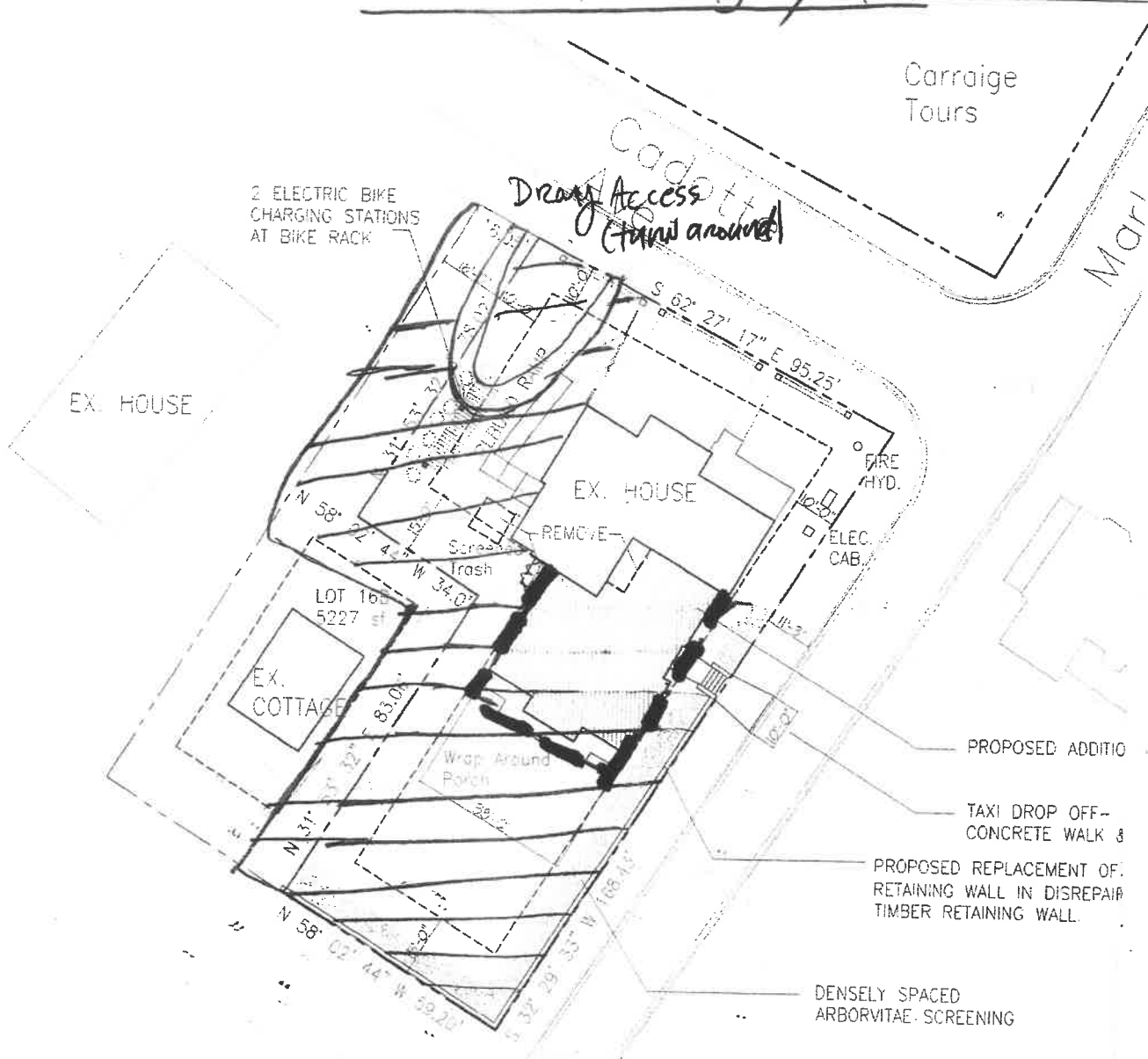
I am presenting this to the city next Wednesday

I will be available for any questions

Thank you for your time.

Andrew

Construction Staging Plan



RESIDENTIAL USE
 RE 43,560 sf / 7 = 6,223 sf
 = 2 ALLOWED, 1 ACTUAL
 = 6,409 sf SITE REMAINING

RESIDENTIAL USE
 R: 4x500 = 2,000 sf < 6,409 sf

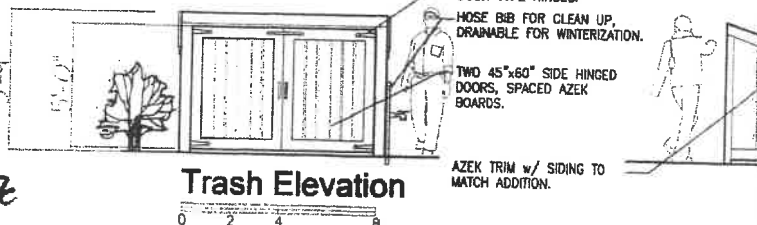
RESIDENTIAL USE
 R 450 sf OF BUILDING AREA
 EL USE.

BUILDING AREAS:
 50 = 17.5 ALLOWED
 = 17 ACTUAL

Staging Area
 for all construction materials, equipment, construction debris dumpsters, motor vehicles.

Fencing

Notes:
 all debris and trash stored on site



September 5, 2025

I'm writing this letter to inform both Council and the Planning Commission that Andrew Doud is allowed to make full use of my yard during his project. This includes storage, staging and dray delivery.

Andrew keeps me aware of the progress of his project on a regular basis.

Cresencia E May