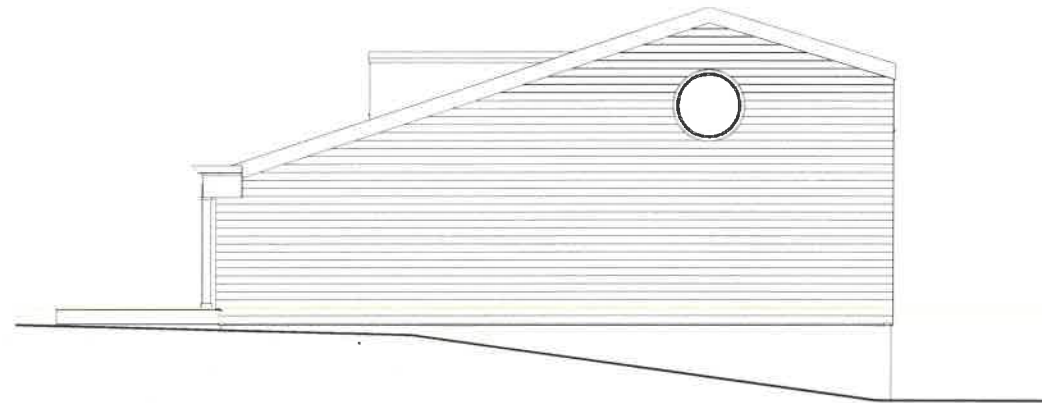
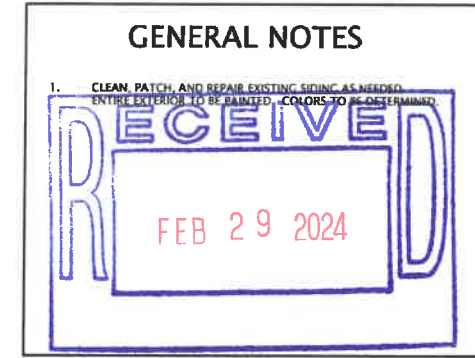
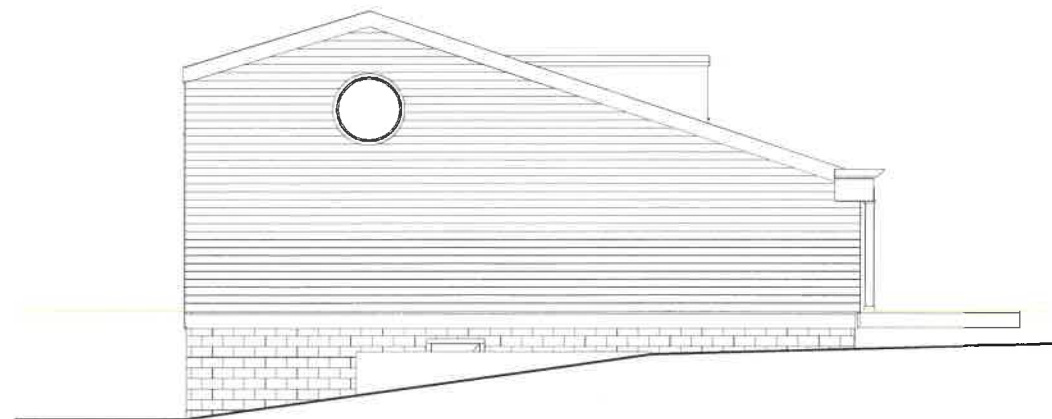


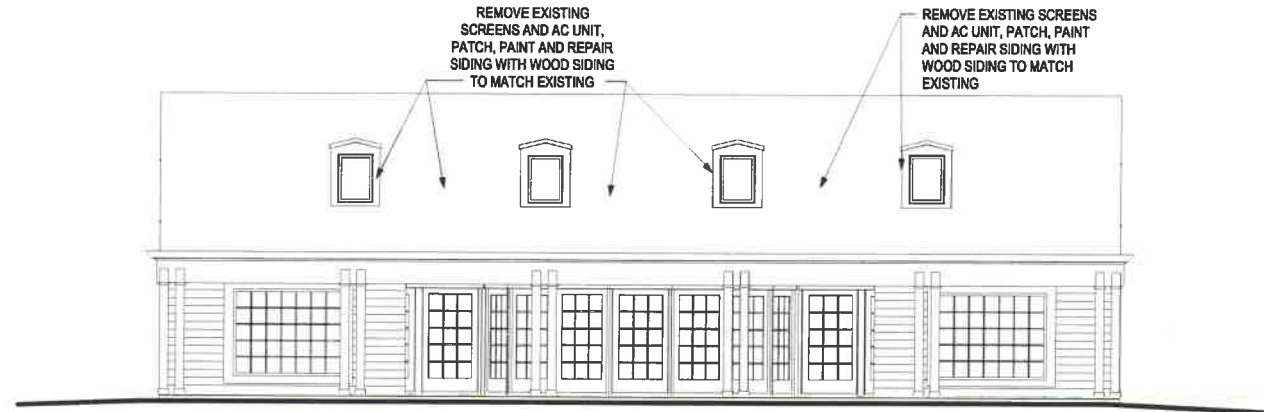
File No. MD23-021-018(H)
 Exhibit AA
 Date 2-29-24
 Initials KP



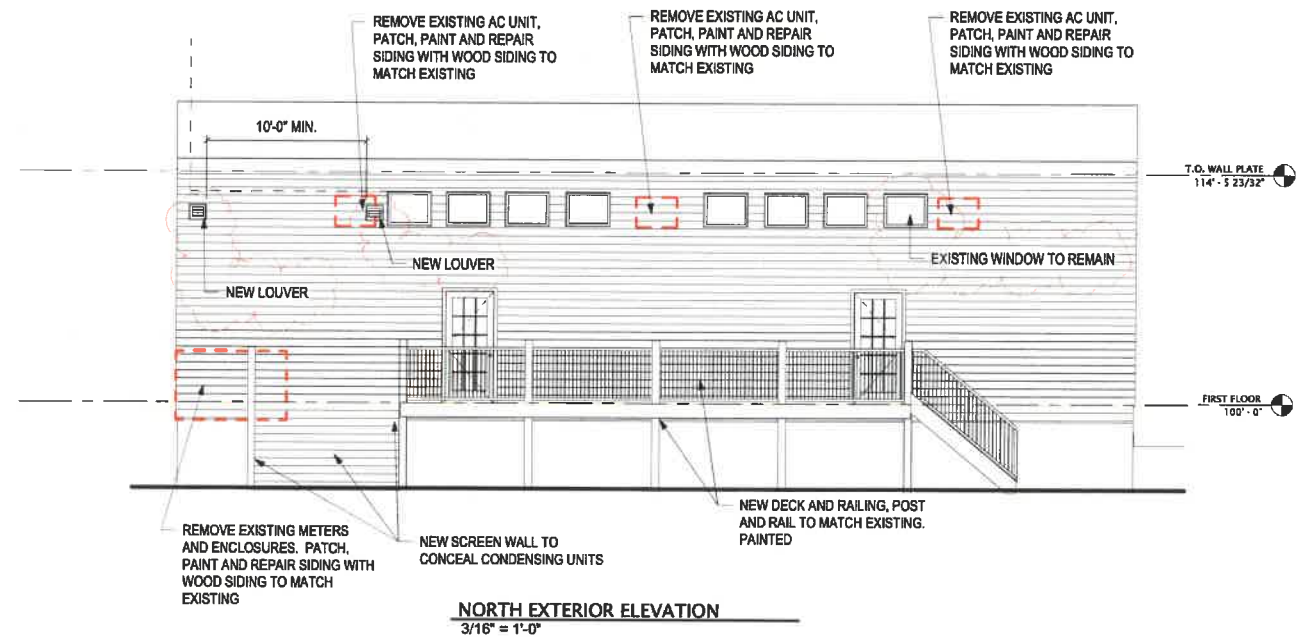
WEST EXTERIOR ELEVATION
 3/16" = 1'-0"



EAST EXTERIOR ELEVATION
 3/16" = 1'-0"



SOUTH EXTERIOR ELEVATION
 3/16" = 1'-0"



NORTH EXTERIOR ELEVATION
 3/16" = 1'-0"

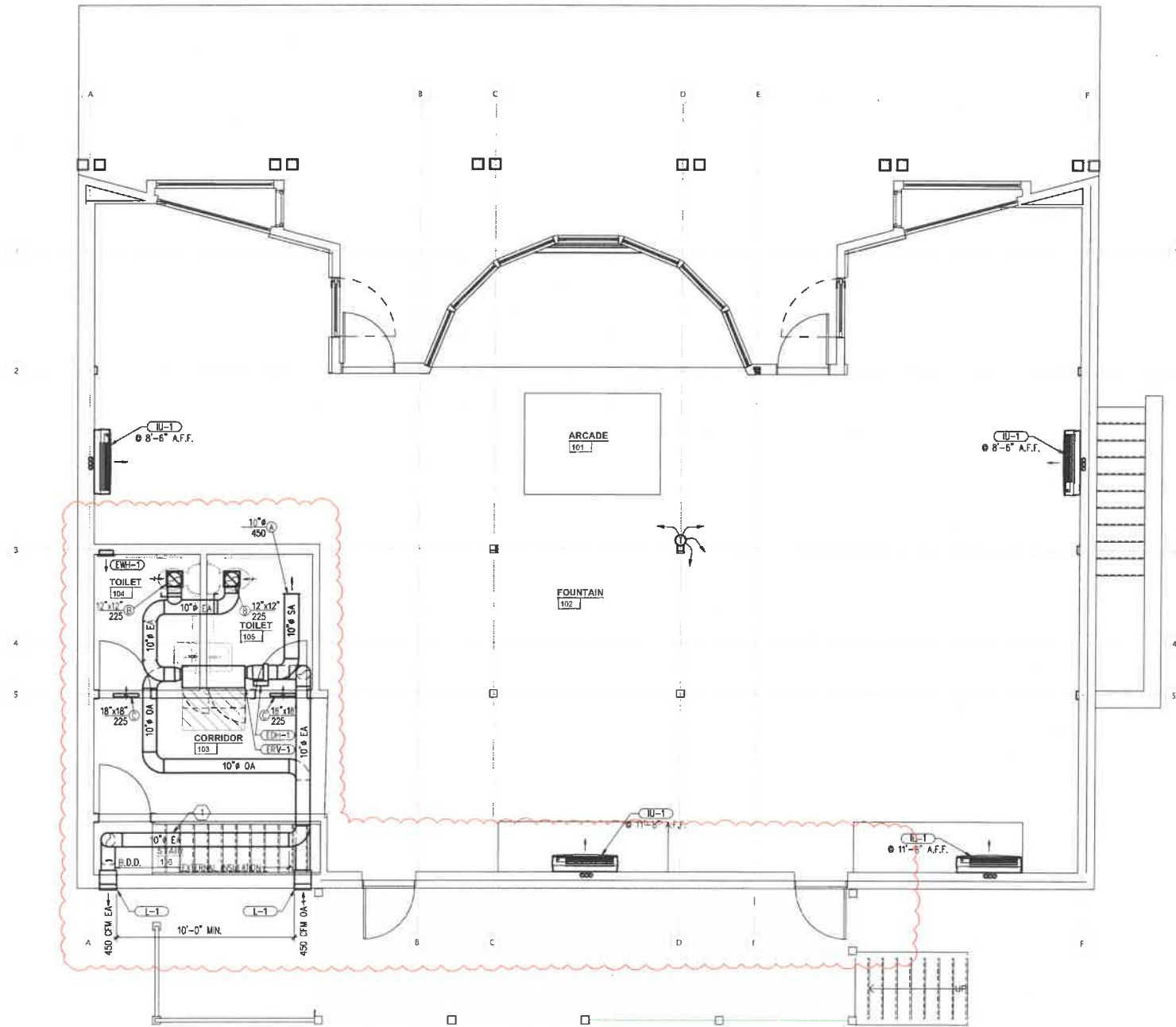
CAROUSEL ARCADE
 MACKINAC ISLAND, MICHIGAN

Design: Barry J. Polzin
 Drawn By: MRH
 Date Of Issue: 02/27/24

REVISION		
DATE	ISSUE BY	
2/27/24	3	

COPYRIGHT © 2021 BY BARRY J. POLZIN ARCHITECTS. ALL RIGHTS RESERVED.
 NO PART OF THIS DRAWING MAY BE REPRODUCED IN ANY FORM BY ELECTRONIC OR MECHANICAL STORAGE AND RETRIEVAL SYSTEMS WITHOUT WRITTEN PERMISSION FROM BARRY J. POLZIN ARCHITECTS.

SHEET:
A3.0



FIRST FLOOR MECHANICAL PLAN

1/4" = 1' - 0"



KEY NOTES

- ROUTE EXHAUST DUCT AGAINST WALL, SHOWN OFFSET FOR CLARITY.

GENERAL NOTES

- PROVIDE ESCUTCHEON PLATES FOR ALL PIPES AND FLASHINGS FOR DUCTS PASSING THROUGH WALLS, FLOORS AND CEILINGS. WHERE DUCTS PASS EXPOSED THROUGH FINISHED INTERIOR PARTITIONS AND EXTERIOR WALLS, CONCEAL SPACE BETWEEN CONSTRUCTION OPENING AND DUCT OR DUCT-PLUS-INSULATION WITH SHEET METAL FLANGES OF SAME GAUGE AS DUCT. OVERLAP OPENING ON ALL SIDES BY AT LEAST 1-1/2".
- CONTRACTOR SHALL VERIFY ALL EXISTING AND NEW DIMENSIONS AND CONDITIONS.
- ANY QUESTIONS, CLARIFICATIONS, DISCREPANCIES, ETC. SHALL BE BROUGHT TO THE ATTENTION OF THE ARCHITECT/ENGINEER IMMEDIATELY.
- COORDINATE ALL PROJECT REQUIREMENTS WITH ALL TRADES.
- ALL MATERIALS SHALL BE NEW AND OF GOOD QUALITY. ALL WORKMANSHIP SHALL BE NEAT AND SKILLED, AND SHALL CONFORM TO THE REQUIREMENTS OF ALL APPLICABLE STATE AND LOCAL CODES.
- PROVIDE PROPER BACKING FOR ALL FIXTURES, EQUIPMENT, AND COMPONENTS. COORDINATE WITH ALL TRADES AND OWNER.
- VERIFY ALL LAYOUTS, DIMENSIONS, CLEARANCES, AND METHODS WITH EQUIPMENT SUPPLIERS AND ALL TRADES. COORDINATE WITH OWNER FOR REQUIREMENTS PERTAINING TO ALL OWNER FURNISHED EQUIPMENT.
- CONTRACTORS SHALL SUBMIT, REVIEW, AND COORDINATE ALL EXISTING BUILDING SHUTDOWNS WITH OWNER PRIOR TO SCHEDULING AND OPERATIONS.
- PENETRATIONS OF FLOOR/CEILING ASSEMBLIES AND ASSEMBLIES REQUIRED TO HAVE A FIRE-RESISTANCE RATING SHALL BE PROTECTED IN ACCORDANCE WITH THE INTERNATIONAL BUILDING CODE.



CAROUSEL ARCADE

MACKINAC, MICHIGAN

Design: DWL
 Drawn By: DWL
 Date of Issue: 9/6/23

REVISION			
DATE	ISSUE BY	RFI #	UPEA
12/7/23	RFI #1		UPEA
1/9/24	RFI #67		UPEA
2/15/24	RFI #26		UPEA
2/27/24	3		UPEA

CONTRACT & JOB BY BARRY J. POLZIN ARCHITECTS. ALL RIGHTS RESERVED.
 NO PART OF THIS DRAWING MAY BE REPRODUCED OR TRANSMITTED IN ANY FORM OR BY ANY MEANS, INCLUDING PHOTOCOPYING, RECORDING, OR BY ANY INFORMATION STORAGE AND RETRIEVAL SYSTEM, WITHOUT THE WRITTEN PERMISSION FROM BARRY J. POLZIN ARCHITECTS.

SHEET:
M1.2