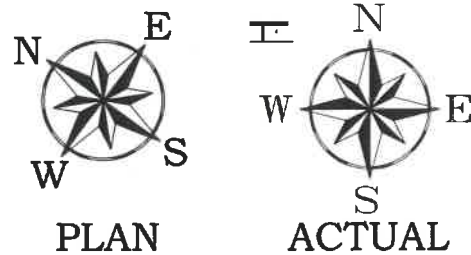
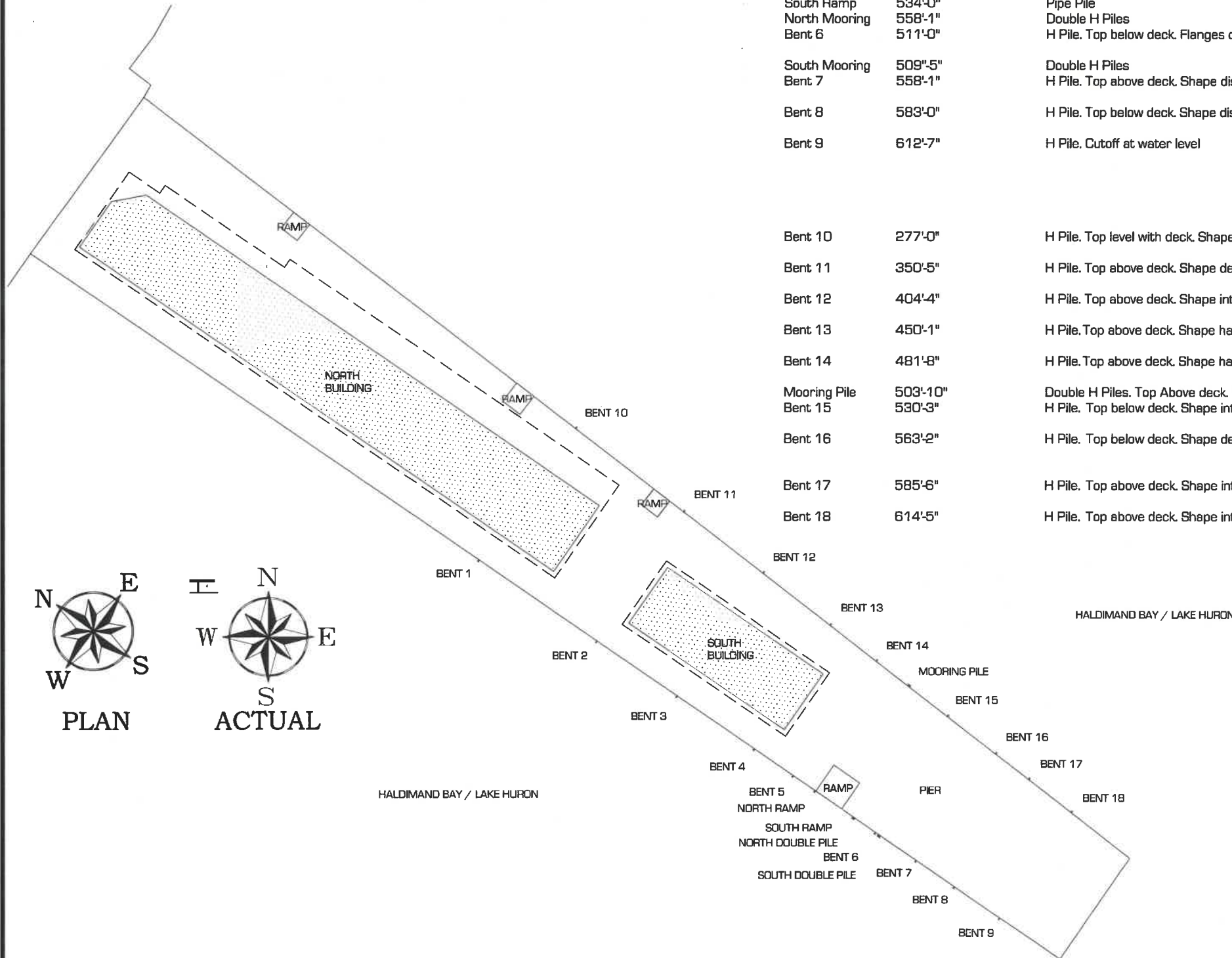
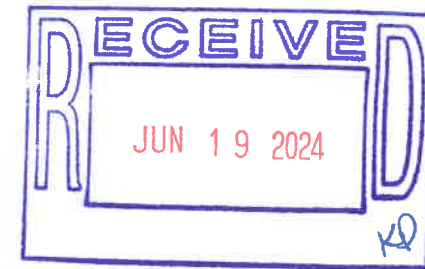


Table One: Summary of Repairs to Laetral Bracing

Bent / Pile Description	South Offset from North End of North Building	Pile Description	Battered Pile Presence	Recommended Repairs
Bent 1	272'-1"	H Pile. Top above deck. Shape intact.	yes	shim, reconnect battered pile to vertical pile, add plate and HP12x53 section
Bent 2	349'-2"	H Pile. Top below deck. Shape has minor distortion	yes	shim, reconnect battered pile to vertical pile, add plate and HP12x53 section
Bent 3	401'-6"	S Pile with steel plates attached to the flanges. Shape distorted	yes	shim, reconnect battered pile to vertical pile, cut off damaged section (16"±) add plate and HP12x53 section
Bent 4	477'-4"	H Pile. Top below deck. Shape intact.	yes	cut off damaged section, install new section of vertical pile, shim, reconnect battered pile to vertical pile
Bent 5	491'-8"	H Pile. Top below deck. Shape distorted.	yes	cut off damaged section (42"±), add plate and new HP12x53 section' shim, reconnect battered pile to vertical pile
North Ramp	517'-0"	Double Pipe piles	no	none
South Ramp	534'-0"	Pipe Pile	no	none
North Mooring	558'-1"	Double H Piles	no	none
Bent 6	511'-0"	H Pile. Top below deck. Flanges cut at different levels	yes	cut off damaged section (cut to outer flange), add plate and new HP12x53, shim, reconnect battered pile to vertical pile
South Mooring	509'-5"	Double H Piles	no	none
Bent 7	558'-1"	H Pile. Top above deck. Shape distorted.	yes	cut off damaged section (66"±), add plate and new HP12x53, shim, reconnect battered pile to vertical pile
Bent 8	583'-0"	H Pile. Top below deck. Shape distorted.	yes	cut off damaged section (36"±), add plate and new HP12x53 section, shim, reconnect battered pile to vertical pile
Bent 9	612'-7"	H Pile. Cutoff at water level	no	cut off damaged section (6"±), add plate and new HP12x53 section, shim, reconnect battered pile to vertical pile if a battered pile is located. Welding under watering will be required.
Bent 10	277'-0"	H Pile. Top level with deck. Shape has minor deformation..	yes	add plate and new HP12x53 section, shim, reconnect battered pile to vertical pile
Bent 11	350'-5"	H Pile. Top above deck. Shape deformed.	yes	add plate and new HP12x53 section, shim, reconnect battered pile to vertical pile
Bent 12	404'-4"	H Pile. Top above deck. Shape intact.	yes	add plate and new HP12x53 section, shim, reconnect battered pile to vertical pile
Bent 13	450'-1"	H Pile. Top above deck. Shape has minor deformation	yes	cut off damaged section (18"±), add plate and new HP12x53 section, shim, reconnect battered pile to vertical pile
Bent 14	481'-8"	H Pile. Top above deck. Shape has minor deformation	yes	cut off damaged section down to old joint (36"±), shim, reconnect battered pile to vertical pile
Mooring Pile	503'-10"	Double H Piles. Top Above deck. Shape minor deformation	no	none
Bent 15	530'-3"	H Pile. Top below deck. Shape intact.	yes	add plate and new HP12x53 section, shim, reconnect battered pile to vertical pile
Bent 16	563'-2"	H Pile. Top below deck. Shape deformed	yes	cut off damaged section (16"±), install plate and new HP12x53, shim, reconnect battered pile to vertical pile. Under water welding may be required
Bent 17	585'-6"	H Pile. Top above deck. Shape intact.	yes	install plate and new HP12x53 section, shim, reconnect battered pile to vertical pile
Bent 18	614'-5"	H Pile. Top above deck. Shape intact.	yes	install plate and new HP12x53 section, shim, reconnect battered pile to vertical pile.



SITE LAYOUT
NORTH SCALE: 1/16" = 1'-0"



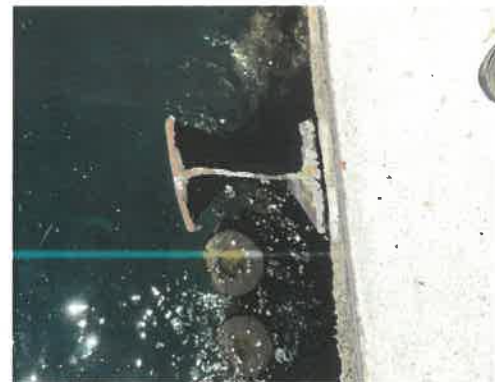
File No. C24-012-040(H)
Exhibit C
Date 6-19-24
Initials KP

David D. Hohmeyer, P.E.
Michigan License No. 01032829
June 19, 2024

RELEASE DATES	
6-13-24	PERMIT / CONSTRUCTION
SOILS & STRUCTURES	
6480 Grand Haven Road Muskegon, Michigan 49441 (800) 933-3959 Fax (231) 798-1383	
CLIENT:	
MACKINAC ISLAND FERRY COMPANY	
587 North State Street St. Ignace, Michigan 49781 800-638-9892	
PROJECT:	
MAIN PIER REPAIRS MACKINAC ISLAND CITY OF MACKINAC ISLAND MACKINAC COUNTY MICHIGAN	
Drawn by: <u>D. HOHMEYER, P.E.</u> Date: <u>5-28-24</u>	Checked by: <u>D. HOHMEYER, P.E.</u> Date: <u>5-28-24</u>
Project No. <u>2023-0657</u>	Sheet No. <u>PR1</u> Sequence No. <u>1 of 4</u>



1 BENT 1
PR2 SCALE 1/4" = 1'-0"



2 BENT 2
PR2 SCALE 1/4" = 1'-0"



3 BENT 3
PR2 SCALE 1/4" = 1'-0"



4 BENT 4
PR2 SCALE 1/4" = 1'-0"



5 BENT 5
PR2 SCALE 1/4" = 1'-0"



6 NORTH RAMP MOORING PILE
PR2 SCALE 1/4" = 1'-0"



7 SOUTH RAMP MOORING PILE
PR2 SCALE 1/4" = 1'-0"



8 NORTH DOUBLE MOORING PILE
PR2 SCALE 1/4" = 1'-0"



9 BENT 6
PR2 SCALE 1/4" = 1'-0"



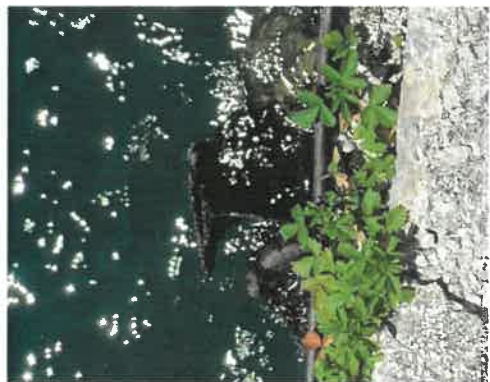
10 SOUTH DOUBLE MOORING PILE
PR2 SCALE 1/4" = 1'-0"



11 BENT 7
PR2 SCALE 1/4" = 1'-0"



12 BENT 8
PR2 SCALE 1/4" = 1'-0"



13 BENT 9
PR2 SCALE 1/4" = 1'-0"

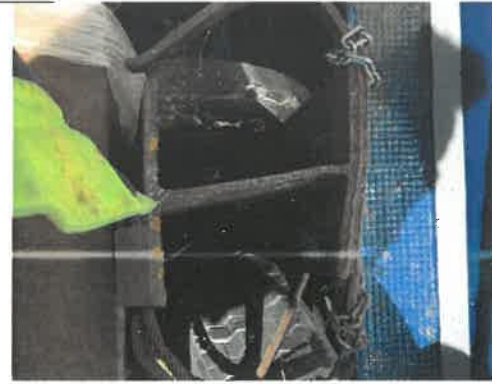
RELEASE DATES		
6-10-24 PERMIT & CONSTRUCTION		
SOILS & STRUCTURES		
6480 Grand Haven Road Muskegon, Michigan 49441 (800) 833-3959 Fax (231) 798-1383		
CLIENT:		
MACKINAC ISLAND FERRY COMPANY		
587 North State Street St. Ignace, Michigan 49781 800-638-9892		
PROJECT:		
MAIN PIER REPAIRS MACKINAC ISLAND CITY OF MACKINAC ISLAND MACKINAC COUNTY MICHIGAN		
Drawn by: D. HOHMEYER, P.E.	Date: 5-28-24	
Checked by: D. HOHMEYER, P.E.	Date: 5-28-24	
Project No. 2023-0657	Sheet No. PR2	Sequence No. 2 of 4

David D. Hohmeyer, P.E.
Michigan License No. 01032829
June 2024





2 BENT 11
PR3 SCALE 1/4" = 1'-0"



3 BENT 12
PR3 SCALE 1/4" = 1'-0"



4 BENT 13
PR3 SCALE 1/4" = 1'-0"



5 BENT 14
PR3 SCALE 1/4" = 1'-0"



7 BENT 15
PR3 SCALE 1/4" = 1'-0"



8 BENT 16
PR3 SCALE 1/4" = 1'-0"



9 BENT 17
PR3 SCALE 1/4" = 1'-0"



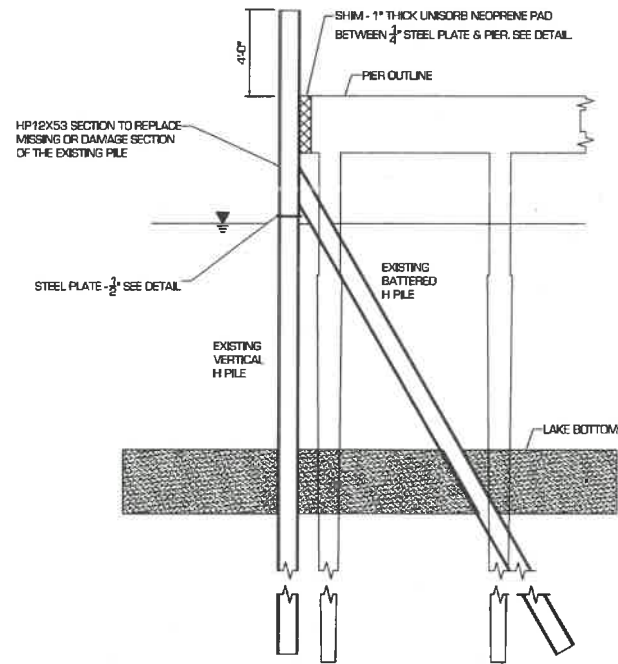
10 BENT 18
PR3 SCALE 1/4" = 1'-0"



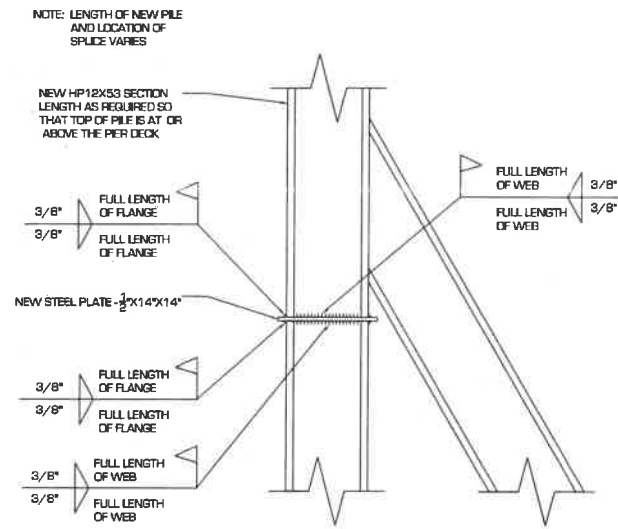
6 DOUBLE MOORING PILES
PR3 SCALE 1/4" = 1'-0"

RELEASE DATES		
6-10-24 PERMIT & CONSTRUCTION		
SOILS & STRUCTURES		
6480 Grand Haven Road Muskegon, Michigan 49441 (800) 933-3959 Fax (231) 798-1383		
CLIENT:		
MACKINAC ISLAND FERRY COMPANY		
587 North State Street St. Ignace, Michigan 49781 800-638-9892		
PROJECT:		
MAIN PIER REPAIRS MACKINAC ISLAND CITY OF MACKINAC ISLAND MACKINAC COUNTY MICHIGAN		
Drawn by: D. HOHMEYER, P.E.	Date: 5-28-24	
Checked by: D. HOHMEYER, P.E.	Date: 5-28-24	
Project No.	Sheet No.	Sequence No.
2023-0657	PR3	3 of 4

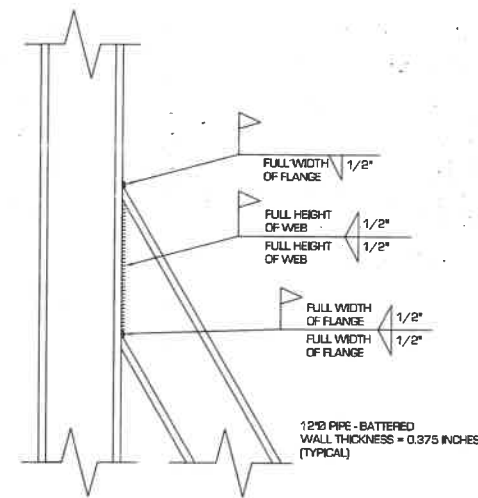
David J. Hohmeyer, P.E.
Michigan License No. 01032829
June 24, 2024



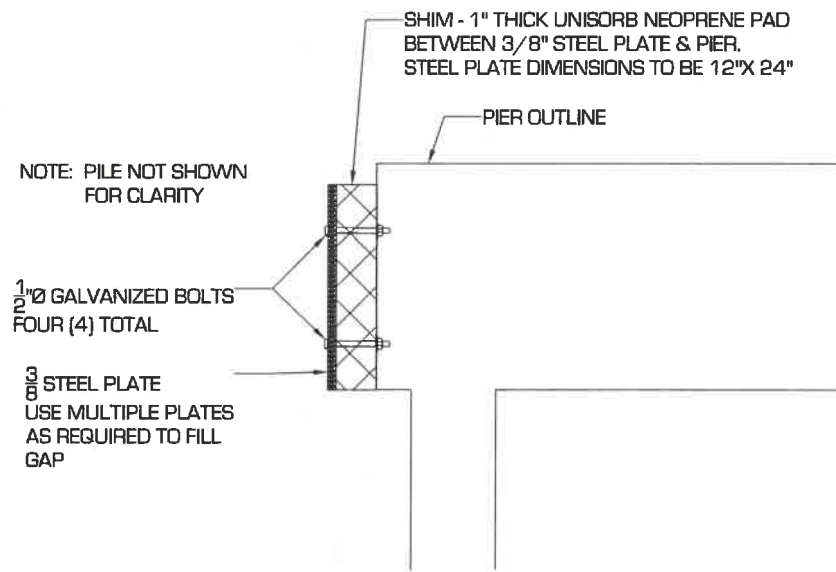
1 LATERAL CONTAINMENT / BENT REPAIR CROSS SECTION
PR4 SCALE: 1/4" = 1'-0"



2 LATERAL CONTAINMENT / BENT REPAIR
PR4 SCALE: 1" = 1'-0"



3 RECONNECTION OF BATTERED PILE TO VERTICAL PILE
PR4 SCALE: 1" = 1'-0"



4 SHIM / ABSORBER DETAIL
PR4 SCALE: 1" = 1'-0"

RELEASE DATES		
6-13-24 PERMIT & CONSTRUCTION		
SOILS & STRUCTURES		
6480 Grand Haven Road Muskegon, Michigan 49441 (800) 933-3959 Fax (231) 798-1383		
CLIENT:		
587 North State Street St. Ignace, Michigan 49781 800-638-9892		
PROJECT:		
MAIN PIER REPAIRS MACKINAC ISLAND CITY OF MACKINAC ISLAND MACKINAC COUNTY MICHIGAN		
Drawn by: D. HOHMEYER, P.E.	Date:	5-28-24
Checked by: D. HOHMEYER, P.E.	Date:	5-28-24
Project No.	Sheet No.	Sequence No.
2023-0657	PR4	4 of 4

David D. Hohmeyer, P.E.
Michigan License No. 01032829
June 2024