

File No. R423-011-089

Exhibit B

Date 9-26-23

Initials KP

RECEIVED
SEP 26 2023

LIBER 501 PAGE 395

PREPARED BY:
PORTER'S SURVEY P.C.
21529 M-68 HWY.
P. O. BOX 159
ONAWAY, MICHIGAN 49765
PH. (888) 733-8813

DEVELOPER:
MACKINAC ISLAND HOUSING CORPORATION
P.O. BOX 16
MACKINAC ISLAND, MI 49757

MACKINAC ISLAND HOUSING CORPORATION CONDOMINIUM (A SITE CONDOMINIUM)

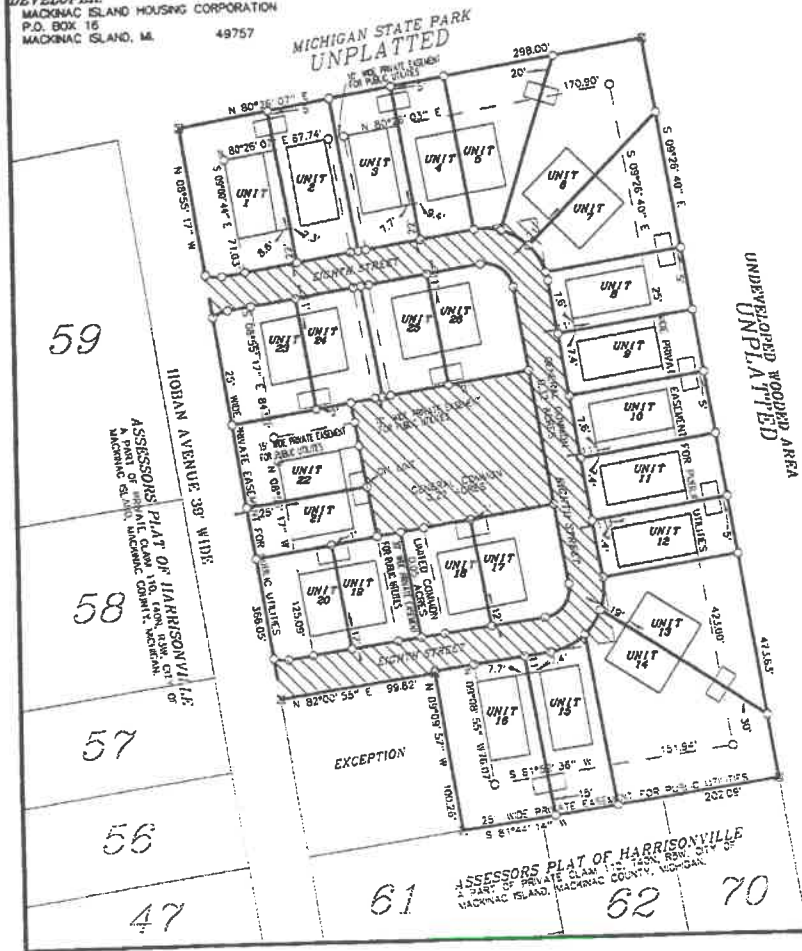
A PART OF LOT 80 OF ASSESSOR'S PLAT OF HARRISONVILLE,
CITY OF MACKINAC ISLAND, MACKINAC COUNTY, MICHIGAN.

TYPICAL SECTIONS UNITS 1-26
VERTICAL MEASUREMENTS ARE TO
BE MADE FROM EXISTING GRADE
(NO SLOPE)

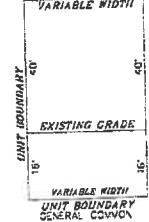
UNIT AREAS

UNIT	AREA	ACREAGE
1	5622.1 sq. ft.	0.13 acres
2	3890.6 sq. ft.	0.09 acres
3	3903.4 sq. ft.	0.09 acres
4	3365.2 sq. ft.	0.08 acres
5	4344.6 sq. ft.	0.10 acres
6	6573.5 sq. ft.	0.15 acres
7	4824.7 sq. ft.	0.11 acres
8	3444.0 sq. ft.	0.08 acres
9	3446.3 sq. ft.	0.08 acres
10	3449.0 sq. ft.	0.08 acres
11	3451.7 sq. ft.	0.08 acres
12	3179.7 sq. ft.	0.07 acres
13	5567.9 sq. ft.	0.13 acres
14	8794.6 sq. ft.	0.19 acres
15	4107.8 sq. ft.	0.09 acres
16	5921.5 sq. ft.	0.14 acres
17	3616.3 sq. ft.	0.08 acres
18	3081.2 sq. ft.	0.07 acres
19	3041.8 sq. ft.	0.07 acres
20	3313.7 sq. ft.	0.08 acres
21	2556.4 sq. ft.	0.06 acres
22	4154.0 sq. ft.	0.10 acres
23	3971.3 sq. ft.	0.09 acres
24	3083.9 sq. ft.	0.07 acres
25	3058.3 sq. ft.	0.07 acres
26	3650.3 sq. ft.	0.08 acres
TOTAL		2.46 ACRES

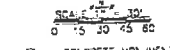
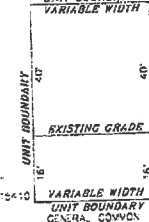
TOTAL PROJECT AREA = 3.01 ACRES
GENERAL COMMON AREA = 0.55 ACRES
LIMITED COMMON AREA = 0.00 ACRES
TOTAL UNIT AREA = 2.46 ACRES



LONGITUDINAL SECTION
GENERAL COMMON
UNIT BOUNDARY
VARIABLE WIDTH



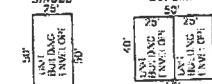
TRANSVERSE SECTION
GENERAL COMMON
UNIT BOUNDARY
VARIABLE WIDTH



— = CONCRETE MONUMENT
○ = 1/2" ROD & CAP 1" x 10"

▨ = GENERAL COMMON AREA

BUILDING ENVELOPE TYPICALS



STORAGE SHED



Delmer E. Porter 12/03/01
DELMER E. PORTER P.S. # 15410 DATE

**SITE PLAN
(CONTINUED)**

AS-BUILT 12/01/2001

SHEET 3 OF 4

1

**SINGLE FAMILY HOMES
MACKINAC ISLAND HOUSING CORP
MARSHALL ST
MACKINAC ISLAND, 49757**

ISSUED:

9/26/2023

DESCRIPTION:

NEW SINGLE FAMILY HOMES SITE PLAN LOCATIONS.

SCALE: NTS



PLAN NOTES

- ① EXISTING SINGLE FAMILY UNIT.
- ② EXISTING DUPLEX UNIT.
- ③ EXISTING SINGLE FAMILY UNIT AT UNIT #11.
- ④ EXISTING SINGLE FAMILY UNIT AT UNIT #12.
- ⑤ EXISTING SINGLE FAMILY UNIT AT UNIT #15.
- ⑥ EXISTING SINGLE FAMILY UNIT AT UNIT #16.
- ⑦ EXISTING ACCESSORY BUILDING.
- ⑧ PROPOSED NEW ACCESSORY BUILDING FOR NEW SINGLE FAMILY UNITS. BUILDING TO SERVE TWO SINGLE FAMILY UNITS.

GENERAL NOTES

1. NEIGHBORHOOD IS EXISTING AND HAS BEEN GRADED.
2. MINIMAL ALTERATION TO EXISTING TOPOGRAPHY FOR GRADING AWAY FROM NEW SINGLE FAMILY UNITS.
3. NEW SINGLE FAMILY UNITS ELEVATIONS TO BE 1'-6" ABOVE EXTERIOR GRADE.
4. MAXIMUM HEIGHT OF SINGLE FAMILY UNITS AT 20' FROM FINISH FLOOR.

