

1

# SINGLE FAMILY HOMES MACKINAC ISLAND HOUSING CORP MARSHALL ST MACKINAC ISLAND, 49757

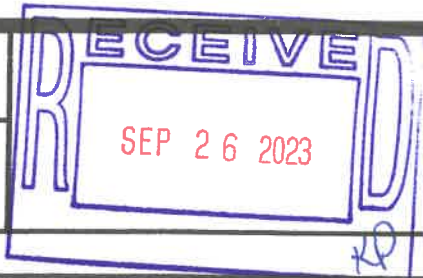
ISSUED:

9/26/2023

DESCRIPTION:

NEW SINGLE FAMILY HOMES SITE PLAN LOCATIONS.

SCALE: NTS



### PLAN NOTES

- ① EXISTING SINGLE FAMILY UNIT.
- ② EXISTING DUPLEX UNIT.
- ③ ~~EXISTING~~ SINGLE FAMILY UNIT AT UNIT #11.
- ④ ~~EXISTING~~ SINGLE FAMILY UNIT AT UNIT #12.
- ⑤ ~~EXISTING~~ / SINGLE FAMILY UNIT AT UNIT #15.
- ⑥ ~~EXISTING~~ / SINGLE FAMILY UNIT AT UNIT #16.
- ⑦ EXISTING ACCESSORY BUILDING.
- ⑧ PROPOSED NEW ACCESSORY BUILDING FOR NEW SINGLE FAMILY UNITS. BUILDING TO SERVE TWO SINGLE FAMILY UNITS.

### GENERAL NOTES

1. NEIGHBORHOOD IS EXITING AND HAS BEEN GRADED.
2. MINIMAL ALTERNATION TO EXISTING TOPOGRAPHY FOR GRADING AWAY FROM NEW SINGLE FAMILY UNITS.
3. NEW SINGLE FAMILY UNITS ELEVATIONS TO BE 1'-6" ABOVE EXTERIOR GRADE.
4. MAXIMUM HEIGHT OF SINGLE FAMILY UNITS AT 20' FROM FINISH FLOOR.

File No. R423.012.090

Exhibit B

Date 9.26.23

Initials KP

LIBER 501 PAGE 395

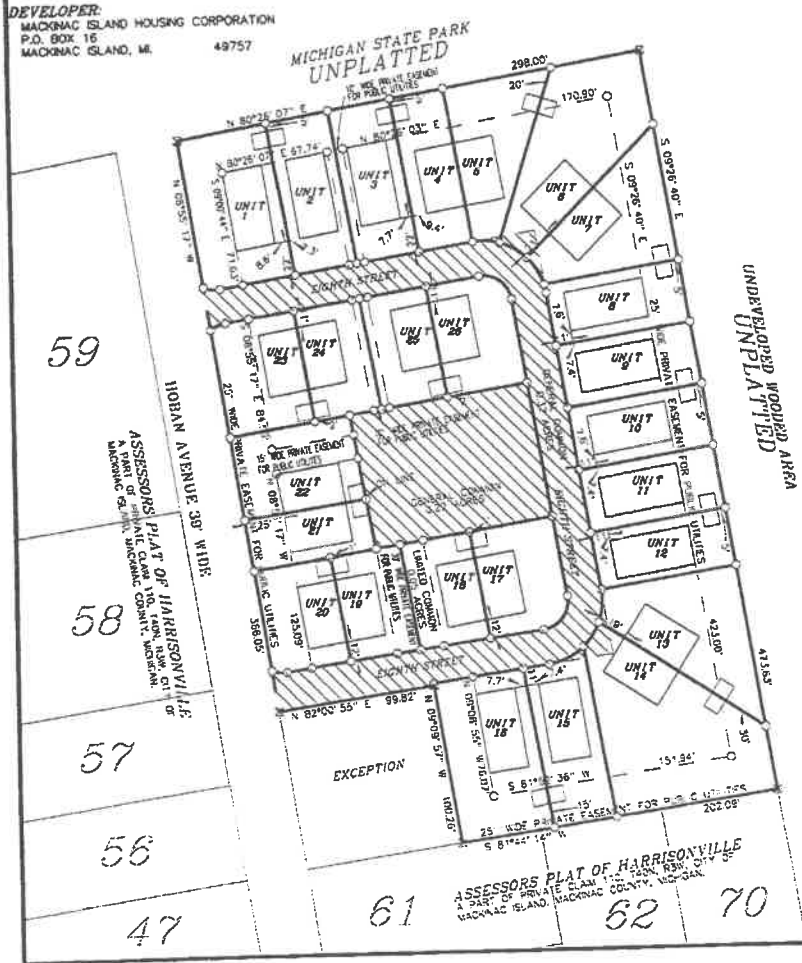
PREPARED BY:  
PORTER'S SURVEY P.C.  
21529 M-68 HWY.  
P. O. BOX 159  
ONAWAY, MICHIGAN 49765  
PH. (989) 733-8813

DEVELOPER:  
MACKINAC ISLAND HOUSING CORPORATION  
P.O. BOX 16  
MACKINAC ISLAND, MI 49757

### MACKINAC ISLAND HOUSING CORPORATION CONDOMINIUM (A SITE CONDOMINIUM)

A PART OF LOT 60 OF ASSESSOR'S PLAT OF HARRISONVILLE,  
CITY OF MACKINAC ISLAND, MACKINAC COUNTY, MICHIGAN.

TYPICAL SECTIONS UNITS 1-26  
VERTICAL MEASUREMENTS ARE TO  
BE MADE FROM EXISTING GRADE.  
(NO SCALE)

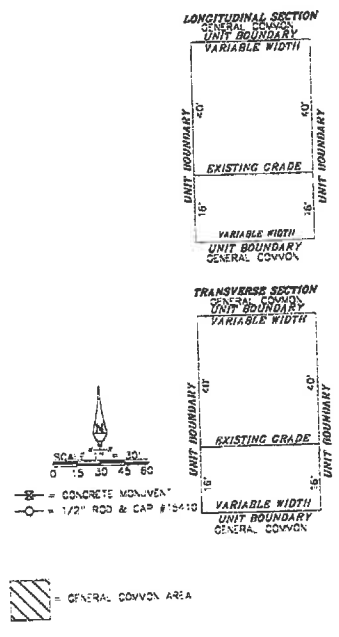


UNDEVELOPED WOODED AREA  
UNPLATTED

#### UNIT AREAS

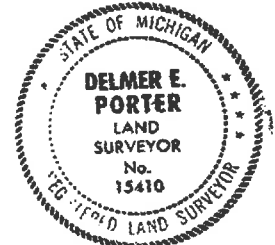
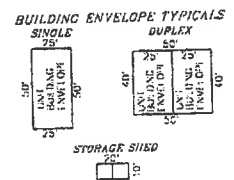
UNIT	AREA	ACREAGE
1	5622.1 sq. ft.	0.13 acres
2	3890.6 sq. ft.	0.09 acres
3	3903.4 sq. ft.	0.09 acres
4	3365.2 sq. ft.	0.08 acres
5	4344.6 sq. ft.	0.10 acres
6	6573.5 sq. ft.	0.15 acres
7	4824.7 sq. ft.	0.11 acres
8	3444.0 sq. ft.	0.08 acres
9	3446.3 sq. ft.	0.08 acres
10	3449.0 sq. ft.	0.08 acres
11	3451.7 sq. ft.	0.08 acres
12	3179.7 sq. ft.	0.07 acres
13	5567.9 sq. ft.	0.13 acres
14	8794.6 sq. ft.	0.20 acres
15	4107.8 sq. ft.	0.09 acres
16	5921.5 sq. ft.	0.14 acres
17	3816.3 sq. ft.	0.08 acres
18	3081.2 sq. ft.	0.07 acres
19	3041.8 sq. ft.	0.07 acres
20	3313.7 sq. ft.	0.08 acres
21	2596.4 sq. ft.	0.06 acres
22	4154.0 sq. ft.	0.10 acres
23	3911.3 sq. ft.	0.09 acres
24	3083.9 sq. ft.	0.07 acres
25	3058.3 sq. ft.	0.07 acres
26	3650.3 sq. ft.	0.08 acres
TOTAL =		2.46 ACRES

TOTAL PROJECT AREA = 3.01 ACRES  
GENERAL COMMON AREA = 0.55 ACRES  
LIMITED COMMON AREA = 0.00 ACRES  
TOTAL UNIT AREA = 2.46 ACRES



— = CONCRETE MON.-VEN.  
○ = 1/2" ROD & CAP #15410

— / — = GENERAL COMMON AREA



*Delmer E. Porter 12/03/01*  
DELMER E. PORTER P.S. # 15410 DATE

**SITE PLAN  
(CONTINUED)**

AS-BUILT 12/01/2001

SHEET 3 OF 4