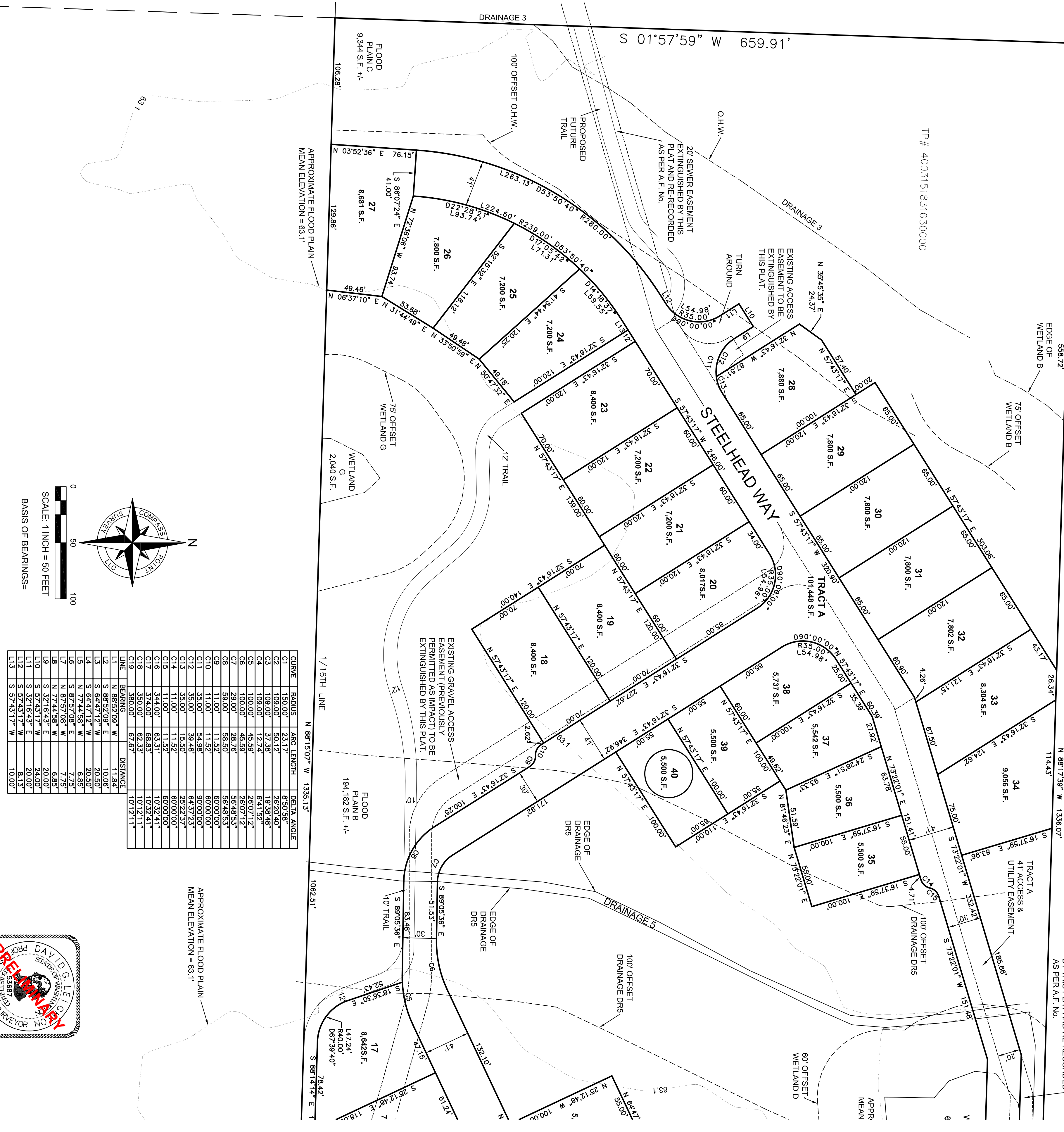


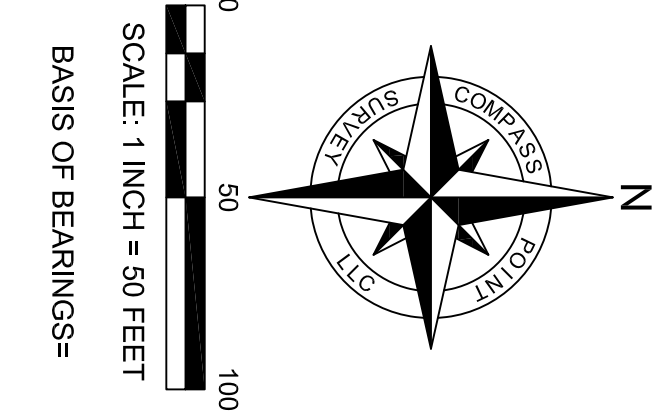
KAMM CREEK PRD

WITHIN THE CITY OF LYNDEN, WHATCOM COUNTY, WASHINGTON.

20' SEWER EASEMENT EXTINGUISHED
BY THIS PLAT AND RE-RECORDED
AS PER A.F. NO.



CURVE	RADIUS	ARC LENGTH	DELTA ANGLE
C1	150.00'	23.17'	8°50'58"
C2	109.00'	50.12'	26°20'40"
C3	109.00'	37.38'	19°38'48"
C4	109.00'	12.74'	6°41'52"
C5	100.00'	45.59'	26°07'12"
C6	100.00'	45.59'	26°07'12"
C7	29.00'	28.76'	56°48'53"
C8	59.00'	58.50'	56°48'53"
C9	11.00'	11.52'	60°00'00"
C10	11.00'	11.52'	60°00'00"
C11	35.00'	54.98'	90°00'00"
C12	35.00'	39.48'	64°37'23"
C13	35.00'	15.50'	25°22'37"
C14	11.00'	11.52'	60°00'00"
C15	11.00'	11.52'	60°00'00"
C16	344.00'	63.31'	10°32'41"
C17	374.00'	68.83'	10°32'41"
C18	350.00'	62.33'	10°12'11"
C19	380.00'	67.67'	10°12'11"



SHEET: 4 OF 4	DATE: 06/08/20	P.L.#: 164003-06
DRAWN BY: RL	REVIEWED BY: DL	DRAWING: KAMM CREEK PRD.DWG

**COMPASS POINT
SURVEY, LLC**
523 FRONT STREET, LYNDEN, WA 98264
PH: 360-354-8320 FAX: 360-354-8321

