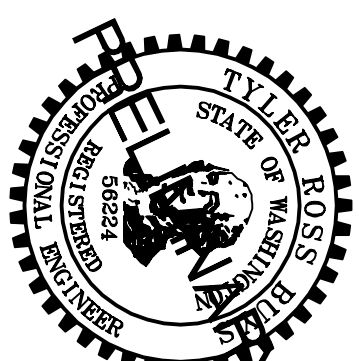
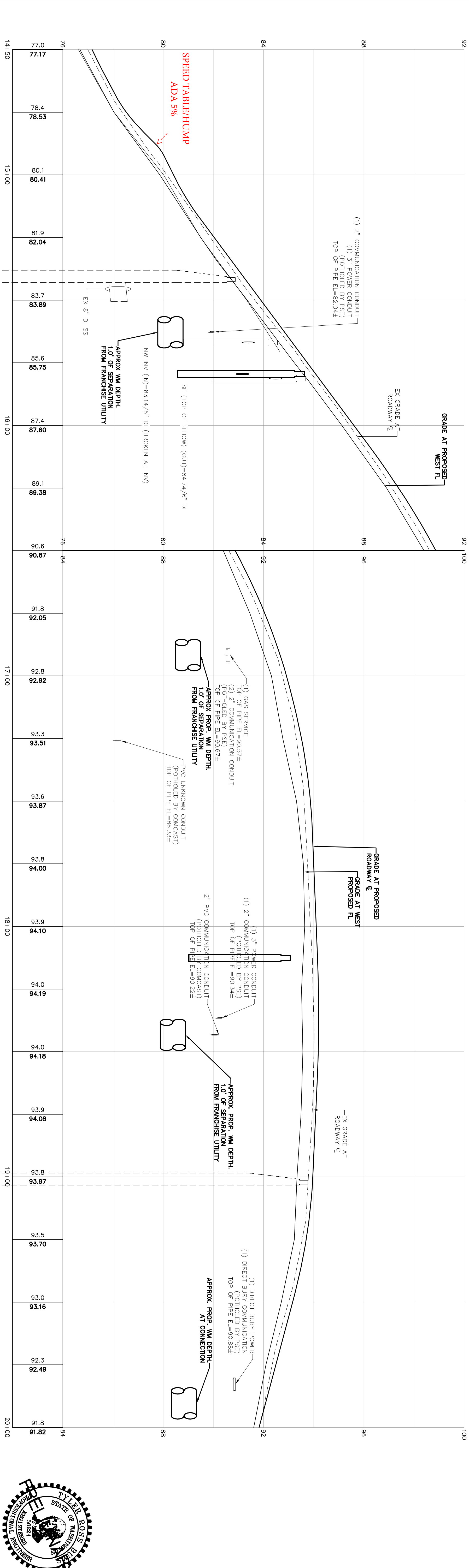


NOTE: PROPOSED STORM INFORMATION PROVIDED ON SHEETS 11-15



DESIGNED BY TB		DRAWN BY TB/LMH		CHECKED BY IDH/NZ	
		CITY OF LYNDEN 300 4TH STREET LYNDEN, WA 98264		17TH STREET EXTENSION FINAL DESIGN PLAN AND PROFILE WATER AND SEWER - STA 14+50 TO 20+00	
NO.	DATE	DESCRIPTION	BY	NO.	DATE
1	7/15/20	REBID CAR, UTILITY SCHEDULE, WATER MAIN SCHEDULE, HDS&WT			
DWG # 040371 PLOT		SCALE		DATE	
040371		H: 1"=20' V: 1"=2'		5/15/2020	
				SHEET 7 of 34	

REVISION No. 1