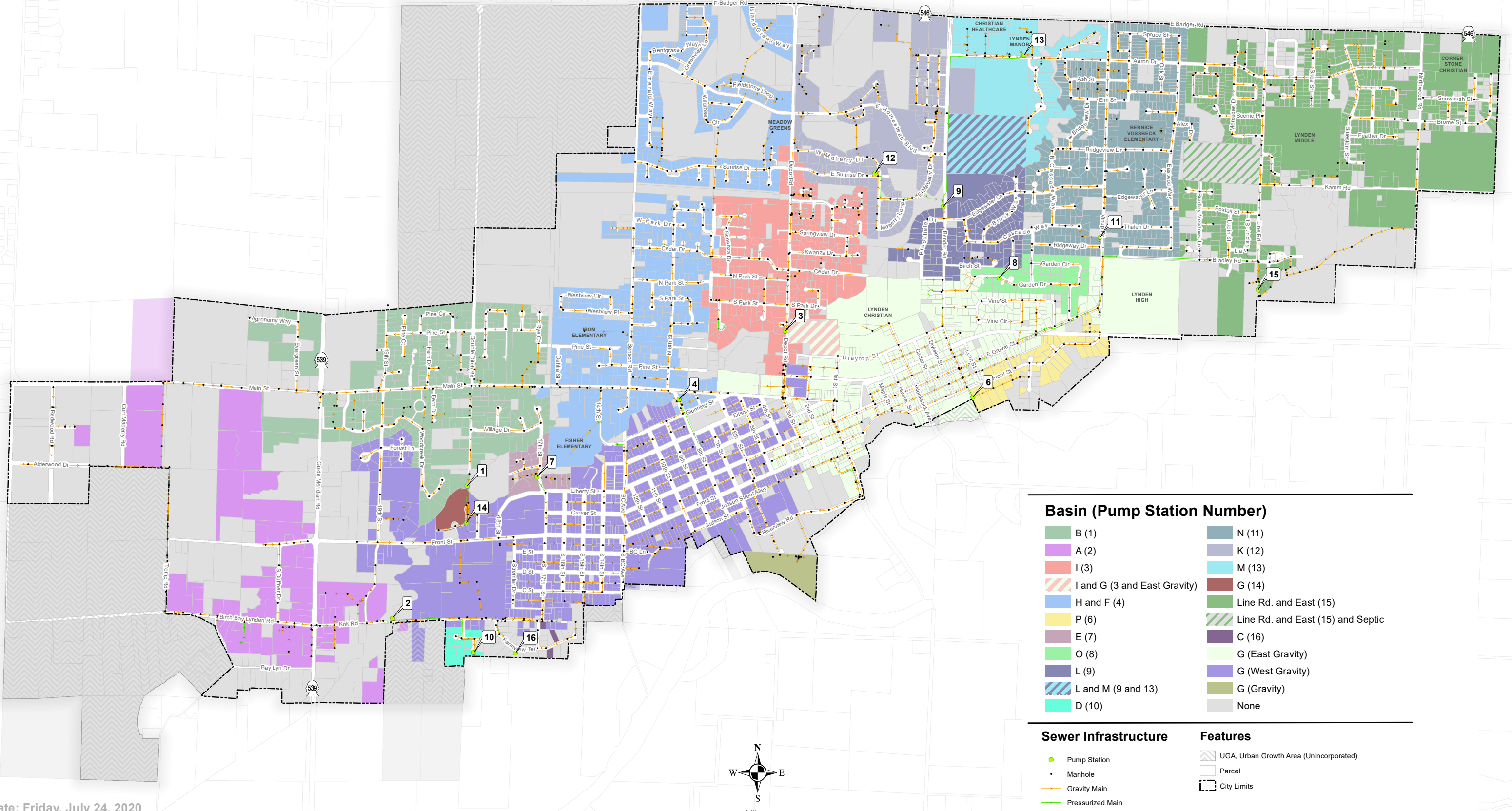


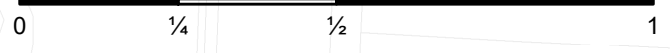
Pump Station Basins

City of Lynden



Basin (Pump Station Number)	
■ B (1)	■ N (11)
■ A (2)	■ K (12)
■ I (3)	■ M (13)
■ I and G (3 and East Gravity)	■ G (14)
■ H and F (4)	■ Line Rd. and East (15)
■ P (6)	■ Line Rd. and East (15) and Septic
■ E (7)	■ C (16)
■ O (8)	■ G (East Gravity)
■ L (9)	■ G (West Gravity)
■ L and M (9 and 13)	■ G (Gravity)
■ D (10)	■ None

Sewer Infrastructure	Features
● Pump Station	□ UGA, Urban Growth Area (Unincorporated)
● Manhole	□ Parcel
— Gravity Main	□ City Limits
— Pressurized Main	



Date: Friday, July 24, 2020

The City of Lynden has compiled this information for its own use and is not responsible for any use of this information by others and disclaims any warranty of merchantability or warranty of fitness for any particular purpose, either express or implied. The information found herein is provided simply as a courtesy to the public and is not intended for any third party use in any official, professional or other authoritative capacity. Persons using this information do so at their own risk and by such use agree to defend, indemnify and hold harmless the City of Lynden as to any claims, damages, liability, losses or suits arising out of such use. Contact the Whatcom County Assessor's Office (360-676-6790) for the most up to date parcel information.