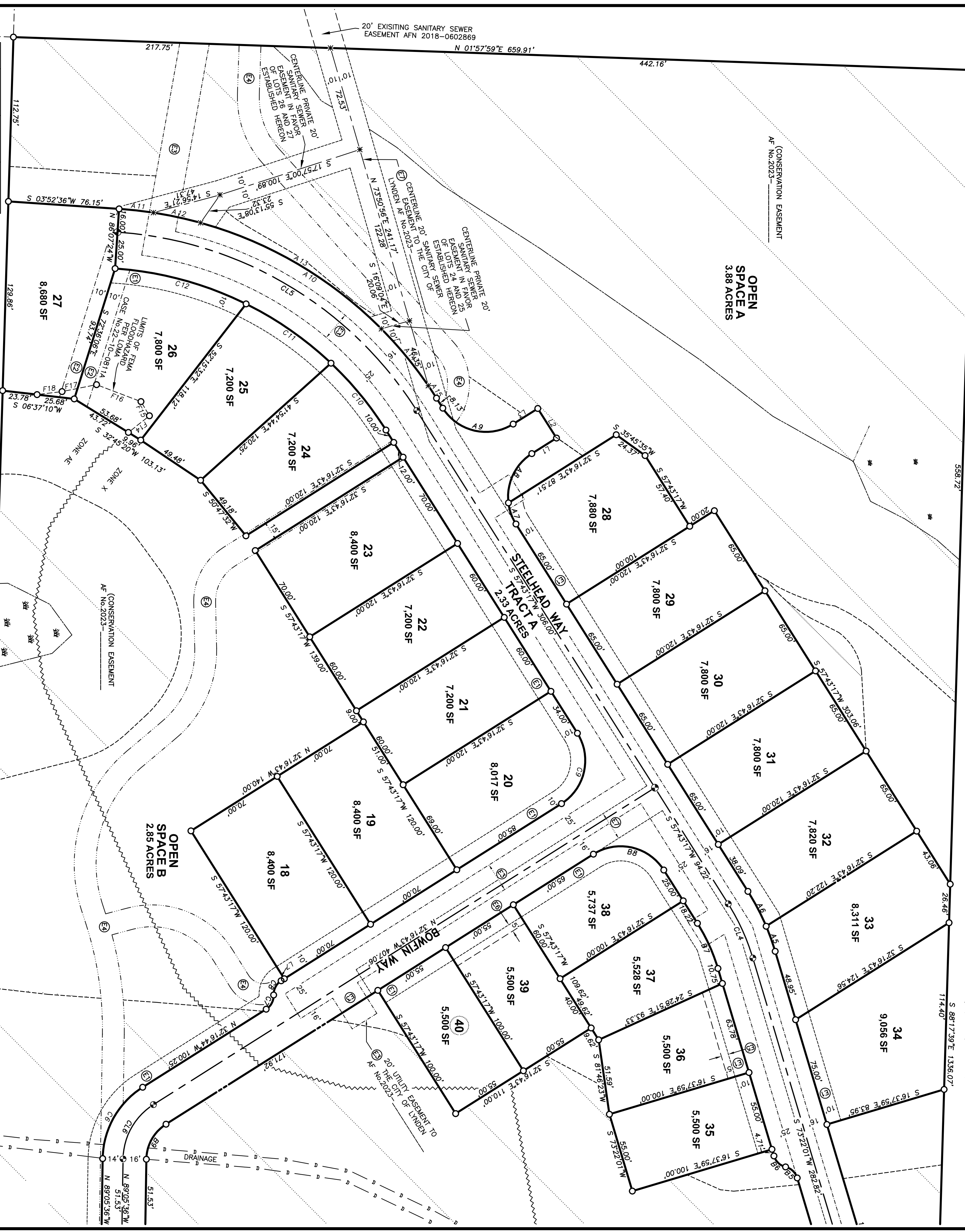


KAMM CREEK PRD

PORTION OF THE NE 1/4 SW 1/4, SECTION 15, TOWNSHIP 40 NORTH, RANGE 3 EAST OF W.M.
WITHIN THE CITY OF LYNDEN, WHATCOM COUNTY, WASHINGTON

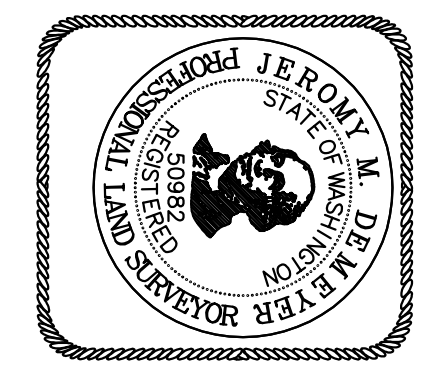


Curve	Radius	Length	Delta
A1	35.00"	54.98'	90°00'00"
A2	350.00"	62.33'	10°12'11"
A3	374.00"	68.83'	10°32'41"
A4	168.00"	53.13'	18°20'20"
A5	168.00"	19.30'	61°19'05"
A6	35.00"	12.50'	25°22'37"
A7	35.00"	19.48'	64°37'23"
A8	35.00"	54.98'	90°00'00"
A9	280.00"	263.13'	53°50'40"
A10	280.00"	23.67'	4°50'34"
A11	280.00"	33.17'	6°47'12"
A12	280.00"	145.49'	29°46'14"
A13	280.00"	50.57'	10°20'54"
A14	280.00"	10.24'	2°05'47"
A15	280.00"	10.24'	2°05'47"

Curve	Radius	Length	Delta
B1	35.00"	54.98'	90°00'00"
B2	380.00"	67.67'	10°12'11"
B3	344.00"	63.31'	10°32'41"
B4	136.00"	43.53'	18°20'20"
B5	11.00"	11.52'	60°00'00"
B6	11.00"	11.52'	60°00'00"
B7	125.00"	34.13'	15°38'44"
B8	35.00"	34.98'	90°00'00"
B9	29.00"	28.78'	56°48'55"
B10	100.00"	45.59'	26°07'12"
B11	35.00"	44.96'	90°00'00"
B12	130.00"	23.17'	17°05'42"
B13	130.00"	23.17'	17°05'42"
B14	35.00"	54.42'	89°04'59"

Curve	Radius	Length	Delta
C1	35.00"	55.54'	90°55'00"
C2	109.00"	37.38'	19°38'48"
C3	109.00"	32.74'	16°11'52"
C4	109.00"	32.74'	16°11'52"
C5	100.00"	61.81'	33°29'29"
C6	59.00"	58.50'	56°48'53"
C7	11.00"	11.52'	60°00'00"
C8	11.00"	11.52'	60°00'00"
C9	35.00"	54.98'	90°00'00"
C10	239.00"	59.55'	14°16'37"
C11	239.00"	71.31'	17°05'42"
C12	239.00"	93.74'	22°28'21"
C13	40.00"	47.24'	87°39'40"

Course	Bearing	Distance
E1	R=35.00"	L=54.98'
E2	101°22'21" W	CA 49°00'00"
E3	S 39°00'16" W	77.70'
E4	N 25°12'48" W	9.86'
E5	N 01°42'21" E	86.27'
E6	R=35.00"	L=57.92'
E7	101°14'48"	CA 94°49'09"
E8	R=344.00"	L=288.33'
E9	101°14'48"	CA 94°49'09"
E10	R=34.33"	L=54.33'
E11	101°14'48"	CA 94°49'09"
E12	N 21°47'38" W	24.37'
E13	N 21°47'38" W	24.37'
E14	S 06°54'04" E	17.29'



SE 1/4, SW 1/4.

EASEMENT INFORMATION:
 A 5' UTILITY EASEMENT TO THE CITY OF LYNDEN ADJACENT TO ALL INTERIOR LOT LINES SHALL BE ESTABLISHED HEREON.
 E1 = 10' UTILITY EASEMENT TO THE CITY OF LYNDEN ESTABLISHED HEREON (TYPICAL).
 E2 = 20' STORM DRAIN EASEMENT TO THE CITY OF LYNDEN PER AF No.2023-_____
 E3 = UTILITY EASEMENT TO THE CITY OF LYNDEN PER AF No.2023-_____
 E4 = 15' TRAIL EASEMENT TO THE CITY OF LYNDEN PER AF No.2023-_____
 E5 = 5' SANITARY SEWER EASEMENT IN FAVOR OF LOT 37
 E6 = 5' SANITARY SEWER EASEMENT IN FAVOR OF LOT 38 ESTABLISHED HEREON.
 E7 = 5' SANITARY SEWER EASEMENT IN FAVOR OF LOT 38 ESTABLISHED HEREON.
 SEE ALSO PUGET SOUND ENERGY EASEMENT AF No.2021-1203441 AND AMENDED PER AF No.2022-0901455.
 SEE SHEET 1 FOR SURVEYOR'S NOTES

PREPARED BY NORTHWEST SURVEYING & GPS, INC., 407 5TH STREET, LYNDEN, WA, 98264

(NORTH LINE SW 1/4 = S 88°20'10" E)

SCALE: 1 INCH = 40 FEET

BASIS OF BEARINGS = CITY OF LYNDEN SURVEY MONUMENT NETWORK