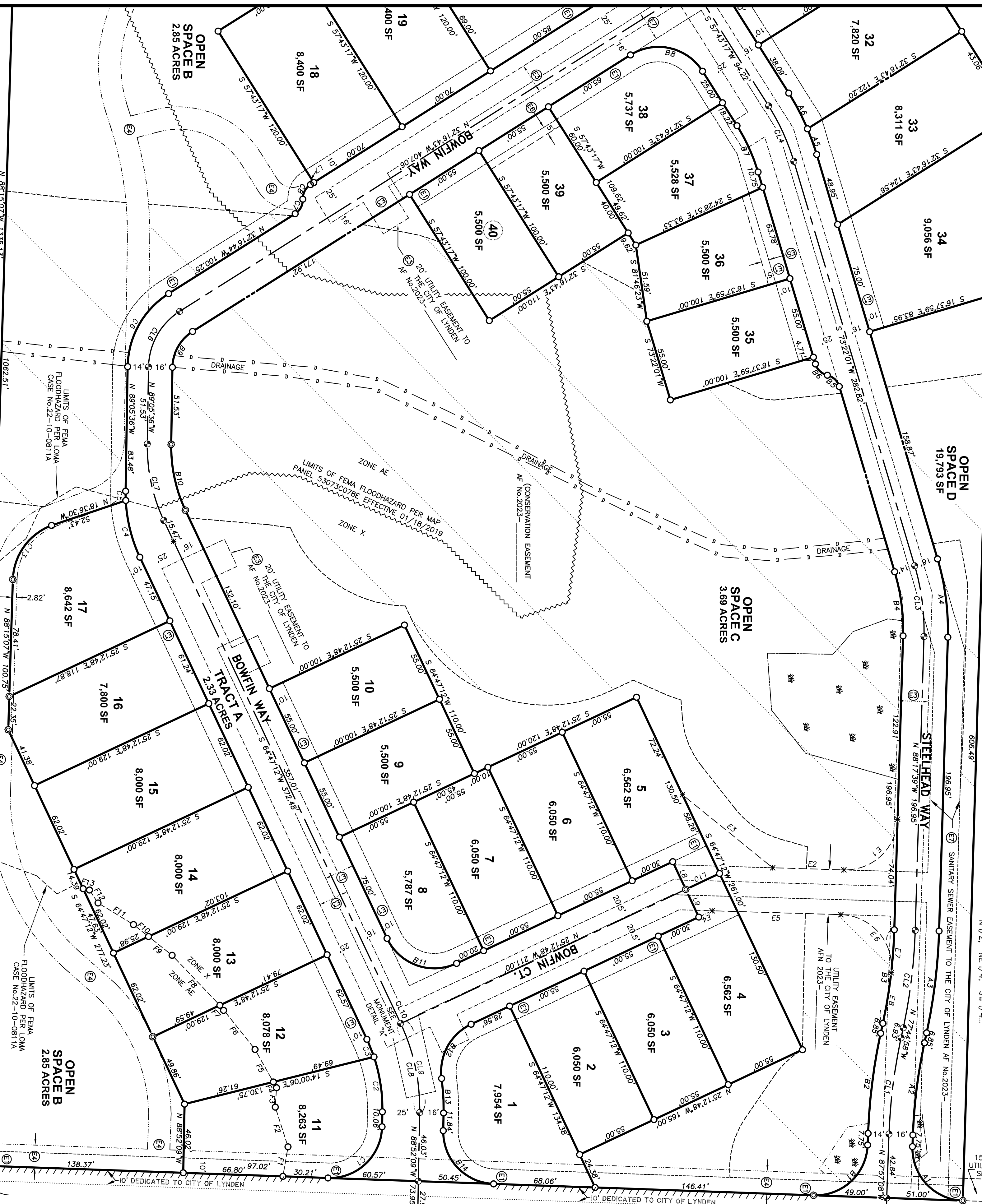


KAMM CREEK PRD
 PORTION OF THE NE 1/4 SW 1/4, SECTION 15, TOWNSHIP 40 NORTH, RANGE 3 EAST OF W.M.
 WITHIN THE CITY OF LYNDEN, WHATCOM COUNTY, WASHINGTON

SHEET 3 OF 4

10' R-O-W
 GRANT SEE
 SHEET 2

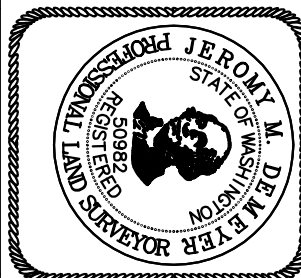


Curve	Radius	Length	Delta
A1	35.00'	54.98'	90°00'00"
A2	350.00'	62.33'	10°12'11"
A3	374.00'	68.83'	10°32'41"
A4	166.00'	33.13'	18°20'20"
A5	166.00'	28.30'	6°19'04"
A6	166.00'	72.00'	6°19'04"
A7	35.00'	39.48'	64°47'23"
A8	35.00'	39.48'	64°47'23"
A9	35.00'	54.98'	90°00'00"
A10	280.00'	263.13'	4°50'34"
A11	280.00'	23.67'	6°47'12"
A12	280.00'	145.49'	29°46'14"
A13	280.00'	50.57'	10°20'54"
A14	280.00'	10.24'	2°05'47"
A15	280.00'	10.24'	2°05'47"

Curve	Radius	Length	Delta
B1	35.00'	54.98'	90°00'00"
B2	360.00'	67.67'	10°12'11"
B3	344.00'	63.31'	10°32'41"
B4	136.00'	43.53'	18°20'20"
B5	11.00'	11.52'	60°00'00"
B6	124.00'	31.73'	60°00'00"
B7	124.00'	31.73'	60°00'00"
B8	35.00'	28.76'	56°48'53"
B9	23.00'	26.72'	26°07'12"
B10	100.00'	45.59'	26°07'12"
B11	35.00'	54.98'	90°00'00"
B12	35.00'	44.99'	72°50'18"
B13	150.00'	53.17'	6°50'58"
B14	35.00'	24.42'	89°04'59"

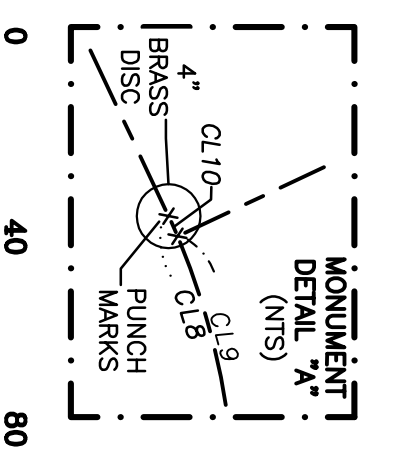
Curve	Radius	Length	Delta
C1	356.00'	65.00'	10°10'30"
C2	356.00'	65.89'	10°32'41"
C3	150.00'	48.01'	18°20'20"
C4	150.00'	40.95'	15°38'44"
C5	284.00'	248.10'	3°53'04"
C6	453.00'	44.48'	56°35'01"
C7	134.00'	67.87'	26°07'12"
C8	134.00'	61.50'	26°07'12"
C9	134.00'	0.12'	0°02'57"

Course	Bearing	Distance
E1	R=35.00'	L=54.98'
E2	S 01°42'21" W	71.70'
E3	S 39°00'16" W	47.70'
E4	N 25°12'48" W	9.86'
E5	N 01°42'21" E	86.82'
E6	N 01°42'21" E	22.1442'
E7	R=344.00'	L=28.93'
E8	R=344.00'	L=34.38'
E9	R=344.00'	L=34.38'
E10	S 31°22'12" W	27.82'
E11	S 31°22'12" W	27.82'
E12	S 56°28'19" W	10.40'
E13	S 11°33'23" W	4.33'



SEE SHEET 1 FOR SURVEYOR'S NOTES
EASEMENT INFORMATION:

- A 5' UTILITY EASEMENT TO THE CITY OF LYNDEN ADJACENT TO ALL INTERIOR LOT LINES SHALL BE ESTABLISHED HEREON.
- E1 = 10' UTILITY EASEMENT TO THE CITY OF LYNDEN ESTABLISHED HEREON (TYPICAL).
- E2 = 20' STORM DRAIN EASEMENT TO THE CITY OF LYNDEN PER AF No.2023--
- E3 = UTILITY EASEMENT TO THE CITY OF LYNDEN PER AF No.2023--
- E4 = 15' TRAIL EASEMENT TO THE CITY OF LYNDEN PER AF No.2023--
- E5 = 5' SANITARY SEWER EASEMENT IN FAVOR OF LOT 37 ESTABLISHED HEREON.
- E6 = 5' SANITARY SEWER EASEMENT IN FAVOR OF LOT 38 ESTABLISHED HEREON.



SCALE: 1 INCH = 40 FEET

SEE ALSO PUGET SOUND ENERGY EASEMENT AF No.2021-1203441 AND AMENDED PER AF No.2022-0801435.
 (NORTH LINE SW 1/4 = S 88°20'10" E)

PREPARED BY NORTHWEST SURVEYING & GPS, INC., 407 5TH STREET, LYNDEN, WA, 98264