

# KAMM CREEK PRD

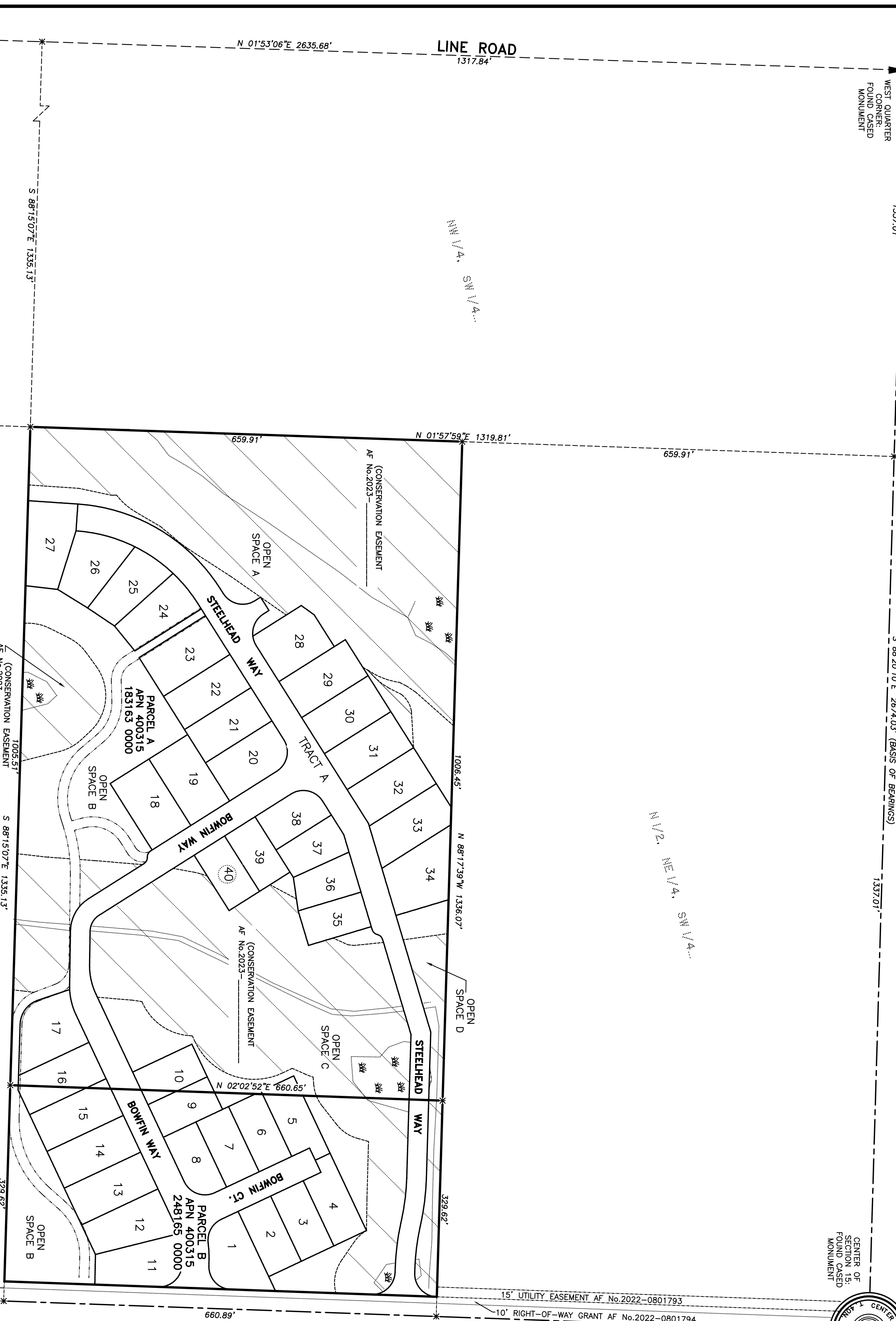
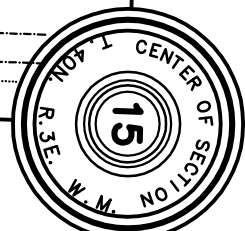
PORTION OF THE NE 1/4 SW 1/4, SECTION 15, TOWNSHIP 40 NORTH, RANGE 3 EAST OF W.M.  
 WITHIN THE CITY OF LYNDEN, WHATCOM COUNTY, WASHINGTON

**KAMM ROAD**

S 88°20'10"E 2674.03' (BASIS OF BEARINGS)

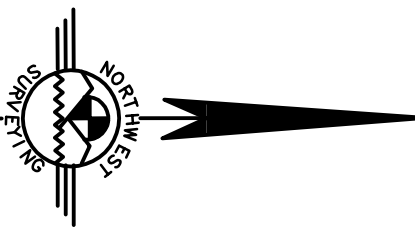
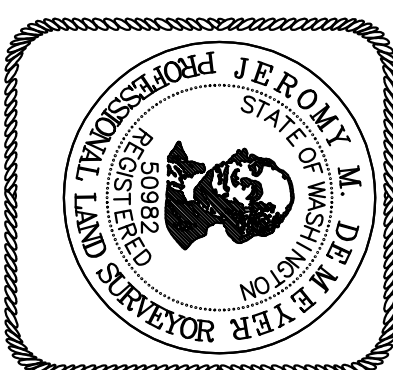
WEST QUARTER  
 CORNER:  
 FOUND CASED  
 MONUMENT

CENTER OF  
 SECTION 15:  
 FOUND CASED  
 MONUMENT

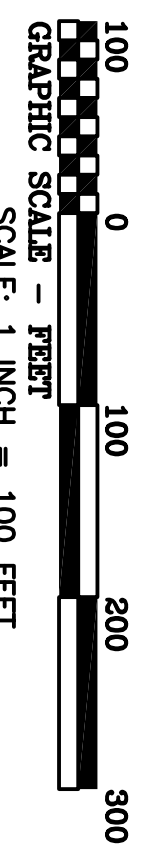


SW 1/4, SW 1/4...

SE 1/4, SW 1/4...



SEE SHEET 1 FOR EASEMENT INFORMATION  
 SEE SHEETS 3-4 FOR EASEMENT NOTES



BASIS OF BEARINGS =  
 CITY OF LYNDEN SURVEY  
 MONUMENT NETWORK  
 (NORTH LINE SW 1/4 = S 88°20'10" E)

PREPARED BY NORTHWEST SURVEYING & GPS, INC., 407 5TH STREET, LYNDEN, WA, 98264

SOUTHWEST  
 SECTION CORNER:  
 AF No. 1980500043

SOUTH QUARTER  
 CORNER:  
 FOUND CASED  
 MONUMENT  
 AF No. 1980500043