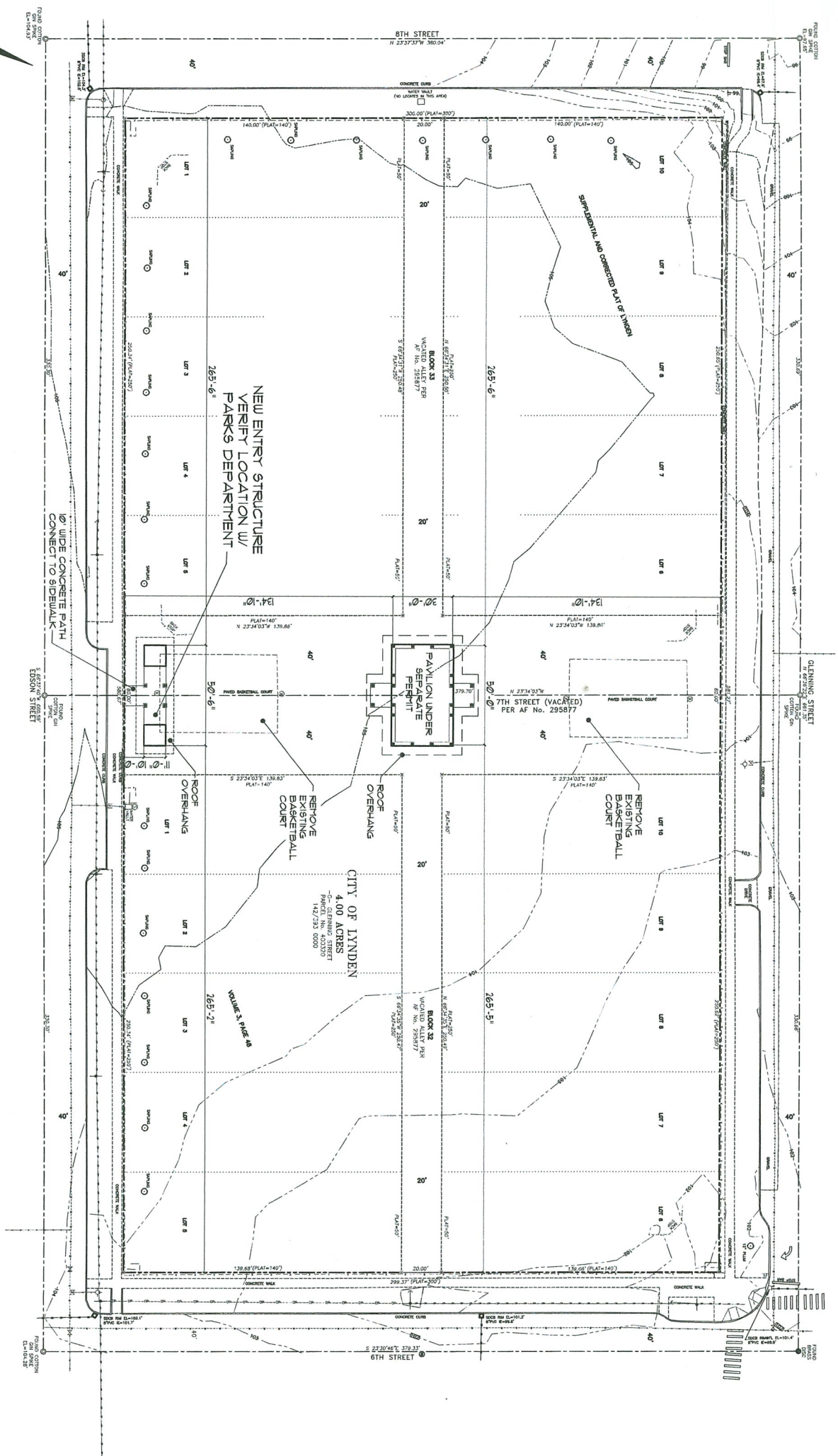




LYNDEN SCHOOLYARD PARK ENTRY
 CORNER OF GLENNING AND 6TH STREET, LYNDEN WA 98264
 SITE PLAN



GRAPHIC SCALE - FEET
 SCALE: 1 INCH = 30 FEET
 BASIS OF BEARINGS =
 CITY OF LYNDEN SURVEY
 MONUMENT NETWORK
 VERTICAL DATUM = NAD 83

- LEGEND:**
- OVERHEAD POWER LINE
 - STORM DRAIN LINE
 - WATER LINE
 - EDGE OF PARKING
 - POUR POLE
 - OUT RACKER
 - PIPE HOBSPIT
 - WATER VALVE
 - WATER SHOOT
 - SEWER MANHOLE
 - SOIL POST

SITE PLAN
 1" = 30'-0"



- NOTES:**
1. STORMWATER / CIVIL DESIGN PROVIDED BY OTHERS
 2. PARKING / LANDSCAPE / LIGHTING DESIGN PROVIDED BY OTHERS

NORTHWEST SURVEYING & GPS, INC.
 407 5TH STREET, LYNDEN, WA 98264
 PH. (360) 354-1950 NWSURVEY.COM

A-2
 OF 5

PERMIT SET 11-21-23

Revisions