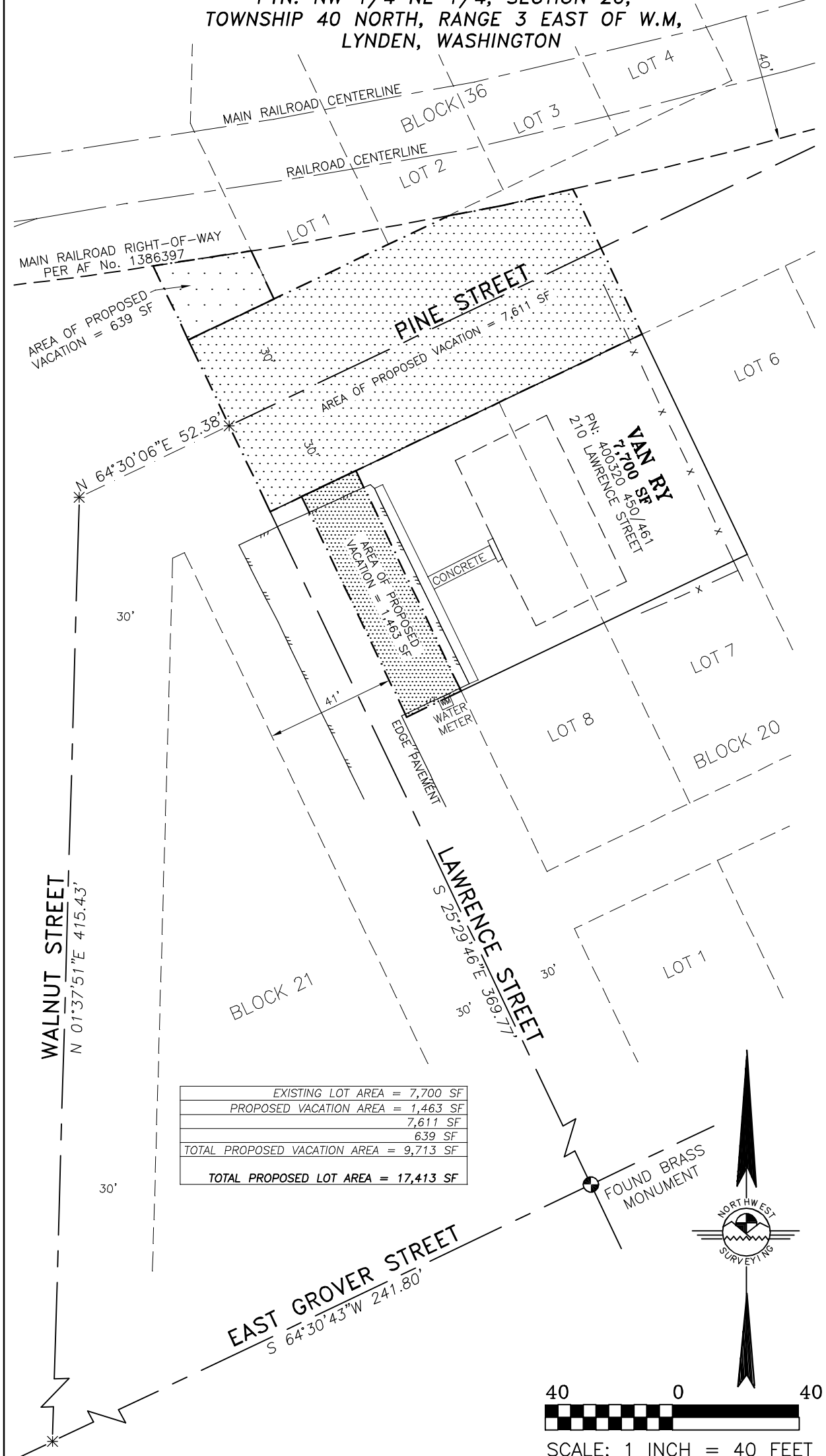
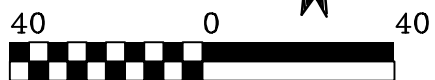
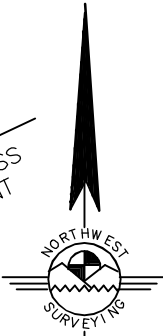


EXHIBIT MAP

PTN: NW 1/4 NE 1/4, SECTION 20,
TOWNSHIP 40 NORTH, RANGE 3 EAST OF W.M.,
LYNDEN, WASHINGTON



EXISTING LOT AREA = 7,700 SF
PROPOSED VACATION AREA = 1,463 SF
7,611 SF
639 SF
TOTAL PROPOSED VACATION AREA = 9,713 SF
TOTAL PROPOSED LOT AREA = 17,413 SF



SCALE: 1 INCH = 40 FEET