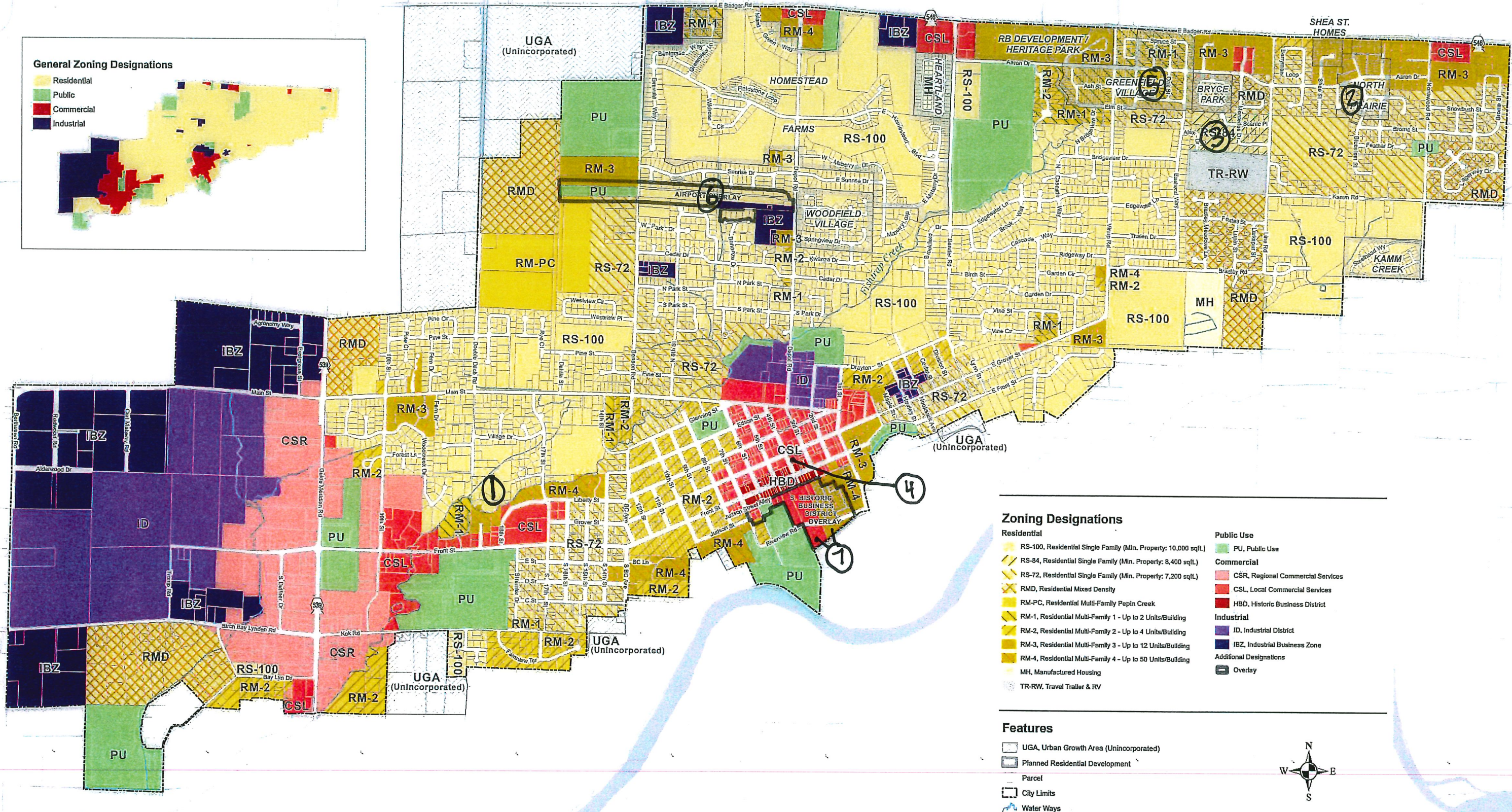
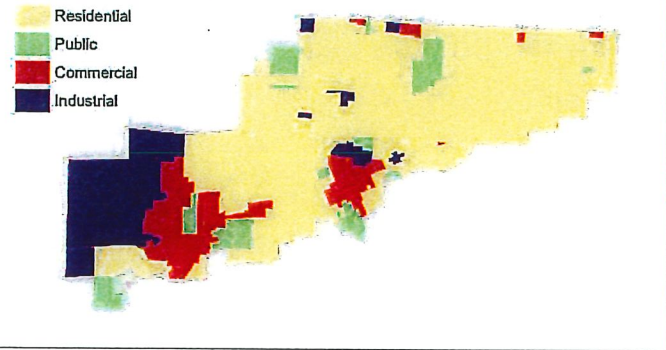


Zoning

City of Lynden

General Zoning Designations



Zoning Designations

- | | |
|--|-----------------------------------|
| Residential | Public Use |
| RS-100, Residential Single Family (Min. Property: 10,000 sq/L) | PU, Public Use |
| RS-94, Residential Single Family (Min. Property: 8,400 sq/L) | Commercial |
| RS-72, Residential Single Family (Min. Property: 7,200 sq/L) | CSR, Regional Commercial Services |
| RMD, Residential Mixed Density | CSL, Local Commercial Services |
| RM-PC, Residential Multi-Family Popin Creek | HBD, Historic Business District |
| RM-1, Residential Multi-Family 1 - Up to 2 Units/Building | Industrial |
| RM-2, Residential Multi-Family 2 - Up to 4 Units/Building | ID, Industrial District |
| RM-3, Residential Multi-Family 3 - Up to 12 Units/Building | IBZ, Industrial Business Zone |
| RM-4, Residential Multi-Family 4 - Up to 50 Units/Building | Additional Designations |
| MH, Manufactured Housing | Overlay |
| TR-RW, Travel Trailer & RV | |

Features

- UGA, Urban Growth Area (Unincorporated)
- Planned Residential Development
- Parcel
- City Limits
- Water Ways



Date: Tuesday, January 14, 2025

The City of Lynden has compiled this information for its own use and is not responsible for any use of this information by others who disclaim any warranty of merchantability or warranty of fitness for any particular purpose, and/or express or implied. The information is provided as a courtesy to the public and is not intended for any other purpose. Any official, professional or other authorized capacity. Persons using this information do so at their own risk and by such use agree to defend, indemnify and hold harmless the City of Lynden as to any claims, damages, liability, losses or suits arising out of such use. Contact the Whatcom County Assessor's Office for the most up-to-date parcel information.