

KODE KAMP VISTA LONG PLAT

A PORTION OF THE SW 1/4, NE 1/4 OF SECTION 15,
TOWNSHIP 40 NORTH, RANGE 3 EAST OF W.M.,
WITHIN THE CITY OF LYNDEN, WHATCOM COUNTY, WASHINGTON

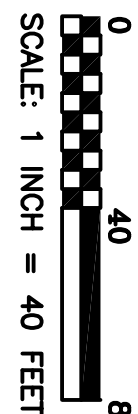
SEE SHEET 1 FOR EASEMENT INFORMATION
SEE SHEET 1 FOR SURVEYOR'S NOTES

Curve	Radius	Length	Delta
C1.1	150.00'	44.13'	16°51'21"
C1.2	150.00'	44.12'	16°51'15"
C1.3	90.00'	141.60'	90°16'50"
C1.4	90.00'	140.94'	89°43'50"
C1.5	90.00'	96.78'	61°36'51"
C1.6	90.00'	44.59'	28°23'09"
C1.7	90.00'	141.37'	90°00'00"
C1.8	90.00'	141.18'	89°52'36"

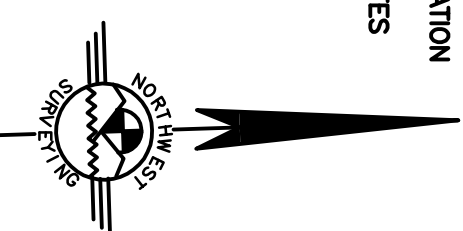
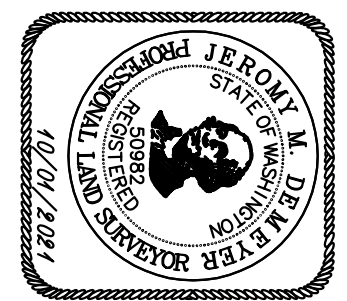
Curve	Radius	Length	Delta
C1	35.00'	54.98'	90°00'00"
C2	120.00'	35.30'	16°51'21"
C3	30.00'	38.30'	73°08'45"
C4	120.00'	16.01'	7°38'34"
C5	120.00'	50.37'	24°02'58"
C6	120.00'	24.16'	11°32'13"
C7	120.00'	50.37'	24°02'58"
C8	120.00'	48.16'	22°59'48"
C9	120.00'	50.37'	24°02'58"
C10	120.00'	80.74'	34°53'29"
C11	120.00'	17.97'	8°34'33"
C12	120.00'	12.68'	6°14'51"
C13	60.00'	64.62'	14°17'54"
C14	60.00'	14.66'	14°17'54"
C15	60.00'	14.66'	14°17'54"
C16	120.00'	21.23'	10°08'11"
C17	120.00'	50.37'	24°02'58"
C18	35.00'	54.88'	89°50'13"

Curve	Radius	Length	Delta
C19	120.00'	23.66'	11°17'41"
C20	120.00'	45.28'	21°37'08"
C21	120.00'	25.18'	12°01'29"
C22	120.00'	50.37'	24°02'58"
C23	120.00'	43.75'	20°53'20"
C24	35.00'	54.98'	89°52'36"
C25	35.00'	54.98'	89°52'36"
C26	60.00'	94.12'	89°52'36"
C27	60.00'	94.25'	90°00'00"
C28	120.00'	29.52'	14°17'52"
C29	120.00'	29.93'	14°17'52"
C30	120.00'	50.37'	24°02'58"
C31	120.00'	50.37'	24°02'58"
C32	120.00'	29.18'	13°55'53"
C33	60.00'	93.96'	89°43'30"
C34	60.00'	94.54'	90°16'30"
C35	120.00'	16.25'	3°23'42"
C36	120.00'	16.25'	3°23'42"
C37	180.00'	58.74'	18°41'51"

Course	Bearing	Distance
C38	35.00'	54.98'
C39	55.00'	42.67'
C40	55.00'	49.66'
C41	55.00'	51.44'3"
C42	42.00'	42.19'56"
C43	75.00'	35.51'
C44	75.00'	24.90'14"
C45	100.00'	26.90'
C46	100.00'	26.35'
C47	100.00'	32.37'54"
C48	100.00'	47.57'
C49	100.00'	35.74'
C50	100.00'	20.29'32"
C51	100.00'	50.98'
C52	100.00'	28.12'36"
C53	11°04'22" W	35.00'
RP1	N 62°41'59" E	35.00'
RP2	N 62°41'59" E	35.00'
RP3	N 73°49'04" W	35.00'

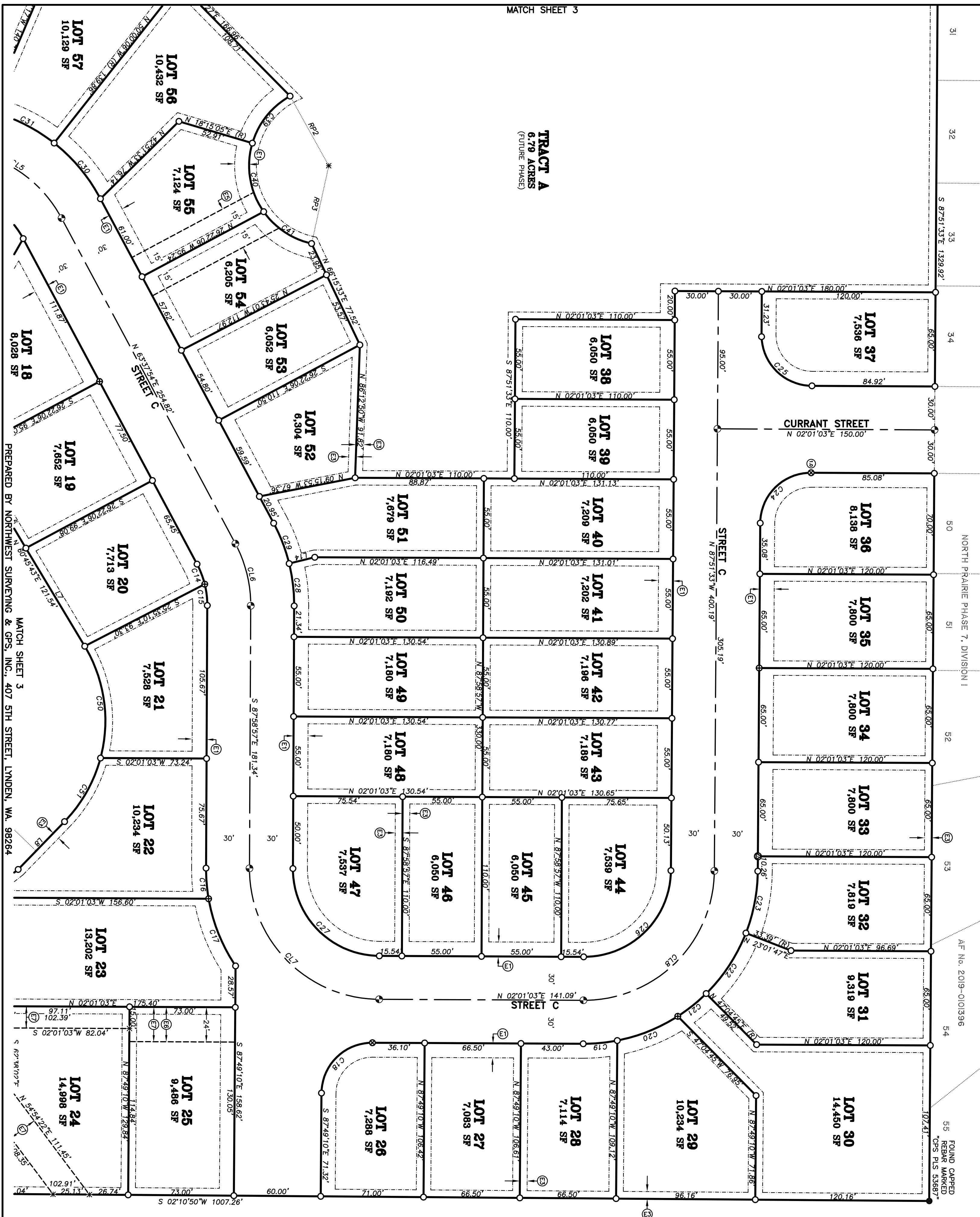


0 40 80
SCALE: 1 INCH = 40 FEET



FOUND CORNER
REBAR MARKED
"GPS PLUS 53887"

AF No. 2019-010396



MATCH SHEET 3

TRACT A
6.79 ACRES
(FUTURE PHASE)

PREPARED BY NORTHWEST SURVEYING & GPS, INC., 407 5TH STREET, LYNDEN, WA, 98264

MATCH SHEET 3