

NORTH PRAIRIE PHASE 7, DIVISION 2

WITHIN THE CITY OF LYNDEN, WHATCOM COUNTY, WASHINGTON.

NORTH QUARTER CORNER SECTION
SECTION 15, CASED MONUMENT
LYN MON. No. 7
S 84°43'00" W
2675.21'

BADGER ROAD SR 546
S 87°11'42" E 2670.24'

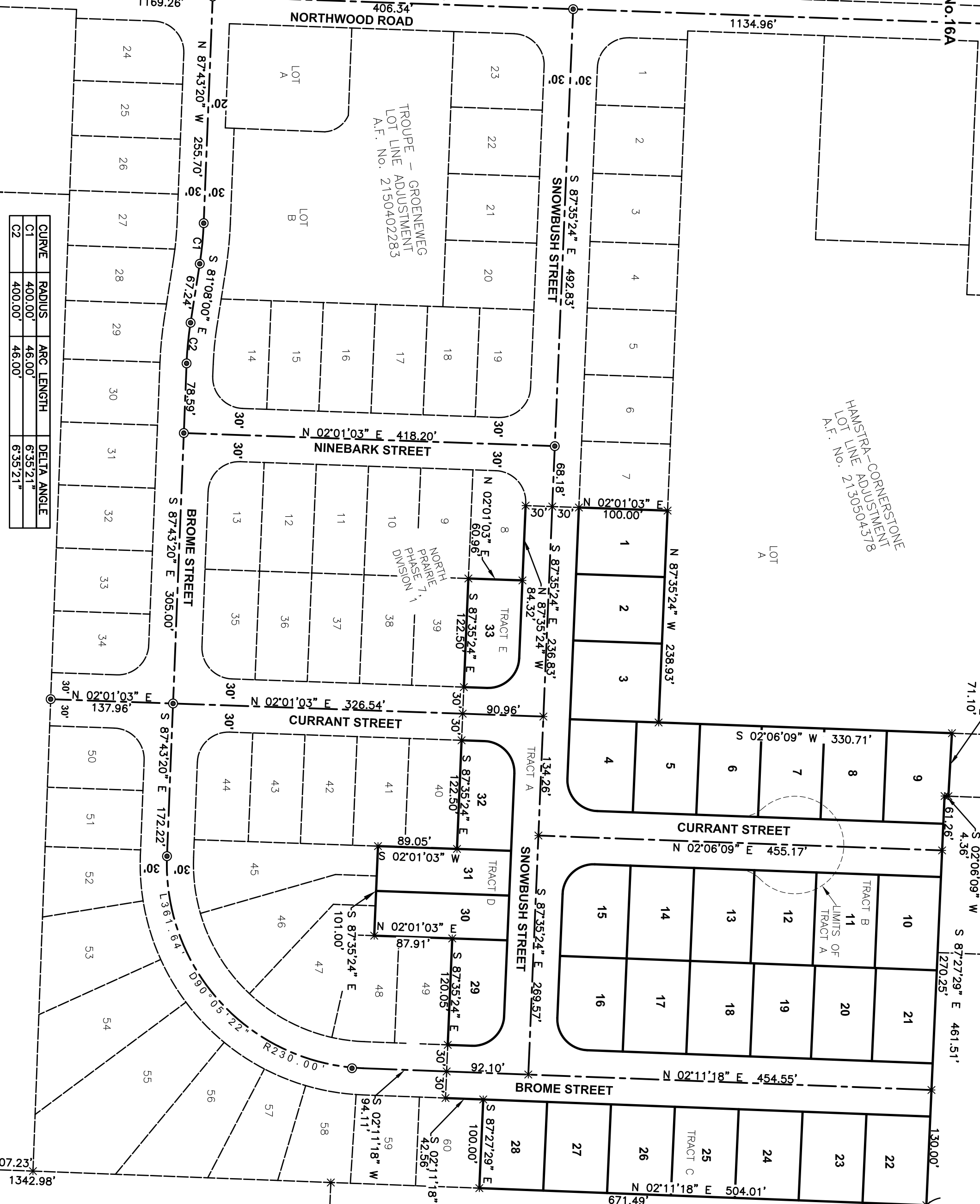
NORTHEAST SECTION CORNER
SECTION 15, CASED MONUMENT

N 02°30'36" E
(BASIS OF BEARINGS)

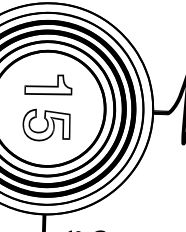
LYN MON. No. 16A

HAMPTON-CORRECTION
HAMPTON ADJUSTMENT
LOT No. 2, 30504378
A.F. No. 2150402285

TROUPE - GROENENEG
LOT LINE ADJUSTMENT
A.F. No. 2150402285



CURVE	RADIUS	ARC LENGTH	DELTA ANGLE
C1	400.00'	46.00'	6°35'21"
C2	400.00'	46.00'	6°35'21"

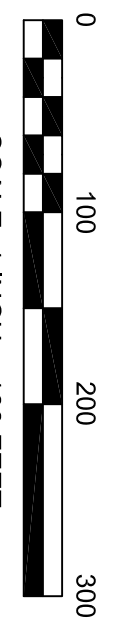
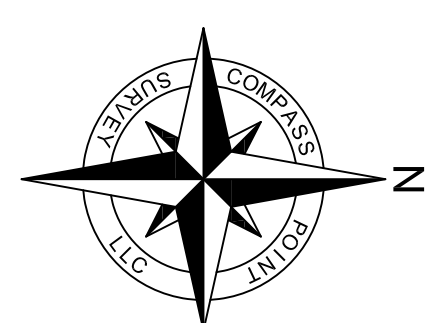


CENTER QUARTER CORNER
SECTION 15, CASED MONUMENT

1327.00'

S 88°15'10" E 2654.00'
KAMM ROAD

EAST QUARTER CORNER
SECTION 15, CASED MONUMENT



SCALE: 1 INCH = 100 FEET

BASIS OF BEARING=
NORTH PRAIRIE PHASE 7, DIVISION 1
A.F. NO. 2019-0101396
(CITY OF LYNDEN SURVEY MONUMENT NETWORK)



SHEET:	DATE:	BY:
2 OF 3	04/24/18	R. \ISA003-2006
DRAWN BY:	DATE:	CDR:
DL B JD	04/20/18	154003-016
	07/25/18	SOUTHCRD
REVIEWED BY:	DRAWING:	
DL B RL	NP PHASE 7 INV 2.DWG	



COMPASS POINT
SURVEY, LLC
523 FRONT STREET, LYNDEN, WA 98264
PH: 360-354-8320 FAX: 360-354-8321