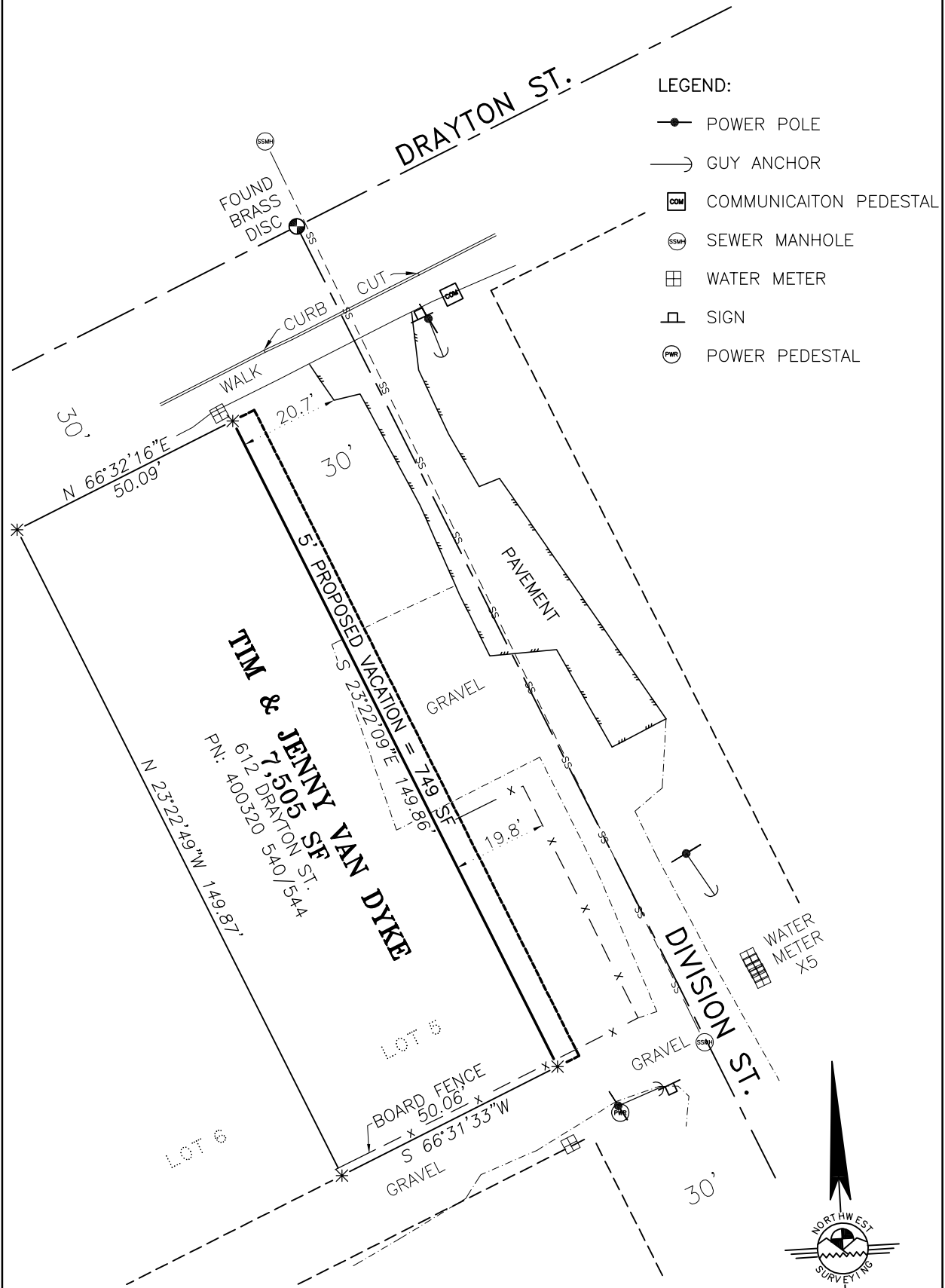


# DIVISION STREET VACATION

PORTION OF THE NE 1/4, NE 1/4 SECTION 20,  
TOWNSHIP 40 NORTH, RANGE 3 EAST OF W.M.  
WITHIN THE CITY OF LYNDEN, WHATCOM COUNTY, WASHINGTON



- LEGEND:
- POWER POLE
  - GUY ANCHOR
  - ◻ COMMUNICATION PEDESTAL
  - ⊙ SEWER MANHOLE
  - ⊞ WATER METER
  - ⊠ SIGN
  - ⊙ POWER PEDESTAL

**TIM & JENNY VAN DYKE**  
612 DRAYTON ST.  
PN: 400320 540/544

