



220 West Champion Street, Suite 200 | 360.650.1408
 Bellingham, WA 98225 | 360.650.1401
FREELAND & ASSOCIATES

BY:	
DESCRIPTION:	
REV:	
DATE:	

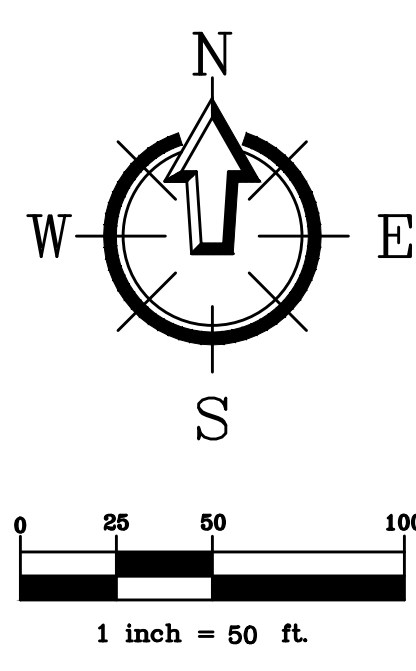
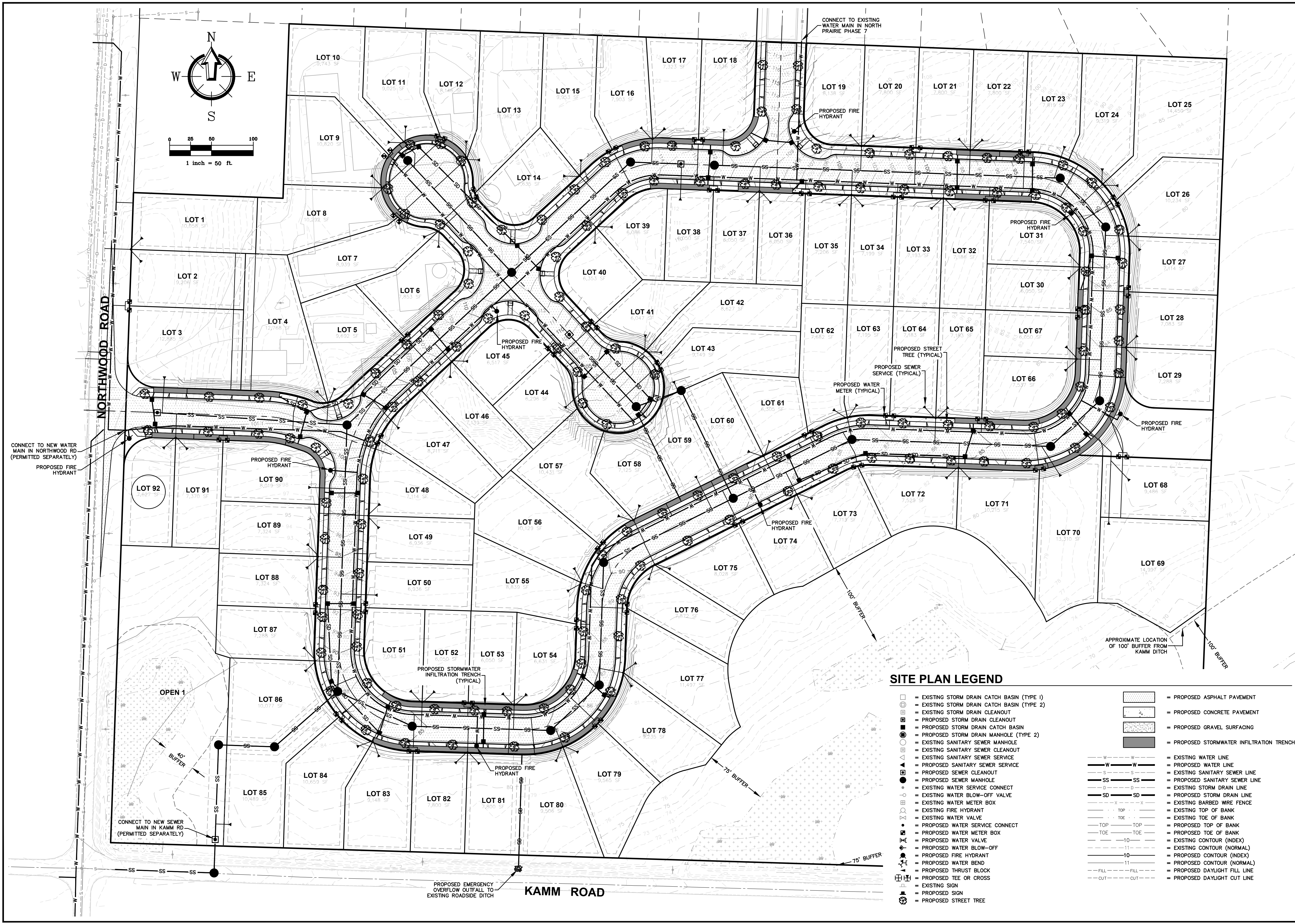
CLIENT:
AXIOM CONSTRUCTION & CONSULTING LLC
 1841 FRONT STREET, SUITE A
 LYNDEN, WA 98264
 CALL BEFORE YOU DIG
 FOR BURIED UTILITY LOCATIONS
 1-800-424-5655

PROJECT LOCATION:
KODE KAMP VISTA PLAT
 8744 NORTHWOOD ROAD
 LYNDEN, WA 98226
 DRAWING #:
 20083SP5.DWG
 DESIGNED BY: MDB
 DRAWN BY: MDB
 CHECKED BY: JPS

SHEET CONTENTS:
PRELIMINARY UTILITY & GRADING PLAN



JOB #: 20083 DATE: 01-16-2021
 SCALE: HORIZ: 1"=50' VERT: N/A
PRE2



SITE PLAN LEGEND

- | | |
|--|---|
| <ul style="list-style-type: none"> □ = EXISTING STORM DRAIN CATCH BASIN (TYPE 1) □ = EXISTING STORM DRAIN CATCH BASIN (TYPE 2) □ = EXISTING STORM DRAIN CLEANOUT □ = PROPOSED STORM DRAIN CLEANOUT □ = PROPOSED STORM DRAIN CATCH BASIN □ = PROPOSED STORM DRAIN MANHOLE (TYPE 2) ○ = EXISTING SANITARY SEWER MANHOLE ○ = EXISTING SANITARY SEWER CLEANOUT ○ = PROPOSED SANITARY SEWER SERVICE ○ = PROPOSED SANITARY SEWER SERVICE ○ = PROPOSED SEWER CLEANOUT ○ = PROPOSED SEWER MANHOLE ○ = EXISTING WATER SERVICE CONNECT ○ = EXISTING WATER BLOW-OFF VALVE ○ = EXISTING WATER METER BOX ○ = EXISTING FIRE HYDRANT ○ = EXISTING WATER VALVE ○ = PROPOSED WATER SERVICE CONNECT ○ = PROPOSED WATER METER BOX ○ = PROPOSED WATER VALVE ○ = PROPOSED WATER BLOW-OFF ○ = PROPOSED FIRE HYDRANT ○ = PROPOSED WATER BEND ○ = PROPOSED THRUST BLOCK ○ = PROPOSED TEE OR CROSS ○ = EXISTING SIGN ○ = PROPOSED SIGN ○ = PROPOSED STREET TREE | <ul style="list-style-type: none"> ▨ = PROPOSED ASPHALT PAVEMENT ▨ = PROPOSED CONCRETE PAVEMENT ▨ = PROPOSED GRAVEL SURFACING ▨ = PROPOSED STORMWATER INFILTRATION TRENCH |
| <ul style="list-style-type: none"> — W — W — = EXISTING WATER LINE — S — S — = PROPOSED WATER LINE — SS — SS — = EXISTING SANITARY SEWER LINE — SS — SS — = PROPOSED SANITARY SEWER LINE — D — D — = EXISTING STORM DRAIN LINE — SD — SD — = PROPOSED STORM DRAIN LINE — X — X — = EXISTING BARBED WIRE FENCE — TOP — TOP — = EXISTING TOP OF BANK — TOE — TOE — = EXISTING TOE OF BANK — TOP — TOP — = PROPOSED TOP OF BANK — TOE — TOE — = PROPOSED TOE OF BANK — 10 — 10 — = EXISTING CONTOUR (INDEX) — 11 — 11 — = EXISTING CONTOUR (NORMAL) — 10 — 10 — = PROPOSED CONTOUR (NORMAL) — 11 — 11 — = PROPOSED CONTOUR (NORMAL) — FILL — FILL — = PROPOSED DAYLIGHT FILL LINE — CUT — CUT — = PROPOSED DAYLIGHT CUT LINE | |

CONNECT TO NEW WATER MAIN IN NORTHWOOD RD (PERMITTED SEPARATELY)
 PROPOSED FIRE HYDRANT

CONNECT TO NEW WATER MAIN IN NORTHWOOD RD (PERMITTED SEPARATELY)
 PROPOSED FIRE HYDRANT

CONNECT TO NEW SEWER MAIN IN KAMM RD (PERMITTED SEPARATELY)

PROPOSED EMERGENCY OVERFLOW OUTFALL TO EXISTING ROADSIDE DITCH
KAMM ROAD

CONNECT TO EXISTING WATER MAIN IN NORTH PRAIRIE PHASE 7

APPROXIMATE LOCATION OF 100' BUFFER FROM KAMM DITCH

100' BUFFER

75' BUFFER

40' BUFFER

NORTHWOOD ROAD