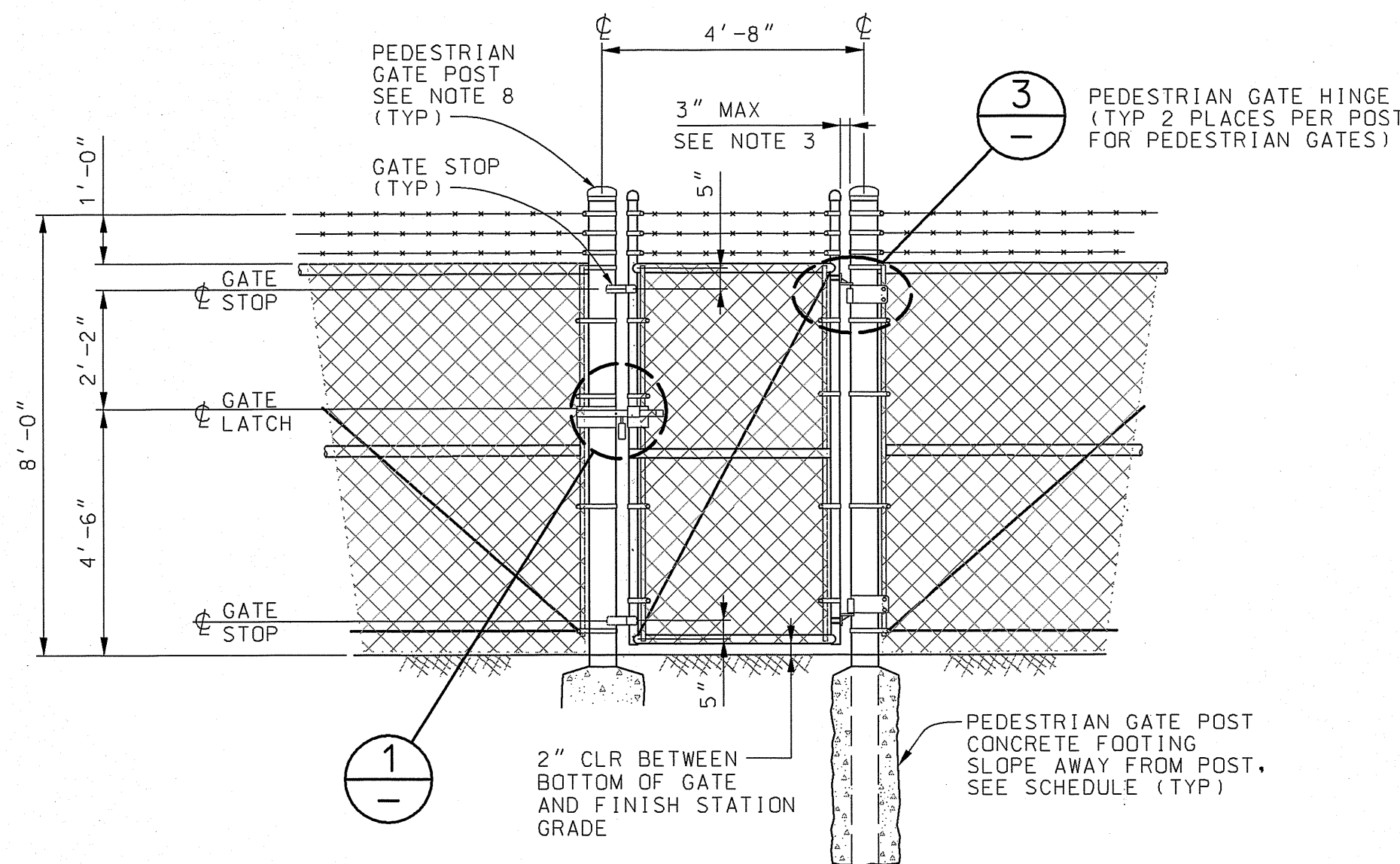
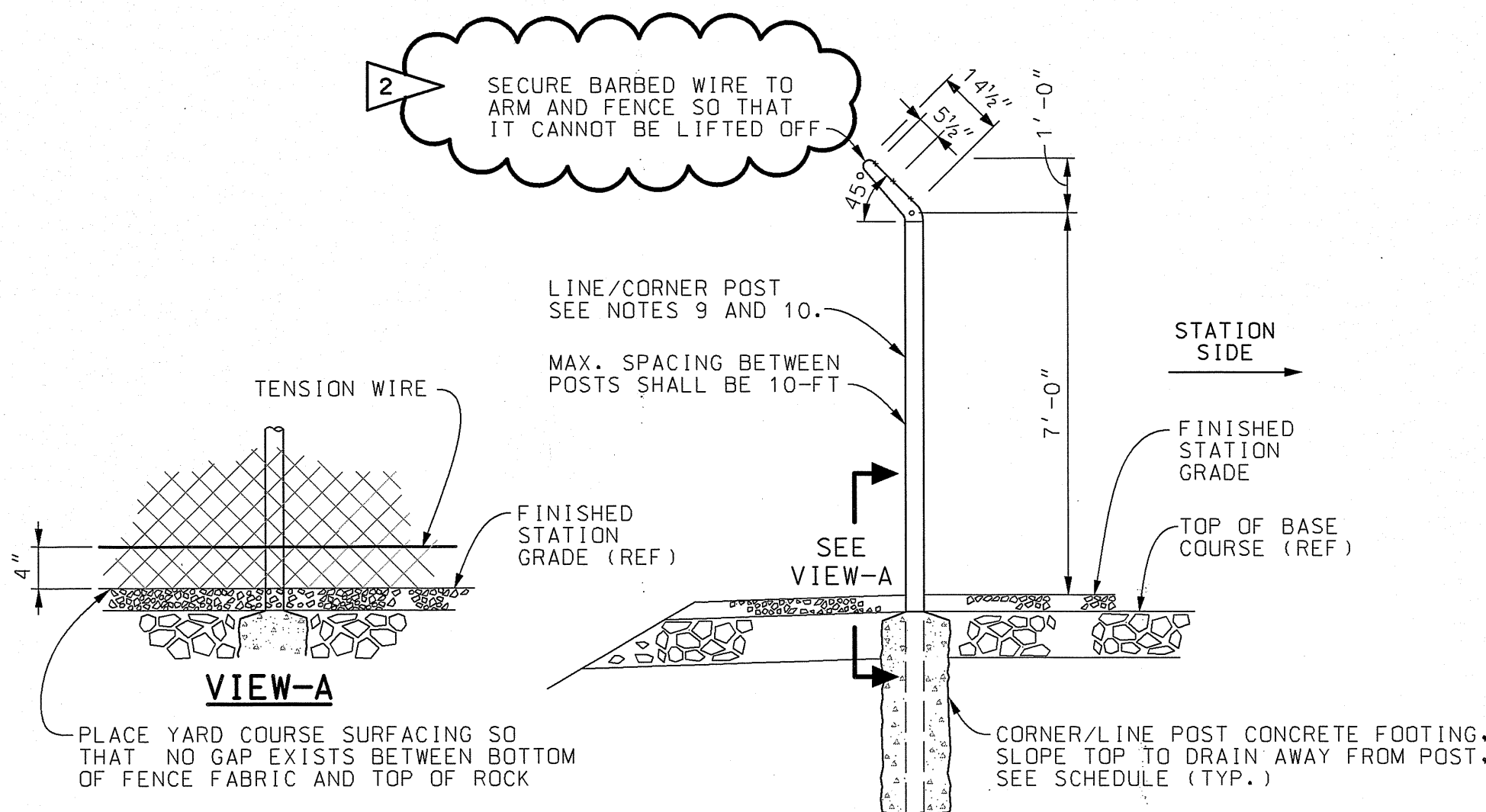


VEHICLE GATE ELEVATION

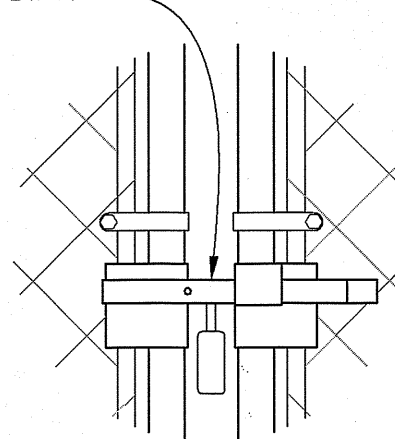


PEDESTRIAN GATE ELEVATION



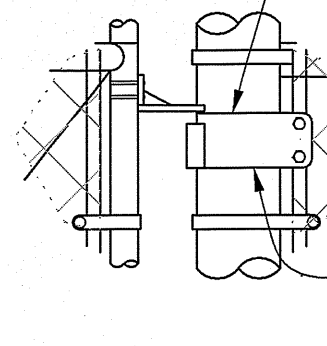
TYPICAL CHAIN LINK FENCE SECTION

HEAVY DUTY INDUSTRIAL GATE LATCH PL 152 BY INTERNATIONAL SECURITY PRODUCTS (NOTE THAT LOCK HANGS DOWN)



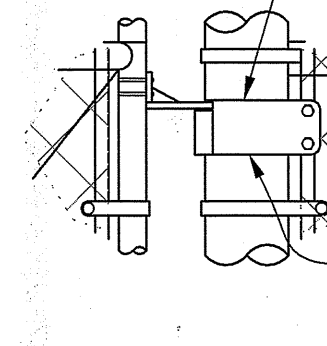
GATE LATCH DETAIL

HEAVY DUTY GATE HINGE BY HOOVER FENCE CO. (MALLEABLE IRON BUTT HINGE, PART NO. BHM-65 W/180° HINGE ADAPTER) OR EQUAL.

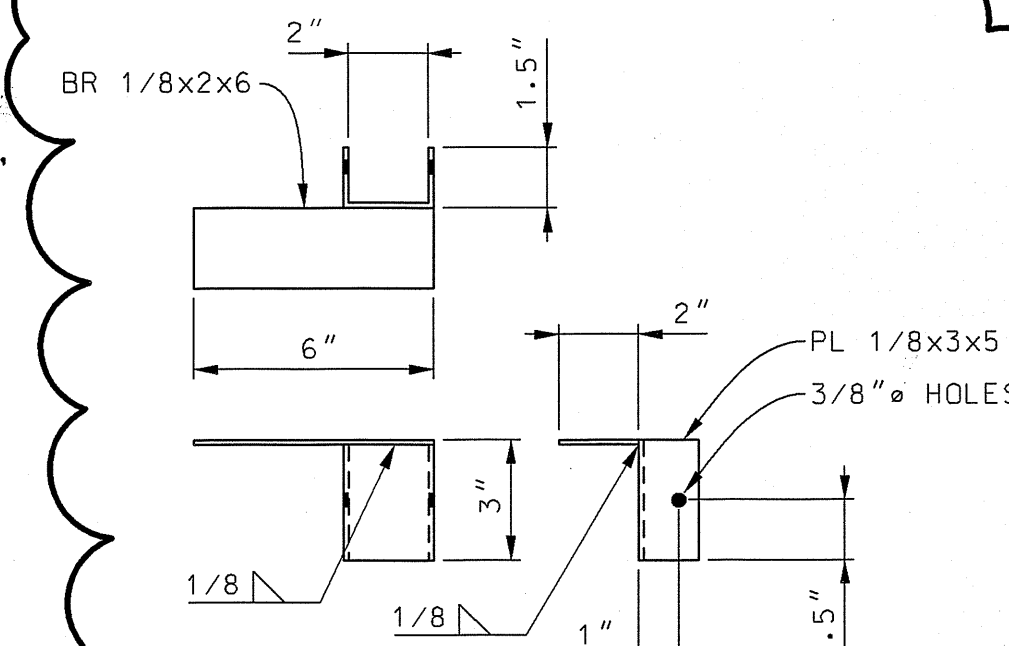


VEHICLE GATE HINGE DETAIL

HEAVY DUTY GATE HINGE BY HOOVER FENCE CO. (MALLEABLE IRON BUTT HINGE, PART NO. BHM-65 W/180° HINGE ADAPTER) OR EQUAL.



PEDESTRIAN GATE HINGE DETAIL



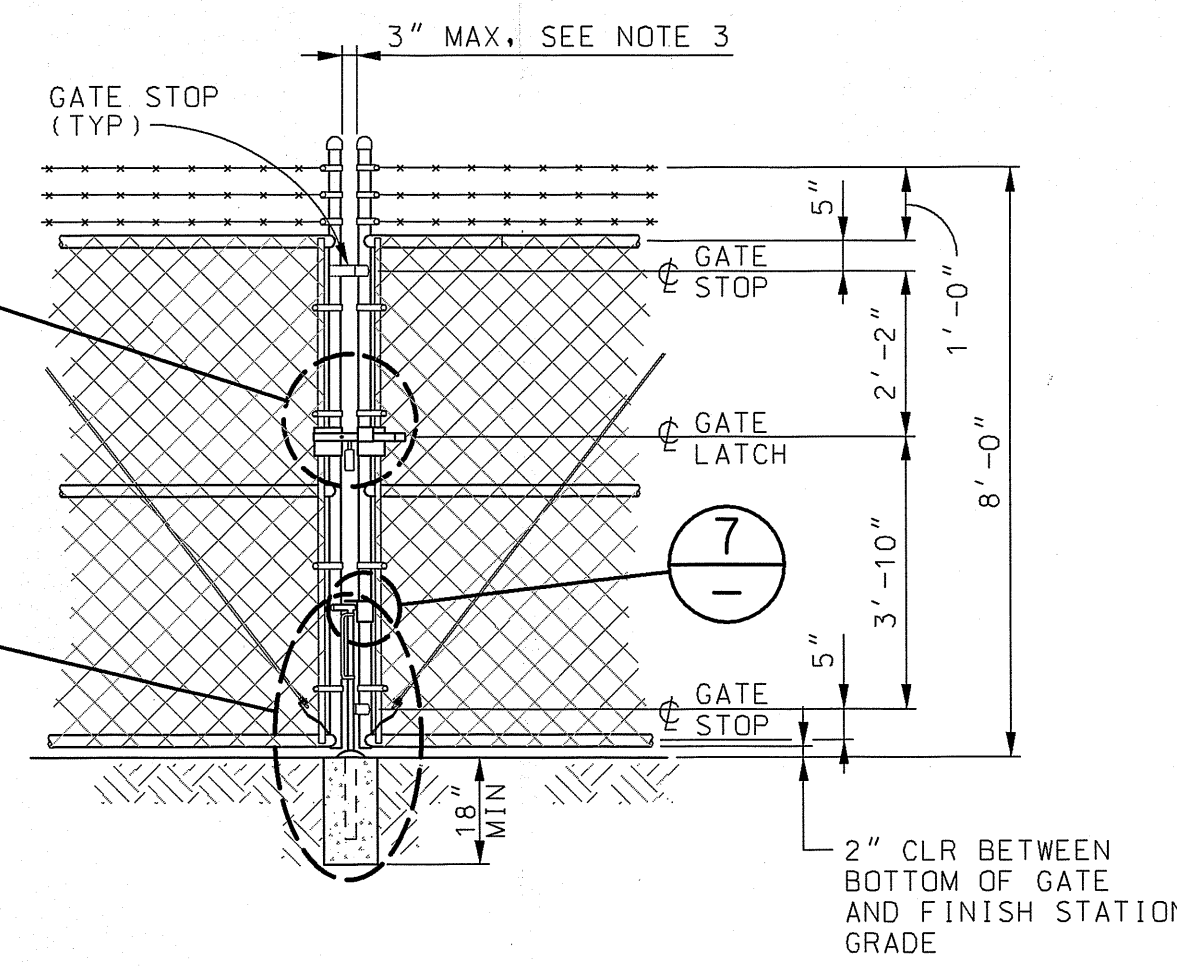
CENTER PIN LOCKING PLATE

CENTER LOCKING BAR. (LOCKED POSITION) HANDLE SHALL BE 1'-6" TO 2'-0" ABOVE GRADE AND SHALL BE FITTED WITH STOPS WHICH WILL HOLD IT IN EITHER THE LOCKED POSITION OR LIFTED POSITION.

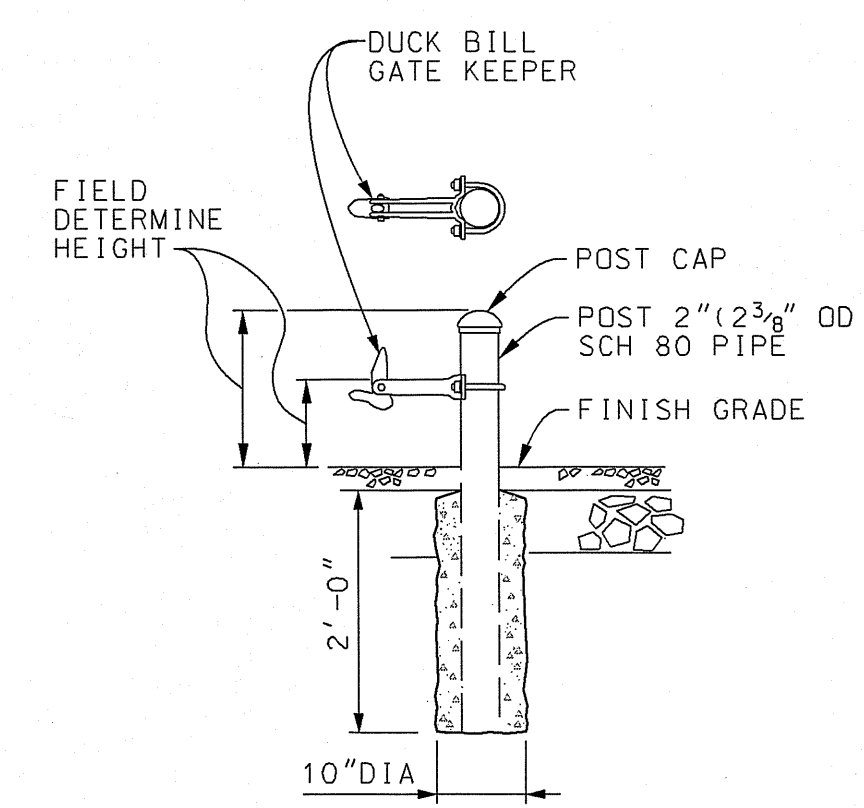
VENT HOLE (SEE NOTE 15) TYP AT ALL WELDED JOINTS FOR GALVANIZING PURPOSES

CENTER GATE STOP, MUSHROOM TYPE MALLEABLE IRON, WELD 1/2" LONG STEEL PIPE TO BOTTOM AND SET IN CONCRETE FORMED WITH 10" SONO TUBE. TOP OF CONCRETE SHALL BE AT FINISHED GRADE ELEVATION. FOR PAVED DRIVEWAYS, INSTALL BEFORE ASPHALT IS PLACED.

GATE STOP DETAIL



VEHICLE GATE DETAIL



GATE KEEPER DETAIL

THE WORK SHOWN ON THIS DRAWING SHALL BE IN ACCORDANCE WITH THE FOLLOWING

### PSE STANDARDS

1275.1130	CONCRETE, STRUCTURAL
8350.2200	CONCRETE INSTALLATION
1025.8340	STEEL, STRUCTURAL

### GENERAL NOTES:

SPECIFICATIONS:	AISC (LATEST)
MATERIAL:	STRUCTURAL STEEL, ASTM A36 (LATEST) STEEL STRUCTURAL TUBING, ASTM A501, Fy 36 ksi (LATEST)
WELDS:	PER AWS D-1.1 (LATEST)
FINISH:	GRIND SMOOTH ALL BURRS AND SHARP EDGES
SURFACE COATING:	HOT DIP GALVANIZED PER ASTM A123 AND ASTM A53 (LATEST). ALL UNGALVANIZED WELDS SHALL BE CLEANED, WIRE BRUSHED AND A HOT ZINC STICK COATING APPLIED FOLLOWED BY A FINAL ZINC RICH PRIMER COATING.

### REFERENCE DRAWINGS & SPECIFICATIONS


D-13038	ENTRANCE/ROW GATE SINGLE AND DOUBLE STANDARD DETAIL
SECT 02831	CHAIN LINK FENCING & GATES, CIVIL SPECIFICATIONS

CONCRETE FOOTING SCHEDULE		
	FOOTING DEPTH (SEE NOTE 13)	FOOTING DIAMETER
VEHICLE GATE POST	3'-8" MIN	18" MIN
VEHICLE GATE POST W/SLATS	4'-0" MIN	24" MIN
CORNER/LINE POST	3'-6" MIN	12" MIN
CORNER/LINE POST W/SLATS	3'-8" MIN	18" MIN
PEDESTRIAN GATE POST	3'-8" MIN	18" MIN

NOTE: CONCRETE FOOTING F'c = 2,500 PSI.

### GATE AND FENCE NOTES

- GATE CORNER POSTS ARE TO HAVE 90° HINGES (NO 180° ADAPTER REQUIRED).
- GATE NON-CORNER POSTS ARE TO HAVE 180° HINGES (180° ADAPTER REQUIRED).
- GATES SHALL BE FABRICATED TO MATCH THE ACTUAL DISTANCE BETWEEN GATE POSTS WITH A MAXIMUM 3" GAP BETWEEN POST AND GATE FRAME.
- GATES SHALL BE HOT DIP GALVANIZED AFTER FABRICATION AND WELDING. ANY FIELD WELDING SHALL BE WIRE BRUSHED CLEAN AND HOT ZINC STICK COATED TO REPAIR GALVANIZING.
- FENCE FABRIC WITHOUT SLATS SHALL BE 9 GAUGE WIRE WOVEN INTO A 2" MESH SIZE.
- FENCE FABRIC WITH SLATS SHALL BE 9 GAUGE WIRE WOVEN INTO A 3 1/2" X 5 1/2" MESH SIZE.
- VEHICLE GATE POST SHALL BE 6-INCH STANDARD (6.625-INCH O.D.), WEIGHT 18.97 LB/LF OR LARGER, STEEL PIPE FOR ALL 7-FT HIGH GATES.
- PEDESTRIAN GATE POST SHALL BE 3.5-INCH STANDARD (4.0-INCH O.D.), WEIGHT 9.11 LB/FT OR LARGER STEEL PIPE FOR ALL 7-FT HIGH GATES.
- LINE POSTS WITH SLATS SHALL BE 3.5-INCH STANDARD (4.0-INCH O.D.), WEIGHT 9.11 LB/LF OR LARGER STEEL PIPE FOR ALL 7-FT HIGH GATES.
- LINE POSTS WITHOUT SLATS SHALL BE 2.5-INCH STANDARD (2.875-INCH O.D.), WEIGHT 5.79 LB/LF OR LARGER STEEL PIPE FOR ALL 7-FT HIGH GATES.
- VEHICLE AND PEDESTRIAN GATE FRAMES SHALL BE 1.5-INCH STANDARD (1.90-INCH O.D.), WEIGHT 2.72 LB/LF OR LARGER STEEL PIPE.
- FENCE MIDDLE AND TOP RAIL AND BRACES SHALL BE 1.25-INCH STANDARD (1.66-INCH O.D.), WEIGHT 2.27 LB/LF OR LARGER STEEL PIPE.
- FOOTING DEPTH IS MEASURED FROM TOP OF BASE COURSE.
- BOLTS HOLDING LATCHES AND OTHER LOCKING HARDWARE SHALL BE PEENED TO PREVENT REMOVAL OF NUTS. NUTS SHALL BE LOCATED ON THE INSIDE OF THE SECURED AREA.
- ALL PIPE JOINTS SHALL HAVE A 1/2" VENT HOLE AT BOTTOM AND TOP OF RAIL AS CLOSE TO THE WELD AS POSSIBLE.
- ALL VEHICLE GATES SHALL RECEIVE A GATE KEEPER AS SHOWN ON FENCE PLAN, PER DETAIL 6, THIS SHEET.

REVISION DESCRIPTION:		WO NUMBER:		CHAIN LINK FENCING SECTIONS AND DETAILS			
ADDED LOCKING PLATE FOR CENTER LOCKING BAR							
CAD	E. DAHL	DATE (M/D/Y)	06/18/19	 PUGET SOUND ENERGY	SUBSTATION ENGINEERING DEPARTMENT	DRAWING NO	REV NO
ENGINEER		/ /				D-18381	2
REVIEWED		/ /		SCALE: NONE	CLASS: SITE	SHEET: 1 OF 1	FILE NO:
APPROVED	J. HENRY	6/18/19		CADD NO: D-18381_01.dgn			CODE: