

Grover Street Pavement Preservation

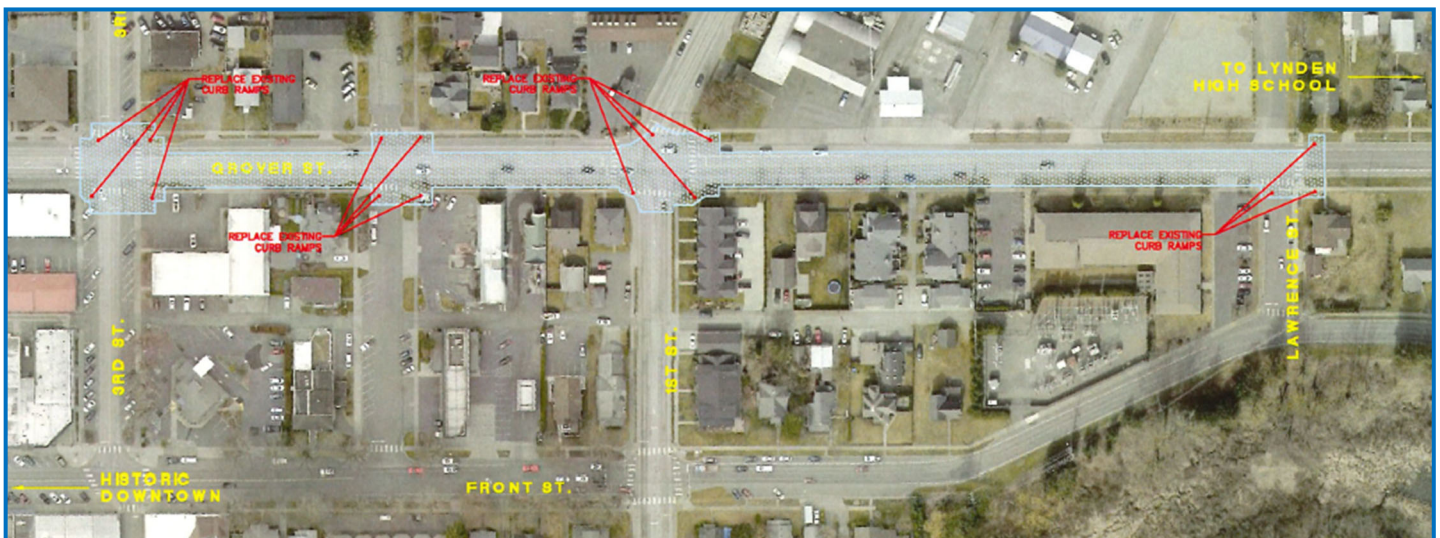
EDI Funding Request: \$500,000



Request: The City of Lynden is requesting Whatcom County Economic Development Investment (EDI) funds in the amount of \$500,000 to complete a structural overlay of approximately ¼ mile of Grover Street, between 3rd Street and Lawrence Street, including grinding the surface two inches for repaving and replacing existing curb ramps. The cross-streets at intersections will be ground back approximately 100 feet for a clean transition. New traffic loops will be installed at the two signalized intersections. The requested funds would be matched with City General Funds or a Transportation Improvement Board grant (pending).

Issue: Grover Street is a designated truck route and the principal east-west thoroughfare for commerce in the City of Lynden. This section of Grover Street provides primary access from Hannegan Road to the entire east side of Lynden where most of the recent development has occurred. It also provides connectivity north to State Route 546 (East Badger Road) and the Canadian border. The roadway needs resurfacing due to the high volume of freight and vehicle traffic. This section handles large volume of milk truck deliveries and freight deliveries to essential food processing and frozen storage facilities. This area also includes other smaller businesses that rely on this stretch of roadway for deliveries. Additionally, it is a principal school bus route and a scheduled WTA bus route. Existing curb ramps are in disrepair and need to be upgraded to meet current ADA standards for the many pedestrians that use this route.

Solution: A structural overlay in this area will improve one of the most important stretches of the Lynden street network. The project will extend the pavement life, improve traffic flow, and upgrade the pedestrian facilities to current ADA standards. Additionally, the traffic loops will be replaced and upgraded to increase the efficiency of the signals which control the large volume of vehicles travelling through the two signalized intersections in this section.



This aerial shows the proposed project area, including the intersections (in red) to be upgraded to current ADA standards.