

City of Lynden

Fishtrap Creek watershed water quality updates

As of June 27, 2023

Please refer to the following resources:

1. **City of Lynden Water Quality Report_July_2023:** Curated by Whatcom Conservation District as an output of the Stormwater programs outreach and education. The document is a series of maps that are to graphically show the most recent water quality results.
 - a. **Page 1:** Showing all the sample site locations within the City of Lynden that are routinely sampled for Fecal Coliform but Whatcom County Public Works and community partners.
 - b. **Page 2:** Fecal Coliform sampling results from May 30th 2023
 - c. **Page 3:** Fecal Coliform sampling results from June 12th 2023
 2. **05-30-23_Fishtrap Focus_Summary:** Curated by Whatcom County public works, this document shares historical water quality results for the whole Fishtrap watershed, including the city of Lynden. It is summarizing up to the end of May 2023.
 3. **Online water quality map:** This is an online resource with the most up-to-date sampling results. This can be referenced at any time for accurate results: <https://arcg.is/1XPHm80>
- **Sampling results from May 30, 2023**
 - Three-day prior rainfall recorded in North Lynden was 0 inch.
 - We saw moderate bacteria levels in the Depot Rd ditch between E. Badger Rd (FT2; 270*) and Fishtrap Creek (F5a; 210).
 - Two outfalls at the south end of Depot Rd (site F5a-NEof; 270) and Bender Rd (site F6of; 320) were both moderately elevated. The outfall where we've typically seen high bacteria levels was low (F4b-NWOF; 44)
 - Fishtrap mainstem sites were highly elevated south of Main Street and remained elevated all the way downstream to the mouth of Fishtrap Creek.
 - Double Ditch levels were low, except for Double Ditch East at Pine St, which was highly elevated (DDE; 1,600). This site had a lot of green algae and algal mats and the sample was collected 30' upstream from normal sampling location. Vegetative matter could have been contributing to the high fecal coliform values at this site.
 - **Sampling results from June 12, 2023**
 - Three-day prior rainfall recorded in North Lynden was recorded as 1.4 inches, which seems very high (possible measurement error). The South Lynden station recorded 0.69 inch.
 - We saw moderate increases in bacteria levels in both ditches along Depot Rd and Bender Rd between E. Badger Rd and Fishtrap Creek.
 - City of Lynden stormwater staff took additional bracket samples along these two ditches on the same day as County ambient sampling (6/12/23). Depot Rd ditch bracket sites

*note all bacteria results are in units of colony counts per 100 mL sample water.

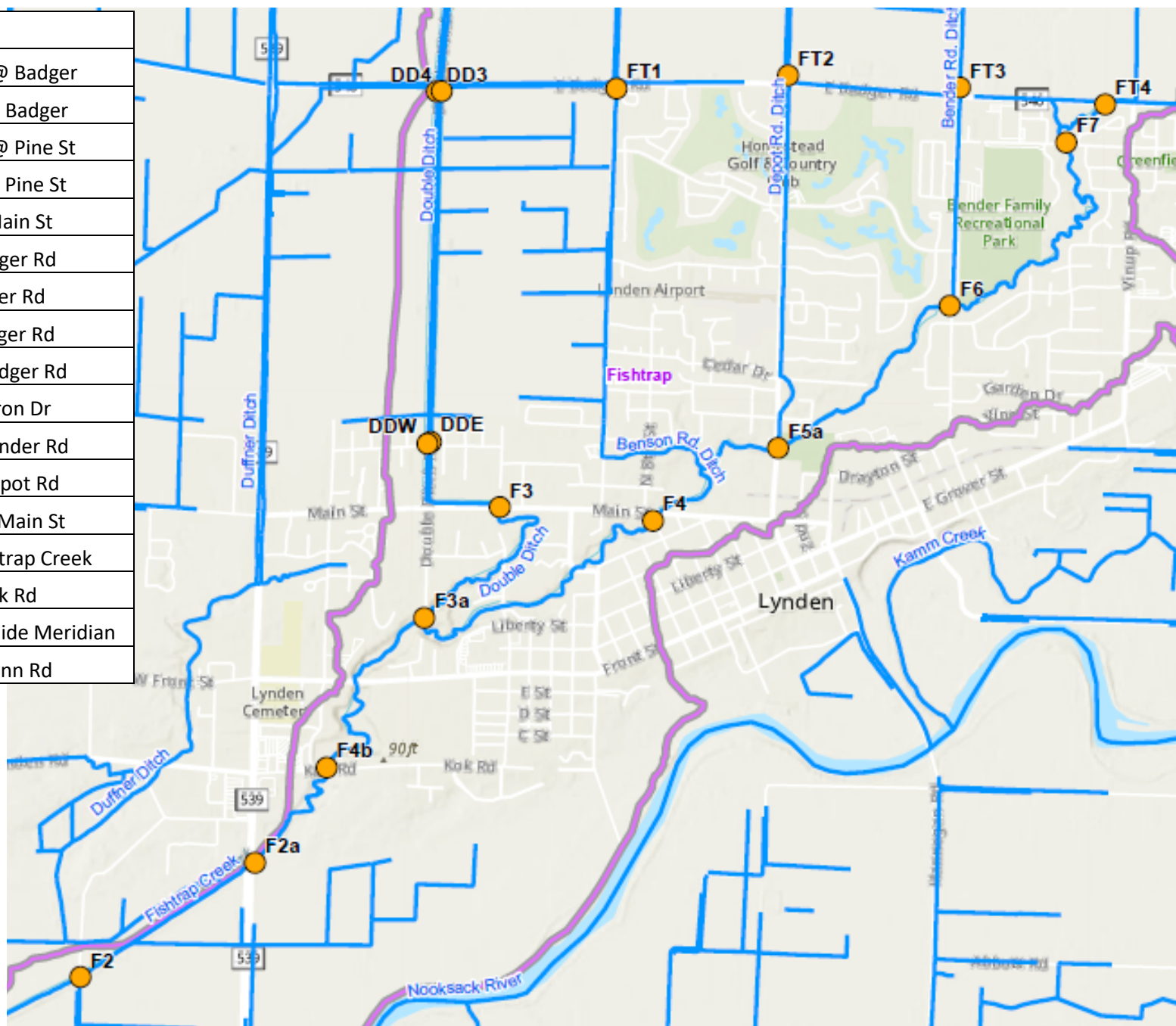
were only slightly elevated (118-182) and Bender Rd ditch bracket samples were low (52-62). These results didn't point to a clear source along these ditches.

- Lower Fishtrap and lower Pepin Creek were both moderately elevated all the way downstream to the mouth of Fishtrap Creek (F1; 300).
- The Lynden Plaza outfall at Kok Rd was highly elevated (F4b-NWOF; 1,900). City of Lynden stormwater staff were going to resample this outfall in coordination with County sampling on 6/26/23, but this was not carried out due to dry conditions in the week leading up to this date and likelihood of this outfall being dry.

*note all bacteria results are in units of colony counts per 100 mL sample water.

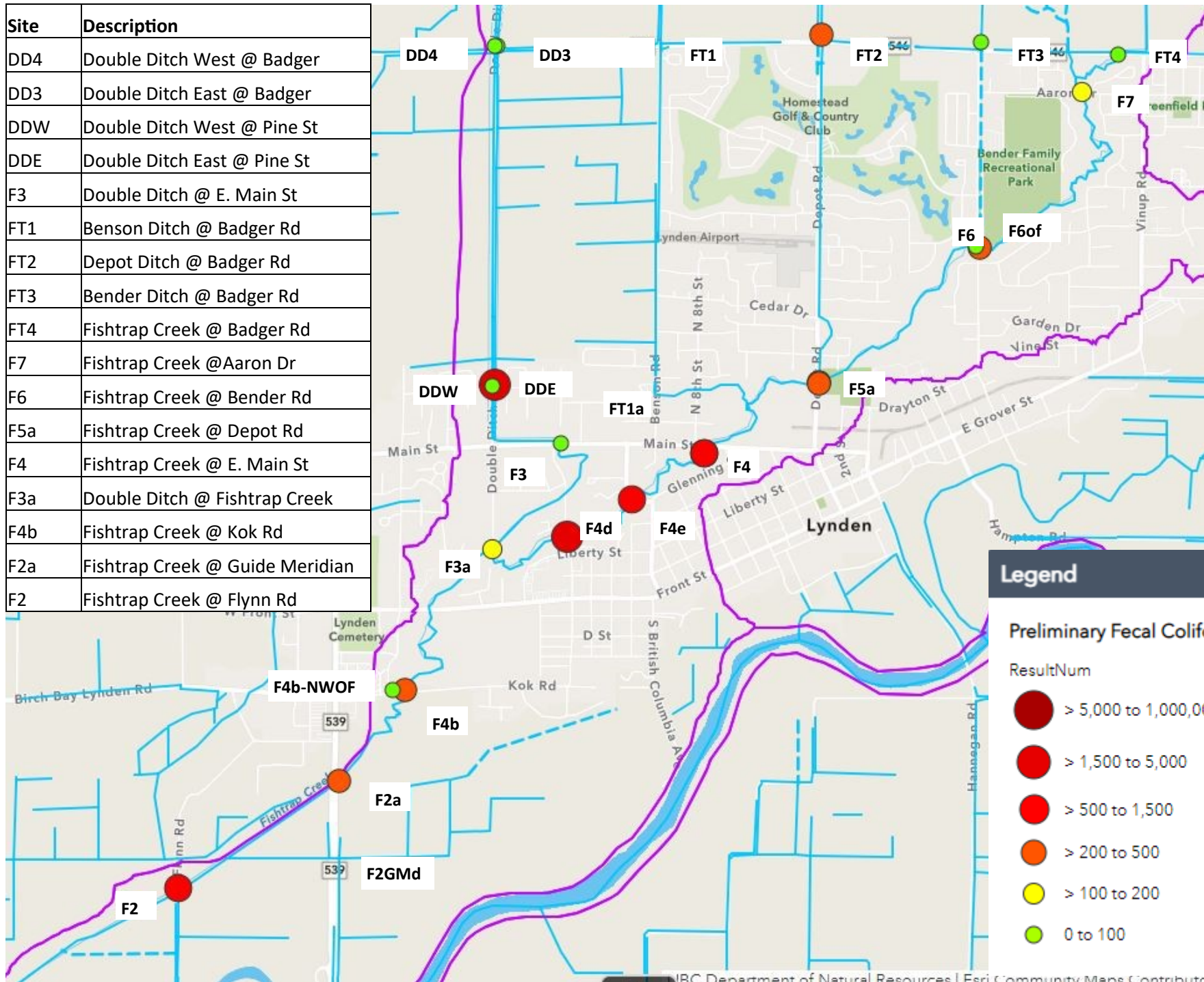
Routine Water Quality Monitoring Locations

Site	Description
DD4	Double Ditch West @ Badger
DD3	Double Ditch East @ Badger
DDW	Double Ditch West @ Pine St
DDE	Double Ditch East @ Pine St
F3	Double Ditch @ E. Main St
FT1	Benson Ditch @ Badger Rd
FT2	Depot Ditch @ Badger Rd
FT3	Bender Ditch @ Badger Rd
FT4	Fishtrap Creek @ Badger Rd
F7	Fishtrap Creek @ Aaron Dr
F6	Fishtrap Creek @ Bender Rd
F5a	Fishtrap Creek @ Depot Rd
F4	Fishtrap Creek @ E. Main St
F3a	Double Ditch @ Fishtrap Creek
F4b	Fishtrap Creek @ Kok Rd
F2a	Fishtrap Creek @ Guide Meridian
F2	Fishtrap Creek @ Flynn Rd



Water Quality Results: From 5/30/23

Site	Description
DD4	Double Ditch West @ Badger
DD3	Double Ditch East @ Badger
DDW	Double Ditch West @ Pine St
DDE	Double Ditch East @ Pine St
F3	Double Ditch @ E. Main St
FT1	Benson Ditch @ Badger Rd
FT2	Depot Ditch @ Badger Rd
FT3	Bender Ditch @ Badger Rd
FT4	Fishtrap Creek @ Badger Rd
F7	Fishtrap Creek @ Aaron Dr
F6	Fishtrap Creek @ Bender Rd
F5a	Fishtrap Creek @ Depot Rd
F4	Fishtrap Creek @ E. Main St
F3a	Double Ditch @ Fishtrap Creek
F4b	Fishtrap Creek @ Kok Rd
F2a	Fishtrap Creek @ Guide Meridian
F2	Fishtrap Creek @ Flynn Rd



Legend

Preliminary Fecal Coliform Results

- ResultNum
- > 5,000 to 1,000,000
 - > 1,500 to 5,000
 - > 500 to 1,500
 - > 200 to 500
 - > 100 to 200
 - 0 to 100

Water Quality Results: From 6/12/23

Site	Description
DD4	Double Ditch West @ Badger
DD3	Double Ditch East @ Badger
DDW	Double Ditch West @ Pine St
DDE	Double Ditch East @ Pine St
F3	Double Ditch @ E. Main St
FT1	Benson Ditch @ Badger Rd
FT2	Depot Ditch @ Badger Rd
FT3	Bender Ditch @ Badger Rd
FT4	Fishtrap Creek @ Badger Rd
F7	Fishtrap Creek @ Aaron Dr
F6	Fishtrap Creek @ Bender Rd
F5a	Fishtrap Creek @ Depot Rd
F4	Fishtrap Creek @ E. Main St
F3a	Double Ditch @ Fishtrap Creek
F4b	Fishtrap Creek @ Kok Rd
F2a	Fishtrap Creek @ Guide Meridian
F2	Fishtrap Creek @ Flynn Rd

