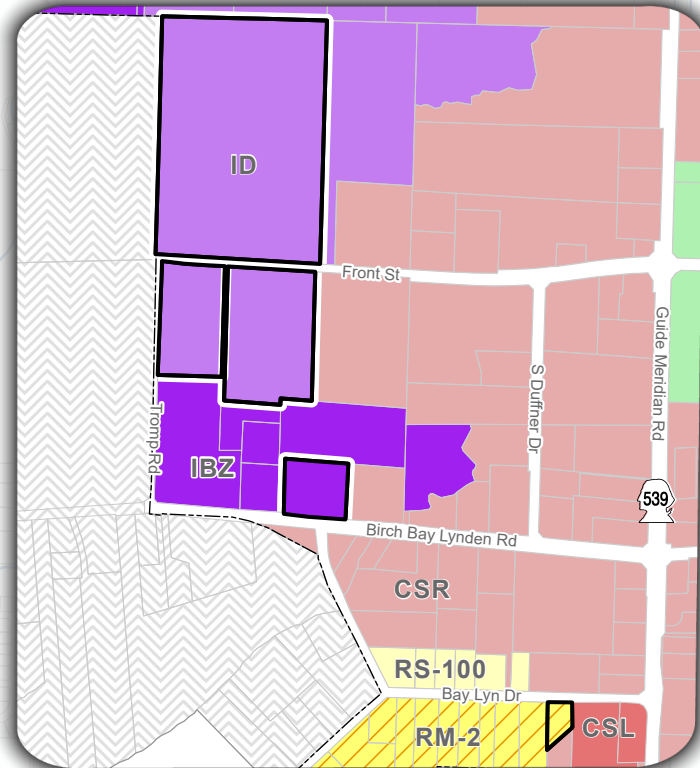
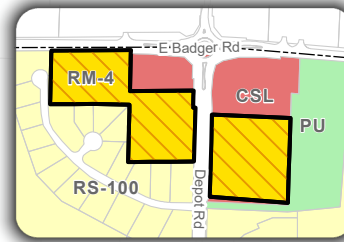


Proposed Zoning Changes, 2022

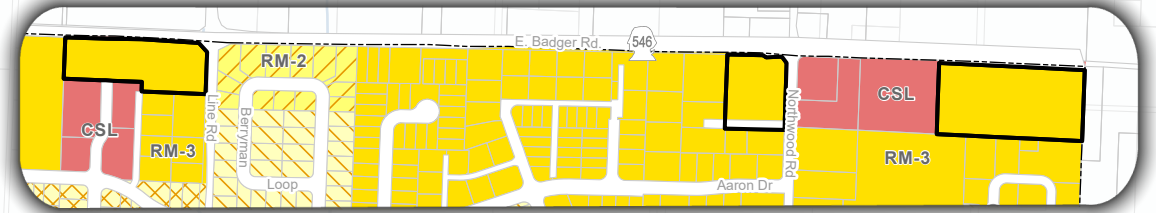
City of Lynden



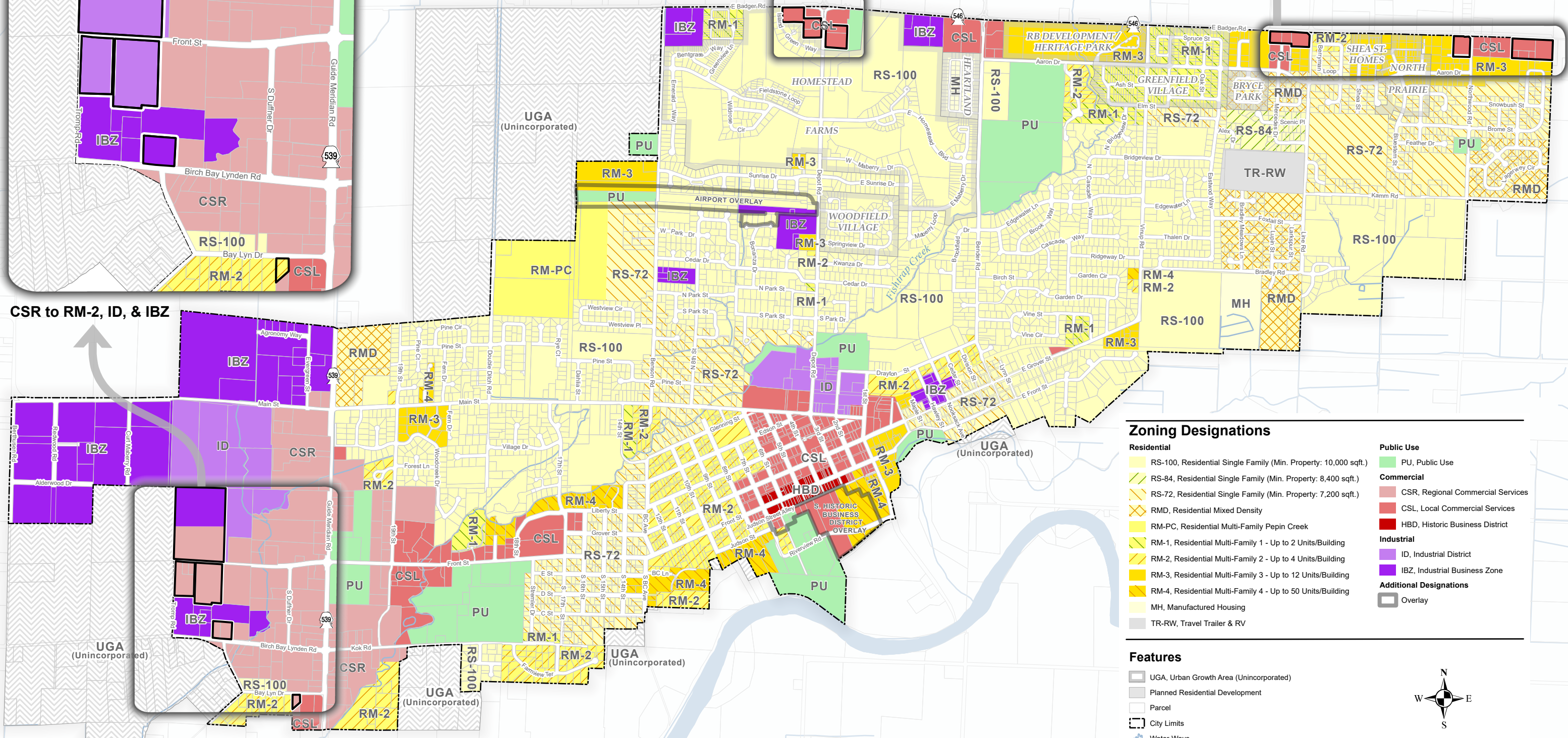
CSR to RM-2, ID, & IBZ



CSL to RM-4



CSL to RM-3

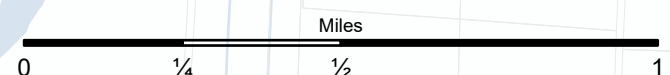


Zoning Designations

- | | |
|---|-----------------------------------|
| Residential | Public Use |
| RS-100, Residential Single Family (Min. Property: 10,000 sqft.) | PU, Public Use |
| RS-84, Residential Single Family (Min. Property: 8,400 sqft.) | Commercial |
| RS-72, Residential Single Family (Min. Property: 7,200 sqft.) | CSR, Regional Commercial Services |
| RMD, Residential Mixed Density | CSL, Local Commercial Services |
| RM-PC, Residential Multi-Family Pepin Creek | HBD, Historic Business District |
| RM-1, Residential Multi-Family 1 - Up to 2 Units/Building | Industrial |
| RM-2, Residential Multi-Family 2 - Up to 4 Units/Building | ID, Industrial District |
| RM-3, Residential Multi-Family 3 - Up to 12 Units/Building | IBZ, Industrial Business Zone |
| RM-4, Residential Multi-Family 4 - Up to 50 Units/Building | Additional Designations |
| MH, Manufactured Housing | Overlay |
| TR-RW, Travel Trailer & RV | |

Features

- UGA, Urban Growth Area (Unincorporated)
- Planned Residential Development
- Parcel
- City Limits
- Water Ways



Date: Tuesday, July 19, 2022

The City of Lynden has compiled this information for its own use and is not responsible for any use of this information by others and disclaims any warranty of merchantability or warranty of fitness for any particular purpose, either express or implied. The information found herein is provided simply as a courtesy to the public and is not intended for any third party use in any official, professional or other authoritative capacity. Persons using this information do so at their own risk and by such use agree to defend, indemnify and hold harmless the City of Lynden as to any claims, damages, liability, losses or suits arising out of such use. Contact the Whatcom County Assessor's Office (360-676-6790) for the most up to date parcel information.