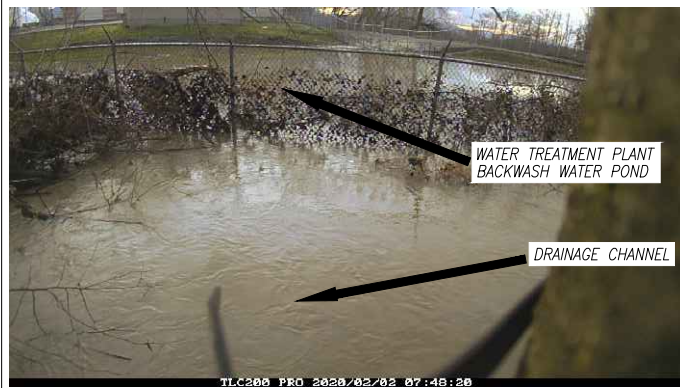


1

POND OVERTOPPING AND SUBSEQUENT BANK EROSION COMPROMISES INTEGRITY OF POND



POND OVERTOPPING DURING FLOOD - FEB 2020



BANK EROSION AFTER FLOOD - FEB 2020

2

CULVERT PERIODICALLY PLUGGED BY SEDIMENT AND DEBRIS



CULVERT PARTIALLY PLUGGED WITH SEDIMENT - APRIL 2019



CULVERT PARTIALLY PLUGGED WITH SEDIMENT - JAN 2020

SYMBOL LEGEND		LINE LEGEND	
	PHOTO LOCATION AND PERSPECTIVE		CENTERLINE OF RIGHT OF WAY
	SPOT ELEVATION		APPROXIMATE PROPERTY LINE
	LIGHT POST/BOLLARD		STORM DRAIN LINE
	DECIDUOUS TREE		GROUND GRADE BREAK LINE
	DECIDUOUS TREES GROUP		BRIDGE STRUCTURE EDGE LINE
	STORM DRAIN MANHOLE		FENCE LINE
	FRISBEE GOLF GOAL		QUARRY SPILL ROCK EDGE LINE
	WETLAND FLAG DELINEATED BY WCPW		FARM CROP/PASTURE EDGE LINE
			LAWN EDGE LINE
			PAVEMENT CROWN LINE
			EDGE OF ASPHALT PAVEMENT LINE
			EDGE OF GRAVEL LINE
			SANITARY SEWER LINE
			UTILITY STRUCTURE EDGE LINE
			WATER MAIN LINE
			WETLAND LINE

3

LEVEE BACKSLOPE PERIODICALLY DAMAGED BY OVERTOPPING DURING FLOODS



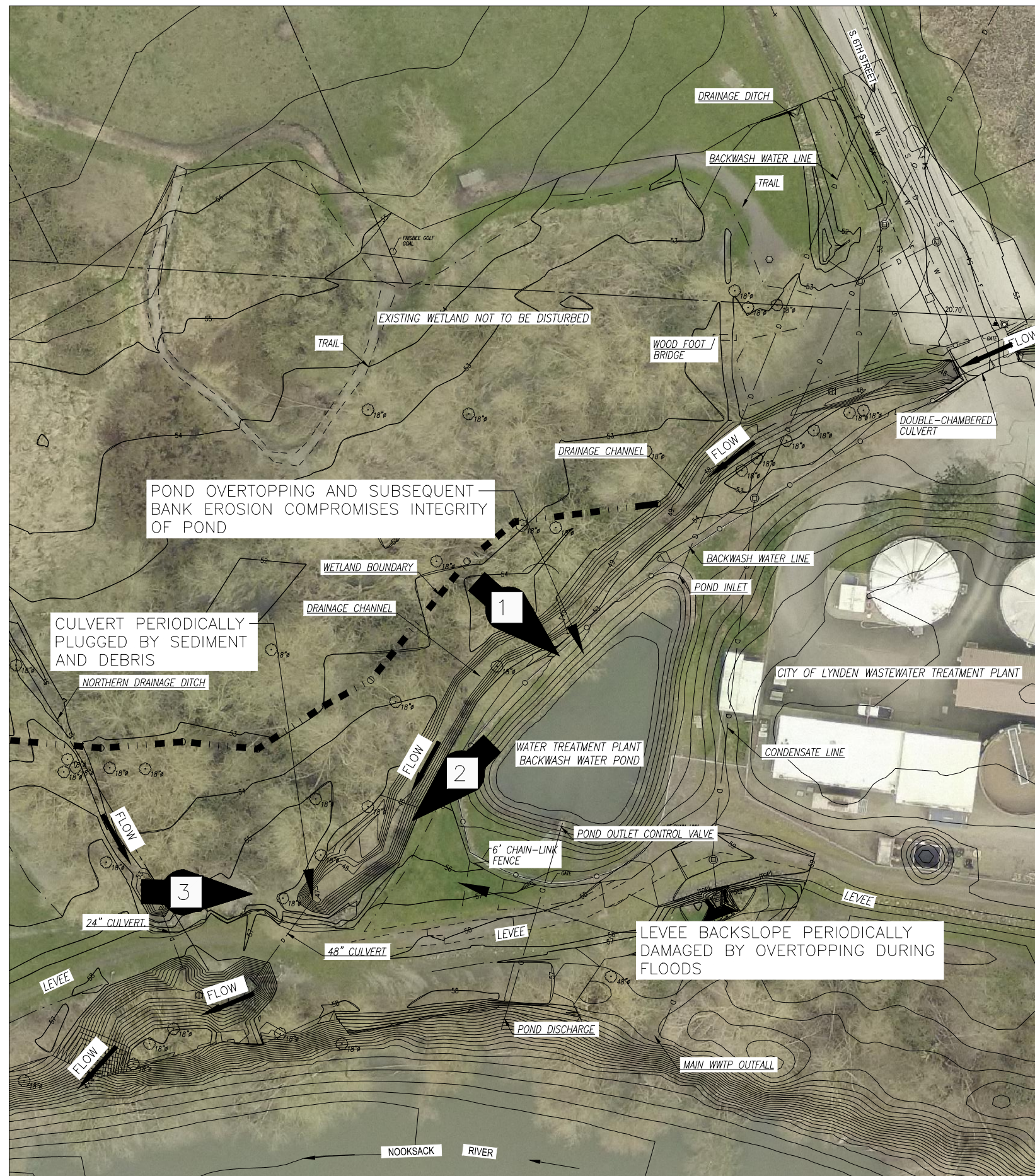
SCoured LEVEE BACKSLOPE BEFORE FLOOD - FEB 2020



LEVEE OVERTOPPING DURING FLOOD - FEB 2020



SCoured LEVEE BACKSLOPE AFTER FLOOD - FEB 2020



No.	SHEET REVISION	DATE	BY	PLAN SET ISSUE	DATE
1	60% DESIGN	JULY 15 2020	JAB		
2	LYNDEN CITY COUNCIL EXHIBIT 1	SEP 2 2020	JAB		
3					
4					

DESIGN	DRAWN	CHECK
N/A	JJA	PRINCE
DRAWING SCALE: AS SHOWN		
HORZ. DATUM: NAD 83/91 (LYN. CONTROL)		
VERT. DATUM: NAVD 88 (WSDOT)		

CONTRACT DATE:	AUGUST 2020
PROJECT No:	718005
ROAD/BIDGE No:	N/A
DRAWING FILE:	FC1805_X_EX.dwg

PUBLIC WORKS DIRECTOR:	JON HUTCHINGS
COUNTY ENGINEER:	JIM KARCHER, P.E.
PROJECT ENGINEER:	PAULA HARRIS, P.E.

WHATCOM COUNTY
 DEPARTMENT OF PUBLIC WORKS
 322 N. COMMERCIAL ST., SUITE 301 BELLINGHAM, WA 98225
 (360) 778-6210

PROJECT:	LYNDEN LEVEE CHANNEL REALIGNMENT	SHEET:	1
TITLE:	EXISTING CONDITIONS EXHIBIT	OF:	2

