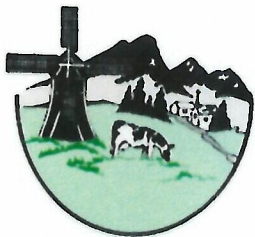




Monthly Report August 2020



Fire Prevention/Inspection:

All fire life safety inspection cancelled until further notice.

8/24 Oil tank removal inspection

Public Education/Community:

All station tours and public education activities cancelled until further notice

8/15 Recruit academy start

Emergency Operations:

Duty Officer

Hatley 8/4 – 8/10

Billmire 8/11 – 8/17

Billmire 8/26 – 9/4

Total Training Hours 304

Emergency Responses:

EMS	104 (31 transports)
MVA	8
Illegal burn	3
Structure fire	2
Grass fire	2
Vehicle fire	1
Fire other	1
Smoke scare	1
False Alarms	6
CO	1
Hazardous condition	1
Cancelled	11
Service call	1
Total	142

EMS = 104 (73%) (2 possible COVID-19)

Aid Given = 22

Aid Received = 4 (2 for no LFD unit available)

Overlapping calls = 13 (9%)

Average Turnout Time = 1:40

Average Response Time = 4:31

Average Time on Scene = 17:44

Average Transport Time = 28:40

Average at Hospital Time = 12:10

Overtime Hours: 333

Volunteer Hours: 231



Truck fire



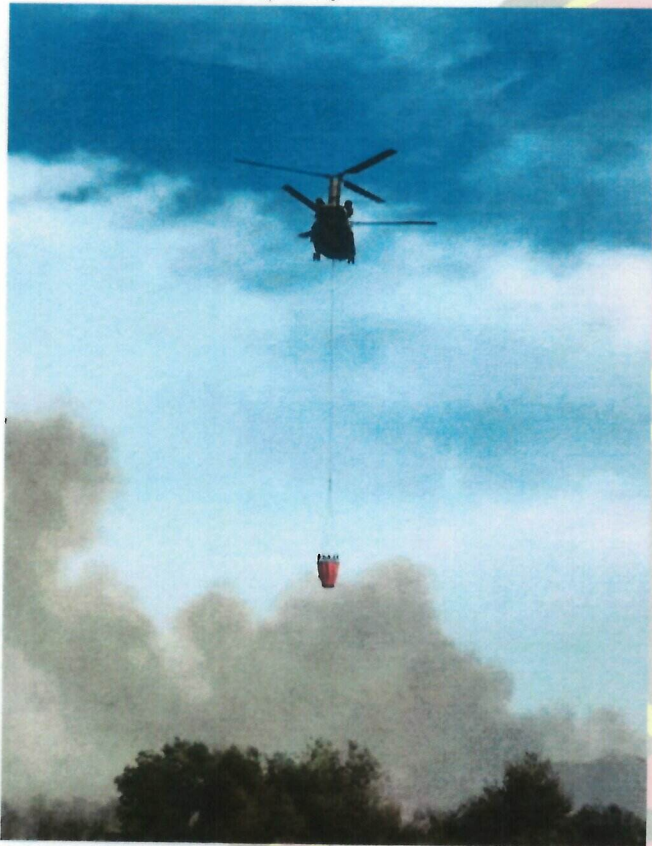
STICO class at the Annex



AC Hatley Taylor Pond Fire



Hose testing



Water drop Taylor Pond Fire



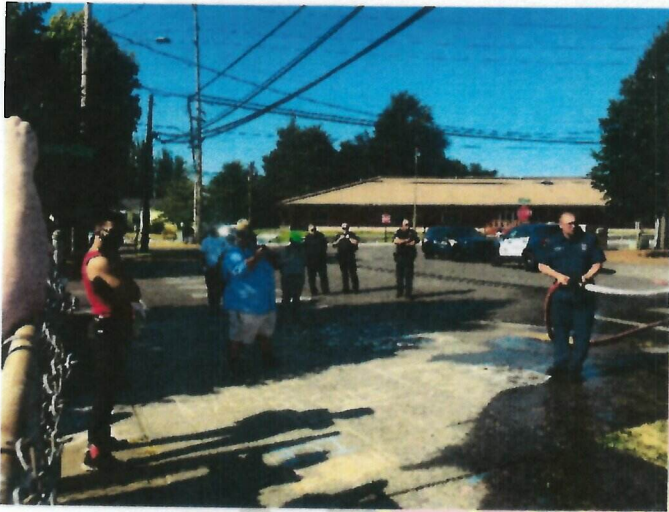
Barn fire Noon Rd.



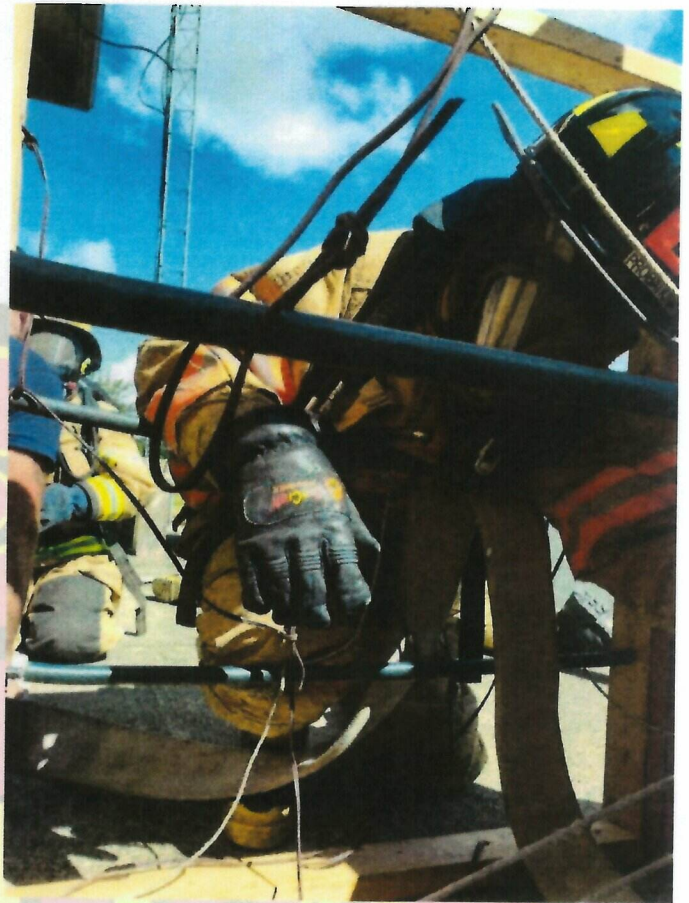
Ladder testing



Barn fire Noon Rd.



Glenning Park march



Entanglement prop



New recruit academy Dist-1



Chaplain Rosado helping out with the fires in California



New recruit academy Dist-1



Incident Hour Range Of Day 24	Number of Runs	Percent of Total Runs
00:00:00 - 00:59:59	3	2.78%
01:00:00 - 01:59:59	2	1.85%
02:00:00 - 02:59:59	1	0.93%
03:00:00 - 03:59:59	1	0.93%
05:00:00 - 05:59:59	3	2.78%
06:00:00 - 06:59:59	3	2.78%
07:00:00 - 07:59:59	2	1.85%
08:00:00 - 08:59:59	6	5.56%
09:00:00 - 09:59:59	4	3.70%
10:00:00 - 10:59:59	5	4.63%
11:00:00 - 11:59:59	7	6.48%
12:00:00 - 12:59:59	9	8.33%
13:00:00 - 13:59:59	5	4.63%
14:00:00 - 14:59:59	8	7.41%
15:00:00 - 15:59:59	9	8.33%
16:00:00 - 16:59:59	4	3.70%
17:00:00 - 17:59:59	9	8.33%
18:00:00 - 18:59:59	7	6.48%
19:00:00 - 19:59:59	3	2.78%
20:00:00 - 20:59:59	7	6.48%
21:00:00 - 21:59:59	5	4.63%
22:00:00 - 22:59:59	2	1.85%
23:00:00 - 23:59:59	3	2.78%
Total: 108	Total: 100.00%	

Incident Day Name	Number of Runs	Percent of Total Runs
Sunday	19	17.59%
Monday	18	16.67%
Tuesday	14	12.96%
Wednesday	9	8.33%
Thursday	18	16.67%
Friday	14	12.96%
Saturday	16	14.81%
Total: 108	Total: 100.00%	



Incident Complaint Reported By Dispatch (eDispatch.01)	Number of Runs	Percent of Total Runs
Falls	25	23.15%
Sick Person	24	22.22%
Traffic/Transportation Incident	10	9.26%
Breathing Problem	5	4.63%
Stroke/CVA	5	4.63%
Allergic Reaction/Stings	4	3.70%
Chest Pain (Non-Traumatic)	4	3.70%
Unknown Problem/Person Down	4	3.70%
Cardiac Arrest/Death	3	2.78%
Fire/Non-EMS	3	2.78%
Heart Problems/AICD	3	2.78%
Overdose/Poisoning/Ingestion	3	2.78%
Transfer/Interfacility/Palliative Care	3	2.78%
Traumatic Injury	3	2.78%
Unconscious/Fainting/Near-Fainting	3	2.78%
Abdominal Pain/Problems	2	1.85%
Psychiatric Problem/Abnormal Behavior/Suicide Attempt	2	1.85%
Convulsions/Seizure	1	0.93%
Diabetic Problem	1	0.93%
	Total: 108	Total: 100.00%

Patient Age Range In Years	Number of Runs	Percent of Total Runs
	2	1.85%
< 1	1	0.93%
10 - 19	4	3.70%
20 - 29	9	8.33%
30 - 39	9	8.33%
40 - 49	4	3.70%
50 - 59	10	9.26%
60 - 69	12	11.11%
70 - 79	22	20.37%
80 - 89	24	22.22%
90 - 99	11	10.19%
	Total: 108	Total: 100.00%