

Health and Community Services Update to Lynden City Council

Erika Lautenbach, Director

March 18, 2024



WHATCOM COUNTY
**HEALTH AND
COMMUNITY
SERVICES**



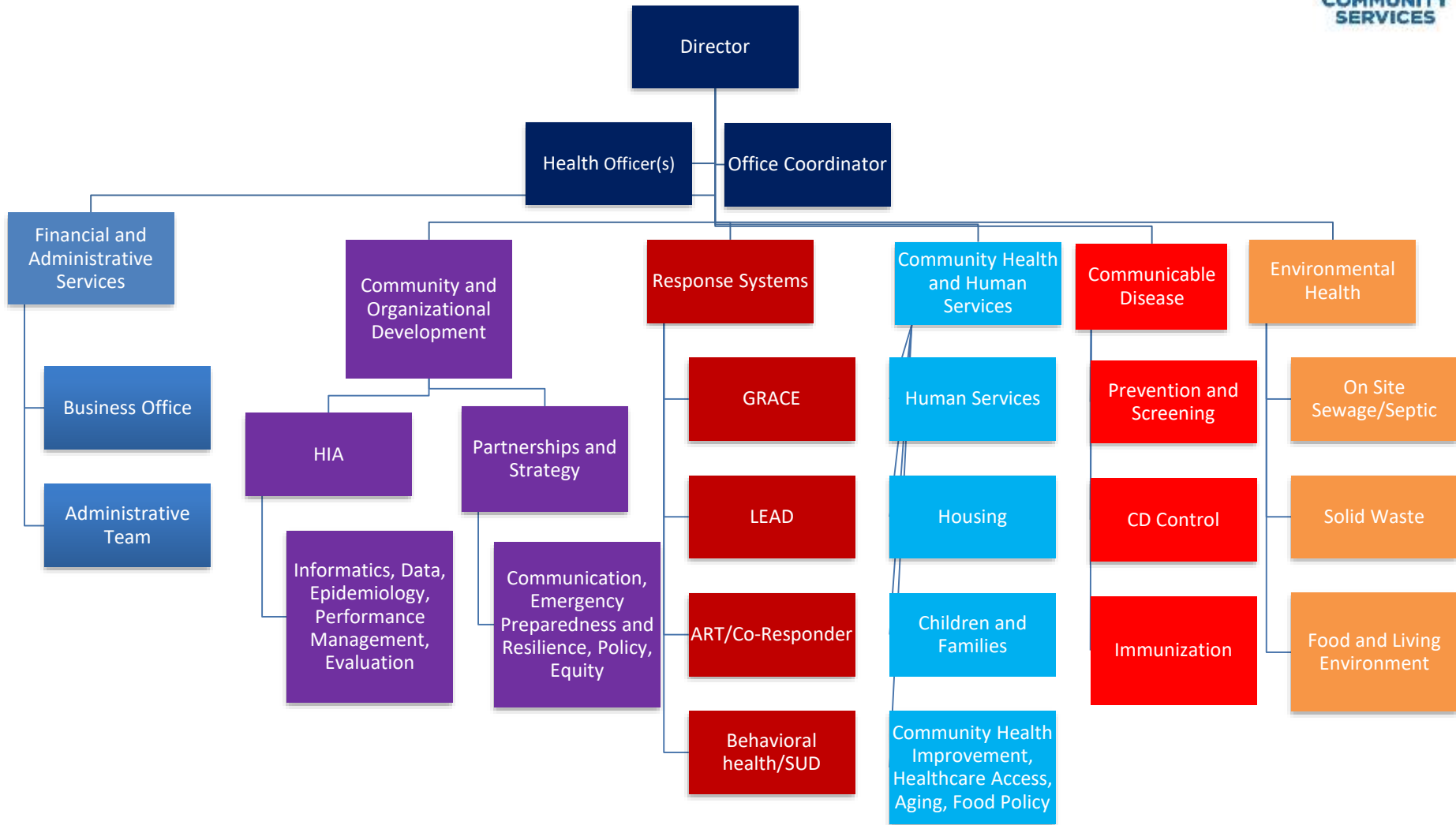
Department Overview



- Community and Organizational Development
- Community Health and Human Services
- Communicable Disease
- Environmental Health
- Financial Services
- Response Systems

- Leadership and Administration

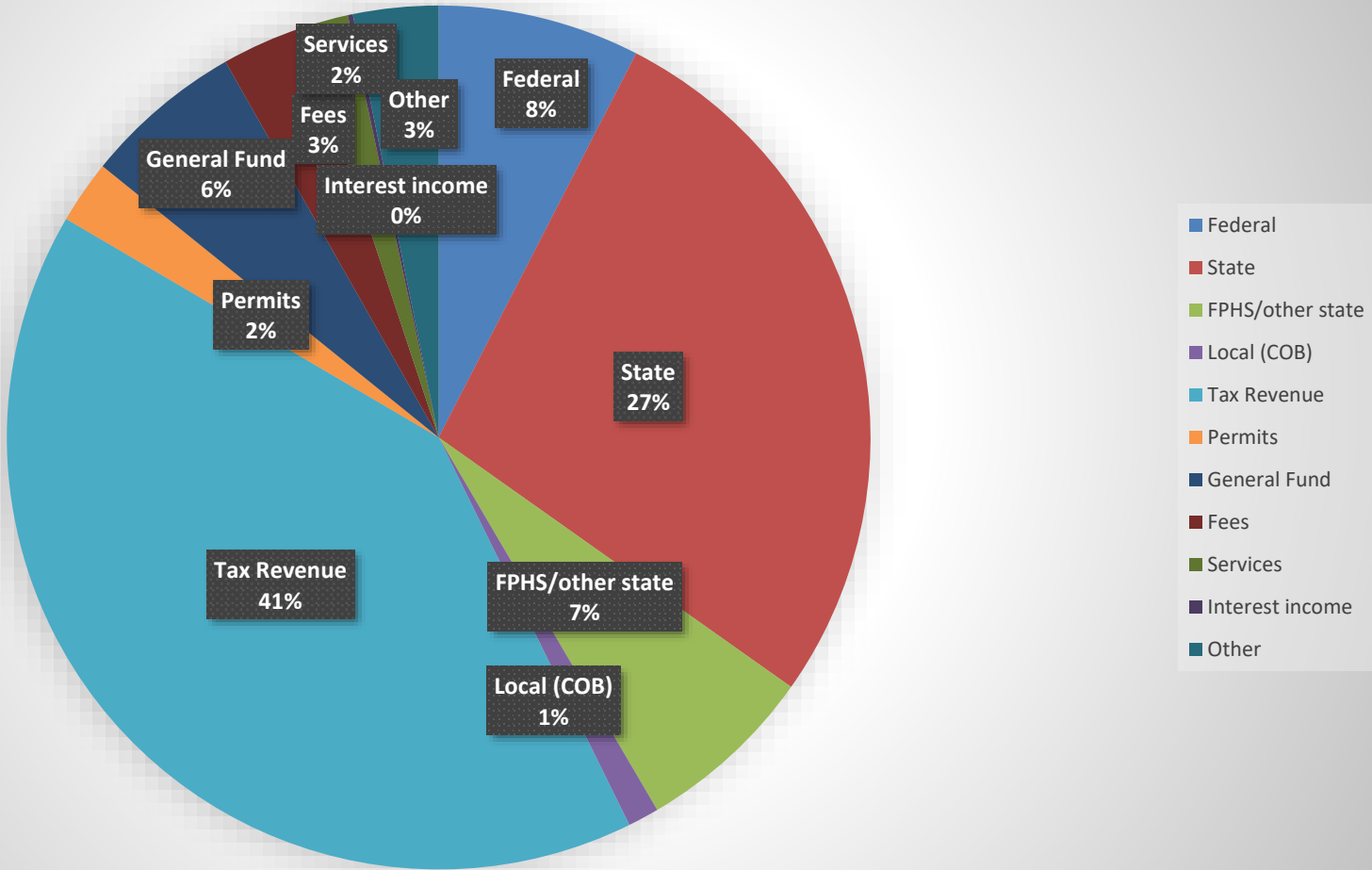
Department Overview



Budget

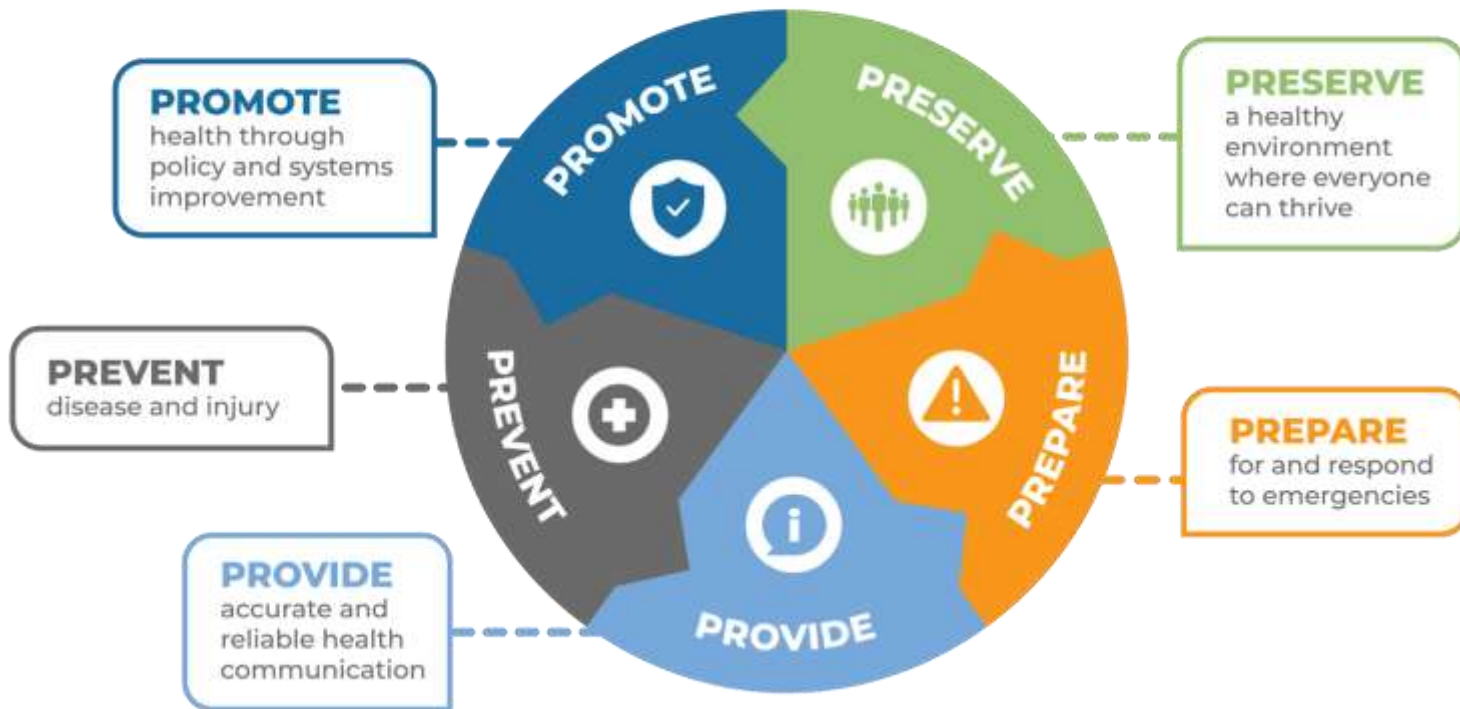


2024 HCS Revenue



Strategic Plan

OUR PURPOSE: We serve Whatcom County by
ADVANCING EQUITY & **PARTNERING WITH OUR COMMUNITY** to:



Strategic Plan



OUR STRATEGIC PRIORITIES:

These four strategic priorities will strengthen Whatcom County Health Department's capacity to fulfill its purpose and positively impact Whatcom County's community health programs, services and systems.

Community Partnerships & Engagement

Partner collaboratively to find community-based solutions that advance health and health equity.

Organizational Infrastructure

Effectively manage finances, resources, and staffing to support a culture of ethical practice, decision-making and governance.

Workforce Development

Build and support a diverse, skilled health and human services workforce while ensuring an organizational culture and work environment that is supportive of staff.

Quality Management

Use program data to drive decision-making, inform ongoing improvements and foster a culture of transparency and accountability.

2023 - Highlights



- Alternative Response Team
- Co-Responder Program
- Street Medicine Program
- Behavioral Health Fund Investment in Schools
- ARPA Childcare investments
- Healthy Children's Fund implementation plan and selection of priority projects
- Overdose prevention website with data updated monthly
- Fentanyl Multi-Agency Coordination group

What's Ahead in 2024



Whatcom Community Health Insights

A public health data center for Whatcom County

Trend

Race & Sex

Age

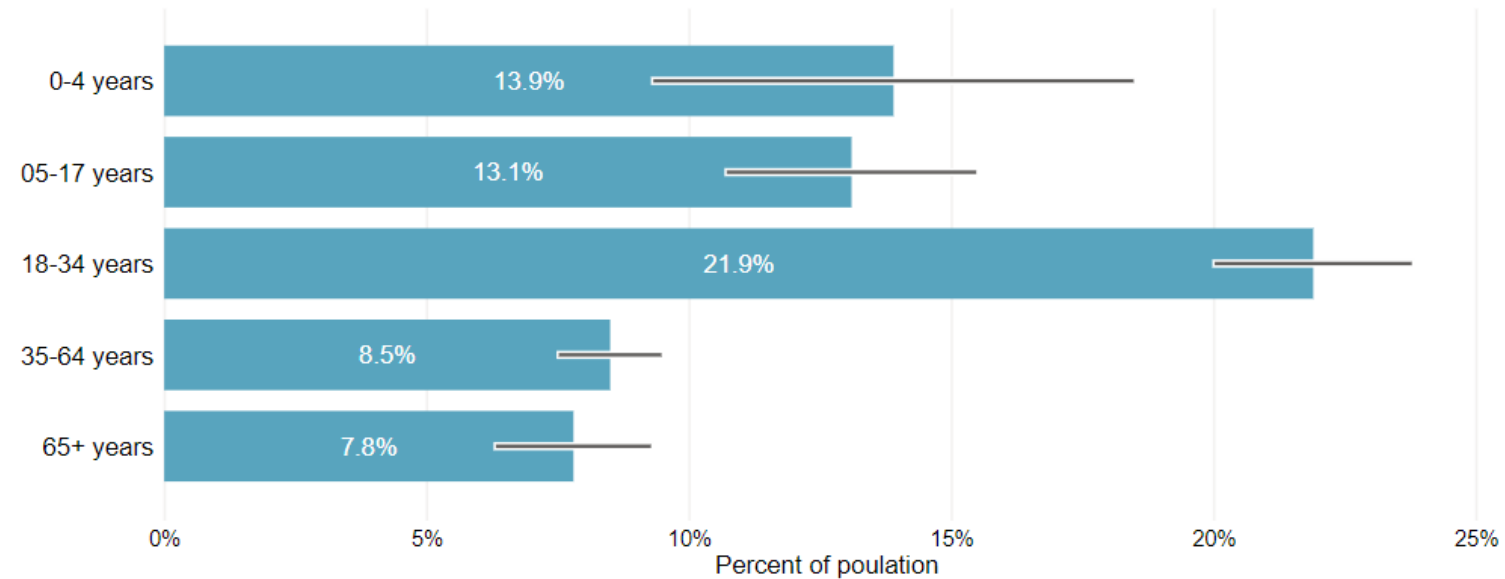
Age Trend

Data Notes

Population living in poverty in Whatcom County (2018-2022)

Percent of the population living below 100% of the federal poverty level

Age Group



Confidence Intervals

- + 78%

What's Ahead in 2024



**Whatcom Healthy
Children's Fund**

What's Ahead in 2024



What's Ahead in 2024

Whatcom Overdose Prevention



What's Ahead in 2024



CLIMATE VULNERABILITY ASSESSMENT

Identifying resilience strategies for the Comprehensive Plan



What's Ahead in 2024



WHATCOM COUNTY JUSTICE PROJECT NEEDS ASSESSMENT

Stakeholder Advisory Committee
for the Public Health, Safety,
and Justice Facility Needs Assessment

January 2023

Questions?



Erika Lautenbach, MPH
elautenb@co.Whatcom.wa.us