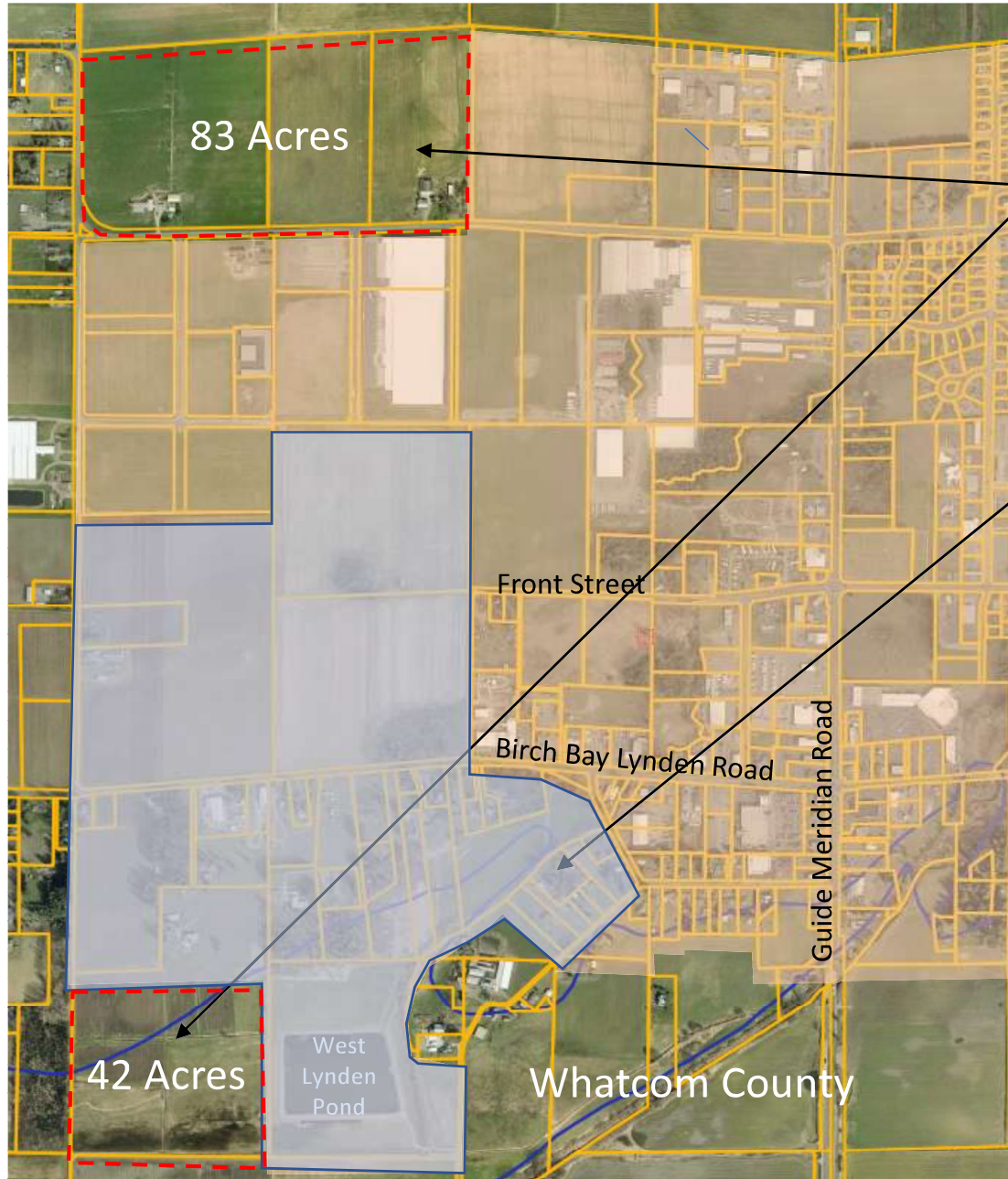


West Lynden Annexation and Potential Future UGA Expansion



Potential UGA Additions to be considered during Whatcom County Comp Plan Update

- 125 acres
- Land Use / Zoning Designations?

West Lynden UGA

- 285 acres
- Industrial, Commercial, and Residential Land Uses

Flood Plain Note:
 RCW 36.70A.111(8)(b) permits cities to expand into the one hundred year floodplain if rights to the development of the land have been permanently extinguished.

Uses of the land is then limited. Permitted uses include stormwater facilities, underground conveyances, flood control facilities, outdoor recreation, habitat enhancement or other environmentally beneficial projects.

Future Land Use Designations

City of Lynden 2016 Comp Plan

Designations

Current Zoning	Future Land Use
Residential, Low Density	RL, Low Density Residential
Residential, Medium Density	RM, Medium Density Residential
Public	PV, Public
Commercial	COM, Commercial
Industrial	IMD, Industrial

