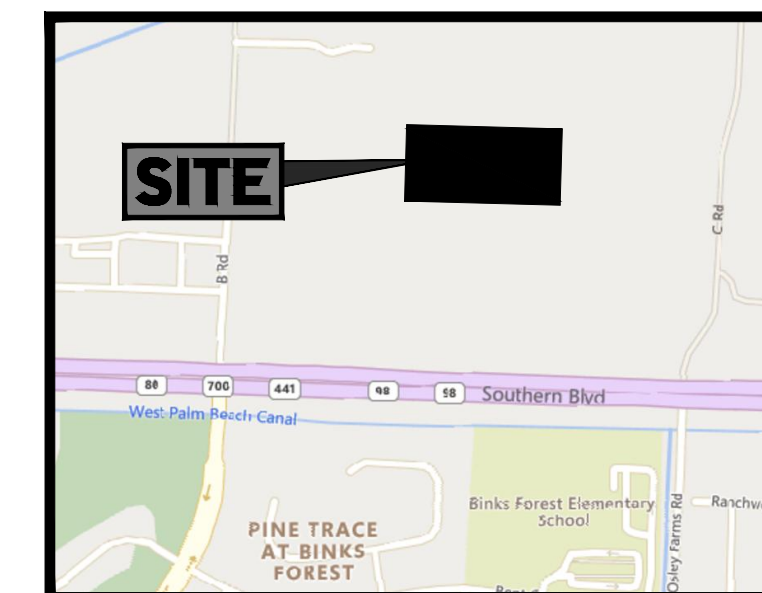
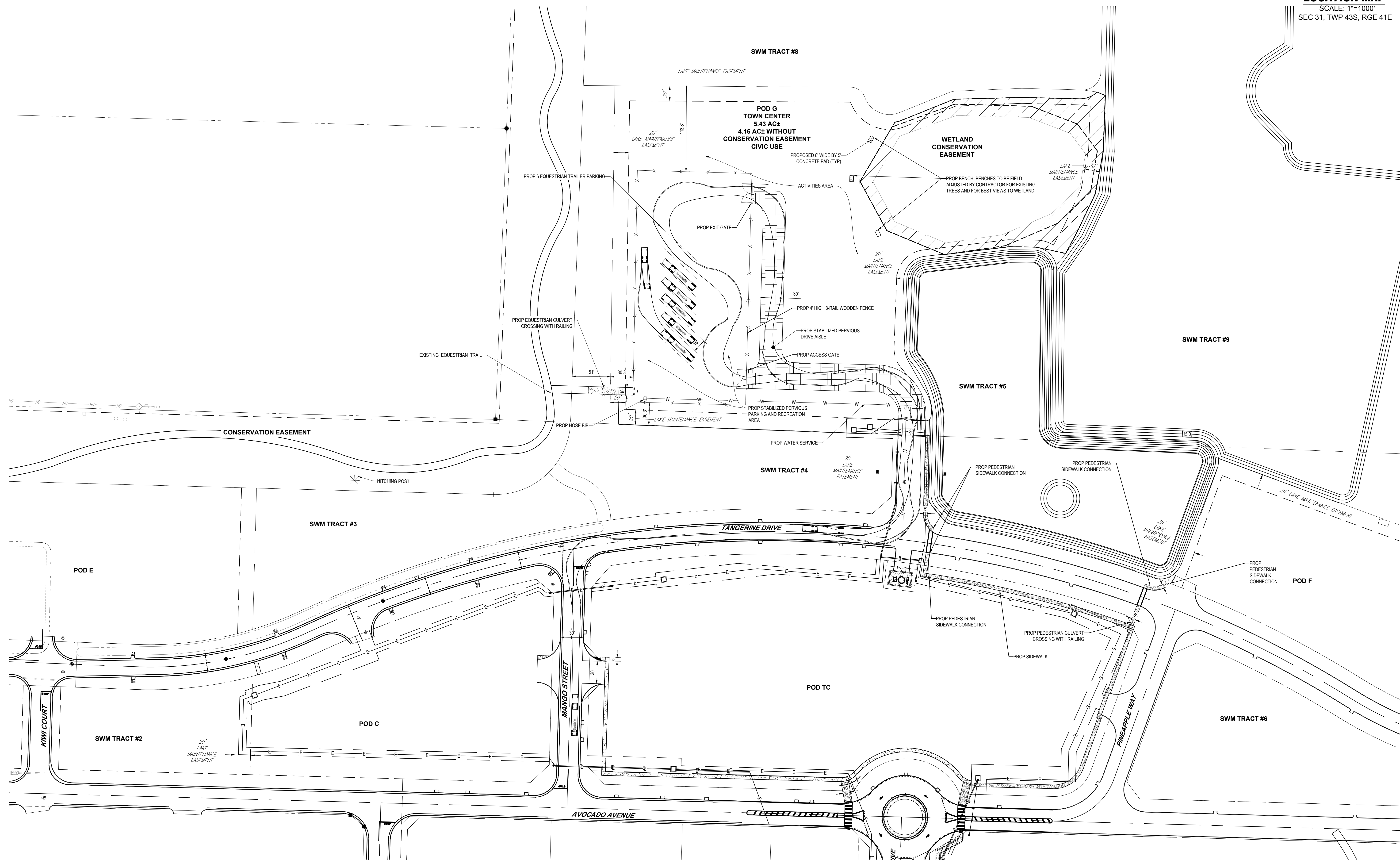


SITE DATA TABLE	
TOTAL AREA (EXCLUDING CONSERVATION EASEMENT)	4.16 AC
IMPERVIOUS AREA	0 AC
PERVIOUS AREA	4.16 AC



LOCATION MAP
SCALE: 1"=1000'
SEC 31, TWP 43S, RGE 41E



BOHLER //

SITE CIVIL AND CONSULTING ENGINEERING
PROGRAM MANAGEMENT
LANDSCAPE ARCHITECTURE
SUSTAINABLE DESIGN
PERMITTING SERVICES
TRANSPORTATION SERVICES

REVISIONS

REV	DATE	COMMENT	DRAWN BY

Sunshine 811

ALWAYS CALL 811
It's fast. It's free. It's the law.

SITE PLAN APPROVAL

THIS DRAWING IS INTENDED FOR MUNICIPAL AND/OR AGENCY REVIEW AND APPROVAL. IT IS NOT INTENDED AS A CONSTRUCTION DOCUMENT UNLESS INDICATED OTHERWISE.

PROJECT No.: FLC220010
DRAWN BY: TB
CHECKED BY: SWM
DATE: 01/07/24
CAD ID: FLC220010.00-SITE-TC-0

TOWN COMMONS SITE PLAN

FOR

SOLAR SPORTSYSTEM, INC.

LOCATION OF SITE:
N.E. CORNER OF SOUTHERN BLVD. AND B ROAD
TOWN OF LOXAHATCHEE GROVES
PALM BEACH COUNTY, FL
SEC 31, TWP 43S, RGE 41E

BOHLER //

1 SE 3RD AVE.
SUITE 2700
MIAMI, FLORIDA 33131
Phone: (786) 681-0800

FLORIDA BUSINESS CERT. OF AUTH. No. 30780

SHEET TITLE:
POD G TOWN COMMONS SITE PLAN

SHEET NUMBER:
EX-2

ORG. DATE - 08/06/2024

H:\2024\220010\00\DRAWINGS\SUBMIT\POD G\TOWN COMMONS SITE PLAN - AVOCADO, POD G.TC